

Gîte - Self Catering Planície Dourada "Casa a Oliveira"



Gîte - Self Catering - House,
detached, 1 floor, separate entrance,
in(on) a(an) Private property

Setting : rural, suitable for a relaxing
break

Capacity : 4 person(s)
Bedroom(s) : 2



Theme breaks
Wine tasting
Hikes
Nature discovery
Learning about country cookery
Life on the farm

Ferreira do Alentejo - Beja District - Alentejo

Portugal

Advert No. 34674

www.ihacom.com



Internet
Holiday
Ads



Internet
Holiday
Ads



Gîte - Self Catering



Gîte - Self Catering - House, detached, 1 floor, separate entrance, in(on) a(an) Private property

- **Ideal for all age groups**
- **View** : panoramic, not overlooked, country side, swimming pool, forest, fantastic sunset
- **Setting** : rural, suitable for a relaxing break
- **Exposure** : South-west

Goodies

- **Swimming pool** :
Private swimming pool, rectangular (length 33', width 16'), illuminated, steps in, pool house
- **Parking** :
Parking uncovered : 2 off road
- **Advantages** :
2 bike(s)
- **baby equipment** :
High chair



terrace

Surroundings & location



Countryside

Leisure

- **Leisure activities less than 12 miles** :
Bathing, tennis, pathway/broadwalk, fishing
- **Attractions and relaxation** :
Bar/pub, discotheque, restaurant, movie theater, karaoke, park and garden, zoo/ animal park, historical site, museum, festivals, local craftstore, cellar and wine tasting

Surroundings

- **Locality** :
 - Sea/ocean >31mi.
 - Sandy beach >31mi.
 - Rocky beach >31mi.
 - Nudist beach >31mi.
 - Public swimming pool 9mi.
 - Public tennis court 9mi.
 - Windsurfing spots >31mi.
 - Surfing spots >31mi.
 - Lake 9mi.
 - Forest 25mi.
- **Amenities** :
 - Village center 1.25mi.
 - Downtown 9mi.
 - Bus stop / bus station 1.25mi.
 - Breadstore 0.93mi.
 - Local stores 0.93mi.
 - Supermarket 9mi.
 - High class retailers 15.5mi.
 - Hairdressing salon 9mi.
 - Internet cafe 9mi.
 - Mail office 9mi.
 - Bank 6mi.
 - ATM 6mi.
 - Drugstore 9mi.
 - Doctor 9mi.
 - Hospital 15.5mi.
 - Dispensary 0.93mi.



terrace



panorama



living room

Interior

- **Receive up to guest(s) :**
4 person(s) - 4 adults
- **Liveable floor area :**
860 Sq.ft.
- **Interior layout :**
2 bedroom(s), 2 shower room, 2 washroom, living room 380 Sq.ft., american style kitchen
- **Sleeps - bed(s) :**
4 twin bed(s), 1 baby cradle
- **Guest facilities :**
T.V., board games, book collection, cable/satelite, internet access, cupboard, hair dryer, fly screens, electric heating, wood-burning stove, Drapes, Double glazed
- **Appliances :**
Crockery/flatware, kitchen utensils, electric coffee maker, electric hobs, oven, micro-wave oven, extractor hood, refridgerator, vacuum cleaner

Exterior

- **Size of grounds :**
7.5 acres
- **Outside accommodation :**
Terrace 530 Sq.ft., pergola 270 Sq.ft., gazebo
- **Outside setting :**
Enclosed grounds 7.5 acres, olive grove 7.5 acres
- **Outside amenities :**
Summer kitchen, BBQ, yard table(s), 4 yard seat(s), trolley on wheels, 2 chaise(s) longue (s), 4 sun recliner(s), climbing frame



kitchenette

Services

- **washing :**
Towels (2 X / per week), Linen (2 X / per week), Beach towels (1 X / per week), Comforter(s), Pillows
- **Single family home :**
Cleaning on departure, Yard/swimming pool maintenance (3 X / per week), Parking, Airport transfers supplement (+\$109 *)
- **Restauration :**
Breakfast supplement (+\$8 *), Guest table supplement (3 X / per week +\$27 *), Picnic basket supplement (+\$20 *)

For your guidance

- **For your guidance**
Kids welcome
Pets accepted under certain conditions (ask the owner)
Present on site : pets
Non smoking rental, cell phone network coverage, personal transport advisable
Water : hot/cold
Local voltage supply : 220-240V / 50Hz
Electricity supply : mains



living room

Floor plan

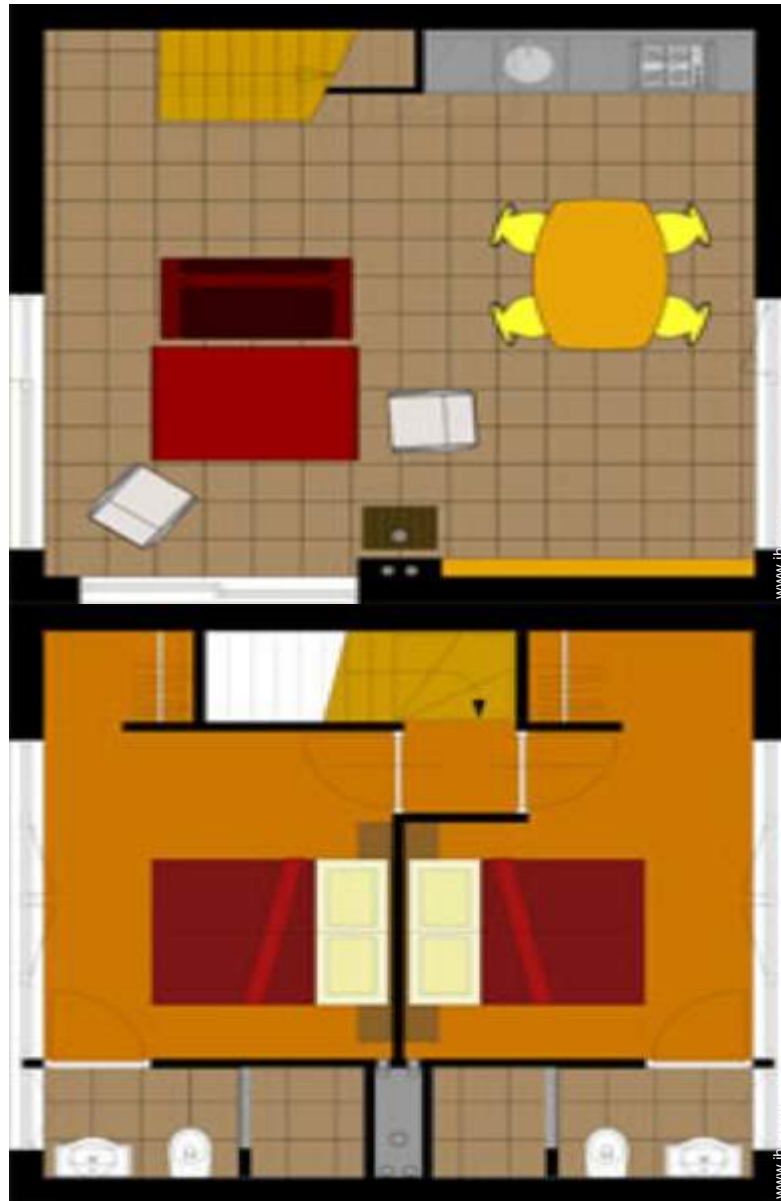


Photo album - 1



panorama



terrace



terrace



living room



living room

Advert No. 34674

www.iha.com



Internet
Holiday
Ads



Internet
Holiday
Ads



DIRECT BY OWNERS

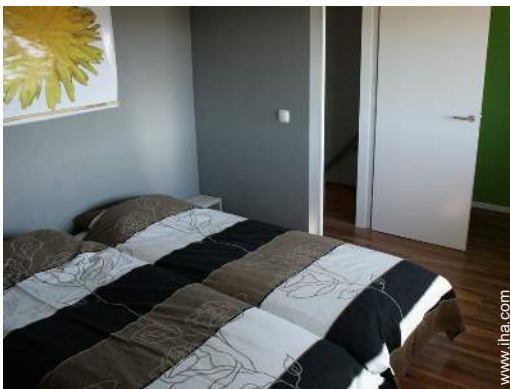
Photo album - 2



kitchenette



bedroom



Sleeps - bed(s)



shower room



terrace



terrace



terrace



panorama

Photo album - 3



panorama



Exterior facilities at guests disposal



pool view



view from the swimming pool



pool view



summer kitchen



Exterior facilities at guests disposal



panorama

Theme breaks

Wine tasting



Indicated duration : 2 hours
Participant(s) : 2 min
From \$14

Fall, On request (groups)

Hikes



Included in the price of the accommodation

All year

Nature discovery



Included in the price of the accommodation

Spring, On request (groups)

Learning about country cookery



Indicated duration : 2 hours
Participant(s) : 1 min - 10 max
Level : Initiation

From \$27 for 1 person(s)

All year, On request (groups)

Life on the farm



Indicated duration : 2 hours
Participant(s) : 5 min
Level : All year, On request (groups), **Accompanied**

From \$7 for 1 person(s)

Summer, Fall, spring, On request (groups)

[Favourite photo gallery - 1](#)



Oct 2011

Location & Access



GPS coordinates in degrees, minutes, seconds: Latitude 38° 0'20"N - Longitude 8° 12'55"W ([Dwelling](#))

Address

→ Aldeia de Rouquenho
7900 Ferreira do Alentejo

• Airport Lisbon Portela

→ Lisbon, Lisbon District, Lisbon and Tagus Valley, Portugal
→ Distance : 92mi.
→ Time : 1h30'

• Airport Faro

→ Faro, Algarve, Portugal
→ Distance : 92mi.
→ Time : 1h30'

• Freeway (exit) Ferreira do Alentejo / Beja

→ Canhestros, Beja District, Alentejo, Portugal
→ Distance : 12.5mi.
→ Time : 15'

• Aljustrel : Distance : 15.5mi.

• Beja : Distance : 15.5mi.

• Vila Nova de Milfontes : Distance : 46,5mi.

Contact

Last Name	Miss NIJHUIS Margriet
Address	Caixa Postal 77
City	7900-112 ALDEIA DE ROUQUENHO
Country	Portugal
Cell phone #	+351 962014901 (Portugal)
Spoken languages	   



Gîte - Self Catering
Alentejo - Planície Dourada
"Casa a Oliveira"

11
[Book now](#)

Availability calendar - from : may 2012

May	Tu	W	Th	F	Sa	Su	M	Tu	W	Th	F	Sa	Su	M	Tu	W	Th	F	Sa	Su	M	Tu	W	Th	F	Sa	Su	M	Tu	W	Th
2012	1	2	3	4	5	6	7	8	9	10	11	12	13	14	15	16	17	18	19	20	21	22	23	24	25	26	27	28	29	30	31
															-	-	-	-	-	-	-	-	-	-	-	-	-	-	-	-	-

June	F	Sa	Su	M	Tu	W	Th	F	Sa	Su	M	Tu	W	Th	F	Sa	Su	M	Tu	W	Th	F	Sa							
2012	1	2	3	4	5	6	7	8	9	10	11	12	13	14	15	16	17	18	19	20	21	22	23	24	25	26	27	28	29	30
	-	-	-	-	-	-	-	-	-	-	-	-	-	-	-	-	-	-	-	-	-	-	-	-	-	-	-	-	-	-

Jul	Su	M	Tu	W	Th	F	Sa	Su	M	Tu	W	Th	F	Sa	Su	M	Tu	W	Th	F	Sa	Su	M	Tu							
2012	1	2	3	4	5	6	7	8	9	10	11	12	13	14	15	16	17	18	19	20	21	22	23	24	25	26	27	28	29	30	31
	-	-	-	-	-	-	-	-	-	-	-	-	-	-	-	-	-	-	-	-	-	-	-	-	-	-	-	-	-	-	

Mid season High season

[Month : Next >>](#)

Rental rates - Gîte - Self Catering - House - 4 Person(s)

Rates	Night	Weekend	week	2 weeks	Month
 Low season	\$82 * > 3	-	\$545 *	-	-
 Mid season	\$116 * > 3	-	\$770 *	-	-
 High season	\$136 * > 3	-	\$858 *	-	-

> Minimum Night

[Book now](#)





terrace



living room



living room



panorama



terrace

Booking conditions

- **Reservation**

→ Payment made at time of reservation :
40% of rental sum
→ Payment balance :
1 day before the stay

- **Rental**

→ Day tax included
→ Cleaning charge on departure included

Accepted methods of payment

• Bank transfer (wire) • Cash

[▶ Book now](#)

[▶ Contact the owner](#)

Contact directly the property owners

www.ihacom.com
Advert No.
34674
[>> Book now <<](#)

Contact

Last Name	Miss NIJHUIS Margriet
Address	Caixa Postal 77
City	7900-112 ALDEIA DE ROUQUENHO
Country	Portugal
Cell phone #	+351 962014901 (Portugal)

Spoken languages



* Converted at the rate indicated : €100 = \$136.26 = £86.8

Advert No. 34674

www.ihacom.com



>> VACATION RENTALS

Internet
Holiday
Ads



Internet
Holiday
Ads



DIRECT BY OWNERS