

Vacation rental Albufeira "Nautilus"



Penthouse 5nd floor in(on) a(an)
Mansion Town House 4 floors

Setting : exclusive, luxurious

Capacity : 6 person(s)

Bedroom(s) : 2

Albufeira - Algarve

Portugal

Advert No. 51729

www.iha.com



Internet
Holiday
Ads



Internet
Holiday
Ads



Vacation rental



Penthouse 5nd floor in(on) a(an) Mansion
Town House 4 floors

- **Ideal for large families, family**
- **View :** panoramic, sea/ocean, rooftop, fantastic sunset, nightlights
- **Setting :** exclusive, luxurious
- **Exposure :** South

Goodies

- **Swimming pool :**
Shared swimming pool, rectangular (length 30', width 15'), steps in (open from 'may 01' till 'october 01')
- **Parking :**
Covered parking : 1 individual stall locked, 1 carport
- **baby equipment :**
High chair, infant tub, baby potty, playpen

Benefits :
Direct access to the beach

Surroundings & location



Leisure

- **Leisure activities less than 12 miles :**
Bathing, pedalo, scuba diving, banana boat, water skiing, jet ski, surfing, windsurfing, sailing, golf, tennis, riding school, pathway/broadwalk, coastal/forest paths, mountain bike (path), parascending, boat trips, horse trekking, skate board (ramps), ten-pin bowling, deep-sea fishing, fishing
- **Supervised :**
Sailing school, tennis school, riding school
- **Attractions and relaxation :**
Bar/pub, discotheque, restaurant, movie theater, park and garden, zoo/animal park, sea world, nature reserve, exhibition center, art gallery, historical site, museum, antiques & bric-a-brac, local craftstore, cellar and wine tasting, casino, sauna, health spa, fitness center

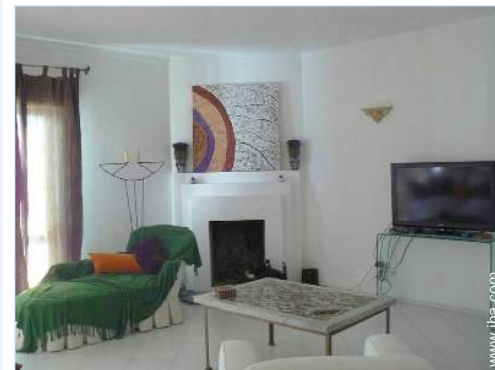
Surroundings

- **Locality :**
 - Sea/ocean 660'
 - Sandy beach 330'
 - Nudist beach 1.5mi.
 - Sea inlet 0.3mi.
 - 9 hole golf course 1.25mi.
 - Windsurfing spots 660'
 - Surfing spots 660'
 - Watersports centre 0.3mi.
 - Cliff 4.5mi.
 - Marina 0.3mi.
 - Slipway 0.3mi.
 - Jetski slipway 0.3mi.
- **Amenities :**
 - Downtown 660'
 - Bus stop / bus station 165'
 - Bike/mountain bike hire
 - Scooter/motorbike hire
 - Car rental <165'
 - Boat rental 0.3mi.
 - Scuba diving material hire 0.3mi.
 - Household linens for hire/laundry services 165'
 - Breadstore <165'
 - Caterer <165'
 - Local stores <165'
 - Supermarket 165'
 - High class retailers 3mi.
 - Hairdressing salon <165'
 - Internet cafe <165'
 - Mail office 660'
 - Bank 660'
 - ATM 330'

- Drugstore 660'
- Doctor 660'
- Hospital 0.5mi.



sitting room



sitting room



living room



dining room

Interior

- **Receive up to guest(s) :**

6 person(s) - 4 adults, 2 kids

- **Liveable floor area :**

1,600 Sq.ft.

- **Interior layout :**

2 bedroom(s), 1 bathroom, 1 washroom, living room 270 Sq.ft., sitting room 323 Sq. ft., large separate kitchen, dining room, cosy nook, tv den, veranda

- **Sleeps - bed(s) :**

1 king-size bed(s), 1 sleeper sofa(s) 2 pers, 2 two twin beds, 1 baby cradle, 1 possible additional sleeping supplementary

- **Guest facilities :**

Fireplace, elevator, T.V., DVD player, movie collection, cable/satellite, wifi (wireless internet access), wardrobe, Hanging wardrobe, safe deposit box, hair dryer, heated towel rail, fully air-conditioned, Drapes, Blinds, Rolling shutters, fire alarm

- **Appliances :**

Crockery/flatware, kitchen utensils, cafetiere, electric kettle, toaster, juicer, electric hobs, oven, micro-wave oven, extractor hood, refrigerator, deep freeze, dish washer, washing machine, vacuum cleaner, iron, ironing board

Exterior

- **Outside accommodation :**

Terrace 150 Sq.ft., balcony 120 Sq.ft.

- **Outside amenities :**

Yard table(s), 6 yard seat(s), parasol, 3 chaise(s) longue(s)



master bedroom

Services

- **washing :**

Sheets (1 X / per week), Towels (2 X / per week), Linen, Beach towels supplement, Comforter(s), Pillows

- **Single family home :**

Serviced supplement (2 X / per week +\$41 *), Cleaning on departure supplement (+\$61 *), Yard/swimming pool maintenance, Parking

- **Personnel :**

Laundry supplement

For your guidance

- **For your guidance**

Kids welcome

Pets accepted under certain conditions (ask the owner)

Non smoking rental, cell phone network coverage

Water : hot/cold

Local voltage supply : 220V / 60Hz

Electricity supply : mains and back-up generator



master bedroom

Photo album - 1



view over the ocean



living room



sitting room



sitting room



dining room



master bedroom

Advert No. 51729

www.iha.com



Internet
Holiday
Ads



Internet
Holiday
Ads



Photo album - 2



master bedroom



bedroom



view from the house



bathroom



large seperate kitchen



large seperate kitchen



Kitchen Area



Equipment at the guest's disposal



washroom



veranda



rooftop view



view from the apartment

Photo album - 3



rooftop view



view from the bedroom



view from the kitchen



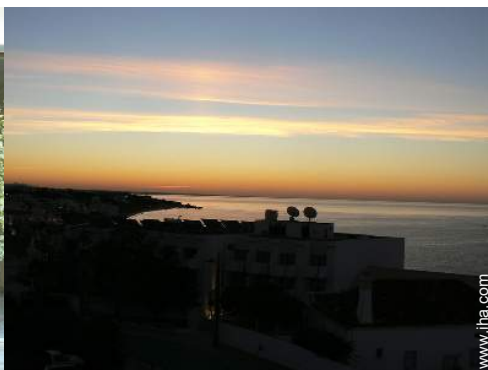
view from the veranda



Swimming pool



façade



view of the sunset



bathing



bathing



marina



panorama

Location & Access



GPS coordinates in degrees, minutes, seconds: Latitude 37° 5'15.072"N - Longitude 8°15'10.98"W (City)

Address

→ Rua Dr. Diogo Leote 7
8200 Albufeira

• Airport Faro

→ Faro, Algarve, Portugal
→ Distance : 22,5mi.
→ Time : 30'

• Bus station Albufeira

→ Albufeira, Algarve, Portugal
→ Distance : 0.3mi.
→ Time : 5'

• Railroad station Ferreiras Albufeira

→ Ferreiras, Algarve, Portugal
→ Distance : 2.5mi.
→ Time : 15'

• Paderne : Distance : 4.5mi.

• Vilamoura : Distance : 9mi.

• Faro : Distance : 22,5mi.

Contact

| | |
|--------------|---|
| Last Name | Miss BAILOTE Maria Paulo |
| Address | Rua Dr. Diogo Leote 7 |
| City | 8200-121 ALBUFEIRA |
| Country | Portugal |
| Phone # | +351 289040805 (Portugal) From 03:00 PM to 10:00 PM (GMT/UTC) |
| Cell phone # | +351 919145901 (Portugal) |
| Fax # | +351 289040805 (Portugal) |

Spoken languages



Availability calendar - from : may 2012

| May | Tu | W | Th | F | Sa | Su | M | Tu | W | Th | F | Sa | Su | M | Tu | W | Th | F | Sa | Su | M | Tu | W | Th | F | Sa | Su | M | Tu | W | Th | |
|------|----|---|----|---|----|----|---|----|---|----|----|----|----|----|----|----|----|----|----|----|----|----|----|----|----|----|----|----|----|----|----|--|
| 2012 | 1 | 2 | 3 | 4 | 5 | 6 | 7 | 8 | 9 | 10 | 11 | 12 | 13 | 14 | 15 | 16 | 17 | 18 | 19 | 20 | 21 | 22 | 23 | 24 | 25 | 26 | 27 | 28 | 29 | 30 | 31 | |
| | | | | | | | | | | | | | | | | | | | | | | | | | | | | | | | | |

| June | F | Sa | Su | M | Tu | W | Th | F | Sa | Su | M | Tu | W | Th | F | Sa | Su | M | Tu | W | Th | F | Sa | | | | | | | | |
|------|---|----|----|---|----|---|----|---|----|----|----|----|----|----|----|----|----|----|----|----|----|----|----|----|----|----|----|----|----|----|--|
| 2012 | 1 | 2 | 3 | 4 | 5 | 6 | 7 | 8 | 9 | 10 | 11 | 12 | 13 | 14 | 15 | 16 | 17 | 18 | 19 | 20 | 21 | 22 | 23 | 24 | 25 | 26 | 27 | 28 | 29 | 30 | |
| | | | | | | | | | | | | | | | | | | | | | | | | | | | | | | | |

| Jul | Su | M | Tu | W | Th | F | Sa | Su | M | Tu | W | Th | F | Sa | Su | M | Tu | W | Th | F | Sa | Su | M | Tu | | | | | | | |
|------|----|---|----|---|----|---|----|----|---|----|----|----|----|----|----|----|----|----|----|----|----|----|----|----|----|----|----|----|----|----|----|
| 2012 | 1 | 2 | 3 | 4 | 5 | 6 | 7 | 8 | 9 | 10 | 11 | 12 | 13 | 14 | 15 | 16 | 17 | 18 | 19 | 20 | 21 | 22 | 23 | 24 | 25 | 26 | 27 | 28 | 29 | 30 | 31 |
| | | | | | | | | | | | | | | | | | | | | | | | | | | | | | | | |

■ Low season
 ■ Mid season
 ■ Reserved
 ■ High season

[Month : Next >>](#)

Rental rates - Penthouse - 6 Person(s)

| Rates | Night | Weekend | week | 2 weeks | Month |
|--|----------------|---------|----------|----------|-------|
| ■ Low season | \$198 * > 7 | - | \$1383 * | \$2698 * | - |
| ■ Mid season | \$214 * > 7 | - | \$1497 * | \$2923 * | - |
| ■ High season | \$270 * > 7 | - | \$1889 * | \$3706 * | - |
| ■ Festive specials | \$245 * > 5 | - | \$1526 * | \$2984 * | - |
| ■ Promotional period | \$164 * > 5 | - | \$1145 * | \$2221 * | - |

> Minimum Night

[Book now](#)





sitting room



dining room



master bedroom



view over the ocean



living room



sitting room

Booking conditions

• Reservation

- Payment made at time of reservation : 20% of rental sum
- Payment balance : on return of keys
- Deposit required : \$341 *

• Rental

- Service charges included
- Day tax included
- Cleaning charge levy on departure : \$61 *
- Anticipated supplement for :
 - animals
 - firewood

Accepted methods of payment

- Bank transfer (wire) • PayPal • Cash

[▶ Book now](#)

[▶ Contact the owner](#)

Contact directly the property owners

www.ihacom.com
Advert No.
51729
[>> Book now <<](#)

Contact

Last Name Miss BAILOTE Maria Paulo
Address Rua Dr. Diogo Leote 7
City 8200-121 ALBUFEIRA
Country Portugal
Phone # +351 289040805 (Portugal) From 03:00 PM to 10:00 PM (GMT/UTC)
Cell phone # +351 919145901 (Portugal)
Fax # +351 289040805 (Portugal)

Spoken languages



* Converted at the rate indicated : €100 = \$136.26 = £86.8

Advert No. 51729

www.ihacom.com



Internet
Holiday
Ads



Internet
Holiday
Ads

