

# Charming vacation rental Alsace "Pavillon de la Bruche"



**Charming Bungalow**, detached, single storey, separate entrance, in (on) a(an) Charming Property

Setting : pleasant, serene

Capacity : 4 person(s)

Bedroom(s) : 2

Room(s) : 4



Meublés de Tourisme (4 stars)

Holtzheim - Lower Rhine (67) - Alsace

France

Reservation : +33 (0) 3 88 76 19 84 (France)



Advert No. 31977

www.ihh.com



>> VACATION RENTALS

Internet  
Holiday  
Ads



Internet  
Holiday  
Ads



DIRECT BY OWNERS

Charming vacation rental



Charming Bungalow, detached, single storey, separate entrance, in/on) a(an) Charming Property

- Ideal for all age groups, family
- View : not overlooked, country side, garden/park, river, village
- Setting : pleasant, serene
- Exposure : South-east

Goodies

- Parking :  
Parking uncovered : 2 internal, 2 reserved stall
- Advantages :  
Ski locker
- baby equipment :  
High chair

Benefits :  
Stable(s)

Surroundings & location



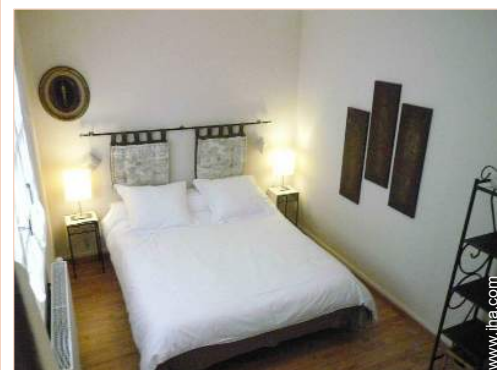
Leisure

- Leisure activities less than 12 miles :  
Ice-skating, bathing, pedalo, canoeing, golf, tennis, squash, riding school, pony club, pathway/broadwalk, hiking, mountain bike (path), parachuting, flying (club), glider (club), boat trips, horse trekking, rollerblade/rollerskate (circuit), ATV/Quad Bike, go-karting, ten-pin bowling, baseball, basketball, volleyball, fishing, fishing
- Supervised :  
Tennis school, riding school
- Attractions and relaxation :  
Bar/pub, discotheque, restaurant, movie theater, park and garden, leisure park, zoo/animal park, exhibition center, art gallery, historical site, museum, theater, summer theater, opera house, festivals, antiques & bric-a-brac, local craftstore, cellar and wine tasting, race track, thermal baths, sauna, steam baths, health spa, beauticians, fitness center

Surroundings

- Locality :  
- Ski slopes 31mi.  
- Ski lifts 31mi.  
- Ice skating rink 9mi.  
- Public swimming pool 3mi.  
- Public tennis court 1.25mi.  
- 18 hole golf course 6mi.  
- River <165'  
- Stretch of water 6mi.  
- Forest 15.5mi.  
- Mountain range 25mi.
- Amenities :  
- Village center 0.62mi.  
- Downtown 9mi.  
- Bus stop / bus station 660'  
- Streetcar system 3mi.  
- Bike/mountain bike hire 9mi.  
- Scooter/motorbike hire 9mi.  
- Car rental 2.5mi.  
- Boat rental 9mi.  
- Ski hire store 6mi.  
- Breadstore 0.3mi.  
- Caterer 0.62mi.  
- Local stores 0.3mi.  
- Supermarket 990'  
- High class retailers 9mi.  
- Hairdressing salon 990'  
- Internet cafe 9mi.  
- Mail office 0.3mi.  
- Bank 330'  
- ATM 330'  
- Drugstore 0.62mi.  
- Doctor 0.62mi.  
- Nurse 0.62mi.

- Hospital 4.5mi.



Advert No. 31977

[www.iha.com](http://www.iha.com)



Internet  
Holiday  
Ads



Internet  
Holiday  
Ads





### Interior

- **Receive up to guest(s) :**

4 person(s) - 4 adults

- **Liveable floor area :**

1,076 Sq.ft.

- **Interior layout :**

4 Room(s), 2 bedroom(s), 1 bathroom, 1 washroom, living room 237 Sq.ft., sitting room 140 Sq.ft., separate kitchen, dining room, dining area, cosy nook, tv den

- **Sleeps - bed(s) :**

2 full bed(s), 2 sleeper sofa(s) 2 pers, 1 baby cradle, 1 possible additional sleeping supplementary

- **Guest facilities :**

T.V., hi-fi system, DVD player, board games, book collection, movie collection, t.v points, phone, cable/satellite, internet access, high speed internet access, wifi (wireless internet access), wardrobe, cupboard, Hanging wardrobe, safe deposit box, hair dryer, central heating, wood-burning stove, Glazed in area, Drapes, Double glazed, entry phone system, intruder alarm, fire alarm, remote controlled gates

- **Appliances :**

Crockery/flatware, kitchen utensils, cafetiere, electric coffee maker, electric espresso coffee maker, toaster, juicer, food processor, electric hobs, oven, micro-wave oven, extractor hood, refrigerator, deep freeze, dish washer, washing machine, clothes dryer, vacuum cleaner, iron, ironing board

### Exterior

- **Size of grounds :**

4,300 Sq.ft.

- **Outside accommodation :**

Terrace 215 Sq.ft.

- **Outside setting :**

Private courtyard, enclosed grounds, yard, landscaped yard, lawn, wooded park, woody, river

- **Outside amenities :**

Summer living area, BBQ, yard table(s), 6 yard seat(s), trolley on wheels, parasol, yard seated area, 2 chaise(s) longue(s), 4 sun recliner(s), outside shower facilities



### Services

- **washing :**

Sheets, Towels, Linen, Comforter(s), Comforter(s), Pillows

- **Single family home :**

Serviced supplement, Cleaning on departure supplement, Parking, Airport transfers supplement

- **Personnel :**

Laundry supplement, Baby sitting supplement

### For your guidance

- **For your guidance**

Kids welcome

Pets accepted under certain conditions (ask the owner)

Present on site : pets, equine animals, farm animals

Cell phone network coverage

Water : hot/cold

Local voltage supply : 220-240V / 50Hz

Electricity supply : mains



Photo album - 1



Photo album - 2



the property



the property

Advert No. 31977

[www.iha.com](http://www.iha.com)



Internet  
Holiday  
Ads



Internet  
Holiday  
Ads



Location & Access



GPS coordinates in degrees, minutes, seconds: Latitude 48° 33'25.812"N - Longitude 7°38'45.42"E ([City](#))

Address

→ 29 rue de Wolfisheim  
67810 Holtzheim

• **Freeway (exit) Aéroport Strasbourg-Holtzheim**

→ Holtzheim, Lower Rhine, Alsace, France  
→ Distance : 1.25mi.  
→ Time : 5'




• **Airport Strasbourg Entzheim**

→ Strasbourg, Lower Rhine, Alsace, France  
→ Distance : 2.5mi.  
→ Time : 10'

• **Railroad station Strasbourg Ville**

→ Strasbourg, Lower Rhine, Alsace, France  
→ Distance : 7,5mi.  
→ Time : 15'

Contact

Last Name	Miss MAÎTRE-SCHROLL Nathalie
Address	31 rue de Wolfisheim
City	67810 HOLTZHEIM
Country	France
Phone #	+33 (0) 3 88 76 19 84 (France) From 08:00 AM to 09:00 PM (GMT/UTC +01:00)
Cell phone #	+33 (0) 6 67 20 56 88 (France)
Spoken languages	  



Charming vacation rental  
 Alsace - France  
**"Pavillon de la Bruche"**

7

[Book now](#)

Availability calendar - from : may 2012

May	Tu	W	Th	F	Sa	Su	M	Tu	W	Th	F	Sa	Su	M	Tu	W	Th	F	Sa	Su	M	Tu	W	Th	F	Sa	Su	M	Tu	W	Th
2012	1	2	3	4	5	6	7	8	9	10	11	12	13	14	15	16	17	18	19	20	21	22	23	24	25	26	27	28	29	30	31
															-	-	-	-	-	-	-	-	-	-	-	-	-	-	-	-	-

June	F	Sa	Su	M	Tu	W	Th	F	Sa	Su	M	Tu	W	Th	F	Sa	Su	M	Tu	W	Th	F	Sa							
2012	1	2	3	4	5	6	7	8	9	10	11	12	13	14	15	16	17	18	19	20	21	22	23	24	25	26	27	28	29	30
	-	-	-	-	-	-	-	-	-	-	-	-	-	-	-	-	-	-	-	-	-	-	-	-	-	-	-	-	-	-

Jul	Su	M	Tu	W	Th	F	Sa	Su	M	Tu	W	Th	F	Sa	Su	M	Tu	W	Th	F	Sa	Su	M	Tu							
2012	1	2	3	4	5	6	7	8	9	10	11	12	13	14	15	16	17	18	19	20	21	22	23	24	25	26	27	28	29	30	31
	-	-	-	-	-	-	-	-	-	-	-	-	-	-	-	-	-	-	-	-	-	-	-	-	-	-	-	-	-	-	

[Month : Next >>](#)

Rental rates - Charming Bungalow - 4 Person(s)

Rates	Night	Weekend	week	2 weeks	Month
<span style="color: green;">■</span> Low season	\$136 * ↓ > 4	\$545 *	\$749 *	\$1363 *	\$2589 *
<span style="color: blue;">■</span> Mid season	\$164 *	\$654 *	\$818 *	\$1499 *	\$2725 *
<span style="color: red;">■</span> High season	\$191 * ↓ > 4	\$763 *	\$954 *	\$1771 *	\$2998 *

↓ Reducing rates > Minimum Night

[Book now](#)





### Booking conditions

● **Reservation**

- Payment made at time of reservation : \$273 \*
- Payment balance : on return of keys
- Deposit required : \$409 \*

● **Rental**

- Cleaning charge levy on departure

### Accepted methods of payment

- International Money Order
- Bank transfer (wire)
- Check
- Draft
- Cash

[▶ Book now](#)

[▶ Contact the owner](#)

Contact directly the property owners

**www.iha.com**  
**Advert No.**  
**31977**  
**>> Book now <<**

### Contact

Last Name	Miss MAÎTRE-SCHROLL Nathalie
Address	31 rue de Wolfisheim
City	67810 HOLTZHEIM
Country	France
Phone #	+33 (0) 3 88 76 19 84 (France) From 08:00 AM to 09:00 PM (GMT/UTC +01:00)
Cell phone #	+33 (0) 6 67 20 56 88 (France)

Spoken languages



\* Converted at the rate indicated : €100 = \$136.26 = £86.8

Advert No. 31977

www.iha.com

