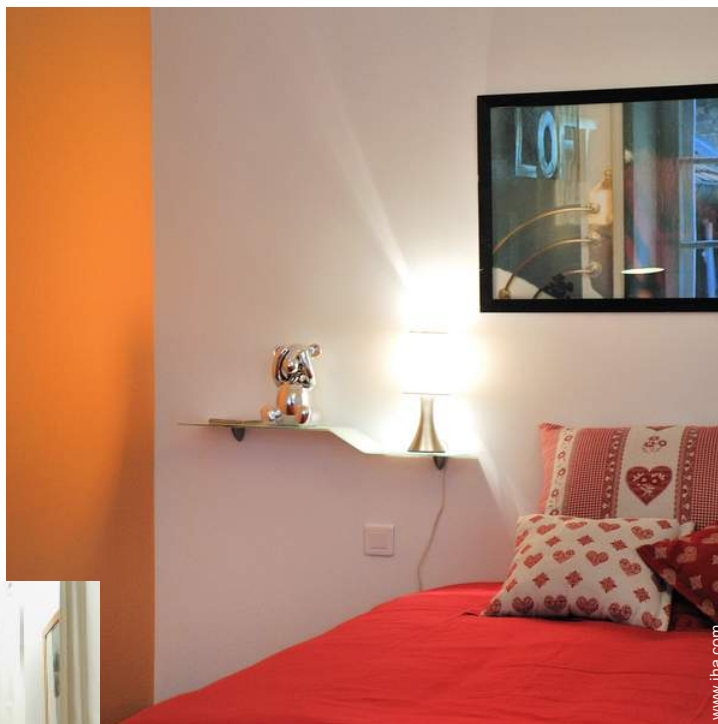


Vacation rental Alsace "Closerie de la Collégiale St Martin"



Loft 2nd floor, shared entrance, in(on)
a(an) Luxury Tudor style house 3 floors

Setting : characteristic, historical

Capacity : 2 person(s)

Bedroom(s) : 1

Room(s) : 2

Colmar - Upper Rhine (68) - Alsace

France

Reservation : +33 (0) 3 89 41 65 79 (France)

Advert No. 71293

www.ihacom.com



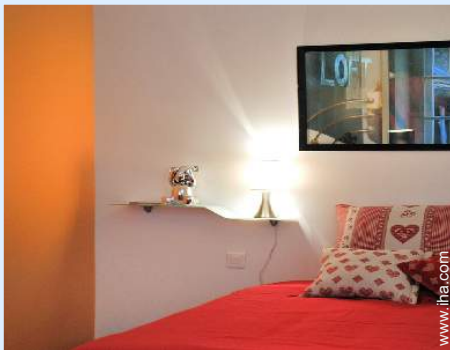
Internet
Holiday
Ads



Internet
Holiday
Ads



Vacation rental



Loft 2nd floor, shared entrance, in(on) a(an) Luxury Tudor style house 3 floors

- **Ideal for couples, couples with baby**
- **View :** city, rooftop, monument, pedestrianized street
- **Setting :** characteristic, historical
- **Exposure :** West

Goodies

- **baby equipment :**
High chair, infant tub, baby potty, playpen



tv den

Surroundings & location



City



Festival



Culture

Leisure

- **Leisure activities less than 12 miles :**

Alpine skiing, cross-country skiing, off-piste skiing, ski-trekking, ice-skating, bathing, golf, tennis, riding school, pathway/broadwalk, coastal/forest paths, hiking, rock climbing, mountain bike (path), paragliding, boat trips, horse-drawn carriage, horse trekking, race track, fishing

- **Supervised :**

Ski school, riding school

- **Attractions and relaxation :**

Bar/pub, restaurant, movie theater, park and garden, leisure park, zoo/animal park, exhibition center, art gallery, historical site, museum, theater, opera house, festivals, antiques & bric-a-brac, local craftstore, casino, natural spring baths, thermal baths, sauna, beauticians, Bio farm

Surroundings

- **Locality :**

- Ski slopes 15.5mi.
- Ski lifts 15.5mi.
- Ice skating rink 1.5mi.
- Heated swimming pool 0.93mi.
- Public swimming pool 0.93mi.
- Public tennis court
- 18 hole golf course 9mi.
- Flying clubs 3mi.
- Watersports centre 1.85mi.
- River 1.5mi.
- Stretch of water 1.85mi.
- Lake 9mi.
- Forest 1.25mi.
- Mountain range 6mi.
- Marina 1.85mi.

- **Amenities :**

- Downtown <165'
- Bus stop / bus station 660'
- Ski bus pick up point 330'
- Bike/mountain bike hire 660'
- Car rental 990'
- Ski hire store
- Breadstore <165'
- Caterer 990'
- Local stores 165'
- Supermarket 660'
- High class retailers 165'
- Hairdressing salon 330'
- Internet cafe 660'
- Mail office 990'
- Bank 165'
- ATM 165'
- Drugstore <165'
- Doctor 330'
- Hospital 0.93mi.



tv den



Interior layout



dining room

Interior

- **Receive up to guest(s) :**

2 person(s) - 2 adults

- **Liveable floor area :**

485 Sq.ft.

- **Interior layout :**

2 Room(s), 1 bedroom(s), 1 shower room, living room 237 Sq.ft., american style kitchen, dining area, tv den, laundry room

- **Sleeps - bed(s) :**

1 queen-size bed(s), 1 baby cradle, 1 possible additional sleeping supplementary

- **Guest facilities :**

T.V., DVD player, book collection, t.v points, cable/satellite, high speed internet access, wifi (wireless internet access), cupboard, Hanging wardrobe, hair dryer, heated towel rail, mobile cool air fan, central heating, Drapes, Blinds, Double glazed, entry phone system, fire alarm

- **Appliances :**

Crockery/flatware, kitchen utensils, cafetiere, electric kettle, toaster, electric hobs, mini-oven, micro-wave oven, extractor hood, refridgerator, washing machine, vacuum cleaner, iron, ironing board

Exterior

- **Outside accommodation :**

Roof terrace 860 Sq.ft., pergola 323 Sq.ft.

- **Outside amenities :**

BBQ, yard table(s), 10 yard seat(s), 3 sun recliner(s)



american style kitchen

Services

- **washing :**

Sheets (1 X / per week), Towels (1 X / per week), Linen (1 X / per week), Comforter(s), Pillows

- **Single family home :**

Serviced supplement (1 X / per week +\$41 *), Cleaning on departure

For your guidance

- **For your guidance**

Kids welcome
Pets accepted under certain conditions (ask the owner)
Non smoking rental, cell phone network coverage
Water : hot/cold
Local voltage supply : 220-240V / 50Hz
Electricity supply : mains



american style kitchen

Floor plan

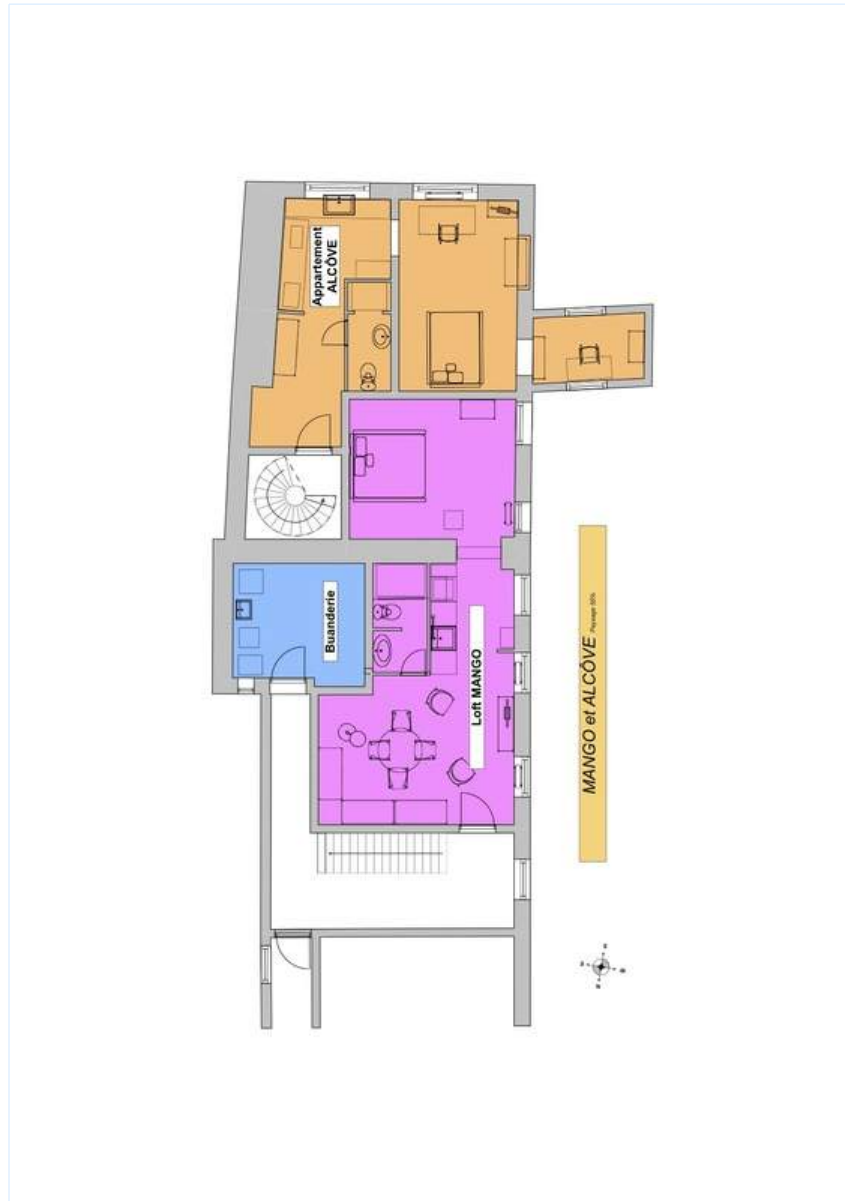


Photo album - 1



Interior layout



tv den



tv den



dining room



american style kitchen

Photo album - 2



american style kitchen

bedroom

bedroom



interior

view from the bedroom

shower room



shower room

roof terrace

roof terrace

Photo album - 3



view from the roof terrace

Single family home

Single family home



façade

view over a pedestrianized street

Single family home

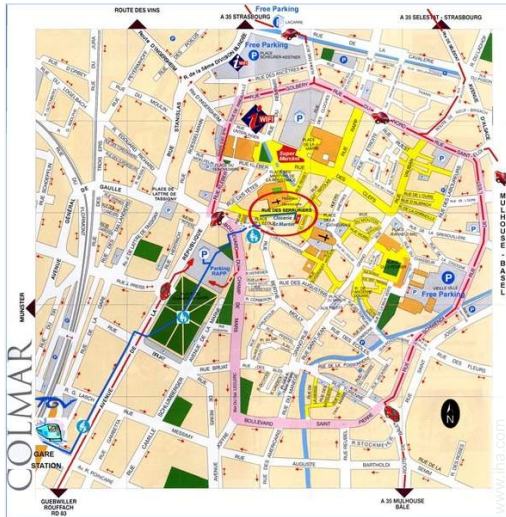


view from the house

Winter

the apartment house/building

Route map



Location & Access



GPS coordinates in degrees, minutes, seconds: Latitude 48°4'40.3"N - Longitude 7° 21'24.8"E (Dwelling)

Address

→ 7 rue des Serruriers
 68000 Colmar

• Freeway (exit) A35

→ Colmar, Upper Rhine, Alsace, France
 → Distance : 0.62mi.
 → Time : 5'

• Railroad station Colmar

→ Colmar, Upper Rhine, Alsace, France
 → Distance : 0.5mi.
 → Time : 10'

• Airport Basel/Mulhouse/Freiburg

→ Mulhouse, Upper Rhine, Alsace, France
 → Distance : 37,3mi.
 → Time : 40'

• Strasbourg : Distance : 46,5mi.

• Basel : Distance : 40mi.

Contact

Last Name Miss DEUTSCHMANN
 Jeannine

Address 1 rue George Sand

City 68000 COLMAR

Country France

Phone # +33 (0) 3 89 41 65 79
 (France)

Cell phone # +33 (0) 6 30 70 79 15
 (France)

Cell phone2 # +33 (0) 6 68 71 89 28
 (France)

Spoken languages



Vacation rental
Upper Rhine - Alsace
"Closerie de la Collégiale St Martin"

9

[Book now](#)

Availability calendar - from : may 2012

May	Tu	W	Th	F	Sa	Su	M	Tu	W	Th	F	Sa	Su	M	Tu	W	Th	F	Sa	Su	M	Tu	W	Th							
2012	1	2	3	4	5	6	7	8	9	10	11	12	13	14	15	16	17	18	19	20	21	22	23	24	25	26	27	28	29	30	31

June	F	Sa	Su	M	Tu	W	Th	F	Sa	Su	M	Tu	W	Th	F	Sa	Su	M	Tu	W	Th	F	Sa							
2012	1	2	3	4	5	6	7	8	9	10	11	12	13	14	15	16	17	18	19	20	21	22	23	24	25	26	27	28	29	30
	-	-	-	-	-	-	-	-	-	-	-	-	-	-	-	-	-	-	-	-	-	-	-	-	-	-	-	-	-	-

Jul	Su	M	Tu	W	Th	F	Sa	Su	M	Tu	W	Th	F	Sa	Su	M	Tu	W	Th	F	Sa	Su	M	Tu							
2012	1	2	3	4	5	6	7	8	9	10	11	12	13	14	15	16	17	18	19	20	21	22	23	24	25	26	27	28	29	30	31
	-	-	-	-	-	-	-	-	-	-	-	-	-	-	-	-	-	-	-	-	-	-	-	-	-	-	-	-	-	-	

Reserved
 Mid season
 High season

[Month : Next >>](#)

Rental rates - Loft - 2 Person(s)

Rates	Night	Weekend	week	2 weeks	Month
■ Low season	\$95 * > 3	-	\$477 * (Saturday)	-	-
■ Mid season	\$102 * > 3	-	\$572 * (Saturday)	-	-
■ High season	\$109 * > 3	-	\$613 * (Saturday)	-	-
■ Festive specials	\$123 * > 3	-	\$763 * (Saturday)	-	-

(Check-in day) > Minimum Night

[Book now](#)

Advert No. 71293

www.ihacom.com



Internet
Holiday
Ads



Internet
Holiday
Ads





tv den

dining room

american style kitchen



Interior layout

tv den

Booking conditions

- **Reservation**

→ Payment made at time of reservation :
30% of rental sum
→ Payment balance :
on return of keys

- **Rental**

→ Service charges included
→ Day tax included

Accepted methods of payment

• Bank transfer (wire) • Check • Cash

[▶ Book now](#)

[▶ Contact the owner](#)

Contact directly the property owners

www.ihacom.com
Advert No.
71293
[>> Book now <<](#)

Contact

Last Name	Miss DEUTSCHMANN Jeannine
Address	1 rue George Sand
City	68000 COLMAR
Country	France
Phone #	+33 (0) 3 89 41 65 79 (France)
Cell phone #	+33 (0) 6 30 70 79 15 (France)
Cell phone2 #	+33 (0) 6 68 71 89 28 (France)

Spoken languages



* Converted at the rate indicated : €100 = \$136.26 = £86.8

Advert No. 71293

www.ihacom.com



Internet
Holiday
Ads



Internet
Holiday
Ads

