

Gîte - Self Catering Comarca de Antequera "Cortijo el Puntal"



Gîte - Self Catering - Former Farm, detached, 1 floor, separate entrance, in(on) a(an) Private road

Setting : country setting, rural

Capacity : 24 person(s)

Bedroom(s) : 10

Room(s) : 16

Teba - Málaga Province - Andalusia

Spain

Advert No. 58332

www.ihacom.com



>> VACATION RENTALS

Internet
Holiday
Ads



Internet
Holiday
Ads



DIRECT BY OWNERS

Gîte - Self Catering



Gîte - Self Catering - Former Farm, detached, 1 floor, separate entrance, in(on) a(an) Private road

- **Ideal for family groups, large families**
- **View :** panoramic, not overlooked, mountain, swimming pool, farmland, village
- **Setting :** country setting, rural

Goodies

- **Swimming pool :**

Private swimming pool, rectangular (length 36', width 16'), illuminated, steps in, step ladder, outside shower

- **Parking :**

Parking uncovered : 14 internal, 14 off road

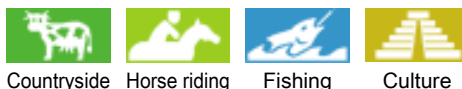
- **Advantages :**

Ping-pong table, ping-pong bats, 1 pétanque set(s)



Swimming pool

Surroundings & location



Countryside Horse riding Fishing Culture

Leisure

- **Leisure activities less than 12 miles :**

Bathing, pedalo, snorkelling, canoeing, rafting, tennis, riding school, pathway/ broadwalk, coastal/forest paths, hiking, rappel, rock climbing, mountain bike (path), parascending, paragliding, horse trekking, go-karting, basketball, hunting, fishing, fishing

- **Supervised :**

Riding school

- **Attractions and relaxation :**

Bar/pub, discotheque, restaurant, movie theater, park and garden, nature reserve, exhibition center, historical site, museum, local craftstore, natural spring baths, fitness center

Surroundings

- **Locality :**

- Sea/ocean >31mi.
- Sea inlet 6mi.
- Public swimming pool 0.62mi.
- Public tennis court 0.62mi.
- River rapids 1.85mi.
- Cliff 4.5mi.
- River 9mi.
- Lake 6mi.
- Forest 6mi.
- Mountain range 165'

- **Amenities :**

- Village center 0.62mi.
- Bus stop / bus station 0.5mi.
- Bus pick up point beach 0.5mi.
- Breadstore 0.62mi.
- Caterer 0.62mi.
- Local stores 0.3mi.
- Supermarket 0.62mi.
- Hairdressing salon 0.62mi.
- Internet cafe 0.62mi.
- Mail office 0.62mi.
- Bank 0.62mi.
- ATM 0.62mi.
- Drugstore 0.62mi.
- Doctor 0.62mi.
- Nurse 0.62mi.
- Hospital 25mi.
- Dispensary 0.62mi.



private courtyard



Swimming pool



View from the property

Interior

- **Receive up to guest(s) :**

24 person(s) - 20 adults, 4 kids

- **Liveable floor area :**

8,600 Sq.ft.

- **Interior layout :**

16 Room(s), 10 bedroom(s), sleeping den, 5 bathroom, 1 shower room, 2 washroom, living room 600 Sq.ft., sitting room 750 Sq. ft., seperate kitchen, dining room, dining area, cosy nook, tv den, games room, walk-in closet, laundry room, pantry, patio

- **Sleeps - bed(s) :**

1 full bed(s), 18 twin bed(s), 5 guest folding bed(s) 1 pers, 3 baby cradle

- **Guest facilities :**

Fireplace, T.V., board games, book collection, t.v points, internet access, wifi (wireless internet access), wardrobe, cupboard, Hanging wardrobe, hair dryer, fully air-conditioned, electric heating, Glazed in area, Drapes, Double glazed

- **Appliances :**

Crockery/flatware, kitchen utensils, cafetiere, electric coffee maker, toaster, juicer, meat broiler, gaz stove, electric stove, electric hobs, micro-wave oven, extractor hood, refridgerator, deep freeze, washing machine, iron

Exterior

- **Size of grounds :**

5 acres

- **Outside accommodation :**

Terrace 1,600 Sq.ft., sundeck 1,076 Sq.ft.

- **Outside setting :**

Private courtyard 1,076 Sq.ft., enclosed grounds 1.5 acre, yard 1,076 Sq.ft., landscaped yard, lawn 4,300 Sq.ft., olive grove, orchard

- **Outside amenities :**

BBQ, yard table(s), yard seat(s), arbour, parasol, yard seated area, 6 sun recliner(s), sand box, outside shower facilities



large bedroom

Services

- **washing :**

Sheets, Towels, Linen, Comforter(s), Comforter(s), Pillows

- **Single family home :**

Cleaning on departure, Yard/swimming pool maintenance, Parking

For your guidance

- **For your guidance**

Kids welcome

Pets accepted under certain conditions (ask the owner)

Present on site : pets

Personal transport advisable

Water : hot/cold

Local voltage supply : 220V / 60Hz

Electricity supply : mains



façade

Floor plan



www.iha.com

Advert No. 58332

www.iha.com



Internet
Holiday
Ads



Internet
Holiday
Ads



DIRECT BY OWNERS

Photo album - 1



Swimming pool



private courtyard



Swimming pool



View from the property



façade

Photo album - 2



large bedroom



Summer



private courtyard



Swimming pool



orchard



Outside setting



aerial view



private courtyard



the property



private courtyard



yard



view of the village

Photo album - 3



bedroom



bedroom



bedroom



Fireplace



bedroom



bedroom



bedroom



bathroom



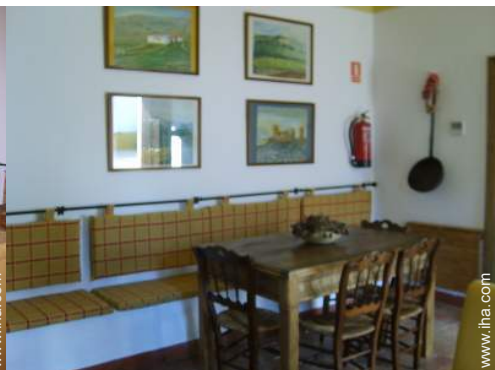
bedroom



Surroundings



Fireplace



Interior layout and facilities

[Favourite photo gallery - 1](#)



Feb 2009



Feb 2008



Feb 2009



Apr 2010



Nov 2008

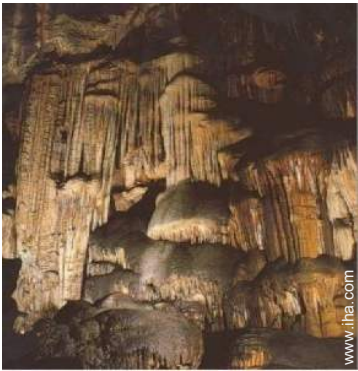


May 2008

Favourite photo gallery - 2



Jan 2008



Favourite photo gallery - 3



Mar 2012



Mar 2012

Mar 2012

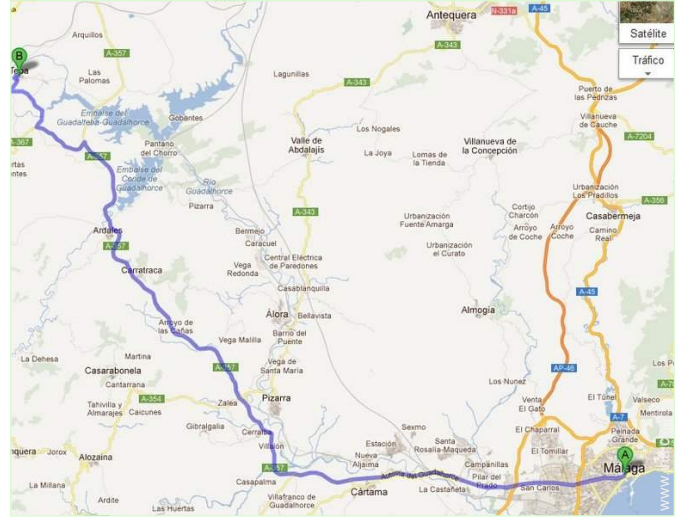
Mar 2012



Mar 2012

Mar 2012

Route map



Location & Access



GPS coordinates in degrees, minutes, seconds: Latitude 36° 58'0.21"N - Longitude 4°55'0.35"W (Dwelling)

Address

→ CN Campillos - Ronda
29327 Teba

• **Airport Málaga Costa del Sol**

→ Málaga, Málaga Province, Andalusia, Spain
→ Distance : 37,3mi.
→ Time : 45'

• **Bus station Teba**

→ Teba, Málaga Province, Andalusia, Spain
→ Distance : 0.5mi.
→ Time : 5'

• **Freeway (exit) 7278**

→ Ronda, Málaga Province, Andalusia, Spain
→ Distance : 13mi.

- Antequera : Distance : 25mi.
- Ronda : Distance : 25mi.
- Campillos : Distance : 6mi.

Contact

Last Name	CORTIJO EI Puntal
Address	CN Campillos- Ronda
City	29327 TEBA (MÁLAGA)
Country	Spain
Phone #	+34 952306145 (Spain)
Cell phone #	+34 670337976 (Spain)
Fax #	+34 952306145 (Spain)

Spoken languages



Gîte - Self Catering
Málaga Province - Teba
"Cortijo el Puntal"

12
[Book now](#)

Availability calendar - from : may 2012

May	Tu	W	Th	F	Sa	Su	M	Tu	W	Th	F	Sa	Su	M	Tu	W	Th	F	Sa	Su	M	Tu	W	Th	F	Sa	Su	M	Tu	W	Th
2012	1	2	3	4	5	6	7	8	9	10	11	12	13	14	15	16	17	18	19	20	21	22	23	24	25	26	27	28	29	30	31
															-	-	-	-	-	-	-	-	-	-	-	-	-	-	-	-	-

June	F	Sa	Su	M	Tu	W	Th	F	Sa	Su	M	Tu	W	Th	F	Sa	Su	M	Tu	W	Th	F	Sa							
2012	1	2	3	4	5	6	7	8	9	10	11	12	13	14	15	16	17	18	19	20	21	22	23	24	25	26	27	28	29	30
	-	-	-	-	-	-	-	-	-	-	-	-	-	-	-	-	-	-	-	-	-	-	-	-	-	-	-	-	-	-

Jul	Su	M	Tu	W	Th	F	Sa	Su	M	Tu	W	Th	F	Sa	Su	M	Tu	W	Th	F	Sa	Su	M	Tu							
2012	1	2	3	4	5	6	7	8	9	10	11	12	13	14	15	16	17	18	19	20	21	22	23	24	25	26	27	28	29	30	31
	-	-	-	-	-	-	-	-	-	-	-	-	-	-	-	-	-	-	-	-	-	-	-	-	-	-	-	-	-	-	

■ Low season ■ Reserved

[Month : Next >>](#)

Rental rates - Gîte - Self Catering - Former Farm - 24 Person(s)

Rates	Night	Weekend	week	2 weeks	Month
■ Low season	-	\$68 *	\$170 *	\$307 *	\$545 *
■ Mid season	-	\$68 *	\$170 *	\$307 *	\$545 *
■ High season	-	\$82 *	\$204 *	\$409 *	\$783 *

[Book now](#)





Swimming pool



View from the property



façade



Swimming pool



private courtyard

Booking conditions

- **Reservation**

→ Payment made at time of reservation : 30% of rental sum
→ Payment balance : on return of keys

- **Rental**

→ Anticipated supplement for :
- supplementary bed(s)
- firewood

[▶ Book now](#)

[▶ Contact the owner](#)

Accepted methods of payment

• International Money Order • Bank transfer (wire) • Cash

Contact directly the property owners

www.iha.com

Advert No.

58332

>> [Book now](#) <<

Contact

Last Name	CORTIJO EI Puntal
Address	CN Campillos- Ronda
City	29327 TEBA (MÁLAGA)
Country	Spain
Phone #	+34 952306145 (Spain)
Cell phone #	+34 670337976 (Spain)
Fax #	+34 952306145 (Spain)

Spoken languages



* Converted at the rate indicated : €100 = \$136.26 = £86.8

Advert No. 58332

www.iha.com



Internet
Holiday
Ads



Internet
Holiday
Ads

