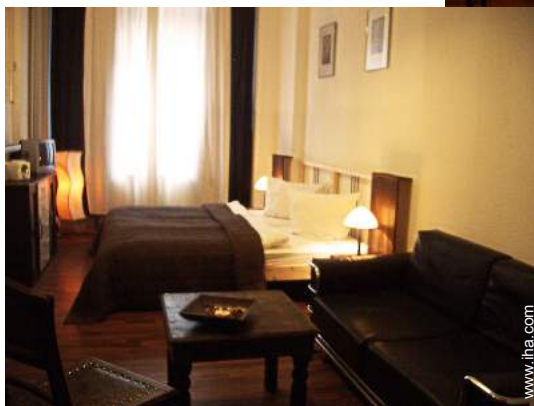


Gîte - Self Catering Prenzlauer Berg "Am Arnimplatz"



Gîte - Self Catering - Apartment-Flat first floor, separate entrance, in (on) a(an) Charming Property

Setting : characteristic, peaceful

Capacity : 6 person(s)

Bedroom(s) : 1

Room(s) : 1



Eurogîtes

Deutscher Tourismusverband (3 stars)



Theme breaks

A taste of country cookery



Berlin - Berlin Sate

Germany

Reservation : +49 (0) 4288108 (Germany)

Advert No. 9215

www.iha.com



>> VACATION RENTALS

Internet
Holiday
Ads



Internet
Holiday
Ads



DIRECT BY OWNERS

Gîte - Self Catering



Gîte - Self Catering - Apartment-Flat first floor, separate entrance, in(on) a(an) Charming Property

- **Ideal for all age groups, group**
- **View :** unobscured, garden/park, courtyard, lake, fantastic sunset, nightlights
- **Setting :** characteristic, peaceful
- **Exposure :** South

Goodies

- **Parking :**
Covered parking : communal
Parking uncovered : internal
- **Advantages :**
10 bike(s), courtesy car
- **baby equipment :**
High chair

Surroundings & location



Leisure

- **Leisure activities less than 12 miles :**

Ice-skating, bathing, pedalo, canoeing, golf, tennis, squash, riding school, pathway/broadwalk, hiking, rappel, mountain bike (path), kite flying, parachuting, horse-drawn carriage, mini-golf, rollerblade/rollerskate (circuit), skate board (ramps), go-karting, ten-pin bowling, basketball, volleyball, fishing

- **Supervised :**

Tennis school, riding school

- **Attractions and relaxation :**

Bar/pub, discotheque, restaurant, movie theater, open air summer movie theater, karaoke, park and garden, leisure park, zoo/animal park, exhibition center, art gallery, historical site, museum, theater, summer theater, opera house, festivals, antiques & bric-a-brac, local craftstore, cellar and wine tasting, casino, race track, thermal baths, sauna, steam baths, health spa, beauticians, fitness center

Surroundings

- **Locality :**

- Ice skating rink 1.5mi.
- Heated swimming pool 0.62mi.
- Public swimming pool 0.62mi.
- Flying clubs 3mi.
- River 2.5mi.
- Forest 3mi.

- **Amenities :**

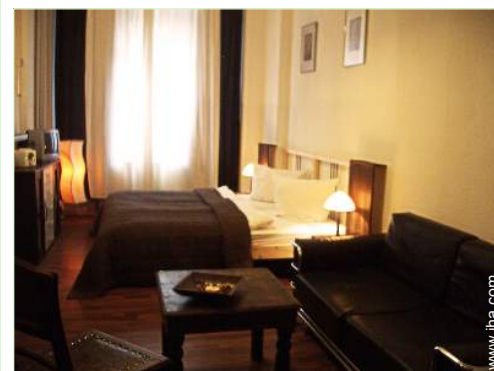
- Downtown 0.3mi.
- Subway station 0.3mi.
- Streetcar system 0.3mi.
- Bike/mountain bike hire <165'
- Household linens for hire/laundry services <165'
- Breadstore <165'
- Caterer <165'
- Local stores <165'
- Supermarket 660'
- High class retailers 0.3mi.
- Hairdressing salon 660'
- Internet cafe 0.3mi.
- Mail office 0.5mi.
- Bank 990'
- ATM 990'
- Drugstore 660'
- Doctor 0.3mi.
- Nurse 0.3mi.
- Hospital 0.3mi.
- Dispensary 0.3mi.



the apartment



the apartment



the apartment



Apartment-Flat

Exterior

- **Size of grounds :**
9,700 Sq.ft.
- **Outside setting :**
Private courtyard 3,300 Sq.ft., wooded park 0.25 acre.
- **Outside amenities :**
Outside bar, child's swing, climbing frame



Charming Property

Interior

- **Receive up to guest(s) :**
6 person(s)
- **Liveable floor area :**
430 Sq.ft.
- **Interior layout :**
1 Room(s), 1 bedroom(s), sleeping den, 1 bathroom, 1 shower room, 1 washroom, living room 430 Sq.ft., seperate kitchen, dining area, tv den, laundry room, pantry, patio
- **Sleeps - bed(s) :**
1 full bed(s), 2 sleeper sofa(s) 2 pers, 2 baby cradle, > 20 possible additional sleeping supplementary
- **Guest facilities :**
T.V., hi-fi system, DVD player, board games, t.v points, cable/satellite, internet access, wifi (wireless internet access), wardrobe, cupboard, Hanging wardrobe, radio alarmclock, hair dryer, power shower, partly air-conditioned, central heating, Drapes, Blinds, Rolling shutters, fire alarm
- **Appliances :**
Crockery/flatware, kitchen utensils, cafetiere, electric coffee maker, electric espresso coffee maker, electric kettle, toaster, food processor, electric hobs, micro-wave oven, refridgerator, deep freeze, washing machine, clothes dryer, vacuum cleaner, iron, ironing board

Services

- **washing :**
Sheets, Towels, Comforter(s), Comforter(s), Pillows
- **Single family home :**
Serviced supplement (1 X / per week +\$41 *), Cleaning on departure supplement (+\$41 *), Caretaker/concierge, Parking
- **Personnel :**
Staff, Chef(s), Chauffeur, Laundry supplement, Beauty treatments, Massage, Guide
- **Restauration :**
Breakfast supplement (+\$8 *), Half board supplement, Full board supplement, Locally produced meals supplement, Picnic basket supplement

For your guidance

- **For your guidance**
Kids welcome
Pets accepted under certain conditions (ask the owner)
Cell phone network coverage
Water : hot/cold
Local voltage supply : 220-240V / 50Hz
Electricity supply : mains
- **Handicapped people welcome**
Fitted out for the disabled : visually impaired, hard of hearing



bathroom

Photo album - 1



the apartment



the apartment

the apartment



Apartment-Flat



bathroom

Photo album - 2



Charming Property

the apartment

the apartment



the apartment

bathroom

the apartment



the apartment house/building

façade

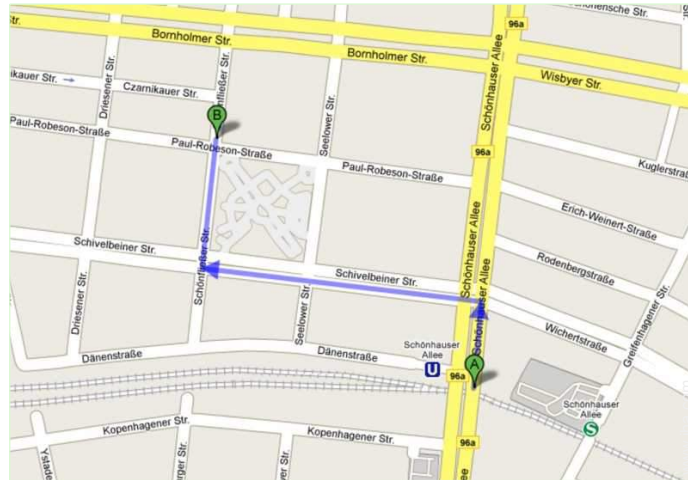
the apartment

Theme breaks

A taste of country cookery



Route map



Location & Access



GPS coordinates in degrees, minutes, seconds: Latitude 52° 33'10"N - Longitude 13°24'31"E (Dwelling)

Address

→ Streustrasse 71
Prenzlauerberg
10437 Berlin

• **Airport Berlin Tegel**

→ Berlin, Berlin Sate, Germany
→ Distance : 1.5mi.
→ Time : 20'

• **Airport Berlin Schönefeld**

→ Berlin, Berlin Sate, Germany
→ Distance : 3mi.
→ Time : 50'

• **Freeway (exit) Prenzlauerpromenade**

→ Berlin, Berlin Sate, Germany
→ Distance : 0.5mi.
→ Time : 10'

• Berlin : Distance : 65'

• Potsdam : Distance : 15.5mi.

Contact

Last Name	Mr. SPEEK Andreas ANDREAS SPEEK
Address	Schönflieger Straße 4 AS - Apartments
City	10439 BERLIN
Country	Germany
Phone #	+49 (0) 4288108 (Germany) From 09:00 AM to 10:00 PM (GMT/UTC +01:00)
Cell phone #	+49 (0) 1772347247 (Germany)
Fax #	+49 (0) 32322347247 (Germany)
Spoken languages	 



Gîte - Self Catering
 Berlin Sate - Prenzlauer Berg
 "Am Arnimplatz"

Availability calendar - from : may 2012

May	Tu	W	Th	F	Sa	Su	M	Tu	W	Th	F	Sa	Su	M	Tu	W	Th	F	Sa	Su	M	Tu	W	Th	F	Sa	Su	M	Tu	W	Th	
2012	1	2	3	4	5	6	7	8	9	10	11	12	13	14	15	16	17	18	19	20	21	22	23	24	25	26	27	28	29	30	31	

June	F	Sa	Su	M	Tu	W	Th	F	Sa	Su	M	Tu	W	Th	F	Sa	Su	M	Tu	W	Th	F	Sa							
2012	1	2	3	4	5	6	7	8	9	10	11	12	13	14	15	16	17	18	19	20	21	22	23	24	25	26	27	28	29	30
	-	-	-	-	-	-	-	-	-	-	-	-	-	-	-	-	-	-	-	-	-	-	-	-	-	-	-	-	-	-

Jul	Su	M	Tu	W	Th	F	Sa	Su	M	Tu	W	Th	F	Sa	Su	M	Tu	W	Th	F	Sa	Su	M	Tu							
2012	1	2	3	4	5	6	7	8	9	10	11	12	13	14	15	16	17	18	19	20	21	22	23	24	25	26	27	28	29	30	31
	-	-	-	-	-	-	-	-	-	-	-	-	-	-	-	-	-	-	-	-	-	-	-	-	-	-	-	-	-	-	

Festive specials Mid season High season

[Month : Next >>](#)

Rental rates - Gîte - Self Catering - Apartment-Flat - 6 Person(s)

Rates	Night	Weekend	week	2 weeks	Month
Low season	\$61 * ↓	-	-	-	-
Mid season	\$75 * ↓	-	-	-	-
High season	\$89 * ↓ > 2	-	-	-	-
Festive specials	\$80 * ↓ > 2	-	-	-	-
Promotional period	\$218 * > 5	-	-	-	-

↓ Reducing rates > Minimum Night

[Book now](#)





the apartment



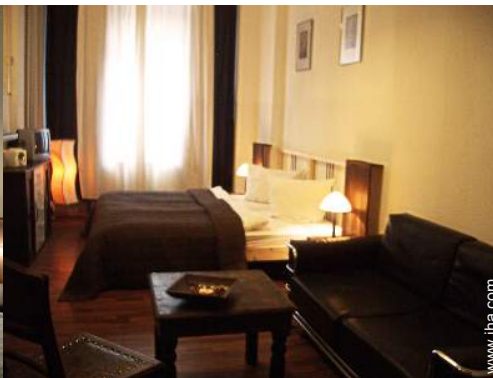
Apartment-Flat



bathroom



the apartment



the apartment

Booking conditions

• Reservation

- Payment made at time of reservation : 20% of rental sum
- Payment balance : on return of keys
- Deposit required : \$68 *

• Rental

- Service charges included
- Cleaning charge levy on departure : \$41 *
- Anticipated supplement for :
 - animals
 - supplementary bed(s)

Accepted methods of payment

- International Money Order
- Bank transfer (wire)
- Cash

[▶ Book now](#)

[▶ Contact the owner](#)

Contact directly the property owners

www.iha.com

Advert No.

9215

[>> Book now <<](#)

Contact

Last Name	Mr. SPEEK Andreas ANDREAS SPEEK
Address	Schönfließler Straße 4 AS - Apartments
City	10439 BERLIN
Country	Germany
Phone #	+49 (0) 4288108 (Germany) From 09:00 AM to 10:00 PM (GMT/UTC +01:00)
Cell phone #	+49 (0) 1772347247 (Germany)
Fax #	+49 (0) 32322347247 (Germany)
Spoken languages	 

* Converted at the rate indicated : €100 = \$136.26 = £86.8

Advert No. 9215

www.iha.com



Internet
Holiday
Ads



Internet
Holiday
Ads

