

Gîte - Self Catering Centro Region (Região Centro) "Casa da Ti Lucinda"



Gîte - Self Catering - Village House, detached, single storey, separate entrance, in(on) a(an) Farm setting

Setting : rural, country setting

Capacity : 9 person(s)

Bedroom(s) : 3

Room(s) : 9

Redinha - Leiria District - Central

Portugal

Advert No. 72356

www.ihacom.com



Internet
Holiday
Ads



Internet
Holiday
Ads



Gîte - Self Catering



Gîte - Self Catering - Village House, detached, single storey, separate entrance, in/on) a(an) Farm setting

- **Ideal for family, couples**
- **View :** panoramic, mountain, garden/park, farmland, forest, river
- **Setting :** rural, country setting
- **Exposure :** East

Goodies

• **Swimming pool :**

Private swimming pool, rectangular (length 26', width 13'), illuminated, steps in, step ladder, outside shower (open from 'april 01' till 'october 31')

• **Parking :**

Covered parking : 2 carport
Parking uncovered : 3 internal

• **Advantages :**

3 bike(s)

• **baby equipment :**

High chair



bedroom

Surroundings & location



Countryside



Fishing



Culture

Leisure

• **Leisure activities less than 12 miles :**

Tennis, pathway/broadwalk, coastal/forest paths, hiking, rock climbing, hang-gliding, paragliding, flying (club), hunting, fishing

• **Attractions and relaxation :**

Bar/pub, discotheque, restaurant, movie theater, park and garden, leisure park, historical site, museum, local craftstore

Surroundings

• **Locality :**

- Sea/ocean 25mi.
- Sandy beach 25mi.
- Public swimming pool 2.5mi.
- Windsurfing spots 25mi.
- River 165'
- Forest 660'
- Mountain range 0.93mi.
- Marina 25mi.

• **Amenities :**

- Village center <165'
- Downtown 9mi.
- Bus stop / bus station 0.62mi.
- Bus pick up point beach 2.5mi.
- Car rental 6mi.
- Household linens for hire/laundry services 330'
- Breadstore 0.93mi.
- Caterer 2.5mi.
- Local stores 0.93mi.
- Supermarket 2.5mi.
- High class retailers 15.5mi.
- Hairdressing salon 2.5mi.
- Mail office 0.93mi.
- Bank 0.93mi.
- ATM 0.93mi.
- Drugstore 0.93mi.
- Doctor 0.93mi.
- Nurse 0.93mi.
- Hospital 6mi.
- Dispensary 0.93mi.



private swimming pool



private swimming pool



bedroom

Interior

- **Receive up to guest(s) :**

9 person(s) - 6 adults, 3 kids

- **Liveable floor area :**

1,600 Sq.ft.

- **Interior layout :**

9 Room(s), 3 bedroom(s), 2 bathroom, 3 shower room, 3 washroom, living room < 100 Sq.ft, shared kitchen facilities, dining room, cosy nook, tv den, reading room, walk-in closet, office

- **Sleeps - bed(s) :**

3 full bed(s), 3 baby cradle

- **Guest facilities :**

Fireplace, T.V., book collection, phone, fax, internet access, high speed internet access, wifi (wireless internet access), wardrobe, cupboard, Hanging wardrobe, heated towel rail, central heating, Drapes, Blinds, Double glazed, entry phone system, fire alarm

- **Appliances :**

Crockery/flatware, kitchen utensils, electric coffee maker, electric espresso coffee maker, electric kettle, toaster, juicer, meat broiler, electric hobs, oven, micro-wave oven, extractor hood, refrigerator, deep freeze, dish washer, vacuum cleaner, iron, ironing board

Exterior

- **Size of grounds :**

2,150 Sq.ft.

- **Outside setting :**

Enclosed grounds, yard, lawn, pinewood, olive grove < 1,076 Sq.ft., orchard < 1,076 Sq.ft., kitchen garden > 0.25 acre, river, wells/spring

- **Outside amenities :**

Pizza oven, BBQ, yard table(s), 12 yard seat (s), trolley on wheels, parasol, 6 chaise(s) longue(s), 12 sun recliner(s), outside shower facilities, outside water closet facilities



kitchen

Services

- **washing :**

Sheets, Towels, Linen, Comforter(s), Comforter(s), Pillows

- **Single family home :**

Serviced, Cleaning on departure, Parking

- **Personnel :**

Staff

- **Restauration :**

Breakfast, Guest table supplement, BBQ meal supplement, Locally produced meals supplement, Picnic basket supplement

For your guidance

- **For your guidance**

Kids welcome

Cell phone network coverage, personal transport advisable

Water : hot/cold

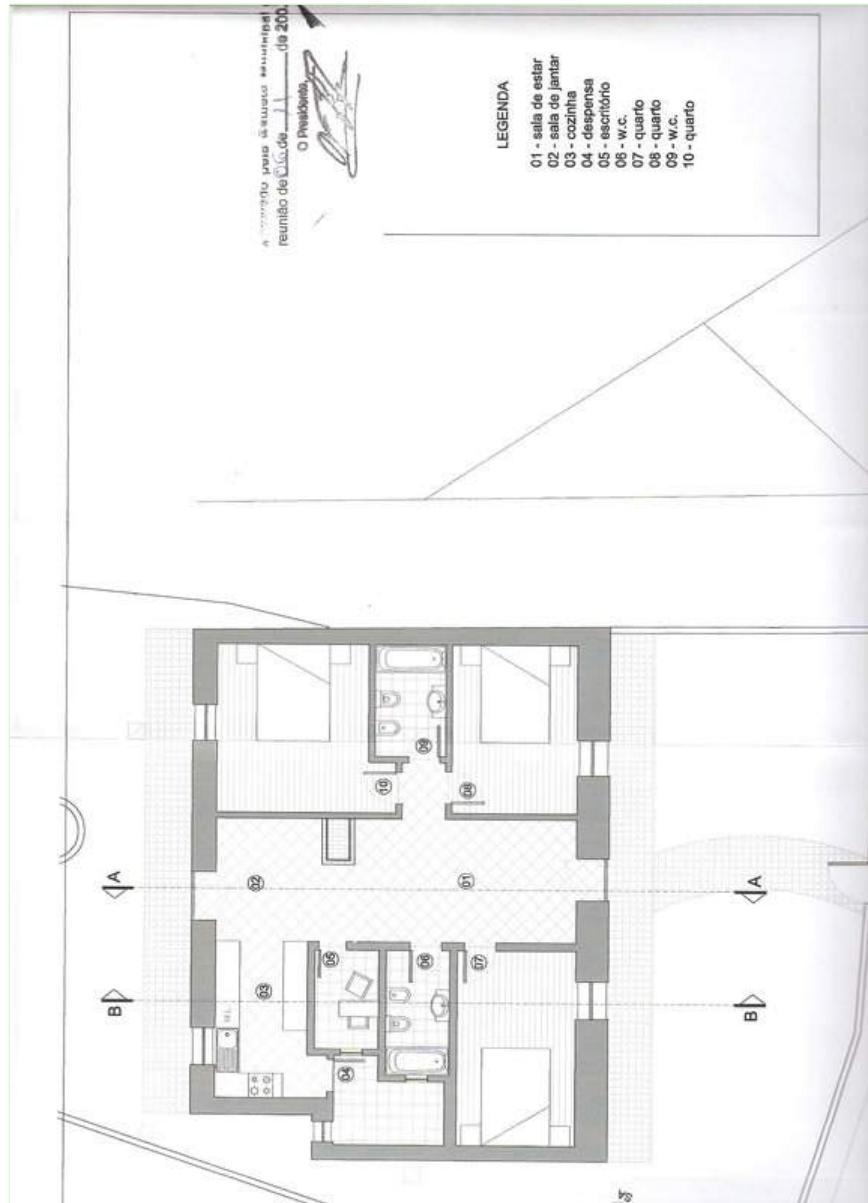
Local voltage supply : 110-120V / 60Hz

Electricity supply : mains



bedroom

Floor plan



www.ihha.com

Advert No. 72356

www.ihha.com



Internet
Holiday
Ads



Internet
Holiday
Ads



Photo album - 1



private swimming pool



private swimming pool



bedroom



bedroom



bedroom

Advert No. 72356

www.iha.com



Internet
Holiday
Ads



Internet
Holiday
Ads



Photo album - 2



kitchen



dining room



tv den



Fireplace



bathroom



bathroom



BBQ



Outside setting



Parking



river



river



river

Photo album - 3



river



mountain range



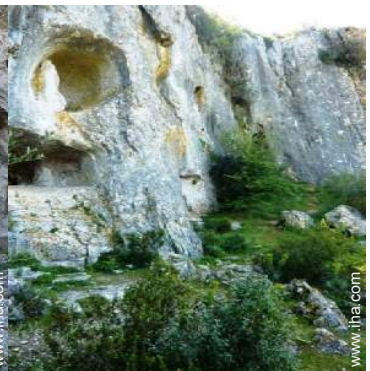
mountain range



view over the mountain



historical site



mountain range



historical site



historical site



historical site



historical site



historical site



Summer

Favourite photo gallery - 1



Nov 2010



Nov 2010



Nov 2010



Nov 2010



Nov 2010



Nov 2010

Favourite photo gallery - 2



Nov 2010



Nov 2010



Nov 2010



Nov 2010



Nov 2010



Nov 2010



Nov 2010



Nov 2010



Nov 2010



Nov 2010



Nov 2010

Location & Access



GPS coordinates in degrees, minutes, seconds: Latitude 40° 1'32.64"N - Longitude 8°35'27.86"W ([Dwelling](#))

Address

→ Rua do Cal d'Órão, no. 44
Figueirinha
3105 Redinha

• Freeway (exit) A1

→ Pombal, Leiria District, Central, Portugal
→ Distance : 7,5mi.
→ Time : 15'

• Freeway (exit) A1

→ Condeixa a Nova, Coimbra District, Central, Portugal
→ Distance : 7,5mi.
→ Time : 15'

• Railroad station Soure

→ Soure, Coimbra District, Central, Portugal
→ Distance : 2.5mi.
→ Time : 10'

- Leiria : Distance : 31mi.
- Pombal : Distance : 7,5mi.
- Coimbra : Distance : 15.5mi.

Contact

Last Name	Mr. MENDES SIMÕES Fernando Casa da Ti Lucinda
Address	Rua do Cal d'Órão no. 44
City	3130 - 527 FIGUEIRINHA - REDINHA
Country	Portugal
Phone #	+351 236912183 (Portugal)
Cell phone #	+351 936461056 (Portugal)
Spoken languages	



Gîte - Self Catering
 Central - Centro Region (Região Centro)
"Casa da Ti Lucinda"

11
[Book now](#)

Availability calendar - from : may 2012

May	Tu	W	Th	F	Sa	Su	M	Tu	W	Th	F	Sa	Su	M	Tu	W	Th	F	Sa	Su	M	Tu	W	Th	F	Sa	Su	M	Tu	W	Th
2012	1	2	3	4	5	6	7	8	9	10	11	12	13	14	15	16	17	18	19	20	21	22	23	24	25	26	27	28	29	30	31
																						-	-	-	-	-	-	-	-	-	-

June	F	Sa	Su	M	Tu	W	Th	F	Sa	Su	M	Tu	W	Th	F	Sa	Su	M	Tu	W	Th	F	Sa	Su	M	Tu	W	Th	F	Sa
2012	1	2	3	4	5	6	7	8	9	10	11	12	13	14	15	16	17	18	19	20	21	22	23	24	25	26	27	28	29	30
	-	-	-	-	-	-	-	-	-	-	-	-	-	-	-	-	-	-	-	-	-	-	-	-	-	-	-	-	-	-

Jul	Su	M	Tu	W	Th	F	Sa	Su	M	Tu	W	Th	F	Sa	Su	M	Tu	W	Th	F	Sa	Su	M	Tu	W	Th	F	Sa	Su	M	Tu
2012	1	2	3	4	5	6	7	8	9	10	11	12	13	14	15	16	17	18	19	20	21	22	23	24	25	26	27	28	29	30	31
	-	-	-	-	-	-	-	-	-	-	-	-	-	-	-	-	-	-	-	-	-	-	-	-	-	-	-	-	-	-	

Mid season
 Reserved
 High season

[Month : Next >>](#)

Rental rates - Gîte - Self Catering - Village House - 9 Person(s)

Rates	Night	Weekend	week	2 weeks	Month
 Low season	\$57 * ↓ > 2	-	\$401 *	-	-
 Mid season	\$57 * ↓ > 2	-	\$401 *	-	-
 High season	\$61 * ↓ > 2	-	\$429 *	-	-
 Festive specials	\$61 * ↓ > 2	-	-	-	-

↓ Reducing rates
> Minimum Night

[Book now](#)





bedroom



bedroom



bedroom



private swimming pool



private swimming pool

Booking conditions

• Reservation

→ Payment made at time of reservation :
30% of rental sum
→ Payment balance :
on return of keys

• Rental

→ Service charges included
→ Cleaning charge on departure included

Accepted methods of payment

• Bank transfer (wire) • Cash

► [Book now](#)

► [Contact the owner](#)

Contact directly the property owners

www.iha.com
Advert No.
72356
>> [Book now](#) <<

Contact

Last Name	Mr. MENDES SIMÕES Fernando Casa da Ti Lucinda
Address	Rua do Cal d'Orão no. 44
City	3130 - 527 FIGUEIRINHA - REDINHA
Country	Portugal
Phone #	+351 236912183 (Portugal)
Cell phone #	+351 936461056 (Portugal)

Spoken
languages



* Converted at the rate indicated : €100 = \$136.26 = £86.8

Advert No. 72356

www.iha.com



>> VACATION RENTALS

Internet
Holiday
Ads



Internet
Holiday
Ads



DIRECT BY OWNERS