

Gîte - Self Catering São Pedro de Nordestinho "Casa da Talha"



Gîte - Self Catering - Charming
Stone-Built House, detached,
single storey, separate entrance

Setting : country setting

Capacity : 2 person(s)

Bedroom(s) : 1

Room(s) : 5



Eco-tourisme

São Pedro de Nordestinho - São Miguel Island - Eastern Group
Azores

Advert No. 64121

www.ihacom.com



>> VACATION RENTALS

Internet
Holiday
Ads



Internet
Holiday
Ads



DIRECT BY OWNERS

Gîte - Self Catering



Gîte - Self Catering - Charming Stone-Built House, detached, single storey, separate entrance

- **Ideal for all age groups, family**
- **View :** panoramic, unobscured, sea/ocean, garden/park, farmland, village
- **Setting :** country setting
- **Exposure :** North

Goodies

- **Parking :**
Parking uncovered : 1 off road
- **Advantages :**
2 bike(s)
- **baby equipment :**
High chair, infant tub



living room

Surroundings & location



Countryside

Leisure

- **Leisure activities less than 12 miles :**
Pathway/broadwalk, coastal/forest paths
- **Attractions and relaxation :**
Bar/pub, restaurant, park and garden, leisure park, nature reserve, museum, local craftstore

Surroundings

- **Locality :**
 - Sea/ocean 0.5mi.
 - Sandy beach 4.5mi.
 - Public swimming pool 3mi.
 - 18 hole golf course 18.5mi.
 - Windsurfing spots 31mi.
 - Cliff 0.5mi.
 - Lake 25mi.
 - Mountain range 1.25mi.
 - Marina >31mi.
- **Amenities :**
 - Village center 330'
 - Bus stop / bus station 330'
 - Breadstore 1.85mi.
 - Local stores 660'
 - Supermarket 3mi.
 - Hairdressing salon 2.5mi.
 - Internet cafe 3mi.
 - Mail office 3mi.
 - Bank 1.85mi.
 - ATM 1.85mi.
 - Drugstore 3mi.
 - Hospital 3mi.



kitchen



Fireplace



bathroom

Interior

- **Receive up to guest(s) :**
2 person(s) - 2 adults
- **Liveable floor area :**
970 Sq.ft.
- **Interior layout :**
5 Room(s), 1 bedroom(s), 1 bathroom, living room 150 Sq.ft., typical style kitchen
- **Sleeps - bed(s) :**
1 queen-size bed(s), 1 possible additional sleeping supplementary
- **Guest facilities :**
Fireplace, T.V., hi-fi system, DVD player, board games, book collection, movie collection, cable/satellite, high speed internet access, wardrobe, cupboard, safe deposit box, hair dryer, heated towel rail, electric heating, Drapes, Double glazed, intruder alarm, fire alarm
- **Appliances :**
Crockery/flatware, kitchen utensils, electric coffee maker, toaster, meat broiler, electric hobs, oven, micro-wave oven, extractor hood, refridgerator, dish washer, washing machine, clothes dryer, vacuum cleaner, iron, ironing board

Exterior

- **Size of grounds :**
6,500 Sq.ft.
- **Outside accommodation :**
Covered terrace 150 Sq.ft.
- **Outside setting :**
Enclosed grounds 6,500 Sq.ft., yard 5,400 Sq.ft.
- **Outside amenities :**
BBQ, yard table(s), 4 yard seat(s), parasol, 3 chaise(s) longue(s)



bedroom

Services

- **washing :**
Sheets (2 X / per week), Towels (2 X / per week), Linen (2 X / per week), Comforter(s), Comforter(s), Pillows
- **Single family home :**
Serviced (2 X / per week), Cleaning on departure, Yard/swimming pool maintenance, Parking, Airport transfers supplement (+ \$165 *)
- **Restauration :**
Locally produced meals supplement (+\$38 *)

For your guidance

- **For your guidance**
Kids welcome
Pets accepted under certain conditions (ask the owner)
Non smoking rental, cell phone network coverage, personal transport advisable
Water : hot/cold
Local voltage supply : 220-240V / 50Hz
Electricity supply : mains
- **Handicapped people welcome**
Wheelchair access
Fitted out for the disabled : mobility



safe deposit box

Floor plan

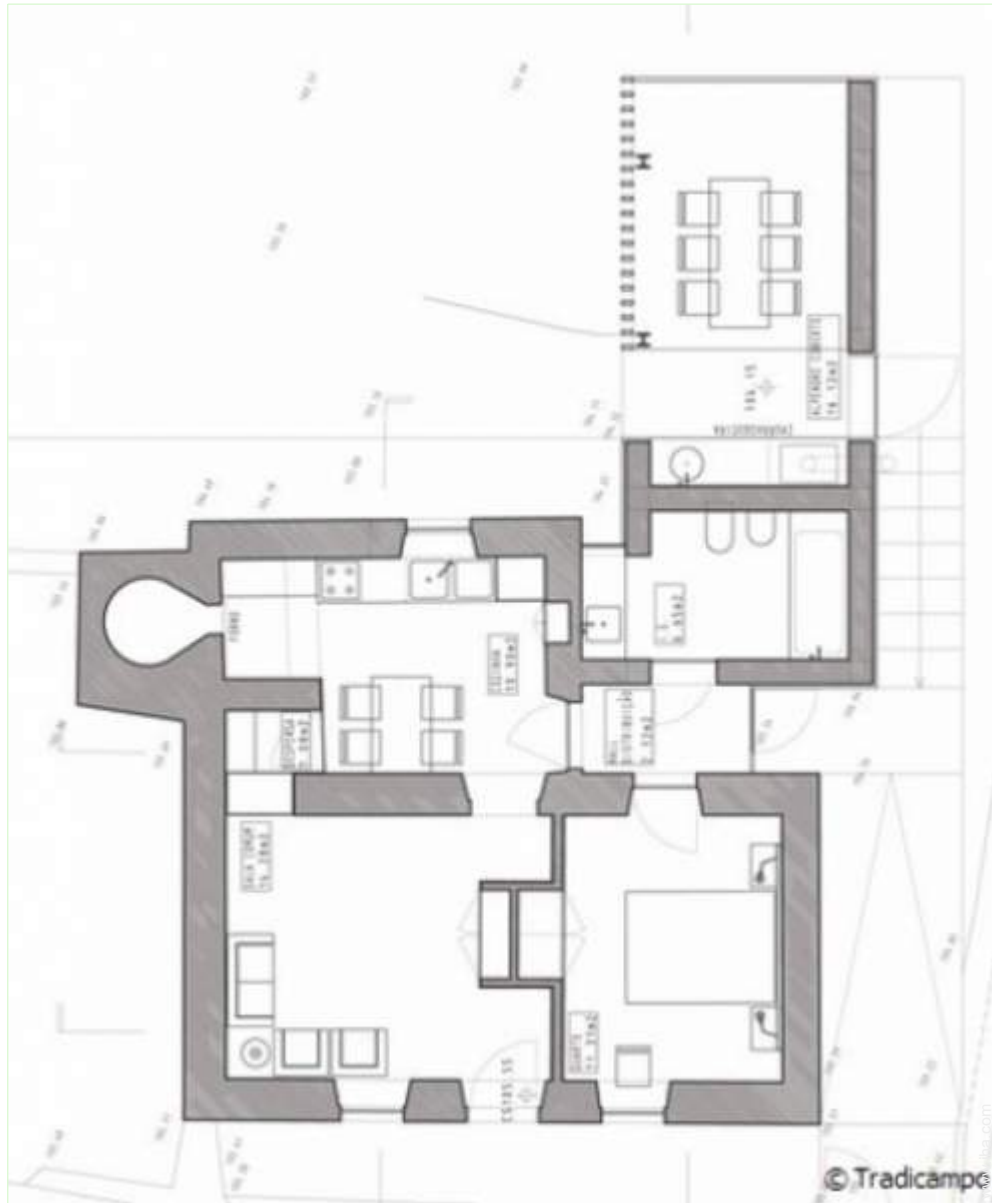


Photo album - 1



Fireplace



kitchen



living room



bathroom



safe deposit box

Photo album - 2



bedroom



kitchen



Outside amenities



ocean view



yard



covered terrace



covered terrace



yard

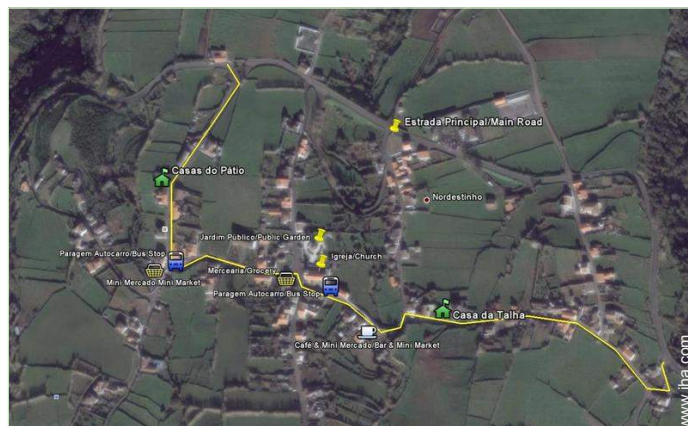


yard



yard

Route map



Location & Access



GPS coordinates in degrees, minutes, seconds: Latitude 37° 50'59.04"N - Longitude 25°11'43.74"W ([Dwelling](#))

Address

→ Rua Padre Diniz da Luz, 38
9630 São Pedro de Nordestinho

• Airport João Paulo II

→ Ponta Delgada, São Miguel Island, Eastern Group, Azores
→ Distance : 37,3mi.
→ Time : 2h15'

• Freeway (exit) Ribeira Grande

→ Ribeira Grande, São Miguel Island, Eastern Group, Azores
→ Distance : 18.5mi.
→ Time : 20'

• Freeway (exit) Nordeste

→ Nordeste, São Miguel Island, Eastern Group, Azores
→ Distance : 3mi.

- Nordeste : Distance : 3mi.
- Ribeira Grande : Distance : 31mi.
- Ponta Delgada : Distance : 40mi.

Contact

Last Name	Mr. OLIVEIRA Ricardo TRADICAMPO
Address	Est Regional Santana 103
City	9600-162 RIBEIRA GRANDE RABO DE PEIXE
Country	Portugal
Phone #	+351 296 491 303 (Portugal) From 10:00 AM to 05:00 PM (GMT/UTC -01:00)
Cell phone #	+351 966 025 812 (Portugal)
Spoken languages	



Gîte - Self Catering
 São Miguel Island - Eastern Group
 "Casa da Talha"

[Book now](#)

Availability calendar - from : may 2012

May	Tu	W	Th	F	Sa	Su	M	Tu	W	Th	F	Sa	Su	M	Tu	W	Th	F	Sa	Su	M	Tu	W	Th	F	Sa	Su	M	Tu	W	Th	
2012	1	2	3	4	5	6	7	8	9	10	11	12	13	14	15	16	17	18	19	20	21	22	23	24	25	26	27	28	29	30	31	
																							-	-	-	-	-	-	-	-	-	-

June	F	Sa	Su	M	Tu	W	Th	F	Sa	Su	M	Tu	W	Th	F	Sa	Su	M	Tu	W	Th	F	Sa							
2012	1	2	3	4	5	6	7	8	9	10	11	12	13	14	15	16	17	18	19	20	21	22	23	24	25	26	27	28	29	30
	-	-	-	-	-	-	-	-	-	-	-	-	-	-	-	-	-	-	-	-	-	-	-	-	-	-	-	-	-	-

Jul	Su	M	Tu	W	Th	F	Sa	Su	M	Tu	W	Th	F	Sa	Su	M	Tu	W	Th	F	Sa	Su	M	Tu							
2012	1	2	3	4	5	6	7	8	9	10	11	12	13	14	15	16	17	18	19	20	21	22	23	24	25	26	27	28	29	30	31
	-	-	-	-	-	-	-	-	-	-	-	-	-	-	-	-	-	-	-	-	-	-	-	-	-	-	-	-	-	-	

■ Mid season
 ■ Reserved
 ■ High season

[Month : Next >>](#)

Rental rates - Gîte - Self Catering - Charming Stone-Built House - 2 Person(s)

Rates	Night	Weekend	week	2 weeks	Month
■ Low season	\$83 * ↓ > 3	-	\$445 *	\$711 *	-
■ Mid season	\$102 * > 3	-	\$533 *	-	-
■ High season	\$102 * ↓ > 3	-	\$622 *	-	-

[↓ Reducing rates](#) > Minimum Night

[Book now](#)





living room



bathroom



safe deposit box



Fireplace



kitchen

Booking conditions

• **Reservation**

→ Payment made at time of reservation : 30% of rental sum
→ Payment balance : on return of keys

• **Rental**

→ Service charges included
→ Day tax included
→ Cleaning charge on departure included
→ Anticipated supplement for :
- supplementary bed(s)

[▶ Book now](#)

[▶ Contact the owner](#)

Accepted methods of payment

• Bank transfer (wire) • PayPal • Cash

Contact directly the property owners

www.ihacom.com

Advert No.

64121

[>> Book now <<](#)

Contact

Last Name Mr. OLIVEIRA Ricardo
TRADICAMPO
Address Est Regional Santana 103
City 9600-162 RIBEIRA
GRANDE RABO DE
PEIXE
Country Portugal
Phone # +351 296 491 303
(Portugal) From 10:00 AM
to 05:00 PM (GMT/UTC
-01:00)
Cell phone # +351 966 025 812
(Portugal)

Spoken languages



* Converted at the rate indicated : €100 = \$127 = £86.8

Advert No. 64121

www.ihacom.com



Internet
Holiday
Ads



Internet
Holiday
Ads

