

Charming vacation rental Nettle Bay Charming Apartment



Charming Apartment first floor,
seperate entrance, in(on) a(an) Private
estate 1 floor

Setting : heavenly

Capacity : **6 person(s)**

Bedroom(s) : **2**

Room(s) : **2**

Nettle Bay - French Side

St Martin

Reservation : +590 (0) 690778348 (Guadeloupe)



Advert No. 46216

www.ihacom.com



>> VACATION RENTALS

Internet
Holiday
Ads



Internet
Holiday
Ads



DIRECT BY OWNERS

Charming vacation rental



Charming Apartment first floor, separate entrance, in(on) a(an) Private estate 1 floor

- **Ideal for all age groups, large families**
- **View :** panoramic, unobscured, not overlooked, sea/ocean, swimming pool, fantastic sunset
- **Setting :** heavenly
- **Exposure :** South

Goodies

- **Swimming pool :**
Shared swimming pool, rectangular (length 65', width 26'), illuminated, steps in, child secure, outside shower (open from 'january 01' till 'december 31')
- **Tennis :**
Shared tennis
- **Parking :**
Parking uncovered : internal

Benefits :
Direct access to the beach, private beach



interior

Surroundings & location



Ocean

Leisure

- **Leisure activities less than 12 miles :**

Scuba diving, water skiing, jet ski, surfing, windsurfing, sailing, kite surfing, canoeing, golf, mini-golf, basketball, volleyball, paintball, fishing, deep-sea fishing, fishing, spear fishing

- **Supervised :**

Sailing school, dive school, riding school

- **Attractions and relaxation :**

Bar/pub, discotheque, restaurant, movie theater, zoo/animal park, art gallery, casino, thalassotherapy center, sauna, steam baths, health spa, beauticians, fitness center

Surroundings

- **Locality :**

- Sea/ocean <165'
- Sandy beach <165'
- Nudist beach 3mi.
- Flying clubs 1.25mi.
- Cliff 0.5mi.
- Marina 0.93mi.

- **Amenities :**

- Downtown 0.62mi.
- Scuba diving material hire <165'
- Breadstore <165'
- Caterer 165'
- Local stores 165'
- Supermarket 330'
- High class retailers 0.62mi.
- Hairdressing salon 0.3mi.
- Internet cafe 0.3mi.
- Mail office 0.3mi.
- Bank 0.3mi.
- ATM <165'
- Drugstore 165'
- Doctor <165'
- Nurse 330'
- Hospital 0.62mi.



Guest facilities



Surroundings



Guest facilities

Interior

- **Receive up to guest(s) :**
6 person(s) - 4 adults, 2 kids
- **Liveable floor area :**
530 Sq.ft.
- **Interior layout :**
2 Room(s), 2 bedroom(s), shower room, washroom, living room, sitting room, seperate kitchen, tv den, walk-in closet
- **Sleeps - bed(s) :**
2 full bed(s), 2 queen-size bed(s), 3 bunk beds
- **Guest facilities :**
T.V., DVD player, t.v points, phone, cable/satelite, internet access, high speed internet access, wifi (wireless internet access), wardrobe, cupboard, Hanging wardrobe, fully air-conditioned, Glazed in area, Rolling shutters, digipad entry system, remote controlled gates, digipad entry gates
- **Appliances :**
Crockery/flatware, kitchen utensils, cafetiere, toaster, electric hobs, mini-oven, micro-wave oven, refridgerator, deep freeze, ice maker, dish washer, washing machine

Exterior

- **Outside accommodation :**
Terrace 270 Sq.ft., covered terrace 215 Sq.ft.
- **Outside setting :**
Yard, tropical garden, lawn, wooded park
- **Outside amenities :**
Summer living area, yard table(s), yard seat (s), 2 chaise(s) longue(s), 2 sun recliner(s), sand box

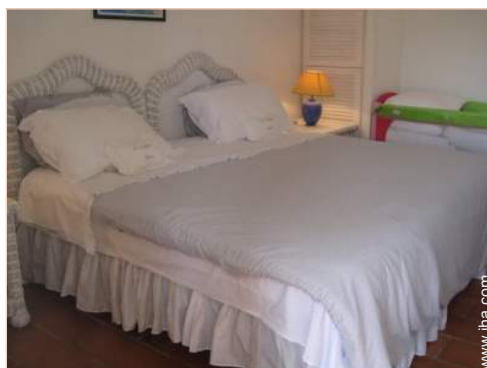


Services

- **washing :**
Sheets, Towels, Linen, Beach towels, Comforter(s), Comforter(s), Pillows
- **Single family home :**
Serviced, Cleaning on departure, Yard/swimming pool maintenance, Caretaker/concierge, Parking, Airport transfers
- **Personnel :**
Staff

For your guidance

- **For your guidance**
Kids welcome
Pets friendly
Cell phone network coverage
Water : hot/cold
Local voltage supply : 220-240V / 50Hz
Electricity supply : mains



full bed(s)

Photo album - 1



Surroundings



Guest facilities



interior



Guest facilities



full bed(s)

Photo album - 2



interior



Ocean

Charming vacation rental
Nettle Bay - St Martin
Charming Apartment

6

[Book now](#)

Location & Access



GPS coordinates in degrees, minutes, seconds: Latitude 18° 4'4.8"N - Longitude 63°6'14.4"W ([City](#))

Address

→ Residence Baie Nettle Beach Club
Appartement 3170
97150 Nettle Bay

• [Airport St. Maarten Princess Juliana](#)

→ Philipsburg, Dutch side, St Martin
→ Distance : 2.5mi.
→ Time : 5'

• Lowlands - Terres Basses : Distance : 2.5mi.

Contact

Last Name	Miss FREVILLE Sylvie
Address	Baie Nettlé Beach Club Appartement 3170 BAIE NETTLE
City	97150 SAINT MARTIN
Country	Netherlands Antilles
Cell phone #	+590 (0) 690778348 (Guadeloupe)
Cell phone2 #	+33 (0) 610525030 (France)
Spoken languages	 

Advert No. 46216

www.ihacom.com



Internet
Holiday
Ads



Internet
Holiday
Ads



Charming vacation rental
 French Side - Nettle Bay
Charming Apartment

7

[Book now](#)

Availability calendar - from : may 2012

May	Tu	W	Th	F	Sa	Su	M	Tu	W	Th	F	Sa	Su	M	Tu	W	Th	F	Sa	Su	M	Tu	W	Th	F	Sa	Su	M	Tu	W	Th	
2012	1	2	3	4	5	6	7	8	9	10	11	12	13	14	15	16	17	18	19	20	21	22	23	24	25	26	27	28	29	30	31	

June	F	Sa	Su	M	Tu	W	Th	F	Sa	Su	M	Tu	W	Th	F	Sa	Su	M	Tu	W	Th	F	Sa							
2012	1	2	3	4	5	6	7	8	9	10	11	12	13	14	15	16	17	18	19	20	21	22	23	24	25	26	27	28	29	30
	-	-	-	-	-	-	-	-	-	-	-	-	-	-	-	-	-	-	-	-	-	-	-	-	-	-	-	-	-	-

Jul	Su	M	Tu	W	Th	F	Sa	Su	M	Tu	W	Th	F	Sa	Su	M	Tu	W	Th	F	Sa	Su	M	Tu							
2012	1	2	3	4	5	6	7	8	9	10	11	12	13	14	15	16	17	18	19	20	21	22	23	24	25	26	27	28	29	30	31
	-	-	-	-	-	-	-	-	-	-	-	-	-	-	-	-	-	-	-	-	-	-	-	-	-	-	-	-	-	-	

[Month : Next >>](#)

Rental rates - Charming Apartment - 6 Person(s)

Rates	Night	Weekend	week	2 weeks	Month
■ Low season	-	-	\$889 *	-	-
■ Mid season	-	-	\$1143 *	-	-
■ High season	-	-	\$1143 *	-	-
■ Festive specials	-	-	\$1524 *	-	-

[Book now](#)





interior



Guest facilities



full bed(s)



Surroundings



Guest facilities

Booking conditions

- **Reservation**

→ Payment balance :
on return of keys

- **Rental**

→ Service charges included
→ Day tax included
→ Cleaning charge on departure included

Accepted methods of payment

• Bank transfer (wire) • Travellers
Cheques • Cash

[▶ Book now](#)

[▶ Contact the owner](#)

Contact directly the property owners

www.iha.com
Advert No.
46216
>> Book now <<

Contact

Last Name	Miss FREVILLE Sylvie
Address	Baie Nettle Beach Club Appartement 3170 BAIE NETTLE
City	97150 SAINT MARTIN
Country	Netherlands Antilles
Cell phone #	+590 (0) 690778348 (Guadeloupe)
Cell phone2 #	+33 (0) 610525030 (France)

Spoken
languages



* Converted at the rate indicated : €100 = \$127 = £86.8

Advert No. 46216

www.iha.com



Internet
Holiday
Ads



Internet
Holiday
Ads

