

Vacation rental Nettle Bay "472 - Nettle Bay Beach Club"



Studio Flat 2nd floor, separate entrance, in(on) a(an) Private estate 1 floor

Setting : foot-in-the water, enchanting

Capacity : 2 person(s)
Bedroom(s) : 1

Nettle Bay - French Side

St Martin

Reservation : +590 (0) 5 90 87 21 15 (Guadeloupe)

Advert No. 33735

www.iha.com



Internet
Holiday
Ads



Internet
Holiday
Ads



Vacation rental



Studio Flat 2nd floor, separate entrance, in (on) a(an) Private estate 1 floor

- **Ideal for couples, couples with baby**
- **View :** panoramic, unobscured, not overlooked, sea/ocean, swimming pool
- **Setting :** foot-in-the water, enchanting
- **Exposure :** West

Goodies

- **Swimming pool :**
 Shared swimming pool, unusual (length 60', width 23'), illuminated, steps in, child secure, plunge pool, outside shower (open from 'january 01' till 'december 31')
- **Tennis :**
 Shared tennis, Surface hard, 2 tennis racket (s)
- **Parking :**
 Parking uncovered : 14 internal
- **baby equipment :**
 Comfort station, baby potty

Benefits :
 Direct access to the beach



aerial view

Surroundings & location



Leisure

- **Leisure activities less than 12 miles :**
 Bathing, pedalo, scuba diving, water skiing, jet ski, surfing, windsurfing, sailing, kite surfing, canoeing, golf, tennis, riding school, pony club, coastal/forest paths, hiking, mountain bike (path), flying (club), boat trips, horse trekking, skate board (ramps), ATV/ Quad Bike, ten-pin bowling, baseball, basketball, paintball, acrobatics, deep-sea fishing, spear fishing, pétanque field
- **Supervised :**
 Sailing school, dive school, tennis school, riding school
- **Attractions and relaxation :**
 Bar/pub, discotheque, restaurant, movie theater, karaoke, zoo/animal park, nature reserve, art gallery, museum, casino, thalassotherapy center, sauna, health spa, beauticians, fitness center

Surroundings

- **Locality :**
 - Sea/ocean <165'
 - Sandy beach 165'
 - Rocky beach <165'
 - Nudist beach 9mi.
 - Sea inlet 0.62mi.
 - 18 hole golf course 2.5mi.
 - Flying clubs 6mi.
 - Windsurfing spots <165'
 - Surfing spots 9mi.
 - Watersports centre 1.25mi.
 - Stretch of water 330'
 - Mountain range 1.85mi.
 - Marina 1.25mi.
 - Slipway 660'
 - Jetski slipway 165'
- **Amenities :**
 - Village center 330'
 - Downtown 1.5mi.
 - Bus stop / bus station 165'
 - Bike/mountain bike hire 330'
 - Scooter/motorbike hire 330'
 - Car rental 330'
 - Boat rental 1.25mi.
 - Scuba diving material hire 330'
 - Breadstore 330'
 - Caterer 330'
 - Local stores 330'
 - Supermarket 1.85mi.
 - High class retailers 1.25mi.
 - Hairdressing salon 330'
 - Internet cafe 330'
 - Mail office 330'
 - Bank 1.5mi.
 - ATM 0.93mi.
 - Drugstore 330'

- Doctor 1.25mi.
- Hospital 1.85mi.



aerial view



View from the property



aerial view

Interior

- **Receive up to guest(s) :**

2 person(s)

- **Liveable floor area :**

430 Sq.ft.

- **Interior layout :**

1 bedroom(s), 1 shower room, 1 washroom, living room, sitting room, kitchenette, dining area

- **Sleeps - bed(s) :**

1 full bed(s), 1 king-size bed(s), 1 sleeper sofa(s) 2 pers, 1 sleeper sofa(s) 1 pers, 1 baby cradle

- **Guest facilities :**

T.V., hi-fi system, DVD player, board games, book collection, t.v points, cable/satellite, internet access, high speed internet access, wifi (wireless internet access), cupboard, Hanging wardrobe, safe deposit box, hair dryer, heated towel rail, fully air-conditioned, mobile cool air fan, Drapes, Blinds, Rolling shutters, remote controlled gates

- **Appliances :**

Crockery/flatware, kitchen utensils, electric coffee maker, electric kettle, toaster, juicer, meat broiler, electric hobs, micro-wave oven, refridgerator, vacuum cleaner, iron, ironing board

Exterior

- **Outside accommodation :**

Sundeck 110 Sq.ft.

- **Outside setting :**

Tropical garden, wooded park 12.5 acres

- **Outside amenities :**

BBQ, 2 chaise(s) longue(s), 1 hammock(s)



full bed(s)

Services

- **washing :**

Sheets (1 X / per week), Towels (1 X / per week), Linen (1 X / per week), Beach towels (1 X / per week), Comforter(s), Pillows (1 X / per week)

- **Single family home :**

Serviced supplement (1 X / per week +\$15 *), Cleaning on departure, Parking

For your guidance

- **For your guidance**

Kids welcome

Pets friendly

Present on site : pets

Cell phone network coverage, personal transport advisable

Water : hot/cold, water not drinkable

Local voltage supply : 220V / 60Hz

Electricity supply : mains

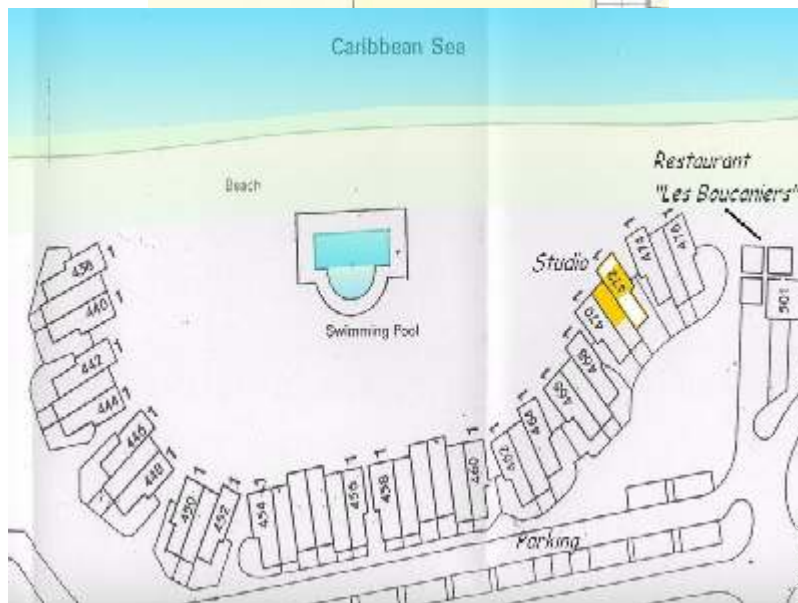
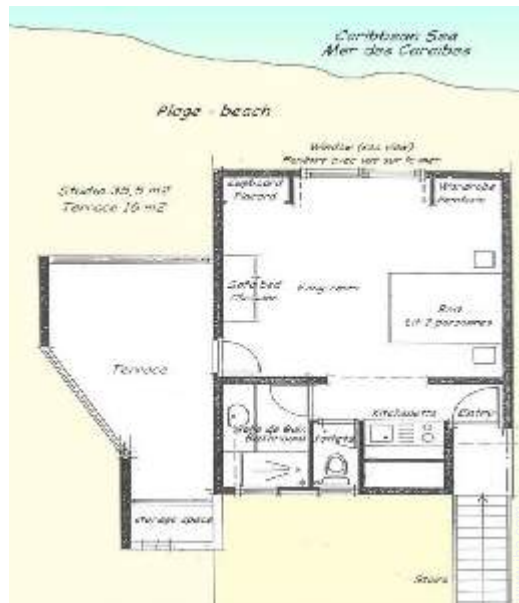


Kitchen Area

Vacation rental
French Side - St Martin
"472 - Nettle Bay Beach Club"

4
[Book now](#)

Floor plan



Advert No. 33735

www.ihacom.com



Internet
Holiday
Ads



Internet
Holiday
Ads



Vacation rental
Nettle Bay - St Martin
"472 - Nettle Bay Beach Club"

5
[Book now](#)

Photo album - 1



View from the property



aerial view



aerial view



aerial view



Kitchen Area

Advert No. 33735

www.ihacom.com



Internet
Holiday
Ads



Internet
Holiday
Ads



Photo album - 2



full bed(s)



living room



shower room



sitting room



sundeck



view from the living room



view from the living room



view from the living room



easterly view



westery view

Vacation rental
French Side - Nettle Bay
"472 - Nettle Bay Beach Club"

7
[Book now](#)

Photo album - 3



Studio Flat



Swimming pool



bathing



bathing



ocean view



ocean view



windsurfing



Ocean



sailing



Ocean

Advert No. 33735

www.iha.com



>> VACATION RENTALS

Internet
Holiday
Ads

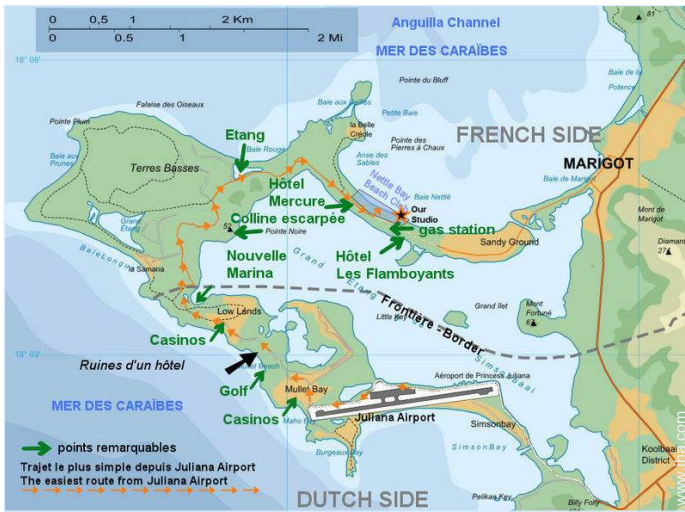


Internet
Holiday
Ads



DIRECT BY OWNERS

Route map



Location & Access

GPS coordinates in degrees, minutes, seconds: Latitude 18°3'42.75"N - Longitude 63°6'36.52"W (Dwelling)

Address

→ 4721, Nettle Bay Beach Club
 97150 Nettle Bay

● Airport St. Maarten Princess Juliana

→ Philipsburg, Dutch side, St Martin
 → Distance : 2.5mi.
 → Time : 15'

● Airport Saint Martin Grand Case Esperance

→ Grand Case, French Side, St Martin
 → Distance : 6mi.
 → Time : 40'

● Sea port Marigot

→ Marigot, French Side, St Martin
 → Distance : 1.85mi.
 → Time : 15'

- Lowlands - Terres Basses : Distance : 1.85mi.
- Marigot : Distance : 1.85mi.
- Philipsburg : Distance : 3mi.

Contact

Last Name	Mr. Mrs. AIRIAU Patrice
Address	3180, Nettle bay Beach Club
City	97150 ILE DE ST MARTIN
Country	Guadeloupe
Phone #	+590 (0) 5 90 87 21 15 (Guadeloupe) From 09:00 AM to 08:00 PM (ATL/ GMT -04:00)
Cell phone #	+590 (0) 6 90 33 71 21 (Guadeloupe)
Cell phone2 #	+590 (0) 6 90 31 34 10 (Guadeloupe)

Spoken languages

Vacation rental
 Nettle Bay - St Martin
"472 - Nettle Bay Beach Club"

9
[Book now](#)

Availability calendar - from : may 2012





May	Tu	W	Th	F	Sa	Su	M	Tu	W	Th	F	Sa	Su	M	Tu	W	Th	F	Sa	Su	M	Tu	W	Th	F	Sa	Su	M	Tu	W	Th	
2012	1	2	3	4	5	6	7	8	9	10	11	12	13	14	15	16	17	18	19	20	21	22	23	24	25	26	27	28	29	30	31	

June	F	Sa	Su	M	Tu	W	Th	F	Sa	Su	M	Tu	W	Th	F	Sa	Su	M	Tu	W	Th	F	Sa							
2012	1	2	3	4	5	6	7	8	9	10	11	12	13	14	15	16	17	18	19	20	21	22	23	24	25	26	27	28	29	30
	-	-	-	-	-	-	-	-	-	-	-	-	-	-	-	-	-	-	-	-	-	-	-	-	-	-	-	-	-	-

Jul	Su	M	Tu	W	Th	F	Sa	Su	M	Tu	W	Th	F	Sa	Su	M	Tu	W	Th	F	Sa	Su	M	Tu							
2012	1	2	3	4	5	6	7	8	9	10	11	12	13	14	15	16	17	18	19	20	21	22	23	24	25	26	27	28	29	30	31
	-	-	-	-	-	-	-	-	-	-	-	-	-	-	-	-	-	-	-	-	-	-	-	-	-	-	-	-	-	-	

[Month : Next >>](#)

Rental rates - Studio Flat - 2 Person(s)

Rates	Night	Weekend	week	2 weeks	Month
 Low season	-	-	\$508 *	\$889 *	\$1524 *
 Mid season	-	-	\$635 *	\$1143 *	\$1905 *
 High season	-	-	\$762 *	\$1397 *	\$2286 *
 Festive specials	-	-	\$826 *	\$1524 *	\$2413 *

[Book now](#)



Vacation rental
 Nettle Bay - St Martin
 "472 - Nettle Bay Beach Club"

10
[Book now](#)



aerial view



aerial view



Kitchen Area



View from the property



aerial view

Booking conditions

• **Reservation**

- Payment made at time of reservation : 50% of rental sum
- Payment balance : on return of keys

• **Rental**

- Service charges included
- Day tax included
- Cleaning charge on departure included

[▶ Book now](#)

[▶ Contact the owner](#)

Accepted methods of payment

- Bank transfer (wire) • Check • PayPal • Cash

Contact directly the property owners

www.ihacom.com
 Advert No.
 33735
 >> Book now <<

Contact

Last Name	Mr. Mrs. AIRIAU Patrice
Address	3180, Nettle bay Beach Club
City	97150 ILE DE ST MARTIN
Country	Guadeloupe
Phone #	+590 (0) 5 90 87 21 15 (Guadeloupe) From 09:00 AM to 08:00 PM (ATL/ GMT -04:00)
Cell phone #	+590 (0) 6 90 33 71 21 (Guadeloupe)
Cell phone2 #	+590 (0) 6 90 31 34 10 (Guadeloupe)
Spoken languages	

* Converted at the rate indicated : €100 = \$127 = £86.8

Advert No. 33735

www.ihacom.com



Internet
 Holiday
 Ads



Internet
 Holiday
 Ads

