

# Vacation rental Nouméa "Domaine de la Baie - Alizée"



Meublés de Tourisme (2 stars)

Studio Flat first floor, separate entrance, in(on) a(an) Villa 1 floor

Setting : city, tranquil

Capacity : 2 person(s)

Nouméa - South Province - Grande Terre

New Caledonia

Reservation : +687 (0) 748075 (New Caledonia)



Advert No. 1073

www.iha.com



>> VACATION RENTALS

Internet  
Holiday  
Ads



Internet  
Holiday  
Ads



DIRECT BY OWNERS

### Vacation rental



Studio Flat first floor, separate entrance, in (on) a(an) Villa 1 floor

- **Ideal for couples**
- **View :** unobscured, rooftop
- **Setting :** city, tranquil

### Goodies

- **baby equipment :**  
High chair, comfort station, infant tub, baby potty, playpen, stroller

### Surroundings & location



Ocean

#### Leisure

- **Leisure activities less than 12 miles :**

Bathing, pedalo, snorkelling, scuba diving, banana boat, water skiing, jet ski, windsurfing, kite surfing, tennis, squash, pathway/broadwalk, boat trips, rollerblade/rollerskate (circuit)

- **Supervised :**

Sailing school, tennis school

- **Attractions and relaxation :**

Bar/pub, discotheque, restaurant, park and garden

#### Surroundings

- **Locality :**

- Sandy beach 0.3mi.
- Public swimming pool 1.25mi.
- Marina 0.5mi.

- **Amenities :**

- Downtown 1.5mi.
- Bus stop / bus station 0.3mi.
- Car rental 1.85mi.
- Breadstore 0.62mi.
- Supermarket 0.5mi.
- Hairdressing salon 0.5mi.
- Mail office 0.62mi.
- ATM 0.5mi.
- Drugstore 0.3mi.



Kitchen Area



Villa

Advert No. 1073

[www.ihacom.com](http://www.ihacom.com)



>> VACATION RENTALS

Internet  
Holiday  
Ads



Internet  
Holiday  
Ads



DIRECT BY OWNERS



Your hosts

## Interior

- **Receive up to guest(s) :**

2 person(s) - 2 adults

- **Liveable floor area :**

323 Sq.ft.

- **Sleeps - bed(s) :**

1 king-size bed(s)

- **Guest facilities :**

T.V., DVD player, t.v points, internet access, cupboard, radio alarmclock, fully air-conditioned, Glazed in area, Drapes, entry phone system, fire alarm, digipad entry gates

- **Appliances :**

Crockery/flatware, kitchen utensils, electric coffee maker, electric kettle, toaster, gaz stove, mini-oven, micro-wave oven, extractor hood, refridgerator, deep freeze, washing machine, iron, ironing board

## Services

- **washing :**

Sheets (1 X / per week), Towels (1 X / per week), Comforter(s), Comforter(s), Pillows

- **Single family home :**

Serviced supplement, Cleaning on departure supplement

## For your guidance

- **For your guidance**

Kids welcome

Present on site : pets

Non smoking rental, cell phone network coverage

Floor plan

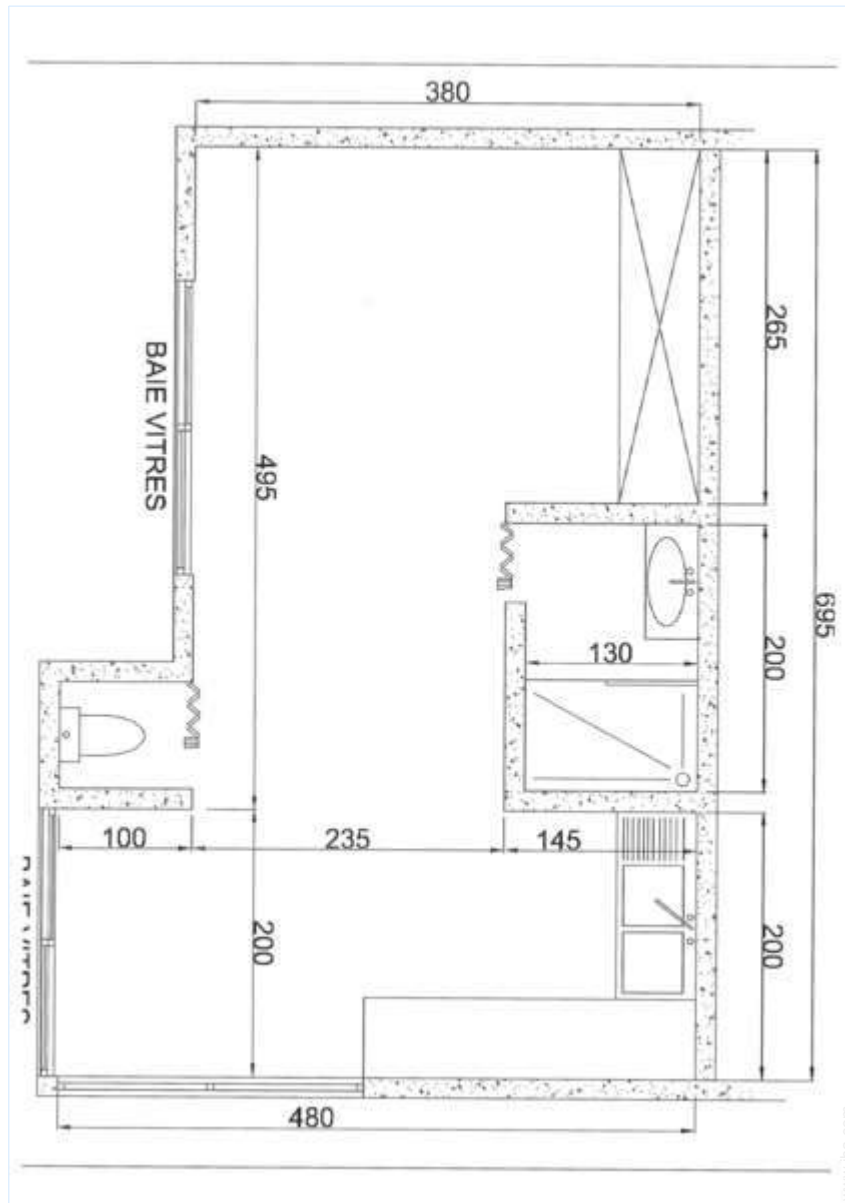


Photo album - 1



Kitchen Area



Villa



Your hosts

Advert No. 1073

[www.iha.com](http://www.iha.com)



>> VACATION RENTALS

Internet  
Holiday  
Ads



Internet  
Holiday  
Ads



DIRECT BY OWNERS

Location & Access



GPS coordinates in degrees, minutes, seconds: Latitude 22° 17'50"S - Longitude 166°26'29"E ([Dwelling](#))

Address


→ 3 rue du Luxembourg  
98800 Nouméa

• [Airport La Tontouta](#)

→ Nouméa, South Province, Grande Terre, New Caledonia  
→ Distance : 31mi.  
→ Time : 45'

• Nouméa : Distance : 0.62mi.

Contact

Last Name	Miss CREUGNET Savina Domaine de la Baie - Alizée
Address	3 rue du Luxembourg
City	98800 NOUMÉA
Country	New Caledonia
Cell phone #	+687 (0) 748075 (New Caledonia)
Fax #	+687 (0) 281587 (New Caledonia)
Spoken languages	 



Vacation rental  
 Nouméa - New Caledonia  
**"Domaine de la Baie - Alizée"**

7  
[Book now](#)

Availability calendar - from : may 2012

May	Tu	W	Th	F	Sa	Su	M	Tu	W	Th	F	Sa	Su	M	Tu	W	Th	F	Sa	Su	M	Tu	W	Th							
2012	1	2	3	4	5	6	7	8	9	10	11	12	13	14	15	16	17	18	19	20	21	22	23	24	25	26	27	28	29	30	31

June	F	Sa	Su	M	Tu	W	Th	F	Sa	Su	M	Tu	W	Th	F	Sa	Su	M	Tu	W	Th	F	Sa							
2012	1	2	3	4	5	6	7	8	9	10	11	12	13	14	15	16	17	18	19	20	21	22	23	24	25	26	27	28	29	30
	-	-	-	-	-	-	-	-	-	-	-	-	-	-	-	-	-	-	-	-	-	-	-	-	-	-	-	-	-	-

Jul	Su	M	Tu	W	Th	F	Sa	Su	M	Tu	W	Th	F	Sa	Su	M	Tu	W	Th	F	Sa	Su	M	Tu							
2012	1	2	3	4	5	6	7	8	9	10	11	12	13	14	15	16	17	18	19	20	21	22	23	24	25	26	27	28	29	30	31
	-	-	-	-	-	-	-	-	-	-	-	-	-	-	-	-	-	-	-	-	-	-	-	-	-	-	-	-	-	-	

Reserved

[Month : Next >>](#)

Rental rates - Studio Flat - 2 Person(s)

Rates	Night	Weekend	week	2 weeks	Month
<input type="checkbox"/> Low season	-	-	\$381 *	-	-
<input type="checkbox"/> Mid season	-	-	\$381 *	-	-
<input type="checkbox"/> High season	-	-	\$381 *	-	-

[Book now](#)





Villa



Your hosts



Kitchen Area



### Booking conditions

#### • Reservation

- Payment made at time of reservation : 30% of rental sum
- Payment balance : on return of keys
- Deposit required : \$1524 \*

#### • Rental

- Service charges included
- Day tax in addition
- Cleaning charge levy on departure

[▶ Book now](#)

[▶ Contact the owner](#)

### Accepted methods of payment

- Bank transfer (wire) • Cash

### Contact directly the property owners

[www.ihacom.com](http://www.ihacom.com)  
Advert No.  
1073  
[>> Book now <<](#)

### Contact

Last Name Miss CREUGNET Savina  
Domaine de la Baie - Alizée  
Address 3 rue du Luxembourg  
City 98800 NOUMÉA  
Country New Caledonia  
Cell phone # +687 (0) 748075 (New Caledonia)  
Fax # +687 (0) 281587 (New Caledonia)

Spoken languages



\* Converted at the rate indicated : €100 = \$127 = £86.8

Advert No. 1073

[www.ihacom.com](http://www.ihacom.com)



Internet  
Holiday  
Ads



Internet  
Holiday  
Ads

