

# Charming vacation rental Cerdanya "Chaletcerdan"



**Charming House**, detached, single storey, seperate entrance, in(on) a(an) Private property

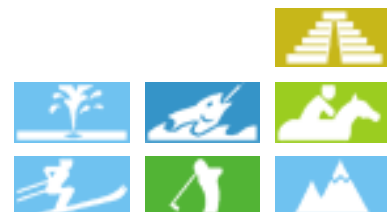
Setting : peaceful, mountainy

Capacity : 6 person(s)

Bedroom(s) : 2

Room(s) : 5

Saillagouse - Eastern Pyrenees (66) - Languedoc Roussillon  
France



Advert No. 65443

[www.iha.com](http://www.iha.com)



Internet  
Holiday  
Ads



Internet  
Holiday  
Ads



### Charming vacation rental



Charming House, detached, single storey, separate entrance, in(on) a(an) Private property

- Ideal for all age groups, couples with baby
- View : panoramic, unobscured, mountain, river, village, nightlights
- Setting : peaceful, mountainy
- Exposure : South-east

### Goodies

- Parking :  
Parking uncovered : 2 off road
- Advantages :  
Ski locker, sauna, SUV vehicle

### Surroundings & location



#### Leisure

- Leisure activities less than 12 miles :

Alpine skiing, cross-country skiing, off-piste skiing, ski-trekking, Télémart skiing, snowboarding, luge (run), ice-skating, skidoo, dogsledding, bathing, pedalo, canoeing, golf, tennis, riding school, pathway/broadwalk, coastal/forest paths, hiking, rappel, rock climbing, mountain bike (path), horse trekking, mini-golf, hunting, big game hunting, acrobatics, fishing, fishing, pétanque field

- Supervised :

Ski school, kids ski area, sailing school, riding school

- Attractions and relaxation :

Bar/pub, restaurant, movie theater, park and garden, zoo/animal park, nature reserve, exhibition center, art gallery, historical site, museum, antiques & bric-a-brac, local craftstore, cellar and wine tasting, natural spring baths, thermal baths, thalassotherapy center, sauna, steam baths, health spa, Bio farm

### Surroundings

- Locality :

- Ski slopes 2.5mi.
- Ski lifts 1.85mi.
- Ice skating rink 4.5mi.
- Heated swimming pool 1.25mi.
- Public swimming pool 4.5mi.
- 18 hole golf course 6mi.
- Windsurfing spots 9mi.
- Watersports centre 9mi.
- River rapids 6mi.
- River <165'
- Stretch of water 660'
- Lake 3mi.
- Forest 0.3mi.
- Mountain range 0.62mi.
- Via ferrata-alpinism 1.25mi.

- Amenities :

- Village center <165'
- Bus stop / bus station 165'
- Ski bus pick up point 165'
- Bike/mountain bike hire 2.5mi.
- Scooter/motorbike hire 2.5mi.
- Car rental 4.5mi.
- Ski hire store 0.62mi.
- Household linens for hire/laundry services 330'
- Breadstore 330'
- Caterer <165'

- Local stores 165'
- Supermarket 165'
- High class retailers 4.5mi.
- Hairdressing salon 330'
- Internet cafe 660'
- Mail office 990'
- Bank 990'
- ATM 660'
- Drugstore <165'
- Doctor 660'
- Nurse 660'
- Hospital 4.5mi.
- Dispensary 660'



sitting room



façade



Charming Mountain Chalet



Equipment at the guest's disposal

### Interior

- **Receive up to guest(s) :**  
6 person(s) - 4 adults, 2 kids
- **Liveable floor area :**  
860 Sq.ft.
- **Interior layout :**  
5 Room(s), 2 bedroom(s), 1 bathroom, 1 shower room, 2 washroom, sitting room 300 Sq.ft., large american style kitchen, dining room, dining area, cosy nook, bar area, patio, veranda
- **Sleeps - bed(s) :**  
1 futon 2 pers, 2 guest folding bed(s) 1 pers, 2 futon 1 pers, 1 possible additional sleeping supplementary
- **Guest facilities :**  
Fireplace, T.V., hi-fi system, vcr, DVD player, board games, book collection, t.v points, cable/satelite, wardrobe, cupboard, hair dryer, heated towel rail, power shower, electric heating, wood-burning stove, Glazed in area, Drapes, Blinds, Double glazed, Rolling shutters
- **Appliances :**  
Crockery/flatware, kitchen utensils, cafetiere, electric coffee maker, electric kettle, toaster, juicer, food processor, fondue set, meat broiler, electric stove, electric hobs, oven, micro-wave oven, electric fries fryer, extractor hood, refridgerator, deep freeze, dish washer, washing machine, vacuum cleaner, iron, ironing board

### Exterior

- **Size of grounds :**  
1,600 Sq.ft.
- **Outside accommodation :**  
Terrace 860 Sq.ft., sundeck 215 Sq.ft., lanai 43 Sq.ft.
- **Outside setting :**  
Private courtyard 860 Sq.ft., enclosed grounds < 1,076 Sq.ft., yard 323 Sq.ft., lawn 215 Sq.ft., woody, river
- **Outside amenities :**  
BBQ, yard table(s), 8 yard seat(s), parasol, yard seated area



sleeping den

### Services

- **washing :**  
Comforter(s), Comforter(s), Pillows
- **Single family home :**  
Serviced supplement (1 X / per week +\$53 \*), Cleaning on departure, Parking
- **Personnel :**  
Staff supplement (+\$53 \*), Chauffeur supplement (+\$114 \*), Guide supplement (+\$114 \*)

### For your guidance

- **For your guidance**  
Kids welcome  
No pet allowed  
Cell phone network coverage, personal transport advisable  
Water : hot/cold  
Local voltage supply : 220-240V / 50Hz  
Electricity supply : mains
- **Handicapped people welcome**  
Wheelchair access  
Fitted out for the disabled : mobility



Equipment at the guest's disposal

Floor plan



Advert No. 65443

[www.ihacom.com](http://www.ihacom.com)



>> VACATION RENTALS

Internet  
Holiday  
Ads



Internet  
Holiday  
Ads



DIRECT BY OWNERS

Photo album - 1



façade



sitting room



Charming Mountain Chalet



Equipment at the guest's disposal



Equipment at the guest's disposal

Photo album - 2



sleeping den



overall view



furniture



futon 2 pers



futon 1 pers



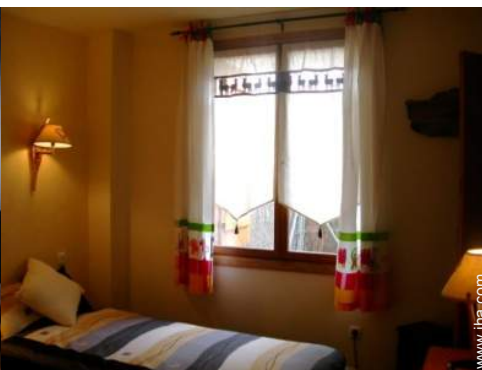
Equipment at the guest's disposal



furnishings



the decor



Guest facilities and furnishings



dining room

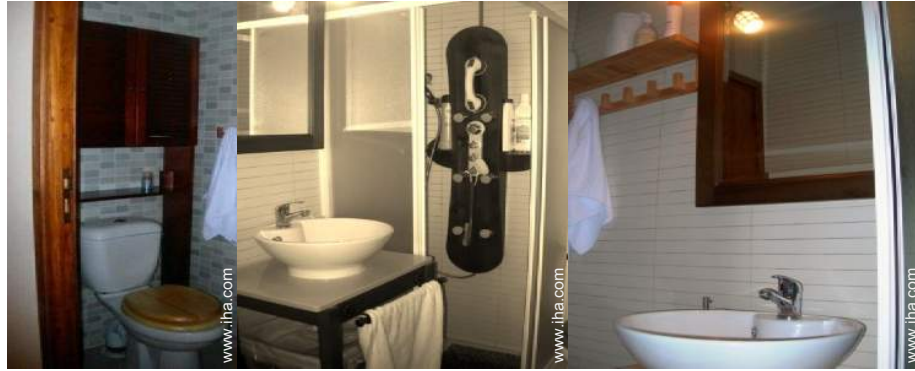


large american style kitchen



Guest facilities and furnishings

Photo album - 3



shower room

bathroom

bathroom



bathroom

large american style kitchen

large american style kitchen



bar area

Interior layout

the decor

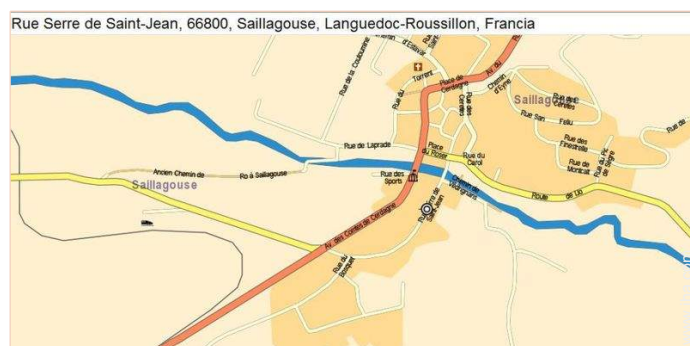
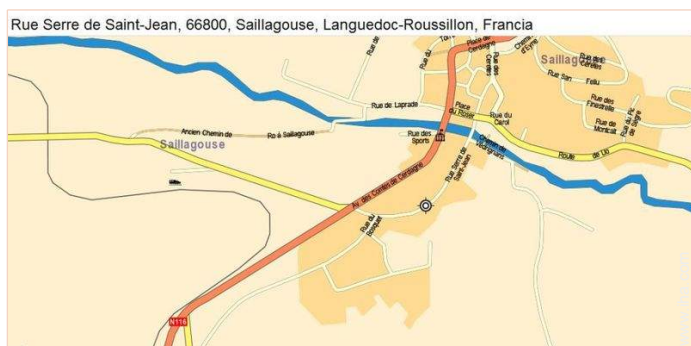
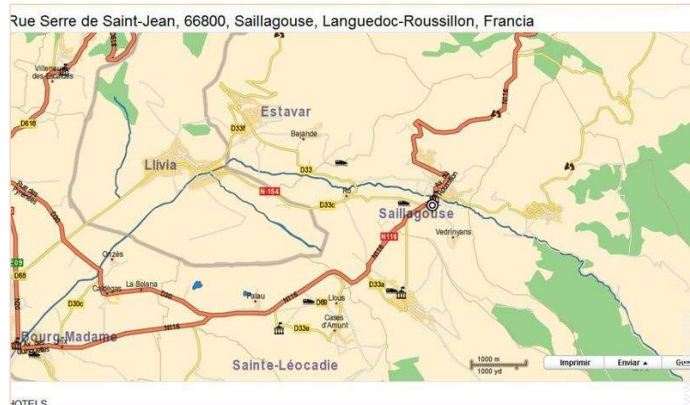


Sleeps - bed(s)

Sleeps - bed(s)

sitting room

Route map



Location & Access



GPS coordinates in degrees, minutes, seconds: Latitude 42°27'24.57"N - Longitude 2°2'18.88"E ([Dwelling](#))

Address

→ 12 rue Serre Saint Jean  
66800 Saillagouse

● **Railroad station Puigcerdà**

→ Puigcerdà, Girona Province, Catalonia, Spain

→ Distance : 6mi.

→ Time : 10'

● **Railroad station Saillagouse**

→ Saillagouse, Eastern Pyrenees, Languedoc Roussillon, France

→ Distance : 0.93mi.

→ Time : 5'

● **Freeway (exit) A9**

→ Perpignan, Eastern Pyrenees, Languedoc Roussillon, France

→ Distance : 56mi.

→ Time : 1h30'

- Puigcerdà : Distance : 4.5mi.
- Bourg Madame : Distance : 4.5mi.
- Latour de Carol : Distance : 10mi.

Contact

Last Name	Mrs. Mr. PEREZ CABALLERO José Miguel
Address	12, rue Serre Saint Jean
City	66800 SAILLAGOUSE
Country	France
Cell phone #	+34 639739232 (Spain)
Cell phone2 #	+33 (0) 601770726 (France)

Spoken languages



Charming vacation rental  
Eastern Pyrenees - Languedoc Roussillon  
"Chaletcerdan"

9

[Book now](#)

Availability calendar - from : may 2012

May	Tu	W	Th	F	Sa	Su	M	Tu	W	Th	F	Sa	Su	M	Tu	W	Th	F	Sa	Su	M	Tu	W	Th	F	Sa	Su	M	Tu	W	Th
2012	1	2	3	4	5	6	7	8	9	10	11	12	13	14	15	16	17	18	19	20	21	22	23	24	25	26	27	28	29	30	31
																								-	-	-	-	-	-	-	-

June	F	Sa	Su	M	Tu	W	Th	F	Sa	Su	M	Tu	W	Th	F	Sa	Su	M	Tu	W	Th	F	Sa							
2012	1	2	3	4	5	6	7	8	9	10	11	12	13	14	15	16	17	18	19	20	21	22	23	24	25	26	27	28	29	30
	-	-	-	-	-	-	-	-	-	-	-	-	-	-	-	-	-	-	-	-	-	-	-	-	-	-	-	-	-	-

Jul	Su	M	Tu	W	Th	F	Sa	Su	M	Tu	W	Th	F	Sa	Su	M	Tu	W	Th	F	Sa	Su	M	Tu							
2012	1	2	3	4	5	6	7	8	9	10	11	12	13	14	15	16	17	18	19	20	21	22	23	24	25	26	27	28	29	30	31
	-	-	-	-	-	-	-	-	-	-	-	-	-	-	-	-	-	-	-	-	-	-	-	-	-	-	-	-	-	-	

Mid season  Reserved

[Month : Next >>](#)

Rental rates - Charming House - 6 Person(s)

Rates	Night	Weekend	week	2 weeks	Month
<span style="background-color: #ADD8E6; border: 1px solid black; display: inline-block; width: 15px; height: 10px; margin-right: 5px;"></span> Mid season	-	-	\$533 * (Saturday)	-	-
<span style="background-color: #DC143C; border: 1px solid black; display: inline-block; width: 15px; height: 10px; margin-right: 5px;"></span> High season	-	-	\$667 * (Saturday)	\$1200 * (Saturday)	-
<span style="background-color: #DDA0DD; border: 1px solid black; display: inline-block; width: 15px; height: 10px; margin-right: 5px;"></span> Festive specials	-	-	\$724 * (Saturday)	\$1303 * (Saturday)	-
<span style="background-color: #FFD700; border: 1px solid black; display: inline-block; width: 15px; height: 10px; margin-right: 5px;"></span> Promotional period	-	-	\$451 * (Saturday)	-	-

(Check-in day)

[Book now](#)

Advert No. 65443

www.iha.com



Internet  
Holiday  
Ads



Internet  
Holiday  
Ads





Charming Mountain Chalet



Equipment at the guest's disposal



Equipment at the guest's disposal



façade



sitting room

### Booking conditions

#### • Reservation

- Payment made at time of reservation : 50% of rental sum
- Payment balance : on return of keys
- Deposit required : \$381 \*

#### • Rental

- Service charges included
- Day tax included
- Cleaning charge levy on departure : \$53 \*
- Anticipated supplement for :
  - supplementary bed(s)
  - hammam, sauna
  - firewood

### Accepted methods of payment

- International Money Order • Bank

- transfer (wire) • Check • Draft • PayPal • Cash • Holiday coupon

[▶ Book now](#)

[▶ Contact the owner](#)

Contact directly the property owners

[www.ihacom.com](http://www.ihacom.com)

Advert No.

65443

[>> Book now <<](#)

### Contact

Last Name Mrs. Mr. PEREZ CABALLERO José Miguel  
 Address 12, rue Serre Saint Jean  
 City 66800 SAILLAGOUSE  
 Country France  
 Cell phone # +34 639739232 (Spain)  
 Cell phone2 # +33 (0) 601770726 (France)

Spoken languages



\* Converted at the rate indicated : €100 = \$127 = £86.8

Advert No. 65443

[www.ihacom.com](http://www.ihacom.com)



Internet  
Holiday  
Ads



Internet  
Holiday  
Ads

