

Charming vacation rental Mediterranean Sea "Appart Meublé Welcome"



Charming Apartment 5nd floor,
shared entrance, in(on) a(an) Restored
apartment house/building 4 floors

Setting : historical, cultural

Capacity : **4 person(s)**

Bedroom(s) : **1**

Room(s) : **2**

Montpellier - Hérault (34) - Languedoc Roussillon

France

Reservation : +33 (0) 4 67 63 07 58 (France)



Advert No. 52013

www.ihacom.com



Internet
Holiday
Ads



Internet
Holiday
Ads



Charming vacation rental

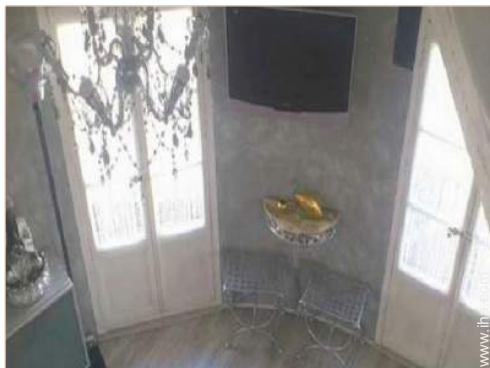


Charming Apartment 5nd floor, shared entrance, in(on) a(an) Restored apartment house/building 4 floors

- **Ideal for couples, singles**
- **View :** panoramic, village, rooftop, square, monument, pedestrianized street
- **Setting :** historical, cultural
- **Exposure :** North-west

Goodies

- **Advantages :**
Piano



Interior layout

Surroundings & location



City

Leisure

- **Leisure activities less than 12 miles :**

Bathing, pedalo, kite surfing, golf, riding school, pony club, horse trekking, mini-golf, fishing, fishing

- **Attractions and relaxation :**

Bar/pub, discotheque, restaurant, movie theater, park and garden, zoo/animal park, nature reserve, exhibition center, art gallery, historical site, museum, theater, opera house, festivals, antiques & bric-a-brac, local craftstore, cellar and wine tasting, casino, thermal baths, sauna

Surroundings

- **Locality :**

- Sandy beach 9mi.
- Nudist beach 12.5mi.
- 18 hole golf course 12.5mi.
- Marina 12.5mi.

- **Amenities :**

- Downtown
- Bus stop / bus station
- Breadstore
- Local stores
- High class retailers
- Hairdressing salon
- Internet cafe
- Mail office
- Bank
- ATM
- Drugstore
- Doctor
- Hospital



american style kitchen



General



the apartment

Exterior

- **Outside accommodation :**
Roof terrace, balcony
- **Outside amenities :**
Summer living area, yard table(s), yard seat (s)



Interior layout

Interior

- **Receive up to guest(s) :**
4 person(s) - 4 adults
- **Liveable floor area :**
485 Sq.ft.
- **Interior layout :**
2 Room(s), 1 bedroom(s), 1 shower room, 1 washroom, sitting room, american style kitchen, dining area, walk-in closet
- **Sleeps - bed(s) :**
1 full bed(s), 1 futon 2 pers
- **Guest facilities :**
T.V., cable/satelite, high speed internet access, wifi (wireless internet access), cupboard, Hanging wardrobe, hair dryer, heated towel rail, fully air-conditioned, central heating, Glazed in area, Drapes, Blinds, entry phone system
- **Appliances :**
Crockery/flatware, kitchen utensils, cafetiere, electric kettle, toaster, electric hobs, oven, micro-wave oven, extractor hood, refridgerator, deep freeze, washing machine, clothes dryer, vacuum cleaner, iron, ironing board

Services

- **washing :**
Sheets (1 X / per week), Towels (1 X / per week), Linen (1 X / per week), Comforter(s), Pillows
- **Single family home :**
Cleaning on departure supplement (+\$44 *)

For your guidance

- **For your guidance**
Cell phone network coverage
Water : cold high pressure
Local voltage supply : 220-240V / 50Hz
Electricity supply : mains



interior

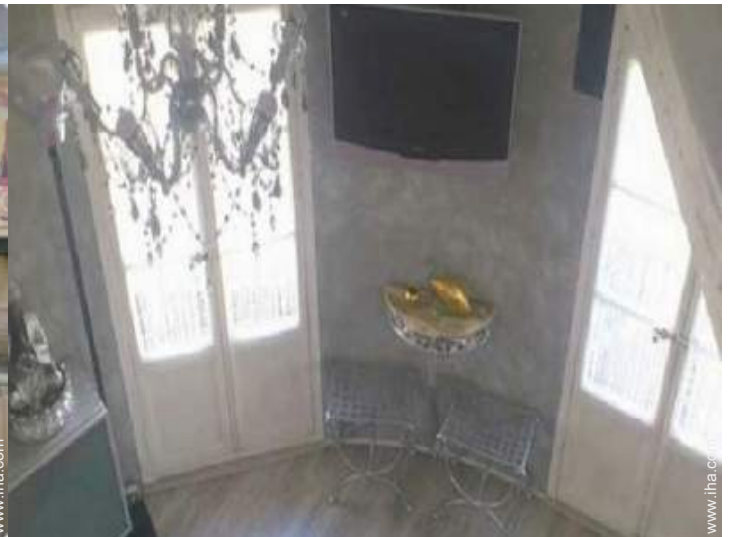
Photo album - 1



General



american style kitchen



Interior layout



the apartment



interior

Photo album - 2



Interior layout



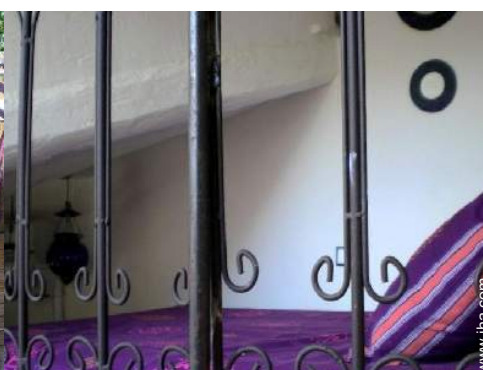
roof terrace



roof terrace



roof terrace



full bed(s)



façade



Kitchen Area



Goodies



Interior layout



view from the roof terrace



view from the sitting-room

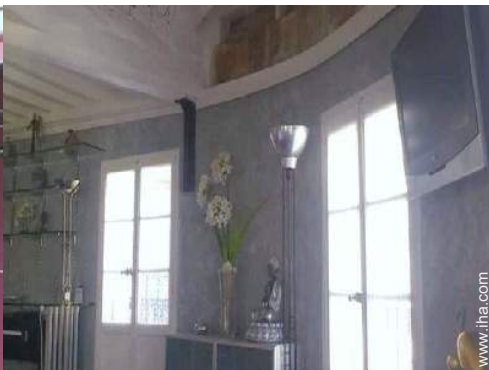


Outside amenities

Photo album - 3



Interior layout



General



shower room



shower room



sitting room



dining area



General



washroom



Kitchen Area



Interior layout



sleeping den



shower room

Route map



Location & Access



GPS coordinates in degrees, minutes, seconds: Latitude 43° 36'41.4"N - Longitude 3°52'34.32"E ([City](#))

Address

→ 1 rue du Cherche Midi
34000 Montpellier

• Airport Montpellier Méditerranée

→ Montpellier, Hérault, Languedoc Roussillon, France
→ Distance : 6mi.
→ Time : 15'

• Railroad station Montpellier Saint Roch

→ Montpellier, Hérault, Languedoc Roussillon, France
→ Distance : 0.5mi.
→ Time : 10'

- La Grande Motte : Distance : 12.5mi.
- Nîmes : Distance : 31mi.
- Sète : Distance : 22,5mi.

Contact

Last Name	Mr. YANETTI Gilles
Address	1 rue du Cherche Midi
City	34000 MONTPELLIER
Country	France
Phone #	+33 (0) 4 67 63 07 58 (France)
Cell phone #	+33 (0) 6 61 19 40 61 (France)

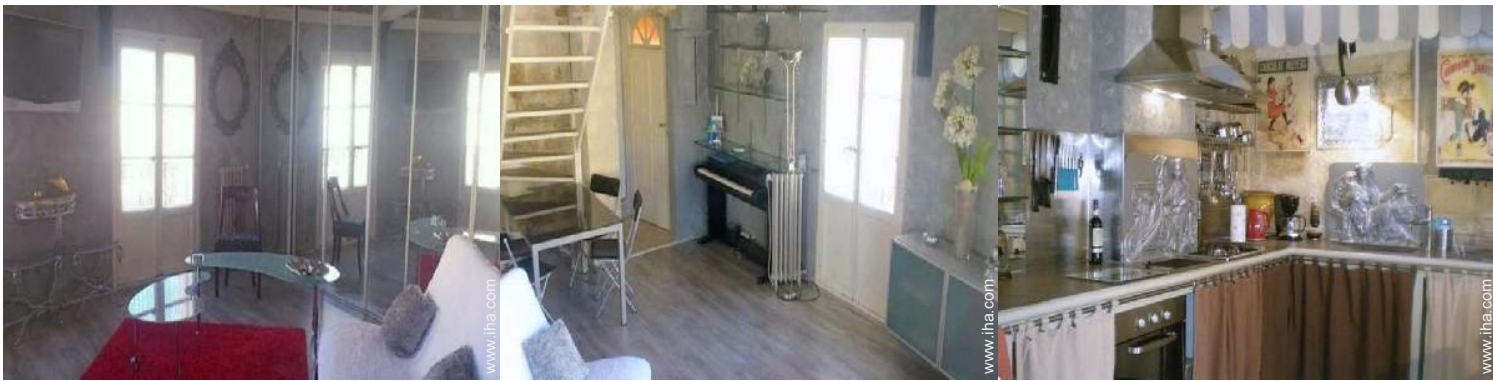
Spoken languages  

Rental rates - Charming Apartment - 4 Person(s)

Rates	Night	Weekend	week	2 weeks	Month
■ Low season	\$126 * ↓ > 2	\$339 * (Friday)	\$756 *	\$1334 *	-
■ High season	\$126 * ↓ > 2	\$339 * (Friday)	\$756 * (Saturday)	\$1334 * (Saturday)	-

↓ Reducing rates (Check-in day) > Minimum Night

[Book now](#)



General

american style kitchen

Booking conditions

• **Reservation**

→ Payment made at time of reservation : 25% of rental sum
→ Payment balance : on return of keys

• **Rental**

→ Service charges included
→ Day tax included
→ Cleaning charge levy on departure : \$44 *
→ Anticipated supplement for :
- supplementary bed(s)

[▶ Book now](#)

[▶ Contact the owner](#)

Contact directly the property owners

www.ihacom

Advert No.

52013

>> [Book now](#) <<

Contact

Last Name Mr. YANETTI Gilles
Address 1 rue du Cherche Midi
City 34000 MONTPELLIER
Country France
Phone # +33 (0) 4 67 63 07 58 (France)
Cell phone # +33 (0) 6 61 19 40 61 (France)

Spoken languages  

Accepted methods of payment

• International Money Order • Cash

* Converted at the rate indicated : €100 = \$127 = £86.8

Advert No. 52013

www.ihacom



Internet
Holiday
Ads



Internet
Holiday
Ads

