

Gîte - Self Catering Gueret area "Gîte des Naiades"



Gîte - Self Catering - Luxury Stone-Built House, detached, 2 floors, separate entrance, in(on) a(an) Hamlet

Setting : quiet, natural

Capacity : 10 person(s)
Bedroom(s) : 5
Room(s) : 10



Gîtes de France (4 ears)



Theme breaks
Nature discovery
Back to health

Glénic - Creuse (23) - Limousin

France

Reservation : +33 (0) 5 55 51 21 31 (France)

Advert No. 49902

www.iha.com



>> VACATION RENTALS

Internet
Holiday
Ads



Internet
Holiday
Ads



DIRECT BY OWNERS

Gîte - Self Catering



Gîte - Self Catering - Luxury Stone-Built House, detached, 2 floors, separate entrance, in(on) a(an) Hamlet

- **Ideal for large families, couples with baby**
- **View :** panoramic, unobscured, not overlooked, swimming pool, garden/park, nightlights
- **Setting :** quiet, natural
- **Exposure :** South

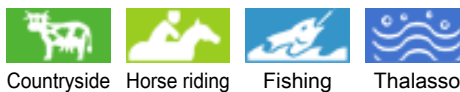
Goodies

- **Swimming pool :**
Shared swimming pool, rectangular (length 33', width 16'), heated, illuminated, steps in, outside shower, pool house (open from 'june 01' till 'september 01')
- **Parking :**
Covered parking : 1 individual stall locked
Parking uncovered : 4 off road
- **Advantages :**
Sauna, steam bath, jacuzzi
- **baby equipment :**
High chair, comfort station, infant tub, playpen



Spring

Surroundings & location



Countryside Horse riding Fishing Thalasso

Leisure

- **Leisure activities less than 12 miles :**
Bathing, windsurfing, canoeing, rafting, riding school, pathway/broadwalk, coastal/forest paths, hiking, mountain bike (path), horse trekking, skate board (ramps), hunting, acrobatics, fishing, pétanque field
- **Supervised :**
Sailing school, dive school, riding school
- **Attractions and relaxation :**
Bar/pub, discotheque, restaurant, movie theater, park and garden, leisure park, zoo/animal park, nature reserve, exhibition center, art gallery, historical site, museum, summer theater, festivals, antiques & bric-a-brac, local craftstore, thalassotherapy center, sauna, steam baths, health spa, Bio farm

Surroundings

- **Locality :**
 - Sandy beach 4.5mi.
 - Public swimming pool 9mi.
 - Public tennis court 9mi.
 - 9 hole golf course 15.5mi.
 - River 3mi.
 - Stretch of water 4.5mi.
 - Lake 4.5mi.
 - Forest 0.3mi.
- **Amenities :**
 - Downtown 9mi.
 - Bike/mountain bike hire 9mi.
 - Car rental 9mi.
 - Breadstore 3mi.
 - Caterer 3mi.
 - Local stores 3mi.
 - Supermarket 9mi.
 - Internet cafe 9mi.
 - Mail office 9mi.
 - Bank 9mi.
 - ATM 9mi.
 - Drugstore 3mi.
 - Doctor 3mi.
 - Nurse 2.5mi.
 - Hospital 9mi.



jacuzzi





sitting room

Interior

- **Receive up to guest(s) :**
10 person(s) - 8 adults, 2 kids
- **Liveable floor area :**
1,940 Sq.ft.
- **Interior layout :**
10 Room(s), 5 bedroom(s), 1 bathroom, 3 shower room, 4 washroom, sitting room 323 Sq.ft., large american style kitchen, dining area, cosy nook, mezzanine, tv den, reading room, walk-in closet, laundry room
- **Sleeps - bed(s) :**
2 full bed(s), 6 twin bed(s)
- **Guest facilities :**
Fireplace, T.V., DVD player, board games, book collection, phone, wifi (wireless internet access), wardrobe, cupboard, Hanging wardrobe, hair dryer, central heating, Glazed in area, Drapes, Blinds, Double glazed, Rolling shutters
- **Appliances :**
Crockery/flatware, kitchen utensils, cafetiere, electric coffee maker, electric kettle, toaster, juicer, food processor, pancake maker, electric raclette set, fondue set, electric hobs, oven, micro-wave oven, extractor hood, refridgerator, deep freeze, ice maker, dish washer, washing machine, clothes dryer, vacuum cleaner, iron, ironing board

Exterior

- **Size of grounds :**
0.25 acre.
- **Outside accommodation :**
Terrace 650 Sq.ft.
- **Outside setting :**
Enclosed grounds 4,300 Sq.ft., landscaped yard 2,150 Sq.ft., lawn 530 Sq.ft., woody 7.5 acres, orchard 1,076 Sq.ft., kitchen garden 5,400 Sq.ft., creek
- **Outside amenities :**
Summer living area, BBQ, yard table(s), 8 yard seat(s), parasol, 2 sun recliner(s)



kitchen

Services

- **washing :**
Sheets, Towels, Linen, Comforter(s), Pillows
- **Single family home :**
Cleaning on departure supplement (+ \$102 *), Yard/swimming pool maintenance, Parking

For your guidance

- **For your guidance**
Kids welcome
Pets friendly
Cell phone network coverage, personal transport advisable
Water : hot/cold
Local voltage supply : 220-240V / 50Hz
Electricity supply : mains



View from the property

Photo album - 1



jacuzzi

Spring



sitting room

View from the property

Photo album - 2



kitchen



pool view



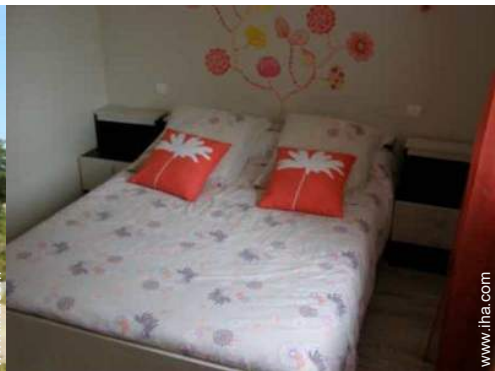
river



pathway/broadwalk



Autumn



bedroom



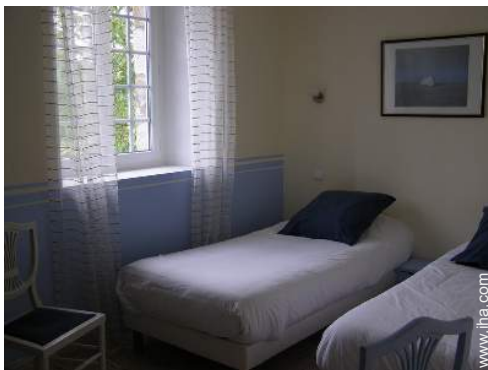
infants bedroom



master bedroom



bedroom



bedroom

Photo album - 3



reading room



mezzanine



bathroom



south-westerly view



view from the garden/park



southerly view



mountain bike (path)



hiking



creek



Rectangular swimming pool

Theme breaks

Nature discovery



Indicated duration : 2 hours
Level : Initiation

Included in the price of the accommodation

Fall, spring, On request (groups)

Back to health

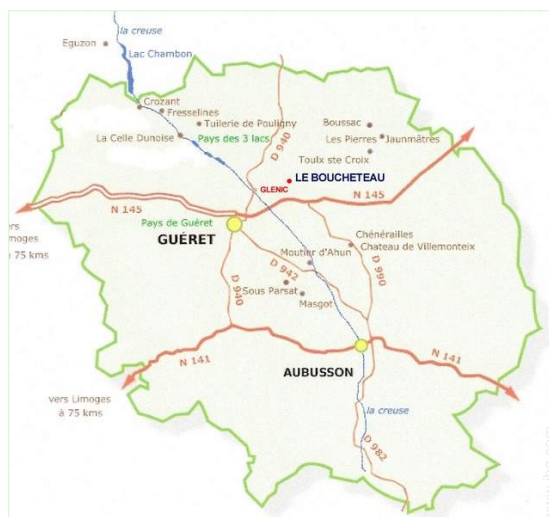


Participant(s) : 2 min - 10 max
Level : Initiation

Included in the price of the accommodation for 8 person(s)

All year

Route map



Location & Access



GPS coordinates in degrees, minutes, seconds: Latitude 46° 13'55"N - Longitude 1°54'29"E ([Dwelling](#))

Address

→ 2 Boucheteau
23380 Glénic

• Freeway (exit) N145

→ Guéret, Creuse, Limousin, France
→ Distance : 9mi.
→ Time : 20'

• Railroad station Guéret

→ Guéret, Creuse, Limousin, France
→ Distance : 9mi.
→ Time : 20'

• Airport Limoges Bellegarde

→ Limoges, Upper Vienne, Limousin, France
→ Distance : 59mi.
→ Time : 1h

- Guéret : Distance : 9mi.
- Aubusson : Distance : 18.5mi.
- Limoges : Distance : 59mi.

Contact

Last Name	Mrs. Mr. GOUNY Liliane & Georges
Address	2 Le Boucheteau
City	23380 GLENIC
Country	France
Phone #	+33 (0) 5 55 51 21 31 (France) From 09:00 AM to 10:00 PM
Cell phone #	+33 (0) 6 83 03 14 44 (France)
Spoken languages	



Gîte - Self Catering
Creuse - Limousin
"Gîte des Naïades"

[Book now](#)

Availability calendar - from : may 2012

May	Tu	W	Th	F	Sa	Su	M	Tu	W	Th	F	Sa	Su	M	Tu	W	Th	F	Sa	Su	M	Tu	W	Th	F	Sa	Su	M	Tu	W	Th	
2012	1	2	3	4	5	6	7	8	9	10	11	12	13	14	15	16	17	18	19	20	21	22	23	24	25	26	27	28	29	30	31	

June	F	Sa	Su	M	Tu	W	Th	F	Sa	Su	M	Tu	W	Th	F	Sa	Su	M	Tu	W	Th	F	Sa							
2012	1	2	3	4	5	6	7	8	9	10	11	12	13	14	15	16	17	18	19	20	21	22	23	24	25	26	27	28	29	30
	-	-	-	-	-	-	-	-	-	-	-	-	-	-	-	-	-	-	-	-	-	-	-	-	-	-	-	-	-	-

Jul	Su	M	Tu	W	Th	F	Sa	Su	M	Tu	W	Th	F	Sa	Su	M	Tu	W	Th	F	Sa	Su	M	Tu							
2012	1	2	3	4	5	6	7	8	9	10	11	12	13	14	15	16	17	18	19	20	21	22	23	24	25	26	27	28	29	30	31
	-	-	-	-	-	-	-	-	-	-	-	-	-	-	-	-	-	-	-	-	-	-	-	-	-	-	-	-	-	-	

Reserved
 Mid season
 High season

[Month : Next >>](#)

Rental rates - Gîte - Self Catering - Luxury Stone-Built House - 10 Person(s)

Rates	Night	Weekend	week	2 weeks	Month
■ Low season	-	\$762 *	\$1397 * <i>(Saturday)</i>	-	-
■ Mid season	-	\$762 *	\$1461 * <i>(Saturday)</i>	-	-
■ High season	-	-	\$1588 * <i>(Saturday)</i>	-	-
■ Festive specials	-	-	\$1588 *	-	-

(Check-in day)

[Book now](#)





Spring



sitting room



View from the property



jacuzzi

Booking conditions

• Reservation

- Payment made at time of reservation : 25% of rental sum
- Payment balance : on return of keys
- Deposit required : \$635 *

• Rental

- Service charges included
- Day tax in addition
- Cleaning charge levy on departure : \$102 *

[▶ Book now](#)

[▶ Contact the owner](#)

Accepted methods of payment

- Check • Holiday coupon

Contact directly the property owners

www.ihacom.com
Advert No.
49902
[>> Book now <<](#)

Contact

Last Name	Mrs. Mr. GOUNY Liliane & Georges
Address	2 Le Boucheteau
City	23380 GLENIC
Country	France
Phone #	+33 (0) 5 55 51 21 31 (France) From 09:00 AM to 10:00 PM
Cell phone #	+33 (0) 6 83 03 14 44 (France)

Spoken languages



* Converted at the rate indicated : €100 = \$127 = £86.8

Advert No. 49902

www.ihacom.com



>> VACATION RENTALS

Internet
Holiday
Ads



Internet
Holiday
Ads



DIRECT BY OWNERS