

Vacation rental Lisbon Coast "Beco da Boavista"



Apartment-Flat 6nd floor, shared entrance, in(on) a(an) Apartment house/building 5 floors

Setting : historical, urban

Capacity : 6 person(s)

Bedroom(s) : 2

Room(s) : 3

Lisbon - Lisbon District - Lisbon and Tagus Valley
Portugal

Advert No. 52785

www.iha.com



Internet
Holiday
Ads



Internet
Holiday
Ads



Vacation rental



Apartment-Flat 6nd floor, shared entrance, in(on) a(an) Apartment house/building 5 floors

- **Ideal for all age groups, group**
- **View** : panoramic, unobscured, not overlooked, river, city, fantastic sunset
- **Setting** : historical, urban
- **Exposure** : South

Surroundings & location



City



Culture

Leisure

• Attractions and relaxation :

Bar/pub, discotheque, restaurant, movie theater, park and garden, exhibition center, art gallery, historical site, museum, opera house

Surroundings

• Locality :

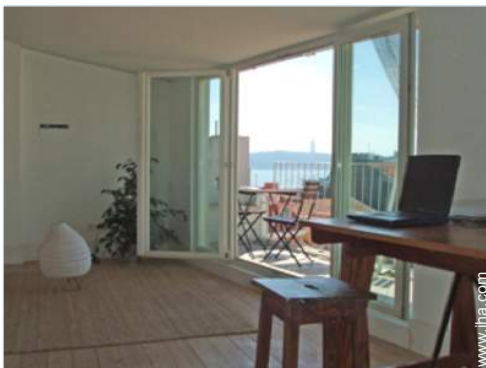
- Sea/ocean 6mi.
- Sandy beach 6mi.
- Nudist beach 9mi.
- Windsurfing spots 6mi.
- Surfing spots 6mi.
- River 330'

• Amenities :

- Downtown <165'
- Bus stop / bus station <165'
- Subway station 165'
- Streetcar system 165'
- Bus pick up point beach
- Scooter/motorbike hire 660'
- Breadstore <165'
- Local stores <165'
- Supermarket 165'
- Hairdressing salon 165'
- Mail office <165'
- Bank <165'
- ATM
- Drugstore 165'



living room



living room



living room

Advert No. 52785

www.iha.com



>> VACATION RENTALS

Internet
Holiday
Ads



Internet
Holiday
Ads



DIRECT BY OWNERS



living room

Interior

- **Receive up to guest(s) :**

6 person(s) - 5 adults, 1 kids

- **Interior layout :**

3 Room(s), 2 bedroom(s), 1 bathroom, 1 washroom, living room, large american style kitchen, veranda

- **Sleeps - bed(s) :**

1 full bed(s), 2 futon 2 pers, 1 baby cradle

- **Guest facilities :**

Hi-fi system, book collection, internet access, high speed internet access, wifi (wireless internet access), cupboard, Hanging wardrobe, central heating, skylights, Drapes, Double glazed

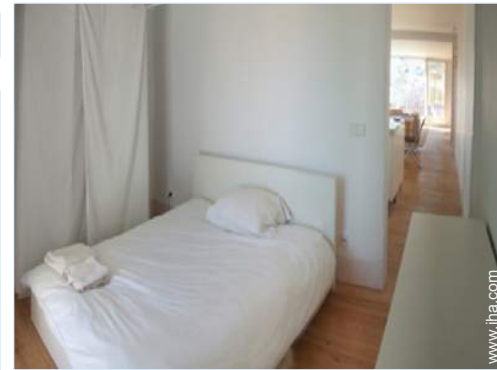
- **Appliances :**

Crockery/flatware, kitchen utensils, cafetiere, electric coffee maker, electric espresso coffee maker, electric kettle, toaster, juicer, gaz stove, oven, micro-wave oven, extractor hood, refridgerator, deep freeze, washing machine, vacuum cleaner, iron, ironing board

Exterior

- **Outside accommodation :**

Terrace



master bedroom

Services

- **washing :**

Sheets, Towels, Linen, Comforter(s), Comforter(s), Pillows

- **Single family home :**

Cleaning on departure

For your guidance

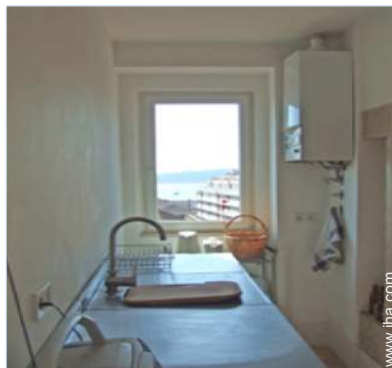
- **For your guidance**

Kids welcome

Pets friendly

Local voltage supply : 220V / 60Hz

Electricity supply : mains



kitchenette

Advert No. 52785

www.ihacom.com



Internet
Holiday
Ads



Internet
Holiday
Ads



Floor plan



Photo album - 1



living room



living room



living room



living room

Advert No. 52785

www.ihacom.com



Internet
Holiday
Ads



Internet
Holiday
Ads



DIRECT BY OWNERS

Photo album - 2



kitchenette



master bedroom



washroom

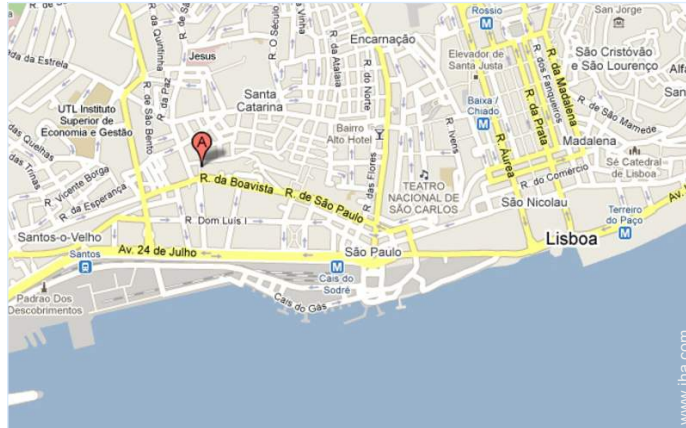


bedroom



bedroom

Route map



Location & Access



GPS coordinates in degrees, minutes, seconds: Latitude 38° 43'32.052"N - Longitude 9°9'1.512"W (City)

Address

→ Lisboa
1000 Lisbon

• [Railroad station Lisboa Santa Apolónia](#)

→ Lisbon, Lisbon District, Lisbon and Tagus Valley, Portugal
→ Distance : 0.62mi.
→ Time : 15'

• [Airport Lisbon Portela](#)

→ Lisbon, Lisbon District, Lisbon and Tagus Valley, Portugal
→ Distance : 1.25mi.
→ Time : 30'

• Lisbon : Distance : 65'

Contact

Last Name Mr. ROGADO Pedro
 Rogrent
City 1200 LISBOA
Country Portugal
Cell phone # +351 964 562 962 (Portugal)

Spoken languages



Rental rates - Apartment-Flat - 6 Person(s)

Rates	Night	Weekend	week	2 weeks	Month
 Low season	\$121 * > 4	-	\$695 *	-	\$1836 *
 High season	\$165 * > 4	-	\$845 *	-	\$2483 *
 Promotional period	-	-	-	-	\$1765 *

> Minimum Night

[Book now](#)



living room

living room

Booking conditions

• **Reservation**

- Payment made at time of reservation : 30% of rental sum
- Payment balance : on return of keys
- Deposit required : \$508 *

• **Rental**

- Service charges included
- Day tax included
- Cleaning charge on departure included
- Anticipated supplement for : - supplementary bed(s)

Accepted methods of payment

- Draft • PayPal • Cash

[▶ Book now](#)

[▶ Contact the owner](#)

Contact directly the property owners

www.iha.com
Advert No.
52785
[>> Book now <<](#)

Contact

Last Name Mr. ROGADO Pedro Rogrent
City 1200 LISBOA
Country Portugal
Cell phone # +351 964 562 962 (Portugal)

Spoken languages



* Converted at the rate indicated : €100 = \$127 = £86.8

Advert No. 52785

www.iha.com



Internet
Holiday
Ads



Internet
Holiday
Ads

