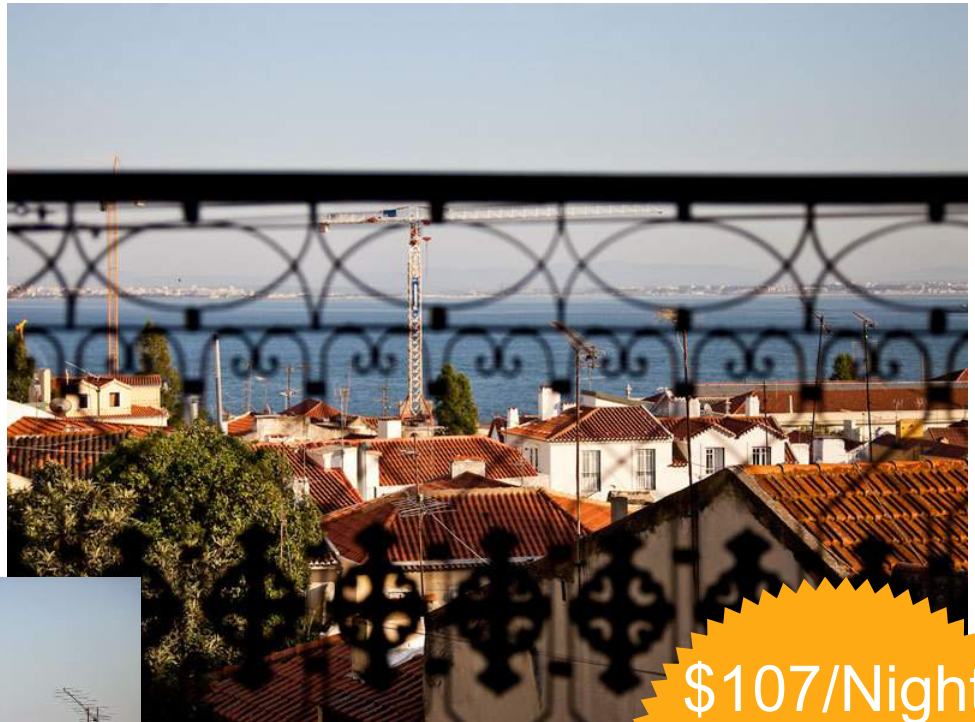


# Vacation rental Lisbon Coast "Casa d'Alfama"



**\$107/Night**  
**Promotions**

from 07/01/12  
to 07/31/12  
2 person(s)

**Apartment-Flat** first floor, separate entrance, in(on) a(an) Restored apartment house/building 3 floors

Setting : historical, tranquil

Capacity : 4 person(s)

Bedroom(s) : 2

Room(s) : 3

Lisbon - Lisbon District - Lisbon and Tagus Valley  
Portugal

Advert No. 51285

[www.iha.com](http://www.iha.com)



Internet  
Holiday  
Ads



Internet  
Holiday  
Ads



### Vacation rental



Apartment-Flat first floor, separate entrance, in/on a(an) Restored apartment house/building 3 floors

- **Ideal for family, senior(s)**
- **View :** panoramic, unobscured, river, harbour, city, rooftop
- **Setting :** historical, tranquil
- **Exposure :** South-east

### Goodies

- **baby equipment :**  
High chair, infant tub, baby potty

### Surroundings & location



City



Culture

#### Leisure

- **Leisure activities less than 12 miles :**

Bathing, sailing, golf, tennis, boat trips, fishing

- **Attractions and relaxation :**

Bar/pub, discotheque, restaurant, movie theater, karaoke, park and garden, zoo/ animal park, sea world, nature reserve, exhibition center, art gallery, historical site, museum, theater, opera house, festivals, antiques & bric-a-brac, local craftstore, cellar and wine tasting, casino

#### Surroundings

- **Locality :**

- Sandy beach 12.5mi.
- Nudist beach 18.5mi.
- Public swimming pool 0.3mi.
- 9 hole golf course 6mi.
- 18 hole golf course 15.5mi.
- River 0.3mi.
- Marina 3mi.

- **Amenities :**

- Downtown <165'
- Bus stop / bus station 990'
- Subway station 0.3mi.
- Streetcar system 330'
- Bus pick up point beach 2.5mi.
- Breadstore 330'
- Local stores 330'
- Supermarket 0.3mi.
- Mail office 0.5mi.
- Drugstore 990'



view from the balcony



dining room



view from the balcony

Advert No. 51285

[www.iha.com](http://www.iha.com)



>> VACATION RENTALS

Internet  
Holiday  
Ads



Internet  
Holiday  
Ads



DIRECT BY OWNERS



dining room

### Interior

- **Receive up to guest(s) :**

4 person(s) - 4 adults

- **Liveable floor area :**

860 Sq.ft.

- **Interior layout :**

3 Room(s), 2 bedroom(s), 1 bathroom, living room 100 Sq.ft., sitting room 215 Sq.ft., seperate kitchen, dining room, veranda

- **Sleeps - bed(s) :**

1 full bed(s), 1 futon 2 pers, 1 sleeper sofa (s) 2 pers, 1 sleeper sofa(s) 1 pers, 1 baby cradle

- **Guest facilities :**

T.V., hi-fi system, DVD player, board games, book collection, movie collection, cable/satelite, high speed internet access, wifi (wireless internet access), Hanging wardrobe, hair dryer, mobile cool air fan, electric heating

- **Appliances :**

Crockery/flatware, kitchen utensils, electric coffee maker, electric kettle, toaster, juicer, gaz stove, electric hobs, oven, micro-wave oven, extractor hood, refridgerator, deep freeze, dish washer, washing machine, vacuum cleaner, iron, ironing board

### Exterior

- **Outside accommodation :**

Balcony

- **Outside amenities :**

1 hammock(s)



living room

### Services

- **washing :**

Sheets, Towels, Linen, Comforter(s), Comforter(s), Pillows

- **Single family home :**

Cleaning on departure

- **Personnel :**

Baby sitting supplement, Massage supplement

### For your guidance

- **For your guidance**

Kids welcome

Pets friendly

Non smoking rental, cell phone network coverage

Water : hot/cold

Electricity supply : mains



dining room

Floor plan

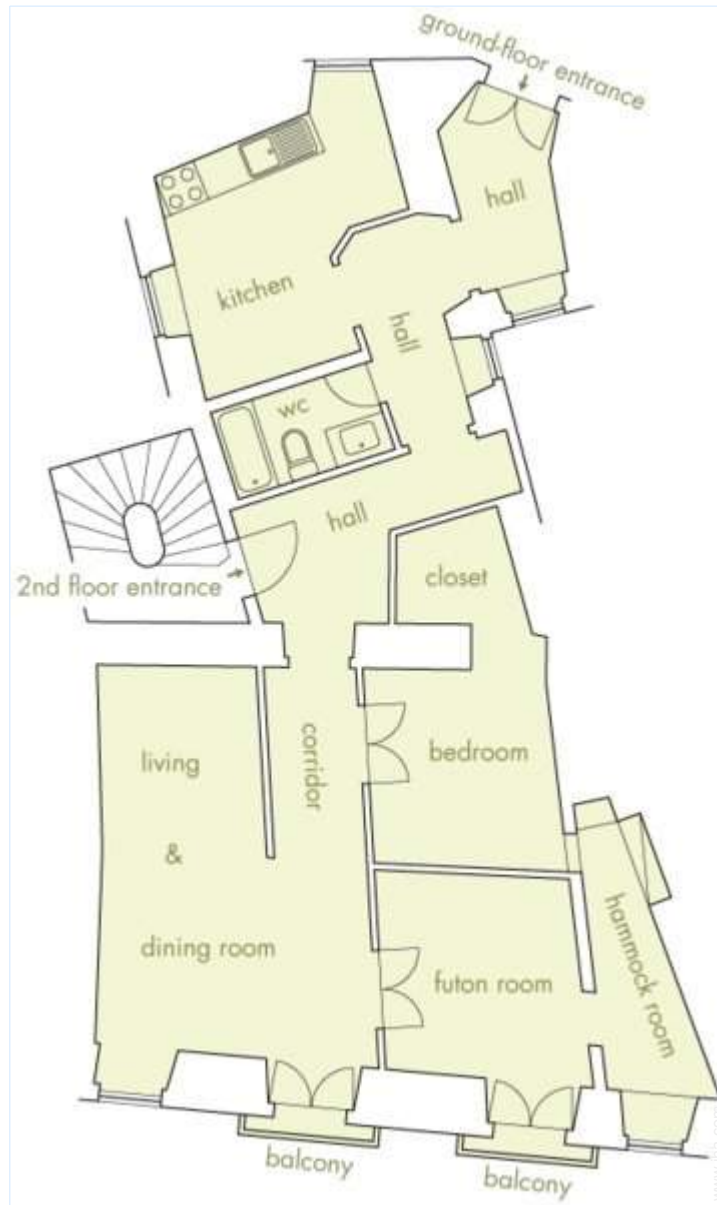


Photo album - 1



view from the balcony



view from the balcony



dining room



dining room



dining room



Photo album - 2



living room

living room

view from the living room



interior

small bedroom

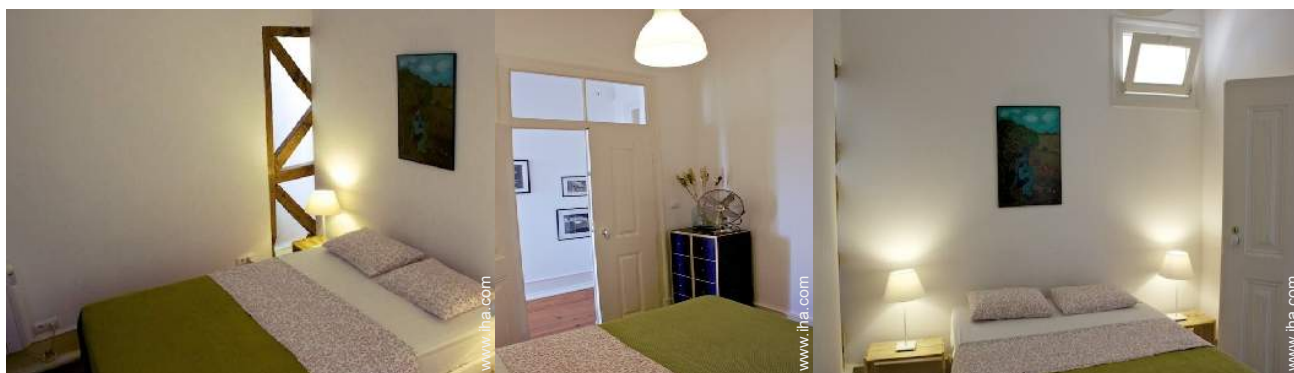
small bedroom



small bedroom

interior

sleeping den



bedroom

bedroom

bedroom

Photo album - 3



bedroom

bathroom

bathroom



kitchen

kitchen

kitchen



kitchen

interior

interior



façade

façade

Surroundings

### Location & Access



GPS coordinates in degrees, minutes, seconds: Latitude 38° 42'45.32"N - Longitude 9°7'43.73"W ([Dwelling](#))

#### Address

→ Rua Guilherme Braga, 19  
1000 Lisbon

#### • Airport Lisbon Portela

→ Lisbon, Lisbon District, Lisbon and Tagus Valley, Portugal  
→ Distance : 4.5mi.  
→ Time : 20'

#### • Railroad station Lisboa Santa Apolónia

→ Lisbon, Lisbon District, Lisbon and Tagus Valley, Portugal  
→ Distance : 990'  
→ Time : 10'

#### • Freeway (exit) A1

→ Lisbon, Lisbon District, Lisbon and Tagus Valley, Portugal  
→ Distance : 6mi.  
→ Time : 30'

- Cascais : Distance : 18.5mi.
- Sintra : Distance : 20mi.
- Évora : Distance : 84mi.

### Contact

Last Name SAMPAIO Cristina  
City LISBOA  
Country Portugal

Spoken languages     



Vacation rental  
Lisbon District - Lisbon and Tagus Valley  
"Casa d'Alfama"

9  
[Book now](#)

Availability calendar - from : may 2012

May	Tu	W	Th	F	Sa	Su	M	Tu	W	Th	F	Sa	Su	M	Tu	W	Th	F	Sa	Su	M	Tu	W	Th	F	Sa	Su	M	Tu	W	Th	
2012	1	2	3	4	5	6	7	8	9	10	11	12	13	14	15	16	17	18	19	20	21	22	23	24	25	26	27	28	29	30	31	

June	F	Sa	Su	M	Tu	W	Th	F	Sa	Su	M	Tu	W	Th	F	Sa	Su	M	Tu	W	Th	F	Sa							
2012	1	2	3	4	5	6	7	8	9	10	11	12	13	14	15	16	17	18	19	20	21	22	23	24	25	26	27	28	29	30
	-	-	-	-	-	-	-	-	-	-	-	-	-	-	-	-	-	-	-	-	-	-	-	-	-	-	-	-	-	-

Jul	Su	M	Tu	W	Th	F	Sa	Su	M	Tu	W	Th	F	Sa	Su	M	Tu	W	Th	F	Sa	Su	M	Tu							
2012	1	2	3	4	5	6	7	8	9	10	11	12	13	14	15	16	17	18	19	20	21	22	23	24	25	26	27	28	29	30	31
	-	-	-	-	-	-	-	-	-	-	-	-	-	-	-	-	-	-	-	-	-	-	-	-	-	-	-	-	-	-	

Reserved
  Mid season
  High season

[Month : Next >>](#)



Promotions : \$107 / Night \* from 12/07/01 to 12/07/31 - 2 person(s)

\* Converted at the rate indicated : €100 = \$125.87 = £80.11

Rental rates - Apartment-Flat - 4 Person(s)

Rates	Night	Weekend	week	2 weeks	Month
<span style="color: green;">■</span> Low season	\$86 * > 3	-	-	-	-
<span style="color: blue;">■</span> Mid season	\$101 * > 3	-	-	-	-
<span style="color: red;">■</span> High season	\$121 * > 3	-	-	-	-

> Minimum Night

[Book now](#)





dining room

dining room

dining room



view from the balcony

view from the balcony

### Booking conditions

#### • Reservation

- Payment made at time of reservation : 30% of rental sum
- Payment balance : on return of keys
- Deposit required : \$252 \*

#### • Rental

- Cleaning charge on departure included
- Anticipated supplement for :
  - animals

[▶ Book now](#)

[▶ Contact the owner](#)

### Accepted methods of payment

- Bank transfer (wire) • PayPal

Contact directly the property owners

[www.iha.com](http://www.iha.com)  
Advert No.  
51285  
[>> Book now <<](#)

### Contact

Last Name SAMPAIO Cristina  
City LISBOA  
Country Portugal

Spoken languages



\* Converted at the rate indicated : €100 = \$125.87 = £80.11

Advert No. 51285

[www.iha.com](http://www.iha.com)



Internet  
Holiday  
Ads



Internet  
Holiday  
Ads

