

# Vacation rental Estoril's Coast "Get to know Estoril"



House, detached, single storey,  
seperate entrance, in(on) a(an) Private  
property

Setting : pleasant, ocean

Capacity : 6 person(s)

Bedroom(s) : 2

Room(s) : 4

Estoril - Lisbon District - Lisbon and Tagus Valley  
Portugal

Advert No. 70960

[www.iha.com](http://www.iha.com)



Internet  
Holiday  
Ads



Internet  
Holiday  
Ads



### Vacation rental



House, detached, single storey, separate entrance, in(on) a(an) Private property

- **Ideal for family, senior(s)**
- **View :** not overlooked, mountain, garden/park, forest
- **Setting :** pleasant, ocean
- **Exposure :** South-west

### Goodies

- **Advantages :**  
Darts
- **baby equipment :**  
High chair, infant tub, baby potty



the property

### Surroundings & location



### Leisure

- **Leisure activities less than 12 miles :**  
Bathing, snorkelling, surfing, windsurfing, sailing, kite surfing, golf, tennis, squash, riding school, pathway/broadwalk, coastal/forest paths, mountain bike (path), kite flying, flying (club), glider (club), boat trips, rollerblade/rollerskate (circuit), skate board (ramps), race track, RC modelling track, ten-pin bowling, basketball, volleyball, paintball, fishing, fishing
- **Supervised :**  
Sailing school, tennis school, riding school
- **Attractions and relaxation :**  
Bar/pub, discotheque, restaurant, movie theater, park and garden, leisure park, nature reserve, exhibition center, art gallery, historical site, museum, theater, antiques & bric-a-brac, local craftstore, casino, thermal baths, sauna, beauticians

### Surroundings

- **Locality :**
  - Sea/ocean 1.25mi.
  - Sandy beach 1.25mi.
  - Nudist beach 15.5mi.
  - Public swimming pool 1.85mi.
  - Public tennis court 0.62mi.
  - 9 hole golf course 990'
  - 18 hole golf course 990'
  - Windsurfing spots 6mi.
  - Surfing spots 3mi.
  - Cliff 3mi.
  - Forest <165'
  - Mountain range 9mi.
  - Marina 4.5mi.
- **Amenities :**
  - Village center 330'
  - Downtown 0.93mi.
  - Bus stop / bus station 330'
  - Bus pick up point beach 330'
  - Car rental 0.93mi.
  - Boat rental 4.5mi.
  - Breadstore 0.93mi.
  - Caterer 330'
  - Local stores 0.93mi.
  - Supermarket 0.93mi.
  - High class retailers 0.93mi.
  - Hairdressing salon 0.93mi.
  - Mail office 0.93mi.
  - Bank 0.62mi.
  - ATM 0.62mi.
  - Drugstore 0.93mi.
  - Hospital 3mi.

- Dispensary 1.5mi.



façade



panorama



Summer

### Exterior

- **Size of grounds :**  
4,300 Sq.ft.
- **Outside accommodation :**  
Balcony 65 Sq.ft.
- **Outside setting :**  
Enclosed grounds 4,300 Sq.ft., yard 215 Sq.ft., lawn 323 Sq.ft., orchard < 1,076 Sq.ft., kitchen garden 215 Sq.ft.
- **Outside amenities :**  
BBQ, yard table(s), 8 yard seat(s), arbour, 2 chaise(s) longue(s), 2 hammock(s), climbing frame



Outside amenities

### Interior

- **Receive up to guest(s) :**  
6 person(s) - 4 adults, 2 kids
- **Liveable floor area :**  
750 Sq.ft.
- **Interior layout :**  
4 Room(s), 2 bedroom(s), 1 bathroom, living room 237 Sq.ft., separate kitchen, laundry room, veranda
- **Sleeps - bed(s) :**  
1 full bed(s), 1 twin bed(s), 2 bunk beds, 1 sleeper sofa(s) 1 pers
- **Guest facilities :**  
T.v points, wardrobe, cupboard, Hanging wardrobe, hair dryer, electric heating, Drapes, Blinds, Rolling shutters
- **Appliances :**  
Crockery/flatware, kitchen utensils, electric coffee maker, toaster, juicer, electric raclette set, meat broiler, gaz stove, oven, microwave oven, extractor hood, refrigerator, washing machine, vacuum cleaner, iron, ironing board

### Services

- **washing :**  
Sheets (1 X / per week), Towels (1 X / per week), Linen, Comforter(s), Comforter(s), Pillows
- **Single family home :**  
Serviced (1 X / per week), Cleaning on departure

### For your guidance

- **For your guidance**  
Kids welcome  
Pets accepted under certain conditions (ask the owner)  
Non smoking rental, cell phone network coverage, personal transport advisable  
Water : hot/cold  
Local voltage supply : 220-240V / 50Hz  
Electricity supply : mains



veranda

Floor plan

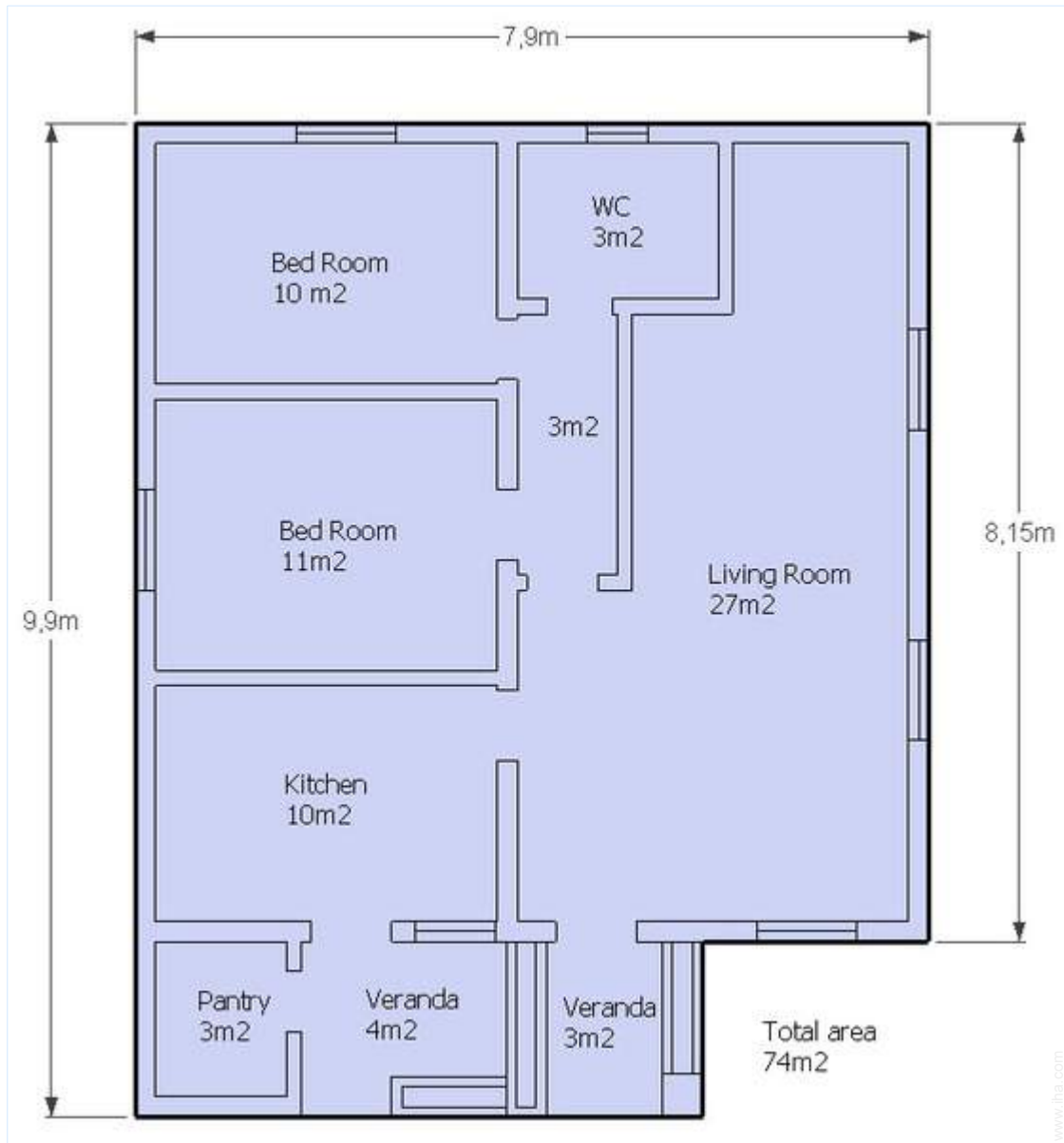


Photo album - 1



panorama



façade



the property



Summer



veranda

Photo album - 2



Outside amenities



view from the garden/park



kitchen



kitchen



dining room



interior



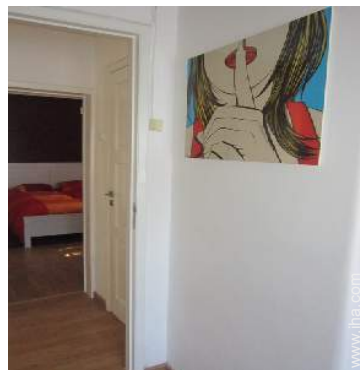
bedroom



bedroom



bunk beds



view from the bedroom

Photo album - 3



bedroom



full bed(s)



view from the bedroom



living room



Single family home



outside furniture



leisure equipment



Equipment at the guest's disposal



enclosed grounds

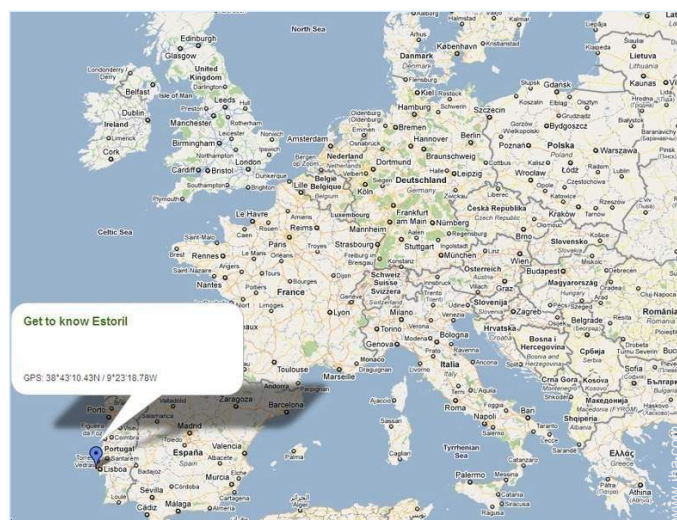
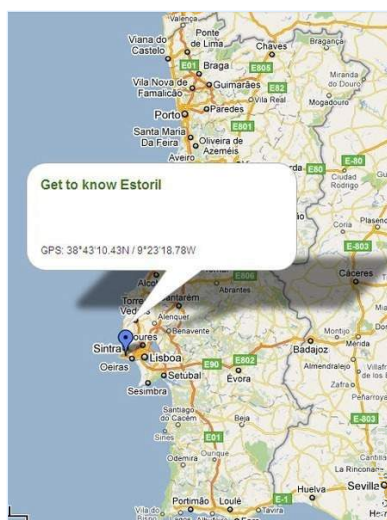
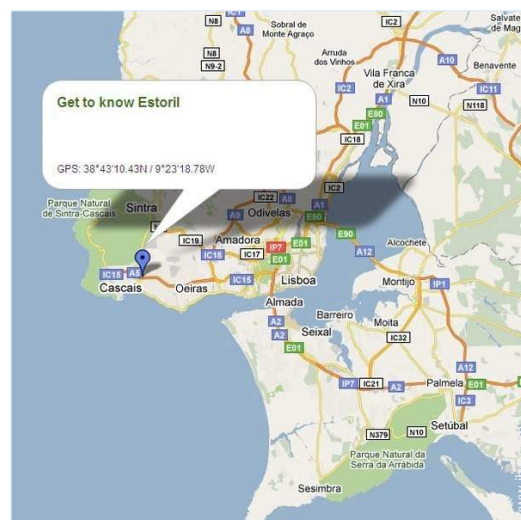


Leisure facilities




leisure equipment

Route map



Location & Access

 GPS coordinates in degrees, minutes, seconds: Latitude 38°43'10.4"N - Longitude 9°23'18.78"W (Dwelling)

Address

→ Rua Direita 128  
2765 Estoril

• Airport Lisbon Portela

→ Lisbon, Lisbon District, Lisbon and Tagus Valley, Portugal  
→ Distance : 18mi.  
→ Time : 30'

• Bus station Estoril

→ Estoril, Lisbon District, Lisbon and Tagus Valley, Portugal  
→ Distance : 1.85mi.  
→ Time : 10'

- Lisbon : Distance : 12.5mi.
- Cascais : Distance : 3mi.
- Sintra : Distance : 6mi.

Contact

Last Name Mr. WOLFARTH L.  
Address Rua Direta 128  
City 2765-122 ESTORIL  
Country Portugal

Spoken languages



Vacation rental  
Lisbon District - Lisbon and Tagus Valley  
"Get to know Estoril"

9  
[Book now](#)

Availability calendar - from : may 2012

May	Tu	W	Th	F	Sa	Su	M	Tu	W	Th	F	Sa	Su	M	Tu	W	Th	F	Sa	Su	M	Tu	W	Th	F	Sa	Su	M	Tu	W	Th	
2012	1	2	3	4	5	6	7	8	9	10	11	12	13	14	15	16	17	18	19	20	21	22	23	24	25	26	27	28	29	30	31	

June	F	Sa	Su	M	Tu	W	Th	F	Sa	Su	M	Tu	W	Th	F	Sa	Su	M	Tu	W	Th	F	Sa							
2012	1	2	3	4	5	6	7	8	9	10	11	12	13	14	15	16	17	18	19	20	21	22	23	24	25	26	27	28	29	30
	-	-	-	-	-	-	-	-	-	-	-	-	-	-	-	-	-	-	-	-	-	-	-	-	-	-	-	-	-	-

Jul	Su	M	Tu	W	Th	F	Sa	Su	M	Tu	W	Th	F	Sa	Su	M	Tu	W	Th	F	Sa	Su	M	Tu							
2012	1	2	3	4	5	6	7	8	9	10	11	12	13	14	15	16	17	18	19	20	21	22	23	24	25	26	27	28	29	30	31
	-	-	-	-	-	-	-	-	-	-	-	-	-	-	-	-	-	-	-	-	-	-	-	-	-	-	-	-	-	-	

Reserved
  Low season
  Mid season

[Month : Next >>](#)

Rental rates - House - 6 Person(s)

Rates	Night	Weekend	week	2 weeks	Month
<span style="color: green;">■</span> Low season	\$76 * > 2	\$151 * (Friday)	\$503 * (Saturday)	\$755 *	\$1259 *
<span style="color: blue;">■</span> Mid season	\$113 * > 2	\$227 * (Friday)	\$755 * (Saturday)	\$1133 * (Saturday)	\$1888 *
<span style="color: magenta;">■</span> Festive specials	\$113 * > 2	\$227 * (Friday)	\$755 * (Saturday)	-	-
<span style="color: orange;">■</span> Promotional period	\$50 * > 2	\$101 * (Friday)	\$378 * (Friday)	\$629 *	\$881 *

(Check-in day)
> Minimum Night

[Book now](#)

Advert No. 70960

www.iha.com



Internet  
Holiday  
Ads



Internet  
Holiday  
Ads





the property

Summer

veranda



panorama

façade

### Booking conditions

#### • Reservation

- Payment made at time of reservation : 40% of rental sum
- Payment balance : on return of keys
- Deposit required : \$252 \*

#### • Rental

- Service charges to be added
- Cleaning charge on departure included
- Anticipated supplement for :  
- supplementary bed(s)

[▶ Book now](#)

[▶ Contact the owner](#)

### Accepted methods of payment

- Bank transfer (wire) • Cash

Contact directly the property owners

[www.iha.com](http://www.iha.com)  
Advert No.  
70960  
**>> Book now <<**

### Contact

Last Name Mr. WOLFARTH L.  
Address Rua Direta 128  
City 2765-122 ESTORIL  
Country Portugal

Spoken languages



\* Converted at the rate indicated : €100 = \$125.87 = £80.11  
Advert No. 70960

[www.iha.com](http://www.iha.com)



Internet  
Holiday  
Ads



Internet  
Holiday  
Ads

