

# Luxury vacation rental Lake Iseo "Le Fontanelle sul Lago"



Luxury Residence, detached, single storey, separate entrance, in (on) a(an) Private property

Setting : lakeside, tranquil

Capacity : 10 person(s)

Bedroom(s) : 3

Paratico - Brescia Province (BS) - Lombardy

Italy

Advert No. 59229

[www.iha.com](http://www.iha.com)



Internet  
Holiday  
Ads



Internet  
Holiday  
Ads



### Luxury vacation rental



Luxury Residence, detached, single storey, separate entrance, in(on) a(an) Private property

- **Ideal for all age groups, family**
- **View :** mountain, country side, swimming pool, garden/park, prairie, lake
- **Setting :** lakeside, tranquil
- **Exposure :** South

### Goodies

- **Swimming pool :**  
Shared swimming pool, rectangular (length 65', width 18'), cascading, illuminated (open from 'june 01' till 'september 30')
- **Parking :**  
Covered parking : 1 individual stall locked, 1 communal, 1 carport
- **baby equipment :**  
High chair, comfort station, stroller



garden/park view

### Surroundings & location



Mountain



Golf



Ski



Fishing



Culture

#### Leisure

- **Leisure activities less than 12 miles :**

Alpine skiing, bathing, pedalo, scuba diving, water skiing, windsurfing, sailing, golf, tennis, hiking, rock climbing, paragliding, boat trips, mini-golf, basketball, volleyball, fishing, fishing

- **Supervised :**

Sailing school, tennis school

- **Attractions and relaxation :**

Bar/pub, discotheque, restaurant, movie theater, park and garden, historical site, cellar and wine tasting, health spa

#### Surroundings

- **Locality :**

- Ski slopes 12.5mi.
- Sandy beach 0.5mi.
- Public tennis court 1.5mi.
- 18 hole golf course 6mi.
- River 1.5mi.
- Lake 0.3mi.

- **Amenities :**

- Downtown 0.62mi.
- Bus stop / bus station 0.5mi.
- Breadstore 0.62mi.
- Local stores 1.25mi.
- Supermarket 0.93mi.
- High class retailers 1.25mi.
- Hairdressing salon 0.62mi.
- Internet cafe 0.62mi.
- Mail office 0.62mi.
- Bank 0.62mi.
- Drugstore 0.62mi.
- Doctor 0.62mi.
- Hospital 4.5mi.



view from the terrace



façade



view from the garden/park

### Interior

- **Receive up to guest(s) :**  
10 person(s) - 6 adults, 4 kids
- **Liveable floor area :**  
3,000 Sq.ft.
- **Interior layout :**  
3 bedroom(s), 1 bathroom, 3 shower room, 3 washroom, living room 600 Sq.ft., sitting room 430 Sq.ft., separate kitchen, dining room, tv den, walk-in closet, laundry room, veranda
- **Sleeps - bed(s) :**  
3 full bed(s), 2 twin bed(s)
- **Guest facilities :**  
Fireplace, T.V., t.v points, cable/satellite, wardrobe, radio alarmclock, fully air-conditioned, central heating, Drapes, Double glazed, remote controlled gates
- **Appliances :**  
Crockery/flatware, kitchen utensils, cafetiere, gaz stove, oven, micro-wave oven, refrigerator, washing machine, vacuum cleaner, iron, ironing board

### Exterior

- **Size of grounds :**  
0.5 acre
- **Outside accommodation :**  
Terrace 160 Sq.ft., covered terrace 270 Sq.ft., roof terrace 237 Sq.ft., balcony 160 Sq.ft., sundeck 323 Sq.ft., traditional tent
- **Outside setting :**  
Private courtyard 430 Sq.ft., yard 7,500 Sq.ft.
- **Outside amenities :**  
Summer living area, BBQ, yard table(s), 6 yard seat(s), 2 sun recliner(s)



master bedroom

### Services

- **washing :**  
Sheets (1 X / per week), Towels (1 X / per week), Linen (1 X / per week), Beach towels (1 X / per week), Comforter(s) (1 X / per week), Comforter(s) (1 X / per week), Pillows (1 X / per week)
- **Single family home :**  
Cleaning on departure

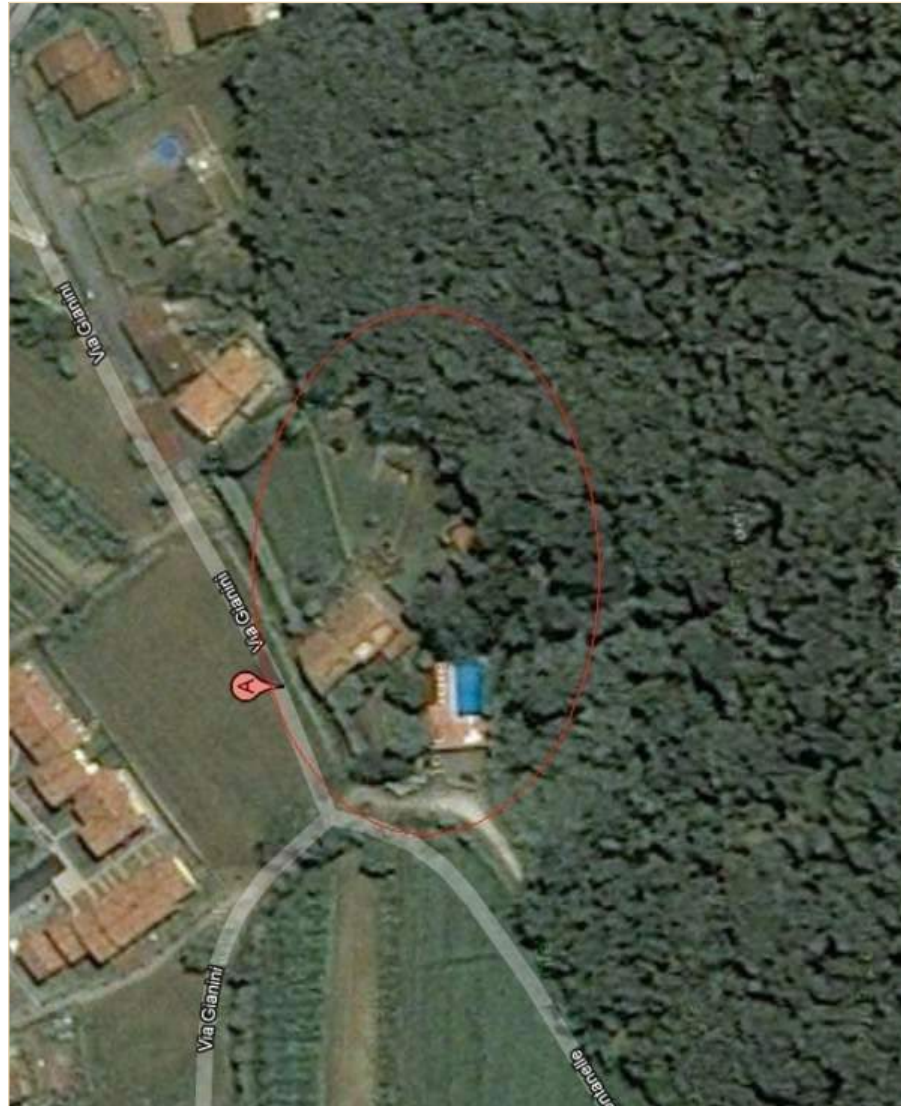
### For your guidance

- **For your guidance**  
Kids welcome  
Pets accepted under certain conditions (ask the owner)  
Non smoking rental, cell phone network coverage, personal transport advisable  
Water : hot/cold  
Local voltage supply : 110-120V / 60Hz



view from the bedroom

Floor plan



www.ihacom

Advert No. 59229

www.ihacom



Internet  
Holiday  
Ads



Internet  
Holiday  
Ads



Photo album - 1



façade



view from the terrace



garden/park view



view from the garden/park



view from the bedroom

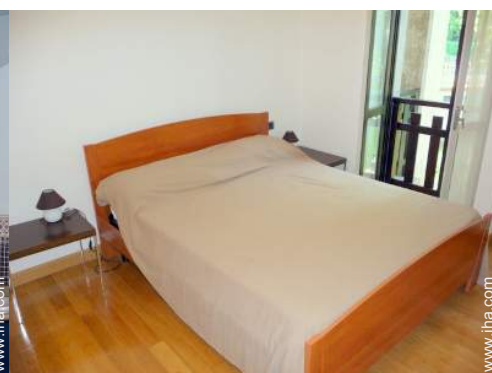
Photo album - 2



master bedroom



bathroom



bedroom



bathroom



bedroom



bathroom



bedroom



living room



dining room

Photo album - 3



seperate kitchen



Swimming pool



Swimming pool



Parking



Summer



Autumn



Autumn

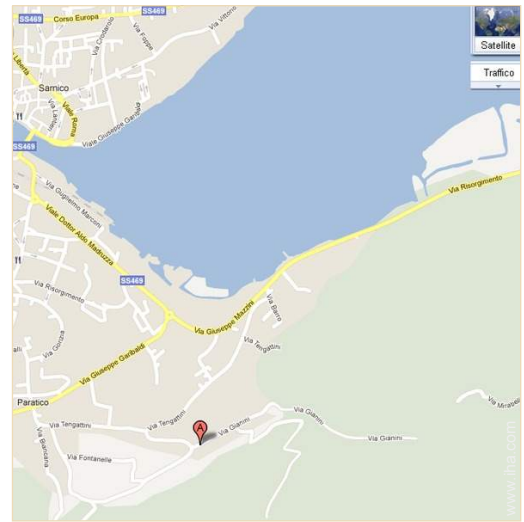
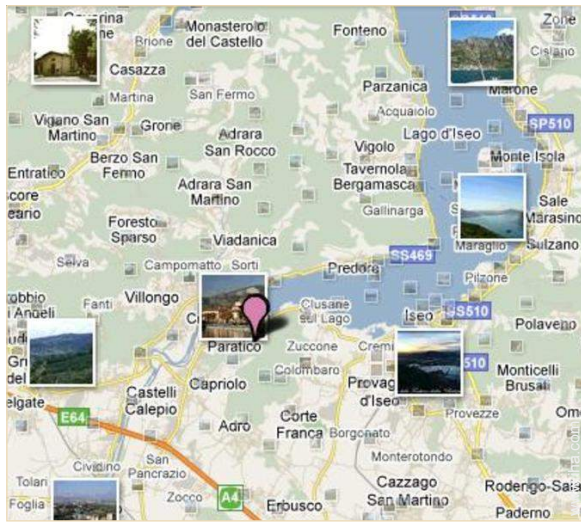


Autumn



Summer

Route map



Location & Access



GPS coordinates in degrees, minutes, seconds: Latitude 45° 39'12.54"N - Longitude 9°57'59.86"E ([Dwelling](#))

Address

→ Via Gianini 6  
25030 Paratico

• [Airport Bergamo Orio al serio](#)

→ Milan, Milan Province, Lombardy, Italy  
→ Distance : 16,8mi.  
→ Time : 20'

• [Freeway \(exit\) Palazzolo A4](#)

→ Palazzolo sull'Oglio, Brescia Province, Lombardy, Italy  
→ Distance : 4.5mi.  
→ Time : 10'

• [Railroad station Palazzolo sull'Oglio](#)

→ Palazzolo sull'Oglio, Brescia Province, Lombardy, Italy  
→ Distance : 4.5mi.  
→ Time : 10'

• Iseo : Distance : 3mi.

• Sarnico : Distance : 0.62mi.

Contact

Last Name Mr. SANFILIPPO Giovanni & Miss SBARDELLATI Silvia

Address Via Gianini 6

City 25030 PARATICO

Country Italy

Cell phone # +39 3923459108 (Italy)

Spoken languages



Luxury vacation rental  
Brescia Province - Lombardy  
"Le Fontanelle sul Lago"

9

[Book now](#)

Availability calendar - from : may 2012

May	Tu	W	Th	F	Sa	Su	M	Tu	W	Th	F	Sa	Su	M	Tu	W	Th	F	Sa	Su	M	Tu	W	Th	F	Sa	Su	M	Tu	W	Th	
2012	1	2	3	4	5	6	7	8	9	10	11	12	13	14	15	16	17	18	19	20	21	22	23	24	25	26	27	28	29	30	31	

June	F	Sa	Su	M	Tu	W	Th	F	Sa	Su	M	Tu	W	Th	F	Sa	Su	M	Tu	W	Th	F	Sa							
2012	1	2	3	4	5	6	7	8	9	10	11	12	13	14	15	16	17	18	19	20	21	22	23	24	25	26	27	28	29	30
	-	-	-	-	-	-	-	-	-	-	-	-	-	-	-	-	-	-	-	-	-	-	-	-	-	-	-	-	-	-

Jul	Su	M	Tu	W	Th	F	Sa	Su	M	Tu	W	Th	F	Sa	Su	M	Tu	W	Th	F	Sa	Su	M	Tu							
2012	1	2	3	4	5	6	7	8	9	10	11	12	13	14	15	16	17	18	19	20	21	22	23	24	25	26	27	28	29	30	31
	-	-	-	-	-	-	-	-	-	-	-	-	-	-	-	-	-	-	-	-	-	-	-	-	-	-	-	-	-	-	

[Month : Next >>](#)

Rental rates - Luxury Residence - 10 Person(s)

Rates	Night	Weekend	week	2 weeks	Month
<span style="color: blue;">■</span> Mid season	-	\$352 *	\$1636 *	\$2769 *	-
<span style="color: red;">■</span> High season	-	-	\$1888 * (Saturday)	\$3776 * (Saturday)	-

(Check-in day)

[Book now](#)

Advert No. 59229

www.iha.com



Internet  
Holiday  
Ads



Internet  
Holiday  
Ads





garden/park view



view from the garden/park



view from the bedroom



façade



view from the terrace

### Booking conditions

#### • Reservation

- Payment made at time of reservation : 10% of rental sum
- Deposit required : \$252 \*

#### • Rental

- Service charges included
- Day tax included
- Cleaning charge on departure included
- Anticipated supplement for :
  - animals
  - firewood

[▶ Book now](#)

[▶ Contact the owner](#)

### Accepted methods of payment

- Bank transfer (wire) • PayPal • Cash

Contact directly the property owners

[www.iha.com](http://www.iha.com)  
Advert No.  
59229  
[>> Book now <<](#)

### Contact

Last Name Mr. SANFILIPPO Giovanni  
& Miss SBARDELLATI  
Silvia  
Address Via Gianini 6  
City 25030 PARATICO  
Country Italy  
Cell phone # +39 3923459108 (Italy)

Spoken languages



\* Converted at the rate indicated : €100 = \$125.87 = £80.11

Advert No. 59229

[www.iha.com](http://www.iha.com)



Internet  
Holiday  
Ads



Internet  
Holiday  
Ads

