

Vacation rental Val Camonica "Chalet Presanella"



Mountain Chalet, detached, single storey, separate entrance, in(on) a(an) Resort

Setting : natural, serene

Capacity : 4 person(s)

Bedroom(s) : 1

Room(s) : 2

Ponte di Legno - Brescia Province (BS) - Lombardy
Italy

Advert No. 42821

www.iha.com



Internet
Holiday
Ads



Internet
Holiday
Ads



Vacation rental



Mountain Chalet, detached, single storey, separate entrance, in(on) a(an) Resort

- **Ideal for family groups, sporty types**
- **View :** panoramic, not overlooked, mountain, garden/park, prairie, forest
- **Setting :** natural, serene
- **Exposure :** South

Goodies

- **Swimming pool :**
Shared swimming pool, circular (diameter 15'), heated, step ladder, child secure, plunge pool (open from 'july 01' till 'august 28')
- **Tennis :**
Shared tennis
- **Parking :**
Parking uncovered : 1 off road
- **Advantages :**
Ski locker, ski boot warmer, 4 snowshoes (pairs), pool table, table football, darts, ping-pong table, 4 ping-pong bats, volley ball court, 10 bike(s)
- **baby equipment :**
High chair, comfort station, infant tub, baby potty, playpen

Surroundings & location



Mountain Golf Ski Fishing

Leisure

- **Leisure activities less than 12 miles :**
Alpine skiing, cross-country skiing, off-piste skiing, ski-trekking, Télémart skiing, snowboarding, luge (run), ice-skating, skidoo, dogsledding, golf, tennis, riding school, pathway/broadwalk, hiking, rappel, rock climbing, mountain bike (path), horse-drawn carriage, horse trekking, donkey rides, mini-golf, volleyball, fishing, fishing, pétanque field
- **Supervised :**
Ski school, kids ski area
- **Attractions and relaxation :**
Bar/pub, discotheque, restaurant, movie theater, park and garden, nature reserve, museum, local craftstore, sauna, steam baths, health spa, beauticians, fitness center

Surroundings

- **Locality :**
 - Ski slopes 0.5mi.
 - Ski lifts 0.5mi.
 - Ice skating rink 0.3mi.
 - Public swimming pool 2.5mi.
 - Public tennis court 165'
 - 9 hole golf course 3mi.
 - River <165'
 - Forest <165'
 - Mountain range <165'
 - Via ferrata-alpinism 6mi.
- **Amenities :**
 - Kindergarten 1.25mi.
 - Village center 0.62mi.
 - Bus stop / bus station 0.62mi.
 - Ski bus pick up point <165'
 - Bike/mountain bike hire <165'
 - Ski hire store 0.3mi.
 - Household linens for hire/laundry services <165'
 - Breadstore
 - Supermarket
 - Hairdressing salon 0.62mi.
 - Internet cafe <165'
 - Mail office 0.62mi.
 - Bank 0.62mi.
 - Drugstore 0.62mi.
 - Doctor 0.62mi.
 - Hospital 9mi.
 - Dispensary 0.62mi.



Mountain Chalet



panorama



General

Exterior

- **Size of grounds :**
2.5 acres
- **Outside setting :**
Landscaped yard 1,076 Sq.ft., lawn 1,076 Sq.ft., wooded park 2.5 acres, woodsy 5,400 Sq.ft., ornamental lake, river, creek
- **Outside amenities :**
BBQ, yard table(s), 2 yard seat(s), 12 chaise (s) longue(s), sun lounger, child's swing



View

Interior

- **Receive up to guest(s) :**
4 person(s) - 4 adults
- **Liveable floor area :**
380 Sq.ft.
- **Interior layout :**
2 Room(s), 1 bedroom(s), 1 shower room, 1 washroom, living room 160 Sq.ft., american style kitchen
- **Sleeps - bed(s) :**
1 full bed(s), 1 sleeper sofa(s) 2 pers, 1 baby cradle
- **Guest facilities :**
T.V., DVD player, board games, book collection, movie collection, t.v points, fax, computer, cable/satelite, wifi (wireless internet access), wardrobe, cupboard, safe deposit box, hair dryer, partly air-conditioned, central heating, Drapes, Double glazed
- **Appliances :**
Crockery/flatware, kitchen utensils, cafetiere, electric espresso coffee maker, meat broiler, electric stove, electric hobs, micro-wave oven, extractor hood, refridgerator

Services

- **washing :**
Sheets (1 X / per week), Towels supplement (1 X / per week +\$6 *), Comforter(s) (1 X / per week), Pillows (1 X / per week)
- **Single family home :**
Serviced (3 X / per week), Cleaning on departure supplement (+\$64 *), Yard/ swimming pool maintenance (1 X / per week), Snow clearance (7 X / per week), Caretaker/ concierge, Parking
- **Restauration :**
Breakfast supplement (+\$8 *)

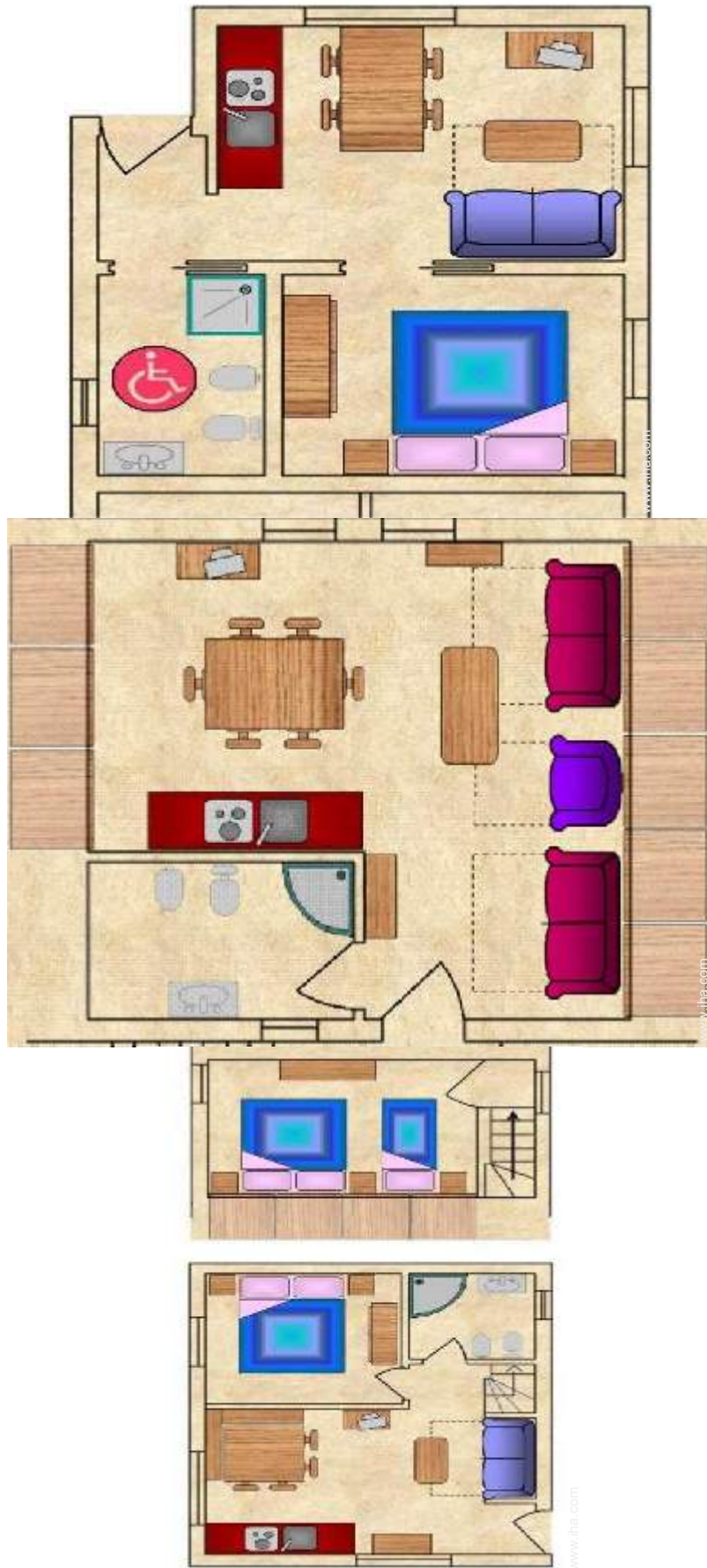
For your guidance

- **For your guidance**
Kids welcome
Present on site : pets, farm animals, wild animals
Cell phone network coverage, personal transport advisable
Water : hot/cold
Local voltage supply : 220-240V / 50Hz
Electricity supply : mains
- **Handicapped people welcome**
Wheelchair access
Fitted out for the disabled : mobility



lawn

Floor plan



Advert No. 42821

www.ihacom.com



Internet
Holiday
Ads



Internet
Holiday
Ads



Photo album - 1



façade



panorama



Mountain Chalet



General



lawn



View

Photo album - 2



overall view



Kitchen Area



bedroom



interior



washroom



Goodies

Photo album - 3



Goodies



ping-pong table



plunge pool



pool table



ski locker



yard seat(s)



Winter

Route map



Location & Access



GPS coordinates in degrees, minutes, seconds: Latitude 46° 14'20"N - Longitude 10°28'10"E (Dwelling)

Address

→ Via Cavaione di dentro 9
Temu'
25056 Ponte di Legno

• Freeway (exit) Brescia Ovest

→ Brescia, Brescia Province, Lombardy, Italy
→ Distance : 68,5mi.
→ Time : 2h

• Airport Orio al Serio

→ Bergamo, Bergamo Province, Lombardy, Italy
→ Distance : 56mi.
→ Time : 1h30'

• Bus station Temu'

→ Temù, Brescia Province, Lombardy, Italy
→ Distance : 1.85mi.
→ Time : 5'

Contact

Last Name	Mr. SOVERINI Maurizio CAMPING PRESANELLA SAS
Address	Via Cavaione di dentro 9 Temu'
City	25056 PONTE DI LEGNO
Country	Italy
Phone #	+39 0364 94219 (Italy) From 09:00 AM to 09:00 PM (GMT/UTC +01:00)
Fax #	+39 0364 948542 (Italy)
Spoken languages	



Availability calendar - from : may 2012

May	Tu	W	Th	F	Sa	Su	M	Tu	W	Th	F	Sa	Su	M	Tu	W	Th	F	Sa	Su	M	Tu	W	Th	F	Sa	Su	M	Tu	W	Th	
2012	1	2	3	4	5	6	7	8	9	10	11	12	13	14	15	16	17	18	19	20	21	22	23	24	25	26	27	28	29	30	31	

June	F	Sa	Su	M	Tu	W	Th	F	Sa	Su	M	Tu	W	Th	F	Sa	Su	M	Tu	W	Th	F	Sa							
2012	1	2	3	4	5	6	7	8	9	10	11	12	13	14	15	16	17	18	19	20	21	22	23	24	25	26	27	28	29	30
	-	-	-	-	-	-	-	-	-	-	-	-	-	-	-	-	-	-	-	-	-	-	-	-	-	-	-	-	-	-

Jul	Su	M	Tu	W	Th	F	Sa	Su	M	Tu	W	Th	F	Sa	Su	M	Tu	W	Th	F	Sa	Su	M	Tu							
2012	1	2	3	4	5	6	7	8	9	10	11	12	13	14	15	16	17	18	19	20	21	22	23	24	25	26	27	28	29	30	31
	-	-	-	-	-	-	-	-	-	-	-	-	-	-	-	-	-	-	-	-	-	-	-	-	-	-	-	-	-	-	

■ Low season
 ■ Promotional period
 ■ Mid season

[Month : Next >>](#)

Rental rates - Mountain Chalet - 4 Person(s)

Rates	Night	Weekend	week	2 weeks	Month
■ Low season	-	\$152 *	\$394 * (Sunday)	-	-
■ Mid season	-	-	\$622 * (Sunday)	-	-
■ High season	-	-	\$724 * (Sunday)	-	-
■ Festive specials	-	-	\$876 * (Sunday)	-	-
■ Promotional period	-	-	\$483 * (Sunday)	-	-

(Check-in day)

[Book now](#)



Weekend ideas : \$152 / Weekend * - 4 person(s)

* Converted at the rate indicated : €100 = \$127 = £86.8





General



lawn



View



façade



panorama



Mountain Chalet

Booking conditions

• Reservation

- Payment made at time of reservation : 30% of rental sum
- Payment balance : 1 day before the stay
- Deposit required : \$191 *

• Rental

- Service charges included
- Day tax included
- Cleaning charge levy on departure : \$57 *

[▶ Book now](#)

[▶ Contact the owner](#)

Accepted methods of payment

- Visa/Delta/Electron • Switch/Maestro • Bank transfer (wire) • MasterCard/ EuroCard • American Express • Diners Club • Check • Draft • Cash

Contact directly the property owners

www.iha.com
Advert No.
42821
[>> Book now <<](#)

Contact

Last Name Mr. SOVERINI Maurizio
CAMPING PRESANELLA SAS
Address Via Cavaione di dentro 9 Temu'
City 25056 PONTE DI LEGNO
Country Italy
Phone # +39 0364 94219 (Italy)
From 09:00 AM to 09:00 PM (GMT/UTC +01:00)
Fax # +39 0364 948542 (Italy)

Spoken languages



* Converted at the rate indicated : €100 = \$127 = £86.8

Advert No. 42821

www.iha.com



Internet
Holiday
Ads



Internet
Holiday
Ads

