

Vacation rental Upper Vosges "Le Mélèze"



Mountain Chalet, detached, single storey in(on) a(an) Private property

Setting : mountainy

Capacity : 14 person(s)

Bedroom(s) : 5

Room(s) : 7

La Bresse - Vosges (88) - Lorraine

France

Reservation : +33 (0) 3 29 25 44 19 (France)



Advert No. 27774

www.iha.com



Internet
Holiday
Ads



Internet
Holiday
Ads



Vacation rental



Mountain Chalet, detached, single storey in(on) a(an) Private property

- **Ideal for all age groups**
- **View :** panoramic, unobscured, not overlooked, dominant, mountain, city
- **Setting :** mountainy
- **Exposure :** South

Goodies

- **Parking :**
Parking uncovered : 5 reserved stall
- **Advantages :**
Ski locker, sauna, pool table, table football, ping-pong table
- **baby equipment :**
High chair

Surroundings & location



Mountain



Fishing

Leisure

- **Leisure activities less than 12 miles :**

Alpine skiing, cross-country skiing, ski-trekking, snowboarding, luge (run), ice-skating, bathing, pedalo, snorkelling, scuba diving, water skiing, tennis, pathway/broadwalk, hiking, rappel, mountain bike (path), paragliding, horse trekking, mini-golf, rollerblade/rollerskate (circuit), skate board (ramps), go-karting, ten-pin bowling, acrobatics, pétanque field

- **Supervised :**

Ski school, kids ski area

- **Attractions and relaxation :**

Discotheque, restaurant, movie theater, park and garden, nature reserve, exhibition center, art gallery, historical site, local craftstore, casino, sauna, steam baths, health spa, beauticians

Surroundings

- **Locality :**

- Ski slopes 6mi.
- Ski lifts 6mi.
- Ice skating rink 6mi.
- Heated swimming pool 1.25mi.
- Public swimming pool 1.25mi.
- Public tennis court 1.85mi.
- Watersports centre 6mi.
- Waterfall 9mi.
- River 1.25mi.
- Stretch of water 9mi.
- Lake 3mi.
- Forest 1.25mi.
- Mountain range <165'

- **Amenities :**

- Downtown 1.25mi.
- Bus stop / bus station 1.25mi.
- Ski bus pick up point 1.25mi.
- Bike/mountain bike hire 1.25mi.
- Ski hire store 1.25mi.
- Breadstore 1.25mi.
- Caterer 1.25mi.
- Local stores 1.25mi.
- Supermarket 1.5mi.
- Hairdressing salon 1.25mi.
- Mail office 1.25mi.
- Bank 1.25mi.
- ATM 1.25mi.
- Drugstore 1.25mi.
- Doctor 1.25mi.
- Nurse 1.25mi.
- Hospital 18.5mi.



view from the bedroom



view from the bedroom



dining room



Mountain Chalet

Exterior

- **Size of grounds :**
0.37 acre
- **Outside accommodation :**
Terrace, covered terrace, balcony, lanai
- **Outside setting :**
Lawn
- **Outside amenities :**
BBQ, yard table(s), 15 yard seat(s), child's swing



games room

Interior

- **Receive up to guest(s) :**
14 person(s)
- **Liveable floor area :**
1,300 Sq.ft.
- **Interior layout :**
7 Room(s), 5 bedroom(s), 1 bathroom, 1 shower room, 2 washroom, living room 215 Sq.ft., Kitchen Area, dining room, tv den, games room, laundry room, pantry, veranda, loggia
- **Sleeps - bed(s) :**
4 full bed(s), 5 twin bed(s), 1 bunk beds
- **Guest facilities :**
Fireplace, T.V., DVD player, wardrobe, cupboard, Hanging wardrobe, heated towel rail, electric heating, Drapes, Double glazed
- **Appliances :**
Crockery/flatware, kitchen utensils, cafetiere, electric coffee maker, toaster, food processor, electric raclette set, fondue set, electric hobs, oven, micro-wave oven, extractor hood, refridgerator, deep freeze, dish washer, washing machine, clothes dryer, vacuum cleaner, iron, ironing board

Services

- **washing :**
Sheets supplement (1 X / per week +\$11 *), Towels supplement (1 X / per week +\$6 *), Linen supplement (1 X / per week +\$3 *), Beach towels supplement (+\$4 *), Comforter (s), Comforter(s), Pillows
- **Single family home :**
Cleaning on departure supplement (+ \$126 *), Snow clearance, Parking

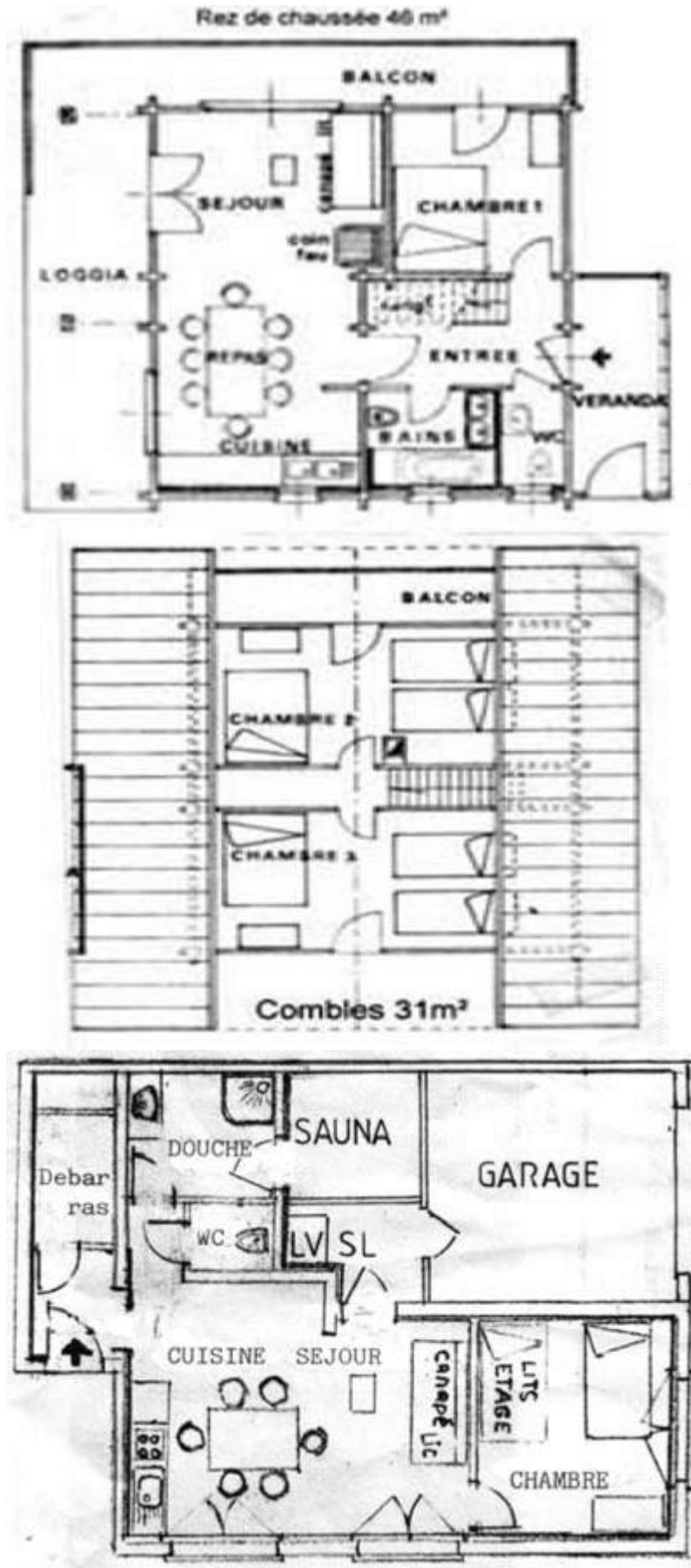
For your guidance

- **For your guidance**
Kids welcome
Pets accepted under certain conditions (ask the owner)
Non smoking rental, cell phone network coverage, personal transport advisable
Water : hot/cold
Local voltage supply : 220-240V / 50Hz
Electricity supply : mains



bedroom

Floor plan



Advert No. 27774

www.iha.com



>> VACATION RENTALS

Internet
Holiday
Ads



Internet
Holiday
Ads



DIRECT BY OWNERS

Photo album - 1



dining room



view from the bedroom



view from the bedroom



Mountain Chalet



bedroom

Advert No. 27774

www.ihacom.com



>> VACATION RENTALS

Internet
Holiday
Ads



Internet
Holiday
Ads



DIRECT BY OWNERS

Photo album - 2



games room



sauna



north-easterly view



Winter



Mountain



Winter



Autumn

Photo album - 3



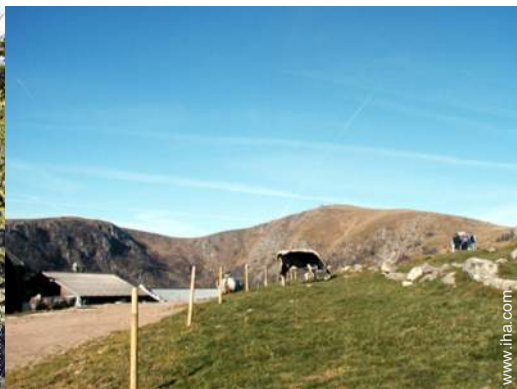
Autumn



Summer



Summer



Summer



Summer

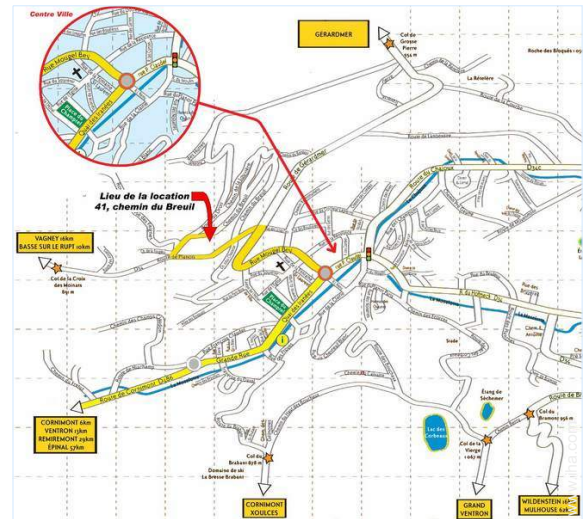
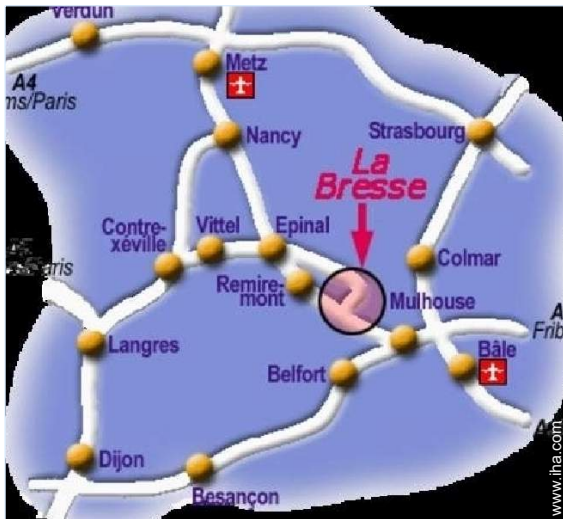


Summer



Autumn

Route map



Location & Access



GPS coordinates in degrees, minutes, seconds: Latitude 47° 59'58"N - Longitude 6°51'58"E (Dwelling)

Address

→ Chemin du Breuil
88250 La Bresse

• Freeway (exit) A31 E21

→ Vittel, Vosges, Lorraine, France
→ Distance : 65mi.
→ Time : 1h30'

• Freeway (exit) A31 E21

→ Nancy, Meurthe et Moselle, Lorraine, France
→ Distance : 81mi.
→ Time : 1h30'

• Railroad station Remiremont

→ Remiremont, Vosges, Lorraine, France
→ Distance : 22,5mi.
→ Time : 45'

• Gérardmer : Distance : 6mi.

• Colmar : Distance : 34mi.

• Épinal : Distance : 36mi.

Contact

Last Name	Mrs. Mr. TOUSSAINT Jean Louis
Address	4 route de Niachamp
City	88250 LA BRESSE
Country	France
Phone #	+33 (0) 3 29 25 44 19 (France)
Cell phone #	+33 (0) 6 87 46 50 88 (France)

Spoken languages



Availability calendar - from : may 2012




May	Tu	W	Th	F	Sa	Su	M	Tu	W	Th	F	Sa	Su	M	Tu	W	Th	F	Sa	Su	M	Tu	W	Th	F	Sa	Su	M	Tu	W	Th	
2012	1	2	3	4	5	6	7	8	9	10	11	12	13	14	15	16	17	18	19	20	21	22	23	24	25	26	27	28	29	30	31	

June	F	Sa	Su	M	Tu	W	Th	F	Sa	Su	M	Tu	W	Th	F	Sa	Su	M	Tu	W	Th	F	Sa							
2012	1	2	3	4	5	6	7	8	9	10	11	12	13	14	15	16	17	18	19	20	21	22	23	24	25	26	27	28	29	30
	-	-	-	-	-	-	-	-	-	-	-	-	-	-	-	-	-	-	-	-	-	-	-	-	-	-	-	-	-	-

Jul	Su	M	Tu	W	Th	F	Sa	Su	M	Tu	W	Th	F	Sa	Su	M	Tu	W	Th	F	Sa	Su	M	Tu							
2012	1	2	3	4	5	6	7	8	9	10	11	12	13	14	15	16	17	18	19	20	21	22	23	24	25	26	27	28	29	30	31
	-	-	-	-	-	-	-	-	-	-	-	-	-	-	-	-	-	-	-	-	-	-	-	-	-	-	-	-	-	-	

[Month : Next >>](#)

Rental rates - Mountain Chalet - 14 Person(s)

Rates	Night	Weekend	week	2 weeks	Month
 Low season	-	\$579 * (Friday)	\$774 * (Saturday)	\$1393 * (Saturday)	-
 Mid season	-	\$604 * (Friday)	\$774 * (Saturday)	\$1393 * (Saturday)	-
 High season	-	-	\$2152 * (Saturday)	-	-

(Check-in day)

[Book now](#)





view from the bedroom



Mountain Chalet



bedroom



dining room



view from the bedroom

Booking conditions

• Reservation

- Payment made at time of reservation : 30% of rental sum
- Payment balance : 2 weeks before the stay
- Deposit required : \$629 *

• Rental

- Service charges to be added
- Day tax in addition
- Cleaning charge levy on departure : \$126 *
- Anticipated supplement for :
 - animals
 - firewood

Accepted methods of payment

- International Money Order • Bank transfer (wire) • Check • Draft • Cash •

Holiday coupon

► [Book now](#)

► [Contact the owner](#)

Contact directly the property owners

www.ihacom.com
Advert No.
27774
>>> [Book now](#) <<

Contact

Last Name	Mrs. Mr. TOUSSAINT Jean Louis
Address	4 route de Niachamp
City	88250 LA BRESSE
Country	France
Phone #	+33 (0) 3 29 25 44 19 (France)
Cell phone #	+33 (0) 6 87 46 50 88 (France)

Spoken languages



* Converted at the rate indicated : €100 = \$125.87 = £80.11

Advert No. 27774

www.ihacom.com



Internet
Holiday
Ads



Internet
Holiday
Ads

