

Gîte - Self Catering Canhas "Casa do Retiro"



Gîte - Self Catering - Country House, detached, 1 floor, separate entrance, in(on) a(an) Private property

Setting : romantic, rustic

Capacity : 9 person(s)

Bedroom(s) : 5

Room(s) : 11

Canhas - Madeira Island

Madeira Islands

Advert No. 71249

www.iha.com



Internet
Holiday
Ads



Internet
Holiday
Ads



Gîte - Self Catering



Gîte - Self Catering - Country House, detached, 1 floor, separate entrance, in(on) a(an) Private property

- **Ideal for large families, couples**
- **View :** sea/ocean, mountain, country side, farmland, monument, pedestrianized street
- **Setting :** romantic, rustic
- **Exposure :** South

Goodies

- **Swimming pool :**
Private swimming pool, rectangular (length 25', width 11.5'), heated, illuminated, steps in, child secure, outside shower (open from 'january 01' till 'december 31')
- **Parking :**
Parking uncovered : 3 internal
- **Advantages :**
Jacuzzi, tanning bed, pool table, table football
- **baby equipment :**
High chair



games room

Surroundings & location



Ocean



Fishing



Culture

Leisure

- **Leisure activities less than 12 miles :**

Banana boat, jet ski, surfing, windsurfing, sailing, canyoning, rafting, golf, tennis, squash, riding school, pathway/broadwalk, coastal/forest paths, rappel, rock climbing, mountain bike (path), hang-gliding, paragliding, boat trips, horse trekking, donkey rides, RC modelling track, paintball, fishing, deep-sea fishing, fishing, spear fishing

- **Supervised :**

Sailing school, dive school, tennis school

- **Attractions and relaxation :**

Bar/pub, discotheque, restaurant, movie theater, karaoke, park and garden, zoo/animal park, sea world, nature reserve, exhibition center, art gallery, historical site, museum, theater, antiques & bric-a-brac, local craftstore, cellar and wine tasting, casino, health spa, Bio farm

Surroundings

- **Locality :**

- Sea/ocean 1.85mi.
- Sandy beach 3mi.
- Shingle beach 3mi.
- Rocky beach 3mi.
- Public swimming pool
- 9 hole golf course
- 18 hole golf course
- Forest
- Marina

- **Amenities :**

- Downtown
- Bus stop / bus station 660'
- Bike/mountain bike hire
- Car rental
- Boat rental
- Scuba diving material hire
- Household linens for hire/laundry services
- Breadstore 660'
- Caterer 330'
- Local stores 660'
- Supermarket 660'
- High class retailers
- Hairdressing salon
- Internet cafe
- Mail office
- Bank
- ATM 165'
- Drugstore 165'
- Doctor 660'
- Hospital
- Dispensary 660'



Benefits



Outside setting



bar area

Interior

- **Receive up to guest(s) :**

9 person(s)

- **Interior layout :**

11 Room(s), 5 bedroom(s), 3 bathroom, 3 shower room, 3 washroom, living room, shared kitchen facilities, dining room, cosy nook, tv den, bar area, games room, walk-in closet, laundry room

- **Sleeps - bed(s) :**

2 full bed(s), 5 twin bed(s), 2 baby cradle

- **Guest facilities :**

Fireplace, T.V., book collection, phone, wardrobe, Hanging wardrobe, hair dryer, heated towel rail, electric heating, Drapes, Double glazed, intruder alarm, fire alarm

- **Appliances :**

Crockery/flatware, kitchen utensils, electric espresso coffee maker, toaster, gaz stove, oven, micro-wave oven, extractor hood, refridgerator, deep freeze, dish washer, washing machine, clothes dryer, vacuum cleaner, iron, ironing board

Exterior

- **Outside accommodation :**

Sundeck 1,600 Sq.ft.

- **Outside setting :**

Private courtyard, enclosed grounds 0.37 acre, yard, lawn

- **Outside amenities :**

BBQ, yard table(s), yard seat(s), parasol, 10 chaise(s) longue(s), outside shower facilities



Outside setting

Services

- **washing :**

Sheets, Towels, Linen, Comforter(s), Comforter(s), Pillows

- **Single family home :**

Serviced, Yard/swimming pool maintenance, Parking

- **Personnel :**

Staff, Laundry

For your guidance

- **For your guidance**

Kids welcome

Pets accepted under certain conditions (ask the owner)

Cell phone network coverage, personal transport advisable

Water : hot/cold

Local voltage supply : 220-240V / 50Hz

Electricity supply : mains

- **Handicapped people welcome**

Wheelchair access

Fitted out for the disabled : mobility



Exterior facilities at guests disposal

Photo album - 1



Outside setting



Benefits



games room



bar area



Exterior facilities at guests disposal

Photo album - 2



Outside setting



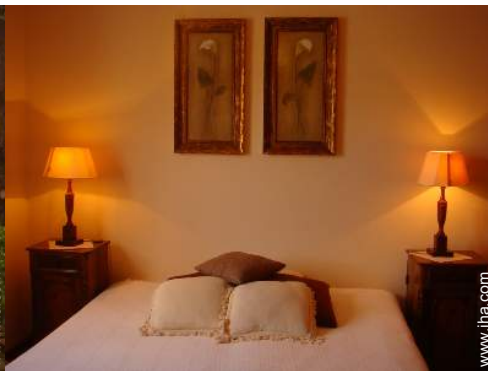
yard



Outside setting



Outside at the guests disposal



full bed(s)



bedroom



twin bed(s)



twin bed(s)



Guest facilities



view from the bedroom



View



living room

Photo album - 3



dining room



kitchen



BBQ



BBQ



façade



private courtyard



leisure pursuits nearby



drugstore



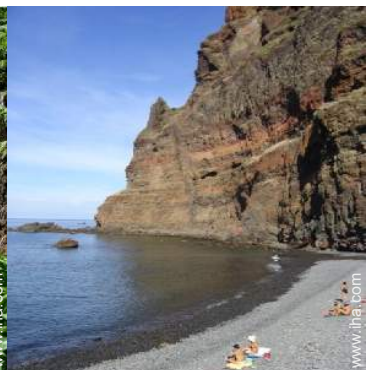
sandy beach



golf



nature reserve



shingle beach

Location & Access



GPS coordinates in degrees, minutes, seconds: Latitude 32° 41'51.37"N - Longitude 17°6'59"W ([Dwelling](#))

Address

→ Rua de Santa Teresinha no. 4
9360 Canhas

• [Airport Madeira Funchal](#)

→ Funchal, Madeira Island, Madeira Islands
→ Distance : 22,5mi.
→ Time : 45'

• [Freeway \(exit\) Via Expresso](#)

→ Ponta do Sol, Madeira Island, Madeira Islands
→ Distance : 1.5mi.
→ Time : 10'

- Ponta do Sol : Distance : 1.5mi.
- Ribeira Brava : Distance : 3mi.
- Calheta : Distance : 4.5mi.

Contact

Last Name	Mr. CABRAL DE NORONHA Tito
Address	Rua de Santa Teresinha no. 4
City	9350-310 PONTA DO SOL
Country	Portugal
Cell phone #	+351 963337153 (Portugal)
Fax #	+351 291766337 (Portugal)

Spoken languages



Gîte - Self Catering
Madeira Island - Madeira Islands
"Casa do Retiro"

[Book now](#)

Availability calendar - from : may 2012

May	Tu	W	Th	F	Sa	Su	M	Tu	W	Th	F	Sa	Su	M	Tu	W	Th	F	Sa	Su	M	Tu	W	Th	F	Sa	Su	M	Tu	W	Th	
2012	1	2	3	4	5	6	7	8	9	10	11	12	13	14	15	16	17	18	19	20	21	22	23	24	25	26	27	28	29	30	31	

June	F	Sa	Su	M	Tu	W	Th	F	Sa	Su	M	Tu	W	Th	F	Sa	Su	M	Tu	W	Th	F	Sa							
2012	1	2	3	4	5	6	7	8	9	10	11	12	13	14	15	16	17	18	19	20	21	22	23	24	25	26	27	28	29	30
	-	-	-	-	-	-	-	-	-	-	-	-	-	-	-	-	-	-	-	-	-	-	-	-	-	-	-	-	-	-

Jul	Su	M	Tu	W	Th	F	Sa	Su	M	Tu	W	Th	F	Sa	Su	M	Tu	W	Th	F	Sa	Su	M	Tu							
2012	1	2	3	4	5	6	7	8	9	10	11	12	13	14	15	16	17	18	19	20	21	22	23	24	25	26	27	28	29	30	31
	-	-	-	-	-	-	-	-	-	-	-	-	-	-	-	-	-	-	-	-	-	-	-	-	-	-	-	-	-	-	

Reserved
 Mid season
 Low season
 High season

[Month : Next >>](#)

Rental rates - Gîte - Self Catering - Country House - 9 Person(s)

Rates	Night	Weekend	week	2 weeks	Month
■ Low season	\$117 * > 7	\$327 *	\$819 *	-	\$3512 *
■ Mid season	\$123 * > 7	\$345 *	\$863 *	-	\$3701 *
■ High season	\$130 * > 7	\$363 *	\$908 *	-	\$3889 *

> Minimum Night

[Book now](#)





games room



bar area



Exterior facilities at guests disposal



Outside setting



Benefits

Booking conditions

• **Reservation**

→ Payment made at time of reservation :
30% of rental sum
→ Payment balance :
on return of keys

• **Rental**

→ Cleaning charge on departure included

Accepted methods of payment

• Bank transfer (wire) • Cash

[▶ Book now](#)

[▶ Contact the owner](#)

Contact directly the property owners

www.iha.com
Advert No.
71249
>> Book now <<

Contact

Last Name	Mr. CABRAL DE NORONHA Tito
Address	Rua de Santa Teresinha no. 4
City	9350-310 PONTA DO SOL
Country	Portugal
Cell phone #	+351 963337153 (Portugal)
Fax #	+351 291766337 (Portugal)

Spoken languages   

* Converted at the rate indicated : €100 = \$125.87 = £80.11

Advert No. 71249

www.iha.com



Internet
Holiday
Ads



Internet
Holiday
Ads

