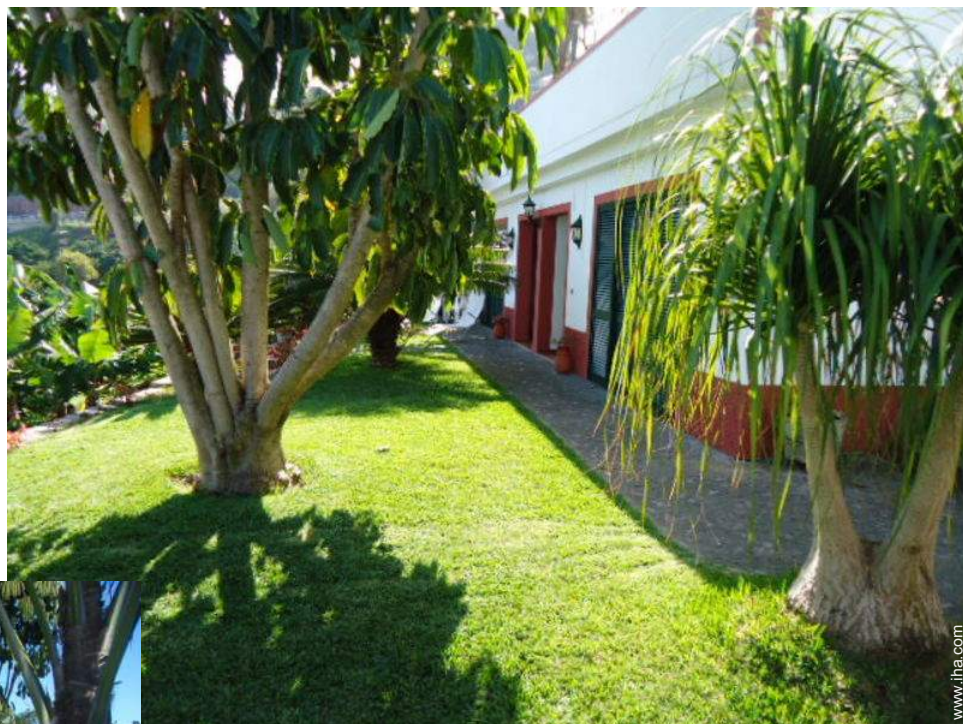


Vacation rental Porto da Cruz "Studio Idalina"



Studio Flat first floor, shared entrance, in(on) a(an) Country House single storey

Setting : foot-in-the water

Capacity : 2 person(s)

Porto da Cruz - Madeira Island

Madeira Islands

Advert No. 54289

www.iha.com



Internet
Holiday
Ads



Internet
Holiday
Ads



Vacation rental



Studio Flat first floor, shared entrance, in (on) a(an) Country House single storey

- **Ideal for all age groups**
- **View :** panoramic, unobscured, not overlooked, sea/ocean, garden/park, village
- **Setting :** foot-in-the water

Goodies

- **Parking :**
Parking uncovered : 3 internal



façade

Surroundings & location



Ocean



Fishing

Leisure

- **Leisure activities less than 12 miles :**

Scuba diving, surfing, windsurfing, golf, tennis, squash, pathway/broadwalk, rappel, hang-gliding, paragliding, boat trips, horse trekking, basketball, paintball, fishing

- **Attractions and relaxation :**

Bar/pub, restaurant

Surroundings

- **Locality :**

- Sea/ocean 660'
- Sandy beach 660'
- Public swimming pool 660'
- Public tennis court 9mi.
- 18 hole golf course 12.5mi.
- Windsurfing spots 6mi.
- Surfing spots 660'
- Forest 3mi.
- Mountain range 165'
- Marina 6mi.

- **Amenities :**

- Village center <165'
- Bus stop / bus station <165'
- Bike/mountain bike hire 9mi.
- Scooter/motorbike hire 6mi.
- Car rental 9mi.
- Scuba diving material hire 9mi.
- Breadstore 330'
- Caterer 165'
- Local stores 165'
- Supermarket 165'
- Hairdressing salon 165'
- Internet cafe 165'
- Mail office 165'
- Bank <165'
- ATM <165'
- Drugstore 330'
- Doctor <165'
- Nurse <165'
- Hospital 18.5mi.
- Dispensary <165'



Outside setting





overall view

Exterior

- **Outside accommodation :**
Terrace
- **Outside setting :**
Yard 323 Sq.ft., landscaped yard, tropical garden, lawn, orchard, kitchen garden
- **Outside amenities :**
Yard table(s), 3 yard seat(s), parasol, 2 chaise(s) longue(s), 2 sun recliner(s)



Kitchen Area

Interior

- **Receive up to guest(s) :**
2 person(s) - 2 adults
- **Liveable floor area :**
323 Sq.ft.
- **Interior layout :**
1 bathroom, 1 shower room, 1 washroom, living room
- **Sleeps - bed(s) :**
2 two twin beds, 1 baby cradle
- **Guest facilities :**
T.V., cable/satellite, wardrobe, cupboard, Hanging wardrobe, electric heating, remote controlled gates
- **Appliances :**
Crockery/flatware, kitchen utensils, electric coffee maker, toaster, electric stove, extractor hood, refrigerator, deep freeze

Services

- **washing :**
Sheets (2 X / per week), Towels (2 X / per week), Linen (2 X / per week), Comforter(s) (2 X / per week), Pillows (2 X / per week)
- **Single family home :**
Serviced (2 X / per week), Yard/swimming pool maintenance (2 X / per week), Parking

For your guidance

- **For your guidance**
Kids welcome
Present on site : pets
Cell phone network coverage, personal transport advisable
Water : hot/cold
- **Handicapped people welcome**
Wheelchair access



Photo album - 1



Outside setting



façade



overall view



Photo album - 2



Kitchen Area

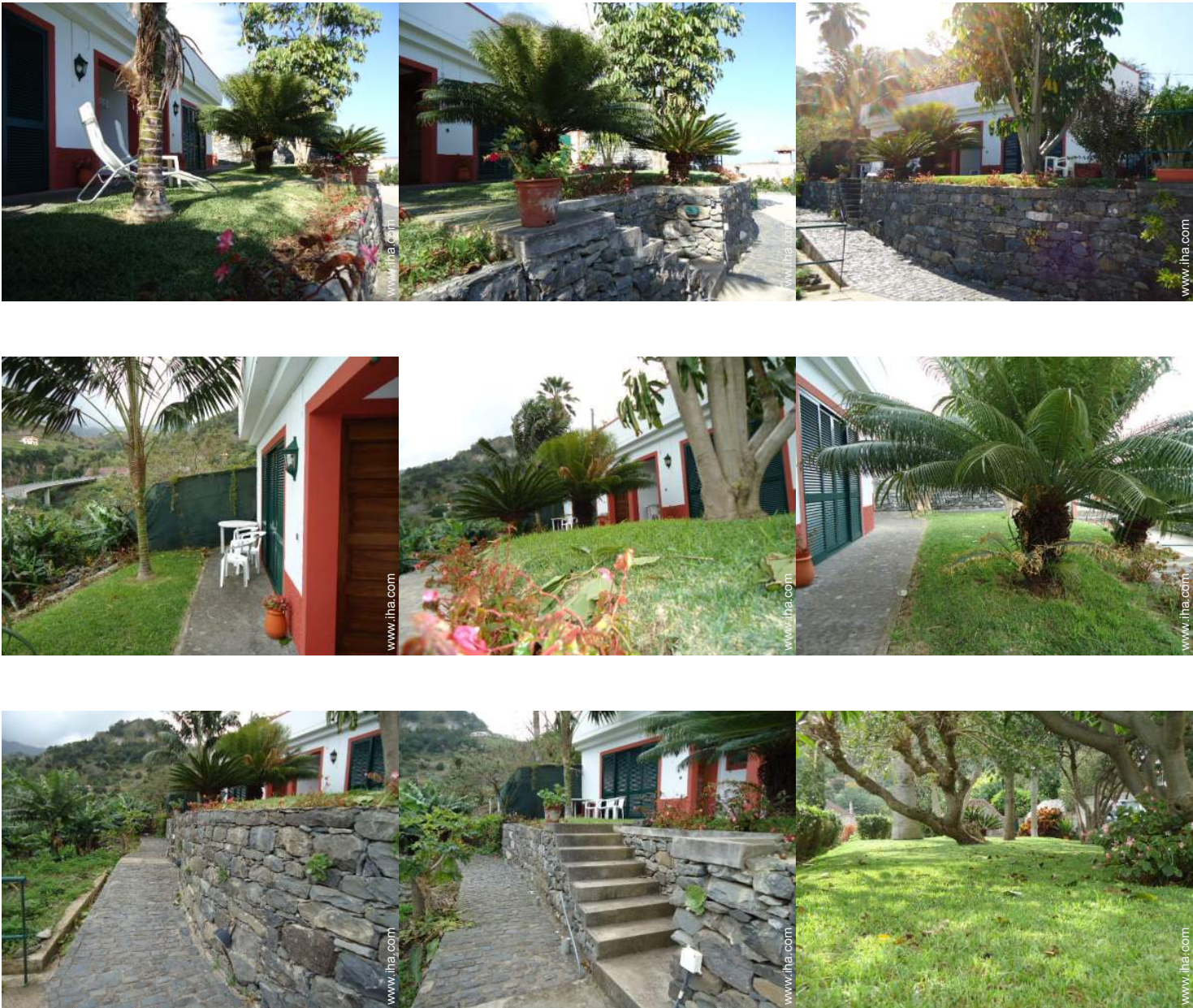


bathroom



Ocean

Photo album - 3



Advert No. 54289

www.iha.com



Internet
Holiday
Ads



Internet
Holiday
Ads



Location & Access



GPS coordinates in degrees, minutes, seconds: Latitude 32° 46'19.83"N - Longitude 16°49'52.09"W ([Dwelling](#))

Address

→
9225 Porto da Cruz

• **Freeway (exit) Aeroporto**

→ Funchal, Madeira Island, Madeira Islands

→ Distance : 10mi.

→ Time : 15'

- Machico : Distance : 6mi.
- Funchal : Distance : 18.5mi.
- Santa Cruz : Distance : 8.7mi.

Contact

Last Name	Mr. MENDES José Abel
Address	Casas Próximas- Porto da Cruz
City	9225-050 MADEIRA- PORTO DA CRUZ
Country	Portugal
Cell phone #	+351 964218552 (Portugal)
Spoken languages	 



Availability calendar - from : may 2012

May	Tu	W	Th	F	Sa	Su	M	Tu	W	Th	F	Sa	Su	M	Tu	W	Th	F	Sa	Su	M	Tu	W	Th	F	Sa	Su	M	Tu	W	Th	
2012	1	2	3	4	5	6	7	8	9	10	11	12	13	14	15	16	17	18	19	20	21	22	23	24	25	26	27	28	29	30	31	

June	F	Sa	Su	M	Tu	W	Th	F	Sa	Su	M	Tu	W	Th	F	Sa	Su	M	Tu	W	Th	F	Sa							
2012	1	2	3	4	5	6	7	8	9	10	11	12	13	14	15	16	17	18	19	20	21	22	23	24	25	26	27	28	29	30
	-	-	-	-	-	-	-	-	-	-	-	-	-	-	-	-	-	-	-	-	-	-	-	-	-	-	-	-	-	-

Jul	Su	M	Tu	W	Th	F	Sa	Su	M	Tu	W	Th	F	Sa	Su	M	Tu	W	Th	F	Sa	Su	M	Tu							
2012	1	2	3	4	5	6	7	8	9	10	11	12	13	14	15	16	17	18	19	20	21	22	23	24	25	26	27	28	29	30	31
	-	-	-	-	-	-	-	-	-	-	-	-	-	-	-	-	-	-	-	-	-	-	-	-	-	-	-	-	-	-	

■ High season

[Month : Next >>](#)

Rental rates - Studio Flat - 2 Person(s)

Rates	Night	Weekend	week	2 weeks	Month
■ Low season	\$44 *	\$88 *	\$308 *	-	-
■ High season	\$50 *	\$101 *	\$352 *	-	-

[Book now](#)

Booking conditions

- **Reservation**
→ Payment made at time of reservation : 30% of rental sum
→ Payment balance : on return of keys
- **Rental**
→ Service charges included
→ Day tax included
→ Cleaning charge on departure included
→ Anticipated supplement for :
- baby
- supplementary bed(s)

Accepted methods of payment

- Bank transfer (wire)

[▶ Book now](#)

[▶ Contact the owner](#)

Contact directly the property owners

www.ihacom.com
Advert No.
54289
[>> Book now <<](#)

Contact

Last Name Mr. MENDES José Abel
Address Casas Próximas- Porto da Cruz
City 9225-050 MADEIRA- PORTO DA CRUZ
Country Portugal
Cell phone # +351 964218552 (Portugal)
Spoken languages  

* Converted at the rate indicated : €100 = \$125.87 = £80.11
Advert No. 54289

www.ihacom.com



Internet
Holiday
Ads



Internet
Holiday
Ads

