

# Vacation rental Calheta "CALHETA PLAZA"



**Triplex Apartment** 3rd floor,  
seperate entrance, in(on) a(an)  
Modern apartment house/building 3  
floors

Setting : exclusive, serene

Capacity : 6 person(s)

Bedroom(s) : 3

Room(s) : 7

Calheta - Madeira Island

Madeira Islands

Advert No. 60805

[www.iha.com](http://www.iha.com)



Internet  
Holiday  
Ads



Internet  
Holiday  
Ads



### Vacation rental



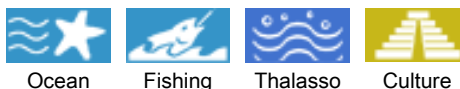
Triplex Apartment 3rd floor, separate entrance, in(on) a(an) Modern apartment house/building 3 floors

- **Ideal for all age groups, senior(s)**
- **View :** panoramic, sea/ocean, mountain, farmland, fantastic sunset
- **Setting :** exclusive, serene
- **Exposure :** South

### Goodies

- **Swimming pool :**  
Shared swimming pool, unusual (length 40', width 13'), illuminated, steps in, step ladder, outside shower (open from 'january 01' till 'december 31')
- **Parking :**  
Covered parking : 2 communal
- **Advantages :**  
Jacuzzi

### Surroundings & location



#### Leisure

- **Leisure activities less than 12 miles :**  
Pedalo, snorkelling, scuba diving, windsurfing, sailing, canyoning, golf, riding school, hiking, hang-gliding, paragliding, boat trips, RC modelling track, ten-pin bowling, paintball, fishing, deep-sea fishing, fishing, spear fishing
- **Attractions and relaxation :**  
Bar/pub, discotheque, restaurant, movie theater, karaoke, park and garden, leisure park, nature reserve, exhibition center, art gallery, museum, theater, local craftstore, cellar and wine tasting, casino, thalassotherapy center, sauna, beauticians, fitness center, Bio farm

#### Surroundings

- **Locality :**
  - Sea/ocean 990'
  - Sandy beach 990'
  - 9 hole golf course 18.5mi.
  - Windsurfing spots 990'
  - Cliff 330'
  - Mountain range 1.85mi.
  - Marina 990'
- **Amenities :**
  - Village center 330'
  - Bus stop / bus station <165'
  - Bus pick up point beach <165'
  - Car rental 990'
  - Boat rental 990'
  - Scuba diving material hire 990'
  - Breadstore <165'
  - Caterer 330'
  - Local stores 330'
  - Supermarket 990'
  - High class retailers 15.5mi.
  - Hairdressing salon 330'
  - Internet cafe 330'
  - Mail office 330'
  - Bank 330'
  - ATM 330'
  - Drugstore 330'
  - Doctor 330'
  - Nurse 660'
  - Hospital 660'
  - Dispensary 660'



living room



panorama



view from the veranda



kitchen

### Interior

- **Receive up to guest(s) :**  
6 person(s) - 4 adults, 2 kids
- **Liveable floor area :**  
1,600 Sq.ft.
- **Interior layout :**  
7 Room(s), 3 bedroom(s), 2 bathroom, 1 shower room, 1 washroom, living room 430 Sq.ft., large seperate kitchen, dining room, tv den, patio, veranda
- **Sleeps - bed(s) :**  
1 queen-size bed(s), 4 twin bed(s)
- **Guest facilities :**  
Elevator, T.V., DVD player, t.v points, cable/satellite, wifi (wireless internet access), wardrobe, Hanging wardrobe, power shower, Drapes, Double glazed, entry phone system, fire alarm, remote controlled gates
- **Appliances :**  
Crockery/flatware, kitchen utensils, cafetiere, electric kettle, toaster, gaz stove, electric hobs, oven, micro-wave oven, extractor hood, refridgerator, deep freeze, dish washer, washing machine, vacuum cleaner, iron, ironing board

### Exterior

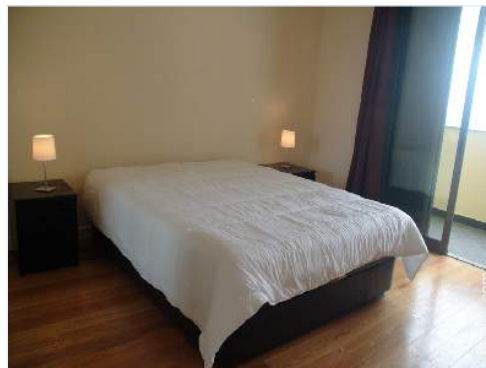
- **Size of grounds :**  
0.75 acre
- **Outside accommodation :**  
Terrace
- **Outside setting :**  
Yard > 0.25 acre, lawn 9,700 Sq.ft.
- **Outside amenities :**  
Chaise(s) longue(s), sun recliner(s), sand box, outside shower facilities, outside water closet facilities

### Services

- **washing :**  
Sheets (1 X / per week), Towels (1 X / per week), Linen (1 X / per week), Comforter(s) (1 X / per week), Pillows (1 X / per week)
- **Single family home :**  
Serviced (1 X / per week), Cleaning on departure, Yard/swimming pool maintenance (2 X / per week), Parking

### For your guidance

- **For your guidance**  
Kids welcome  
Cell phone network coverage, personal transport advisable  
Water : hot/cold  
Local voltage supply : 220-240V / 50Hz  
Electricity supply : mains
- **Handicapped people welcome**  
Wheelchair access  
Fitted out for the disabled : mobility



master bedroom



Photo album - 1



view from the veranda



panorama



living room



kitchen



master bedroom

Route map



Location & Access



GPS coordinates in degrees, minutes, seconds: Latitude 32° 43'33"N - Longitude 17°10'44"W (Dwelling)

Address

→ Rua Vale de Amores  
9370 Calheta

• Freeway (exit) Calheta

→ Calheta, Madeira Island, Madeira Islands  
→ Distance : 0.62mi.  
→ Time : 10'

• Funchal : Distance : 16mi.

Contact

Last Name	Mr. RAMOS Martin
Address	Rua Vale de Amores
City	9370-111 CALHETA
Country	Portugal
Cell phone #	+351 966973780 (Portugal)

Spoken languages

Vacation rental  
Madeira Island - Calheta  
"CALHETA PLAZA"

7  
[Book now](#)

Availability calendar - from : may 2012

May	Tu	W	Th	F	Sa	Su	M	Tu	W	Th	F	Sa	Su	M	Tu	W	Th	F	Sa	Su	M	Tu	W	Th	F	Sa	Su	M	Tu	W	Th	
2012	1	2	3	4	5	6	7	8	9	10	11	12	13	14	15	16	17	18	19	20	21	22	23	24	25	26	27	28	29	30	31	

June	F	Sa	Su	M	Tu	W	Th	F	Sa	Su	M	Tu	W	Th	F	Sa	Su	M	Tu	W	Th	F	Sa							
2012	1	2	3	4	5	6	7	8	9	10	11	12	13	14	15	16	17	18	19	20	21	22	23	24	25	26	27	28	29	30
	-	-	-	-	-	-	-	-	-	-	-	-	-	-	-	-	-	-	-	-	-	-	-	-	-	-	-	-	-	-

Jul	Su	M	Tu	W	Th	F	Sa	Su	M	Tu	W	Th	F	Sa	Su	M	Tu	W	Th	F	Sa	Su	M	Tu							
2012	1	2	3	4	5	6	7	8	9	10	11	12	13	14	15	16	17	18	19	20	21	22	23	24	25	26	27	28	29	30	31
	-	-	-	-	-	-	-	-	-	-	-	-	-	-	-	-	-	-	-	-	-	-	-	-	-	-	-	-	-	-	

■ Low season ■ High season

[Month : Next >>](#)

Rental rates - Triplex Apartment - 6 Person(s)

Rates	Night	Weekend	week	2 weeks	Month
<span style="color: green;">■</span> Low season	-	-	\$409 *	-	-
<span style="color: blue;">■</span> Mid season	-	-	\$535 *	-	-
<span style="color: red;">■</span> High season	-	-	\$623 *	-	-
<span style="color: magenta;">■</span> Festive specials	-	-	\$629 *	-	-
<span style="color: yellow;">■</span> Promotional period	-	-	\$497 *	-	-

[Book now](#)





living room



kitchen



master bedroom



view from the veranda



panorama

### Booking conditions

#### • Reservation

→ Payment made at time of reservation :  
20% of rental sum  
→ Payment balance :  
2 weeks before the stay

#### • Rental

→ Service charges included  
→ Day tax included  
→ Cleaning charge on departure included

### Accepted methods of payment

• Visa/Delta/Electron • Bank transfer  
(wire) • Cash

▶ [Book now](#)

▶ [Contact the owner](#)

Contact directly the property owners

[www.iha.com](http://www.iha.com)  
Advert No.  
60805  
>> [Book now](#) <<

### Contact

Last Name Mr. RAMOS Martin  
Address Rua Vale de Amores  
City 9370-111 CALHETA  
Country Portugal  
Cell phone # +351 966973780  
(Portugal)

Spoken  
languages



\* Converted at the rate indicated : €100 = \$125.87 = £80.11

Advert No. 60805

[www.iha.com](http://www.iha.com)



Internet  
Holiday  
Ads



Internet  
Holiday  
Ads

