

Vacation rental Marchigiana Coast "Contea dei Ciliegi"



Apartment-Flat first floor, separate entrance, in(on) a(an) Park

Setting : natural, rural

Capacity : 4 person(s)

Bedroom(s) : 1

Pedaso - Fermo Province (FM) - Marche

Italy

Advert No. 6119

www.iha.com



Internet
Holiday
Ads



Internet
Holiday
Ads



Vacation rental



Apartment-Flat first floor, separate entrance, in(on) a(an) Park

- View : panoramic, not overlooked, sea/ocean, country side, garden/park
- Setting : natural, rural
- Exposure : South-east

Goodies

- Swimming pool :
Shared swimming pool
- Parking :
Covered parking : 1 carport

Surroundings & location



Leisure

- Leisure activities less than 12 miles :
Bathing, pedalo, snorkelling, scuba diving, surfing, windsurfing, sailing, kite surfing, tennis, riding school, coastal/forest paths, hiking, rock climbing, mountain bike (path), boat trips, horse trekking, mini-golf, rollerblade/rollerskate (circuit), skate board (ramps), ten-pin bowling, basketball, volleyball, hunting, fishing, deep-sea fishing, fishing, spear fishing, pétanque field
- Supervised :
Sailing school, dive school, tennis school
- Attractions and relaxation :
Bar/pub, discotheque, restaurant, movie theater, open air summer movie theater, karaoke, park and garden, leisure park, nature reserve, exhibition center, art gallery, historical site, museum, theater, festivals, antiques & bric-a-brac, local craftstore, cellar and wine tasting, casino, race track, thermal baths, sauna, steam baths, health spa, beauticians, fitness center

Surroundings

- Locality :
 - Sea/ocean 0.5mi.
 - Sandy beach 0.5mi.
 - Forest 660'
- Amenities :
 - Downtown 0.3mi.



park and garden



park and garden



panorama



panorama

Interior

- **Receive up to guest(s) :**
4 person(s)
- **Interior layout :**
1 bedroom(s)
- **Sleeps - bed(s) :**
1 full bed(s), 1 sleeper sofa(s) 2 pers
- **Guest facilities :**
T.V., wifi (wireless internet access), wardrobe, fly screens, Drapes
- **Appliances :**
Crockery/flatware, refridgerator

Exterior

- **Outside accommodation :**
Terrace
- **Outside setting :**
Landsaped yard > 0.25 acre
- **Outside amenities :**
2 sun recliner(s)

Services

- **washing :**
Sheets (1 X / per week), Towels, Comforter (s), Pillows
- **Single family home :**
Parking

For your guidance

- **For your guidance**
Kids welcome
Pets accepted under certain conditions (ask the owner)
Present on site : farm animals
Non smoking rental, cell phone network coverage
Water : hot/cold
- **Handicapped people welcome**
Wheelchair access

Floor plan



Photo album - 1



View



panorama



park and garden

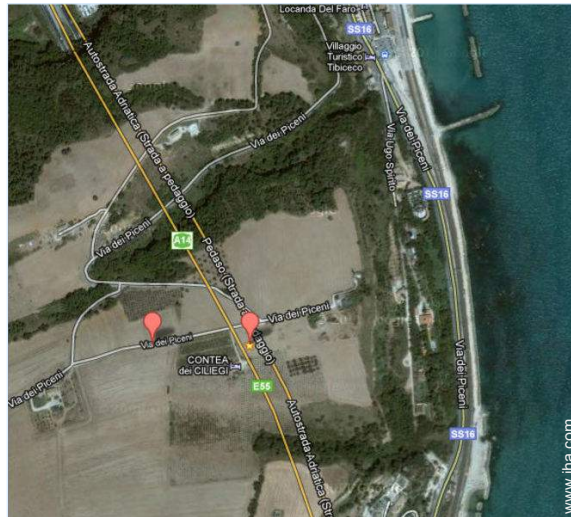


park and garden



panorama

Route map



Location & Access



GPS coordinates in degrees, minutes, seconds: Latitude 43° 5'21"N - Longitude 13°50'29"E ([Dwelling](#))

Address

→ Via dei Piceni 14
63016 Pedaso

● **Freeway (exit) A14 Pedaso**

→ Pedaso, Fermo Province, Marche, Italy

→ Distance : 1.25mi.

→ Time : 5'

- Fermo : Distance : 7,5mi.
- San Benedetto del Tronto : Distance : 10,5mi.
- Grottammare : Distance : 7,5mi.

Contact

Last Name	Mr. BRUTI Luigi
Address	Via Giovanni XXIII,5
City	63827 PEDASO
Country	Italy
Phone #	+39 0734933405 (Italy)
Fax #	+39 0734933039 (Italy)

Spoken languages  

Vacation rental
 Marche - Italy
"Contea dei Ciliegi"

7
[Book now](#)

Availability calendar - from : may 2012

May	Tu	W	Th	F	Sa	Su	M	Tu	W	Th	F	Sa	Su	M	Tu	W	Th	F	Sa	Su	M	Tu	W	Th	F	Sa	Su	M	Tu	W	Th	
2012	1	2	3	4	5	6	7	8	9	10	11	12	13	14	15	16	17	18	19	20	21	22	23	24	25	26	27	28	29	30	31	

June	F	Sa	Su	M	Tu	W	Th	F	Sa	Su	M	Tu	W	Th	F	Sa	Su	M	Tu	W	Th	F	Sa							
2012	1	2	3	4	5	6	7	8	9	10	11	12	13	14	15	16	17	18	19	20	21	22	23	24	25	26	27	28	29	30
	-	-	-	-	-	-	-	-	-	-	-	-	-	-	-	-	-	-	-	-	-	-	-	-	-	-	-	-	-	-

Jul	Su	M	Tu	W	Th	F	Sa	Su	M	Tu	W	Th	F	Sa	Su	M	Tu	W	Th	F	Sa	Su	M	Tu							
2012	1	2	3	4	5	6	7	8	9	10	11	12	13	14	15	16	17	18	19	20	21	22	23	24	25	26	27	28	29	30	31
	-	-	-	-	-	-	-	-	-	-	-	-	-	-	-	-	-	-	-	-	-	-	-	-	-	-	-	-	-	-	

■ High season

[Month : Next >>](#)

Rental rates - Apartment-Flat - 4 Person(s)

Rates	Night	Weekend	week	2 weeks	Month
■ Low season	-	-	\$566 * (Saturday)	-	-
■ Mid season	-	-	\$818 * (Saturday)	-	-
■ High season	-	-	\$1196 * (Saturday)	-	-

(Check-in day)

[Book now](#)





park and garden

panorama



View



panorama



park and garden

Booking conditions

• **Rental**

→ Service charges included

Accepted methods of payment

• Visa/Delta/Electron • International Money Order • Switch/Maestro • Bank transfer (wire) • MasterCard/EuroCard • Diners Club • PayPal

► [Book now](#)

► [Contact the owner](#)

Contact directly the property owners

www.ihacom.com
Advert No.
6119
>> [Book now](#) <<

Contact

Last Name	Mr. BRUTI Luigi
Address	Via Giovanni XXIII,5
City	63827 PEDASO
Country	Italy
Phone #	+39 0734933405 (Italy)
Fax #	+39 0734933039 (Italy)

Spoken languages



* Converted at the rate indicated : €100 = \$125.87 = £80.11

Advert No. 6119

www.ihacom.com



>> VACATION RENTALS

Internet
Holiday
Ads



Internet
Holiday
Ads



DIRECT BY OWNERS