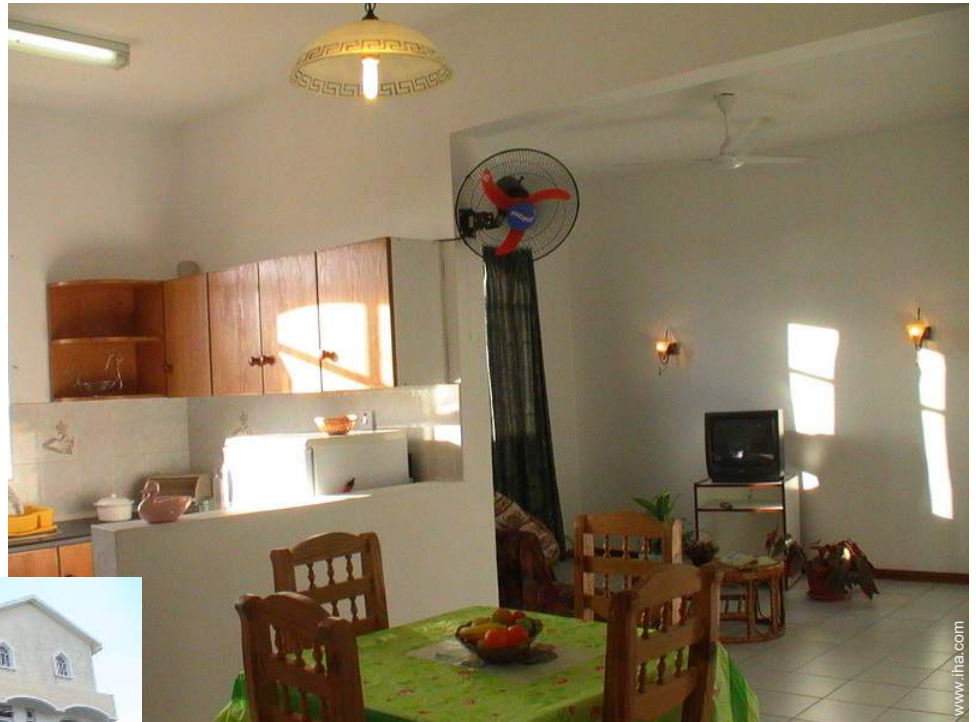


Vacation rental Mont Choisy "Résidence Impala - The Impala Mauritius"



Apartment-Flat 3rd floor, separate entrance, in(on) a(an) Private estate 2 floors

Setting : luxurious, tranquil

Capacity : 2 person(s)

Bedroom(s) : 1

Room(s) : 3



Meublés de Tourisme (4 stars)
Naturism

Mont Choisy - Mauritius Island

Mauritius

Advert No. 1419

www.iha.com



Internet
Holiday
Ads



Internet
Holiday
Ads



DIRECT BY OWNERS

Vacation rental



Apartment-Flat 3rd floor, separate entrance, in(on) a(an) Private estate 2 floors

- **Ideal for couples, senior(s)**
- **View :** panoramic, sea/ocean, mountain, country side, forest, fantastic sunset
- **Setting :** luxurious, tranquil
- **Exposure :** North-west

Goodies

- **Parking :**
 Parking uncovered : 1 internal, 2 reserved stall, 10 off road
- **baby equipment :**
 High chair



master bedroom

Surroundings & location



Leisure

- **Leisure activities less than 12 miles :**
 Bathing, pedalo, snorkelling, scuba diving, Scuba diving (Standard diving dress), banana boat, water skiing, jet ski, surfing, windsurfing, sailing, golf, tennis, riding school, pathway/broadwalk, hiking, sand yachting, parascending, parachuting, paragliding, boat trips, horse trekking, ATV/Quad Bike, hunting, safari, fishing, deep-sea fishing, fishing
- **Supervised :**
 Dive school, riding school
- **Attractions and relaxation :**
 Bar/pub, discotheque, restaurant, movie theater, park and garden, leisure park, zoo/ animal park, sea world, nature reserve, exhibition center, art gallery, historical site, museum, theater, festivals, local craftstore, casino, race track, health spa, beauticians, fitness center

Surroundings

- **Locality :**
 - Sea/ocean 660'
 - Sandy beach 660'
 - Rocky beach 660'
 - Public swimming pool 4.5mi.
 - 9 hole golf course 6mi.
 - Windsurfing spots 25mi.
 - Surfing spots 660'
 - Watersports centre
- **Amenities :**
 - Kindergarten 1.85mi.
 - Village center 165'
 - Downtown 1.5mi.
 - Bus stop / bus station 0.5mi.
 - Bike/mountain bike hire 330'
 - Scooter/motorbike hire 330'
 - Car rental <165'
 - Scuba diving material hire
 - Household linens for hire/laundry services <165'
 - Breadstore 330'
 - Local stores 165'
 - Supermarket 165'
 - High class retailers 0.62mi.
 - Hairdressing salon 660'
 - Internet cafe <165'
 - Mail office 1.85mi.
 - Bank 330'
 - ATM 330'
 - Drugstore 0.93mi.
 - Doctor 0.62mi.
 - Nurse 3mi.
 - Hospital 1.85mi.
 - Dispensary 3mi.



Private estate



façade



king-size bed(s)

Interior

- **Receive up to guest(s) :**

2 person(s) - 2 adults

- **Liveable floor area :**

970 Sq.ft.

- **Interior layout :**

3 Room(s), 1 bedroom(s), sleeping den, 1 bathroom, 1 shower room, 1 washroom, living room 323 Sq.ft., sitting room 323 Sq. ft., american style kitchen, dining room, dining area, tv den, reception hall, office, laundry room, patio, veranda

- **Sleeps - bed(s) :**

1 king-size bed(s), 1 sleeper sofa(s) 1 pers, 1 baby cradle, 2 possible additional sleeping supplementary

- **Guest facilities :**

T.V., hi-fi system, DVD player, book collection, t.v points, phone, fax, computer, cable/satelite, internet access, high speed internet access, wifi (wireless internet access), wardrobe, cupboard, Hanging wardrobe, safe deposit box, radio alarmclock, hair dryer, partly air-conditioned, fully air-conditioned, mobile cool air fan, ceiling paddle fan, Drapes, Double glazed, intruder alarm

- **Appliances :**

Crockery/flatware, kitchen utensils, cafetiere, electric coffee maker, electric kettle, toaster, food processor, fondue set, meat broiler, gaz stove, electric stove, electric hobs, oven, mini-oven, micro-wave oven, extractor hood, refridgerator, deep freeze, washing machine, clothes dryer, vacuum cleaner, iron, ironing board

Exterior

- **Size of grounds :**

4,300 Sq.ft.

- **Outside accommodation :**

Terrace 65 Sq.ft., covered terrace 65 Sq.ft., roof terrace 530 Sq.ft., balcony 65 Sq.ft.

- **Outside setting :**

Enclosed grounds 6,500 Sq.ft., yard 215 Sq. ft., ornamental lake, fountain

- **Outside amenities :**

BBQ, gaz BBQ, yard table(s), yard seat(s), yard seated area, 2 chaise(s) longue(s)



dining room

Services

- **washing :**

Sheets (2 X / per week), Towels (2 X / per week), Linen (2 X / per week), Beach towels supplement (+\$13 *), Comforter(s) (2 X / per week), Comforter(s) (2 X / per week), Pillows (2 X / per week)

- **Single family home :**

Serviced (7 X / per week), Cleaning on departure, Caretaker/concierge, Parking, Airport transfers supplement (+\$44 *)

- **Personnel :**

Staff, Chef(s) supplement (+\$19 *), Chauffeur supplement (+\$19 *), Laundry supplement (2 X / per week +\$31 *), Baby sitting supplement (+\$19 *), Beauty treatments supplement (+\$31 *), Massage supplement (+\$31 *), Guide supplement (+\$19 *)

- **Restauration :**

Breakfast supplement (+\$13 *), Locally produced meals supplement (7 X / per week +\$19 *), Picnic basket supplement

For your guidance

- **For your guidance**

Kids welcome
Cell phone network coverage
Water : hot/cold
Local voltage supply : 220-240V / 50Hz
Electricity supply : mains



tv den

Photo album - 1



façade



Private estate



master bedroom



king-size bed(s)



tv den

Photo album - 2



dining room

american style kitchen

kitchen utensils



Appliances

bathroom

office



safe deposit box

view from the balcony

Your hosts



Fishing

view from the kitchen

Photo album - 3



view of the sunset



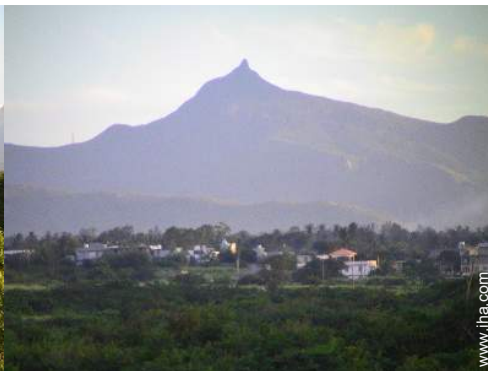
view from the sitting-room



north-easterly view



view over the mountain



view from the bedroom



view from the bedroom



ornamental lake



sandy beach



Present on site



yard

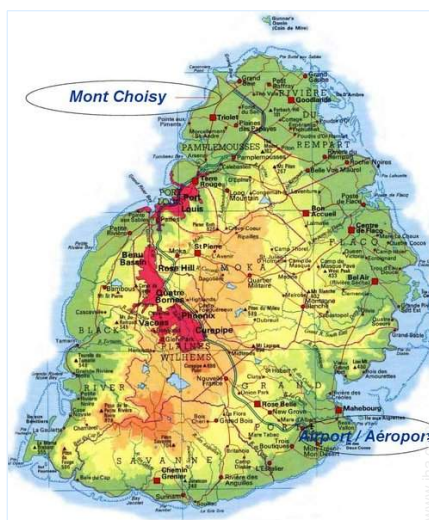


Your hosts



Your hosts

Route map



Location & Access



GPS coordinates in degrees, minutes, seconds: Latitude 20° 0'57.6"S - Longitude 57°32'60"E (City)

Address

→ 164 Trou aux Biches

• [Airport Sir Seewoosagur Ramgoolam](#)

→ Plaisance, Mauritius Island, Mauritius

→ Distance : 25mi.

→ Time : 1h15'

• [Sea port Port Louis](#)

→ Port Louis, Mauritius Island, Mauritius

→ Distance : 12.5mi.

→ Time : 40'

• [Bus station Mon Choisy Trou aux Biches](#)

→ Mont Choisy, Mauritius Island, Mauritius

→ Distance : 330'

→ Time : 1h30'

• Grand Baie : Distance : 1.85mi.

• Trou aux Biches : Distance : 660'

• Pamplemousses : Distance : 6mi.

Contact

Last Name JHEELAN Daniel & ASHOK
IMPALAMAURITIUS
IMPALAILEMAURICE

Address 164 Mon Choisy

City 9999 MON CHOISY

Country Mauritius

Phone # +230 26 55 009 (Mauritius)

Cell phone # +230 73 57 327 (Mauritius)

Fax # +230 26 56 747 (Mauritius)

Spoken languages



Vacation rental
Mauritius Island - Mauritius
"Résidence Impala - The Impala Mauritius"

8
[Book now](#)

Availability calendar - from : may 2012

May	Tu	W	Th	F	Sa	Su	M	Tu	W	Th	F	Sa	Su	M	Tu	W	Th	F	Sa	Su	M	Tu	W	Th	F	Sa	Su	M	Tu	W	Th	
2012	1	2	3	4	5	6	7	8	9	10	11	12	13	14	15	16	17	18	19	20	21	22	23	24	25	26	27	28	29	30	31	

June	F	Sa	Su	M	Tu	W	Th	F	Sa	Su	M	Tu	W	Th	F	Sa	Su	M	Tu	W	Th	F	Sa							
2012	1	2	3	4	5	6	7	8	9	10	11	12	13	14	15	16	17	18	19	20	21	22	23	24	25	26	27	28	29	30
	-	-	-	-	-	-	-	-	-	-	-	-	-	-	-	-	-	-	-	-	-	-	-	-	-	-	-	-	-	-

Jul	Su	M	Tu	W	Th	F	Sa	Su	M	Tu	W	Th	F	Sa	Su	M	Tu	W	Th	F	Sa	Su	M	Tu							
2012	1	2	3	4	5	6	7	8	9	10	11	12	13	14	15	16	17	18	19	20	21	22	23	24	25	26	27	28	29	30	31
	-	-	-	-	-	-	-	-	-	-	-	-	-	-	-	-	-	-	-	-	-	-	-	-	-	-	-	-	-	-	

[Month : Next >>](#)

Rental rates - Apartment-Flat - 2 Person(s)

Rates	Night	Weekend	week	2 weeks	Month
 Low season	\$45 * > 2	\$91 *	\$317 *	\$629 *	\$1259 *
 Mid season	\$45 * > 2	\$91 *	\$317 *	\$629 *	\$1259 *
 High season	\$45 * > 2	\$91 *	\$317 *	\$634 *	\$1359 *

> Minimum Night

[Book now](#)





master bedroom



king-size bed(s)



tv den



façade



Private estate

Booking conditions

• **Reservation**

- Payment made at time of reservation : 25% of rental sum
- Payment balance : on return of keys
- Deposit required

• **Rental**

- Service charges included
- Day tax included
- Cleaning charge on departure included
- Anticipated supplement for : - supplementary bed(s)

[▶ Book now](#)

[▶ Contact the owner](#)

Accepted methods of payment

- International Money Order
- Bank transfer (wire)
- Cash

Contact directly the property owners

www.iha.com

Advert No.

1419

[>> Book now <<](#)

Contact

Last Name	JHEELAN Daniel & ASHOK IMPALAMAURITIUS IMPALAILEMAURICE
Address	164 Mon Choisy
City	9999 MON CHOISY
Country	Mauritius
Phone #	+230 26 55 009 (Mauritius)
Cell phone #	+230 73 57 327 (Mauritius)
Fax #	+230 26 56 747 (Mauritius)

Spoken languages



* Converted at the rate indicated : €100 = \$125.87 = £80.11

Advert No. 1419

www.iha.com

