

# Luxury vacation rental Green Coast "Casa do Carvalhido"



Luxury Residence, detached, 2 floors, separate entrance, in(on) a(an) Charming Property

Setting : urban, romantic

Capacity : 6 person(s)

Bedroom(s) : 3

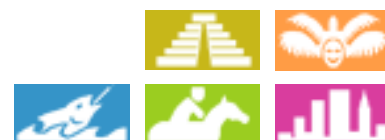
Room(s) : 6

Porto - Porto District - North

Portugal

Advert No. 14821

[www.iha.com](http://www.iha.com)



Internet  
Holiday  
Ads



Internet  
Holiday  
Ads



Luxury vacation rental



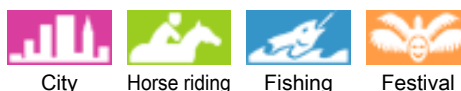
Luxury Residence, detached, 2 floors, separate entrance, in(on) a(an) Charming Property

- **Ideal for large families, senior(s)**
- **View :** garden/park, city, street/avenue
- **Setting :** urban, romantic

Goodies

- **Parking :**  
 Covered parking : 1 individual stall locked, 2 communal
- **baby equipment :**  
 High chair, infant tub, baby potty, stroller

Surroundings & location



Culture

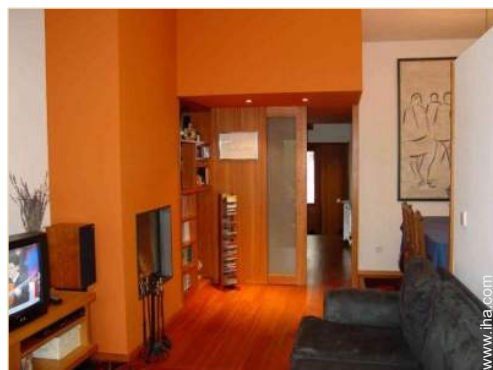
Leisure

- **Leisure activities less than 12 miles :**  
 Bathing, pedalo, jet ski, surfing, sailing, canoeing, golf, tennis, riding school, pathway/broadwalk, coastal/forest paths, mountain bike (path), boat trips, mini-golf, rollerblade/rollerskate (circuit), ten-pin bowling, fishing
- **Supervised :**  
 Sailing school, tennis school, riding school
- **Attractions and relaxation :**  
 Bar/pub, discotheque, restaurant, movie theater, karaoke, park and garden, leisure park, zoo/animal park, exhibition center, art gallery, historical site, museum, theater, opera house, festivals, antiques & bric-a-brac, local craftstore, cellar and wine tasting, casino, thermal baths, thalassotherapy center, health spa, beauticians, fitness center, Bio farm

Surroundings

- **Locality :**
  - Heated swimming pool 0.3mi.
  - Sea/ocean 3mi.
  - Sandy beach 3mi.
  - Rocky beach 6mi.
  - Sea inlet 6mi.
  - Public swimming pool 0.3mi.
  - Public tennis court 2.5mi.
  - 18 hole golf course 6mi.
  - River rapids 15.5mi.
  - Waterfall 25mi.
  - River 1.25mi.
  - Lake 2.5mi.
  - Mountain range 330'
  - Marina 15.5mi.
- **Amenities :**
  - Downtown <165'
  - Bus stop / bus station <165'
  - Subway station 330'
  - Bus pick up point beach <165'
  - Bike/mountain bike hire 1.85mi.
  - Car rental 0.3mi.
  - Boat rental 1.85mi.
  - Household linens for hire/laundry services <165'
  - Breadstore <165'
  - Caterer <165'
  - Local stores <165'
  - Supermarket 165'
  - High class retailers 660'
  - Hairdressing salon <165'
  - Mail office <165'

- Bank <165'
- ATM <165'
- Drugstore <165'
- Doctor 330'
- Nurse <165'
- Hospital 330'
- Dispensary 330'



Advert No. 14821

[www.iha.com](http://www.iha.com)



>> VACATION RENTALS

Internet  
 Holiday  
 Ads



Internet  
 Holiday  
 Ads



DIRECT BY OWNERS



### Exterior

- **Size of grounds :**  
2,150 Sq.ft.
- **Outside accommodation :**  
Terrace 172 Sq.ft., balcony 65 Sq.ft.
- **Outside setting :**  
Landscaped yard 430 Sq.ft., ornamental lake
- **Outside amenities :**  
2 yard seat(s), trolley on wheels, 1 hammock (s)



### Interior

- **Receive up to guest(s) :**  
6 person(s) - 4 adults, 2 kids
- **Liveable floor area :**  
1,600 Sq.ft.
- **Interior layout :**  
6 Room(s), 3 bedroom(s), 1 bathroom, 1 shower room, 1 washroom, living room 215 Sq.ft., separate kitchen, dining room, cosy nook, tv den, patio, veranda
- **Sleeps - bed(s) :**  
1 full bed(s), 1 queen-size bed(s), 2 two twin beds, 2 baby cradle, 1 possible additional sleeping supplementary
- **Guest facilities :**  
Fireplace, T.V., digital home cinema, hi-fi system, vcr, DVD player, book collection, movie collection, t.v points, cable/satellite, internet access, high speed internet access, wifi (wireless internet access), wardrobe, cupboard, Hanging wardrobe, radio alarmclock, hair dryer, partly air-conditioned, mobile cool air fan, ceiling paddle fan, central heating, electric heating, Glazed in area, Blinds, Double glazed
- **Appliances :**  
Crockery/flatware, kitchen utensils, cafetiere, electric coffee maker, electric espresso coffee maker, electric kettle, toaster, juicer, food processor, fondue set, gaz stove, electric hobs, oven, mini-oven, micro-wave oven, electric fries fryer, extractor hood, refrigerator, deep freeze, ice maker, dish washer, washing machine, vacuum cleaner, iron, ironing board

### Services

- **washing :**  
Sheets (1 X / per week), Towels (1 X / per week), Linen (1 X / per week), Beach towels (1 X / per week), Comforter(s) (1 X / per week), Comforter(s) (1 X / per week), Pillows (1 X / per week)
- **Single family home :**  
Serviced supplement (1 X / per week +\$63 \*), Airport transfers supplement (+\$38 \*)
- **Personnel :**  
Chef(s) supplement (+\$63 \*), Chauffeur supplement (+\$126 \*), Baby sitting supplement (+\$63 \*)
- **Restauration :**  
Guest table supplement (1 X / per week + \$63 \*)

### For your guidance

- **For your guidance**  
Kids welcome  
Pets accepted under certain conditions (ask the owner)  
Cell phone network coverage  
Water : hot/cold  
Local voltage supply : 110-120V / 60Hz



Floor plan

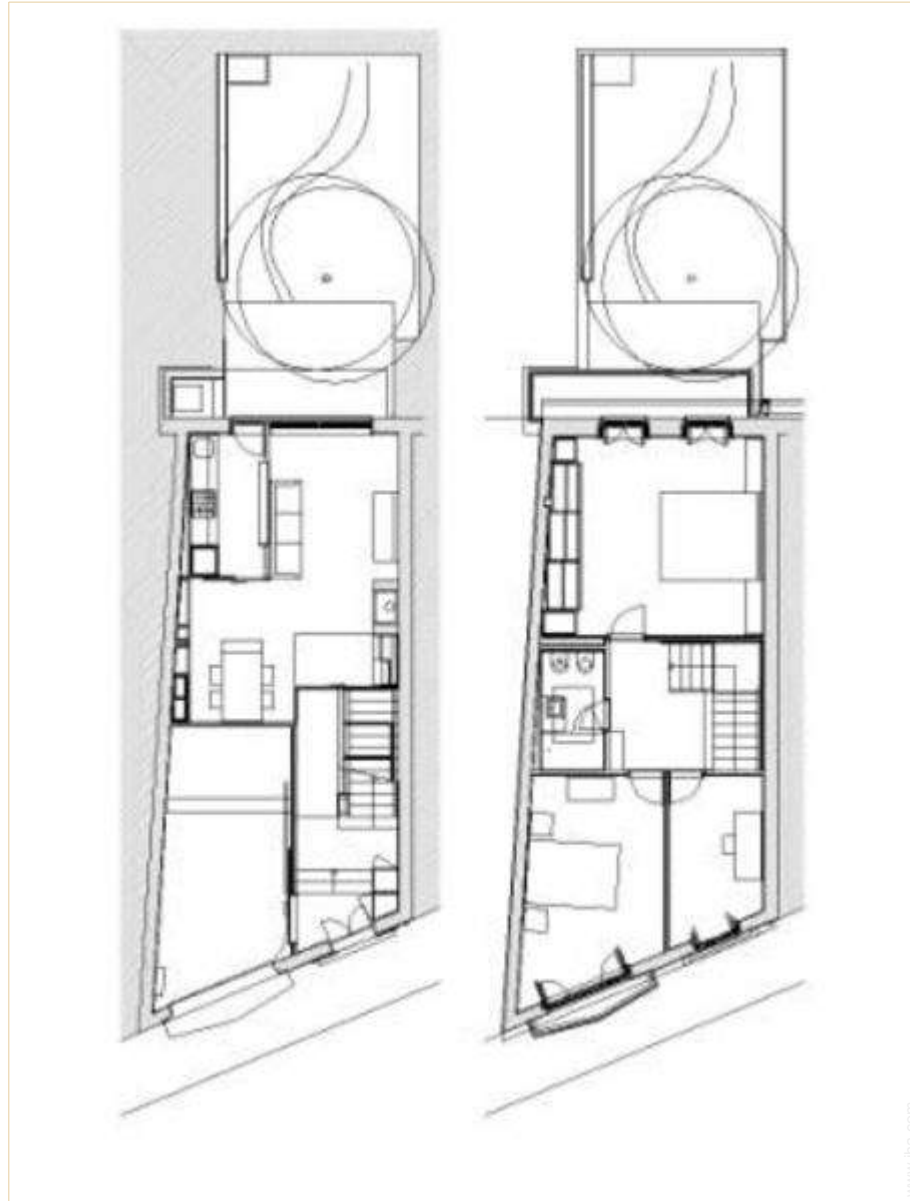


Photo album - 1



Advert No. 14821

[www.ihacom.com](http://www.ihacom.com)



Internet  
Holiday  
Ads



Internet  
Holiday  
Ads



DIRECT BY OWNERS

Photo album - 2



Advert No. 14821

[www.iha.com](http://www.iha.com)



>> VACATION RENTALS

Internet  
Holiday  
Ads



Internet  
Holiday  
Ads



DIRECT BY OWNERS

Photo album - 3



Advert No. 14821

www.iha.com



>> VACATION RENTALS

Internet  
Holiday  
Ads



Internet  
Holiday  
Ads



DIRECT BY OWNERS

### Location & Access



GPS coordinates in degrees, minutes, seconds: Latitude 41° 8'59.496"N - Longitude 8°36'38.268"W ([City](#))

#### Address

→ Rua da Natária, 148  
4250-325 Porto

#### • Airport Porto Francisco Sá Carneiro

→ Porto, Porto District, North, Portugal  
→ Distance : 3mi.  
→ Time : 10'

#### • Railroad station Porto Campanhã

→ Porto, Porto District, North, Portugal  
→ Distance : 2.5mi.  
→ Time : 30'

#### • Freeway (exit) VCI-Carvalhido

→ Porto, Porto District, North, Portugal  
→ Distance : 0.3mi.

- Porto : Distance : 0.62mi.
- Póvoa de Varzim : Distance : 18.5mi.
- Guimarães : Distance : 29,2mi.

### Contact

Last Name	Miss AMADO Fernanda
Address	Rua Da Natária, 148
City	4250-325 PORTO
Country	Portugal
Cell phone #	+351 919226581 (Portugal)

Spoken languages



Luxury vacation rental  
Porto District - North  
"Casa do Carvalho"

[Book now](#)

Availability calendar - from : may 2012

May	Tu	W	Th	F	Sa	Su	M	Tu	W	Th	F	Sa	Su	M	Tu	W	Th	F	Sa	Su	M	Tu	W	Th	F	Sa	Su	M	Tu	W	Th	
2012	1	2	3	4	5	6	7	8	9	10	11	12	13	14	15	16	17	18	19	20	21	22	23	24	25	26	27	28	29	30	31	

June	F	Sa	Su	M	Tu	W	Th	F	Sa	Su	M	Tu	W	Th	F	Sa	Su	M	Tu	W	Th	F	Sa								
2012	1	2	3	4	5	6	7	8	9	10	11	12	13	14	15	16	17	18	19	20	21	22	23	24	25	26	27	28	29	30	

Jul	Su	M	Tu	W	Th	F	Sa	Su	M	Tu	W	Th	F	Sa	Su	M	Tu	W	Th	F	Sa	Su	M	Tu							
2012	1	2	3	4	5	6	7	8	9	10	11	12	13	14	15	16	17	18	19	20	21	22	23	24	25	26	27	28	29	30	31

Reserved
  Low season
  High season

[Month : Next >>](#)

Rental rates - Luxury Residence - 6 Person(s)

Rates	Night	Weekend	week	2 weeks	Month
<span style="color: green;">■</span> Low season	\$113 * ↓ > 2	\$227 * (Friday)	\$714 *	\$1427 *	\$2266 *
<span style="color: blue;">■</span> Mid season	\$120 * ↓ > 2	\$277 * (Friday)	\$717 *	\$1435 *	\$2517 *
<span style="color: red;">■</span> High season	\$138 * ↓ > 2	\$277 * (Friday)	\$872 *	\$1745 *	\$2769 *
<span style="color: magenta;">■</span> Festive specials	\$126 * ↓ > 2	\$290 * (Friday)	\$755 *	-	-
<span style="color: yellow;">■</span> Promotional period	\$113 * ↓ > 2	\$252 * (Friday)	\$680 *	\$1359 *	\$2517 *

↓ Reducing rates (Check-in day) > Minimum Night

[Book now](#)





### Booking conditions

#### • Reservation

→ Payment made at time of reservation :  
30% of rental sum  
→ Payment balance :  
on return of keys

#### • Rental

→ Service charges included  
→ Cleaning charge levy on departure :  
\$63 \*  
→ Anticipated supplement for :  
- animals  
- supplementary bed(s)  
- firewood

### Accepted methods of payment

• Bank transfer (wire) • PayPal • Cash

[▶ Book now](#)

[▶ Contact the owner](#)

Contact directly the property owners

[www.iha.com](http://www.iha.com)  
Advert No.  
14821  
[>> Book now <<](#)

### Contact

Last Name Miss AMADO Fernanda  
Address Rua Da Natária, 148  
City 4250-325 PORTO  
Country Portugal  
Cell phone # +351 919226581  
(Portugal)

Spoken  
languages



\* Converted at the rate indicated : €100 = \$125.87 = £80.11

Advert No. 14821

[www.iha.com](http://www.iha.com)



[>> VACATION RENTALS](#)

Internet  
Holiday  
Ads



Internet  
Holiday  
Ads



[DIRECT BY OWNERS](#)