

Gîte - Self Catering Paris region "Le Jardin des Roches"



Gîte - Self Catering - House,
detached, 1 floor, separate entrance,
in(on) a(an) Property

Setting : country setting, pleasant

Capacity : 7 person(s)

Bedroom(s) : 2

Room(s) : 3



Gîtes de France (3 ears)



Theme breaks
Cookery classes

Moigny sur École - Essonne (91) - Paris - Île de France
France

Reservation : +33 (0) 1 60 77 79 86 (France)

Advert No. 57447

www.iha.com



Internet
Holiday
Ads



Internet
Holiday
Ads



Gîte - Self Catering



Gîte - Self Catering - House, detached, 1 floor, separate entrance, in(on) a(an) Property

- **Ideal for family, group**
- **View :** not overlooked, country side, swimming pool, garden/park, forest, village
- **Setting :** country setting, pleasant
- **Exposure :** South

Goodies

- **Swimming pool :**
Private swimming pool, rectangular (length 33', width 16'), heated, illuminated, wave machine, steps in, child secure, outside shower (open from 'may 01' till 'october 15')
- **Parking :**
Parking uncovered : 2 reserved stall
- **Advantages :**
Ping-pong table, 4 ping-pong bats, pétanque field, 4 pétanque set(s)
- **baby equipment :**
High chair, comfort station, infant tub



american style kitchen

Surroundings & location



Countryside Horse riding

Leisure

- **Leisure activities less than 12 miles :**

Golf, riding school, pony club, pathway/broadwalk, coastal/forest paths, hiking, rappel, rock climbing, glider (club), horse trekking, hunting, acrobatics, fishing

- **Supervised :**

Tennis school, riding school

- **Attractions and relaxation :**

Bar/pub, discotheque, restaurant, movie theater, park and garden, nature reserve, exhibition center, art gallery, museum, theater, antiques & bric-a-brac, cellar and wine tasting, sauna, steam baths

Surroundings

- **Locality :**

- Public tennis court 0.3mi.
- 18 hole golf course 4.5mi.
- Forest 990'

- **Amenities :**

- Village center 990'
- Downtown 1.5mi.
- Bike/mountain bike hire 1.5mi.
- Household linens for hire/laundry services
- Breadstore 990'
- Local stores 1.5mi.
- Supermarket 3mi.
- High class retailers 9mi.
- Hairdressing salon 1.5mi.
- Mail office 1.5mi.
- Bank 1.5mi.
- ATM 1.5mi.
- Drugstore 1.5mi.
- Doctor 1.5mi.
- Nurse 1.5mi.
- Hospital 9mi.



dining room



southerly view



bathroom

Interior

- **Receive up to guest(s) :**

7 person(s) - 7 adults

- **Liveable floor area :**

860 Sq.ft.

- **Interior layout :**

3 Room(s), 2 bedroom(s), 1 bathroom, 1 washroom, living room 215 Sq.ft., american style kitchen, dining room

- **Sleeps - bed(s) :**

2 full bed(s), 1 sleeper sofa(s) 2 pers, 1 twin bed(s), 1 baby cradle, 2 possible additional sleeping supplementary

- **Guest facilities :**

T.V., DVD player, board games, book collection, movie collection, wifi (wireless internet access), cupboard, Hanging wardrobe, hair dryer, heated towel rail, central heating, Glazed in area, Drapes, Double glazed, Rolling shutters, remote controlled gates, digipad entry gates

- **Appliances :**

Crockery/flatware, kitchen utensils, cafetiere, electric coffee maker, electric kettle, toaster, pancake maker, electric raclette set, fondue set, electric hobs, oven, micro-wave oven, electric fries fryer, extractor hood, refridgerator, deep freeze, dish washer, washing machine, vacuum cleaner, iron, ironing board

Exterior

- **Size of grounds :**

1 acre

- **Outside accommodation :**

Terrace 160 Sq.ft.

- **Outside setting :**

Wooded park 1 acre

- **Outside amenities :**

BBQ, yard table(s), 6 yard seat(s), 6 chaise (s) longue(s), 2 hammock(s), climbing frame, outside shower facilities



Kid's room

Services

- **washing :**

Sheets, Towels supplement (2 X / per week +\$6 *), Beach towels supplement (2 X / per week +\$6 *), Comforter(s), Comforter(s), Pillows

- **Single family home :**

Cleaning on departure supplement (+\$76 *)

- **Restauration :**

Guest table supplement (3 X / per week + \$31 *), Half board supplement (+\$50 *), Picnic basket supplement (+\$13 *)

For your guidance

- **For your guidance**

Kids welcome

Pets accepted under certain conditions (ask the owner)

Cell phone network coverage

Water : hot/cold

Local voltage supply : 220-240V / 50Hz

Electricity supply : mains



large bedroom

Photo album - 1



southerly view



dining room



american style kitchen



bathroom



large bedroom

Advert No. 57447

www.ihacom.com



Internet
Holiday
Ads



Internet
Holiday
Ads



Photo album - 2



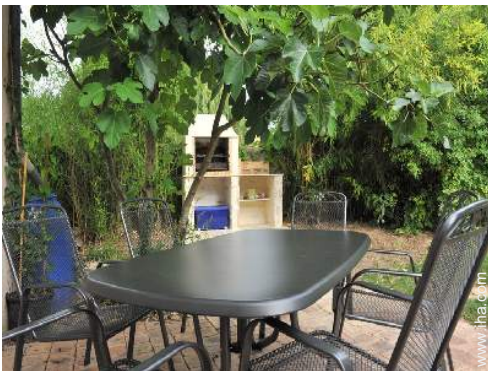
Kid's room



guest bedroom



guest bedroom



terrace



BBQ



wooded park



Heated swimming pool



nearby



Attractions and relaxation



Attractions and relaxation

Advert No. 57447

www.iha.com



Internet
Holiday
Ads



Internet
Holiday
Ads



Theme breaks

Cookery classes

Indicated duration : 3 hours
Participant(s) : 1 min - 6 max
Level : Initiation, **Advanced**, **Accompanied**

From \$50 for 1 person(s)

Summer, spring, On request (groups)



Location & Access



GPS coordinates in degrees, minutes, seconds: Latitude 48° 25'57.396"N - Longitude 2°27'27.288"E ([City](#))

Address

→ 6 chemin des Ruelles
91490 Moigny sur École

• Freeway (exit) A6

→ Milly la Forêt, Essonne, Paris - Île de France, France
→ Distance : 3mi.
→ Time : 10'

• Airport Paris Orly

→ Paris, Paris, Paris - Île de France, France
→ Distance : 23,6mi.
→ Time : 40'

• Freeway (exit) A10 - A 11

→ Saint Arnoult en Yvelines, Yvelines, Paris - Île de France, France
→ Distance : 28mi.
→ Time : 45'

- Milly la Forêt : Distance : 2.5mi.
- Fontainebleau : Distance : 12.5mi.
- Paris : Distance : 31mi.

Contact

| | |
|--------------|---|
| Last Name | Mr. LEMAHIEU Gilbert & Miss CAMPAILLA Véronique Le Jardin des Roches |
| Address | 6 chemin des Ruelles |
| City | 91490 MOIGNY SUR ECOLE |
| Country | France |
| Phone # | +33 (0) 1 60 77 79 86 (France) |
| Cell phone # | +33 (0) 6 83 73 25 08 (France) |

Spoken languages



Gîte - Self Catering
Paris region - France
"Le Jardin des Roches"

8
[Book now](#)

Availability calendar - from : may 2012




| May | Tu | W | Th | F | Sa | Su | M | Tu | W | Th | F | Sa | Su | M | Tu | W | Th | F | Sa | Su | M | Tu | W | Th | F | Sa | Su | M | Tu | W | Th | |
|------|----|---|----|---|----|----|---|----|---|----|----|----|----|----|----|----|----|----|----|----|----|----|----|----|----|----|----|----|----|----|----|--|
| 2012 | 1 | 2 | 3 | 4 | 5 | 6 | 7 | 8 | 9 | 10 | 11 | 12 | 13 | 14 | 15 | 16 | 17 | 18 | 19 | 20 | 21 | 22 | 23 | 24 | 25 | 26 | 27 | 28 | 29 | 30 | 31 | |
| | | | | | | | | | | | | | | | | | | | | | | | | | | | | | | | | |

| June | F | Sa | Su | M | Tu | W | Th | F | Sa | Su | M | Tu | W | Th | F | Sa | Su | M | Tu | W | Th | F | Sa | | | | | | | |
|------|---|----|----|---|----|---|----|---|----|----|----|----|----|----|----|----|----|----|----|----|----|----|----|----|----|----|----|----|----|----|
| 2012 | 1 | 2 | 3 | 4 | 5 | 6 | 7 | 8 | 9 | 10 | 11 | 12 | 13 | 14 | 15 | 16 | 17 | 18 | 19 | 20 | 21 | 22 | 23 | 24 | 25 | 26 | 27 | 28 | 29 | 30 |
| | - | - | - | - | - | - | - | - | - | - | - | - | - | - | - | - | - | - | - | - | - | - | - | - | - | - | - | - | - | - |

| Jul | Su | M | Tu | W | Th | F | Sa | Su | M | Tu | W | Th | F | Sa | Su | M | Tu | W | Th | F | Sa | Su | M | Tu | | | | | | | |
|------|----|---|----|---|----|---|----|----|---|----|----|----|----|----|----|----|----|----|----|----|----|----|----|----|----|----|----|----|----|----|----|
| 2012 | 1 | 2 | 3 | 4 | 5 | 6 | 7 | 8 | 9 | 10 | 11 | 12 | 13 | 14 | 15 | 16 | 17 | 18 | 19 | 20 | 21 | 22 | 23 | 24 | 25 | 26 | 27 | 28 | 29 | 30 | 31 |
| | - | - | - | - | - | - | - | - | - | - | - | - | - | - | - | - | - | - | - | - | - | - | - | - | - | - | - | - | - | - | |

[Month : Next >>](#)

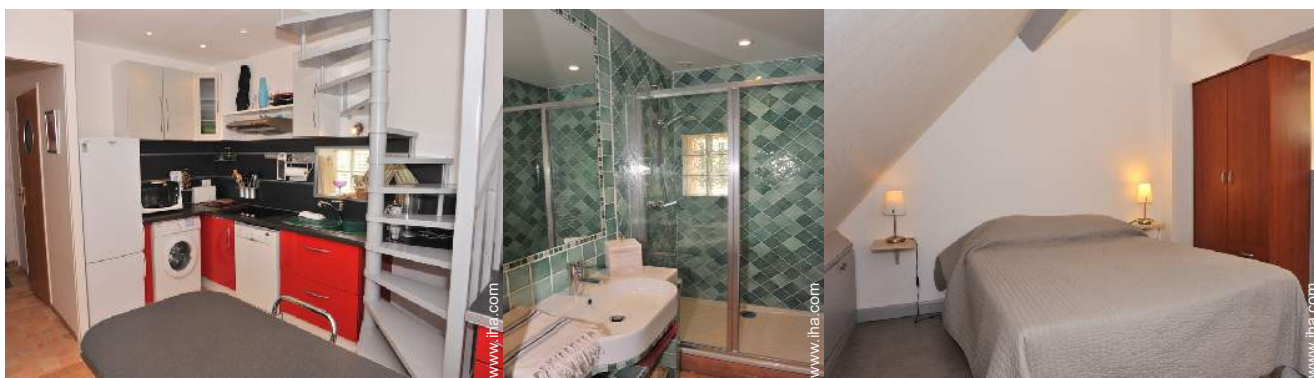
Rental rates - Gîte - Self Catering - House - 7 Person(s)

| Rates | Night | Weekend | week | 2 weeks | Month |
|---|---------|----------------------------|------------------------------|-------------------------------|----------|
|  Low season | \$101 * | - | \$503 * <i>(Saturday)</i> | \$1007 * | \$1888 * |
|  Mid season | \$101 * | \$315 * <i>(Friday)</i> | \$566 * <i>(Saturday)</i> | \$1133 * <i>(Saturday)</i> | \$2014 * |
|  High season | \$101 * | \$378 * <i>(Friday)</i> | \$692 * <i>(Saturday)</i> | \$1385 * <i>(Saturday)</i> | \$2517 * |

(Check-in day)

[Book now](#)





american style kitchen

bathroom

large bedroom



southerly view



dining room

Booking conditions

• Reservation

- Payment made at time of reservation : 50% of rental sum
- Payment balance : on return of keys
- Deposit required : \$378 *

• Rental

- Service charges to be added
- Day tax included
- Cleaning charge levy on departure : \$76 *
- Anticipated supplement for :
- supplementary bed(s)

Accepted methods of payment

- Bank transfer (wire) • Check • Travellers Cheques • Cash • Holiday coupon

[▶ Book now](#)

[▶ Contact the owner](#)

Contact directly the property owners

www.ihacom.com

Advert No.

57447

[>> Book now <<](#)

Contact

| | |
|--------------|---|
| Last Name | Mr. LEMAHIEU Gilbert & Miss CAMPAILLA Véronique Le Jardin des Roches |
| Address | 6 chemin des Ruelles |
| City | 91490 MOIGNY SUR ECOLE |
| Country | France |
| Phone # | +33 (0) 1 60 77 79 86 (France) |
| Cell phone # | +33 (0) 6 83 73 25 08 (France) |

Spoken languages



* Converted at the rate indicated : €100 = \$125.87 = £80.11

Advert No. 57447

www.ihacom.com



Internet
Holiday
Ads



Internet
Holiday
Ads

