

# Vacation rental Mediterranean Sea Provençal House



**Provençal House**, detached, single storey, shared entrance, in(on) a(an) Private property

Setting : peaceful, suitable for a relaxing break

Capacity : 4 person(s)

Bedroom(s) : 1

Room(s) : 2

Allauch - Bouches du Rhône (13) - Provence Alpes Côte d'Azur (French Riviera)

France

Reservation : +33 (0) 491684605 (France)

Advert No. 71836

[www.ihacom.com](http://www.ihacom.com)



>> VACATION RENTALS

Internet  
Holiday  
Ads



Internet  
Holiday  
Ads



DIRECT BY OWNERS

### Vacation rental



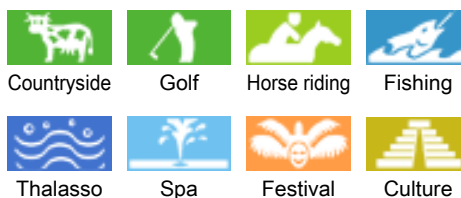
Provençal House, detached, single storey, shared entrance, in(on) a(an) Private property

- **Ideal for family, all age groups**
- **View :** panoramic, unobscured, not overlooked, country side, swimming pool, garden/park
- **Setting :** peaceful, suitable for a relaxing break
- **Exposure :** West

### Goodies

- **Swimming pool :**  
Private swimming pool, rectangular (length 23', width 9.8'), step ladder, outside shower
- **Parking :**  
Parking uncovered : 1 off road
- **Advantages :**  
Ping-pong table, 4 ping-pong bats, basket ball net, pétanque field, 8 pétanque set(s)

### Surroundings & location



#### Leisure

- **Leisure activities less than 12 miles :**  
Ice-skating, bathing, pedalo, snorkelling, scuba diving, Scuba diving (Standard diving dress), water skiing, jet ski, windsurfing, sailing, golf, tennis, riding school, pony club, pathway/broadwalk, hiking, rappel, mountain bike (path), sand yachting, parascending, boat trips, horse trekking, rollerblade/rollerskate (circuit), skate board (ramps), ten-pin bowling, fishing, deep-sea fishing, fishing, spear fishing, pétanque field

- **Supervised :**  
Sailing school, dive school, tennis school, riding school

- **Attractions and relaxation :**  
Bar/pub, discotheque, restaurant, movie theater, karaoke, park and garden, leisure park, zoo/animal park, sea world, nature reserve, exhibition center, art gallery, historical site, museum, theater, summer theater, opera house, festivals, antiques & bric-a-brac, local craftstore, cellar and wine tasting, casino, race track, thermal baths, thalassotherapy center, sauna, steam baths, health spa, beauticians, fitness center, Bio farm

#### Surroundings

- **Locality :**
  - Ice skating rink 9mi.
  - Heated swimming pool 1.25mi.
  - Sea/ocean 9mi.
  - Sandy beach 25mi.
  - Shingle beach 9mi.
  - Rocky beach 12.5mi.
  - Sea inlet 25mi.
  - Public swimming pool 1.25mi.
  - Public tennis court 1.25mi.
  - 18 hole golf course 4.5mi.
  - Watersports centre 9mi.
  - Cliff 18.5mi.
  - Marina 9mi.
  - Slipway 12.5mi.
  - Jetski slipway 18.5mi.

- **Amenities :**
  - Village center 0.62mi.
  - Downtown 4.5mi.
  - Bus stop / bus station 0.3mi.
  - Subway station 6mi.
  - Streetcar system 12.5mi.
  - Bus pick up point beach 6mi.
  - Bike/mountain bike hire 1.25mi.
  - Car rental 0.93mi.

- Boat rental 12.5mi.
- Scuba diving material hire 12.5mi.
- Breadstore 0.62mi.
- Caterer 1.25mi.
- Local stores 1.25mi.
- Supermarket 3mi.
- High class retailers 3mi.
- Hairdressing salon 1.25mi.
- Mail office 0.93mi.
- Bank 0.93mi.
- ATM 0.93mi.
- Drugstore 0.93mi.
- Doctor 1.25mi.
- Nurse 0.93mi.
- Hospital 4.5mi.
- Dispensary 4.5mi.



sleeping den



shower room



landscaped yard



dining room

### Interior

- **Receive up to guest(s) :**  
4 person(s) - 2 adults, 2 kids
- **Liveable floor area :**  
860 Sq.ft.
- **Interior layout :**  
2 Room(s), 1 bedroom(s), 1 shower room, 1 washroom, living room 430 Sq.ft., american style kitchen, dining room, pantry
- **Sleeps - bed(s) :**  
1 full bed(s), 1 twin bed(s), 1 guest folding bed(s) 1 pers, 1 twin storage bed 1 pers
- **Guest facilities :**  
T.V., DVD player, book collection, t.v points, wifi (wireless internet access), cupboard, Hanging wardrobe, electric heating, Drapes, Double glazed
- **Appliances :**  
Crockery/flatware, kitchen utensils, electric coffee maker, toaster, electric raclette set, fondue set, gaz stove, oven, micro-wave oven, extractor hood, refridgerator, deep freeze, dish washer, washing machine, vacuum cleaner, iron, ironing board

### Exterior

- **Size of grounds :**  
1.25 acre
- **Outside accommodation :**  
Terrace 2,150 Sq.ft.
- **Outside setting :**  
Yard 2,150 Sq.ft., lawn 1,600 Sq.ft.
- **Outside amenities :**  
Gaz BBQ, yard table(s), 6 yard seat(s), trolley on wheels, parasol, yard seated area, 6 sun recliner(s), child's swing, climbing frame, outside shower facilities



american style kitchen

### Services

- **washing :**  
Sheets, Towels supplement, Linen, Comforter (s), Comforter(s), Pillows
- **Single family home :**  
Serviced supplement (1 X / per week +\$25 \*), Cleaning on departure supplement (+\$63 \*), Yard/swimming pool maintenance, Caretaker/ concierge, Parking
- **Personnel :**  
Baby sitting supplement

### For your guidance

- **For your guidance**  
Kids welcome  
No pet allowed  
Cell phone network coverage, personal transport advisable  
Water : hot/cold  
Local voltage supply : 220-240V / 50Hz  
Electricity supply : individual generator



view from the living room

Photo album - 1



landscaped yard



shower room



sleeping den



dining room



view from the living room

Advert No. 71836

[www.ihacom.com](http://www.ihacom.com)



>> VACATION RENTALS

Internet  
Holiday  
Ads



Internet  
Holiday  
Ads



DIRECT BY OWNERS

Photo album - 2



american style kitchen



view from the living room



living room



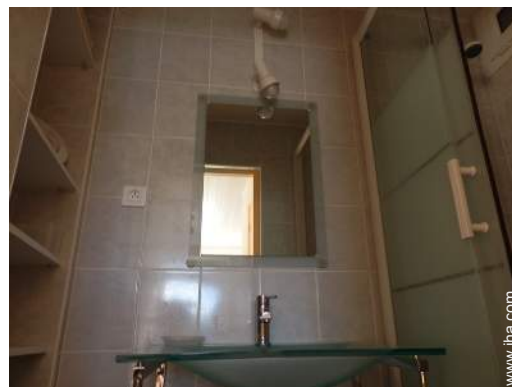
large bedroom



bedroom



bedroom



shower room

Photo album - 3



yard

Outside setting



view from the garden/park

view from the garden/park



shower room

pétanque field



private swimming pool

### Location & Access



GPS coordinates in degrees, minutes, seconds: Latitude 43° 21'25"N - Longitude 5°28'37"E ([Dwelling](#))

#### Address

→ 681 Chemin de Bon Rencontre  
13190 Allauch

#### • Airport Marseille Provence

→ Marseille, Bouches du Rhône, Provence Alpes Côte d'Azur (French Riviera), France  
→ Distance : 22,5mi.  
→ Time : 40'

#### • Railroad station Marseille Saint Charles

→ Marseille, Bouches du Rhône, Provence Alpes Côte d'Azur (French Riviera), France  
→ Distance : 6mi.  
→ Time : 20'


#### • Sea port Marseille

→ Marseille, Bouches du Rhône, Provence Alpes Côte d'Azur (French Riviera), France  
→ Distance : 8mi.  
→ Time : 30'

- Marseille : Distance : 7,5mi.
- Aubagne : Distance : 9mi.
- Plan de Cuques : Distance : 1.5mi.

### Contact

|              |                             |
|--------------|-----------------------------|
| Last Name    | Miss ROUYEYRE Monique       |
| Address      | 681 Chemin de Bon Rencontre |
| City         | 13190 ALLAUCH               |
| Country      | France                      |
| Phone #      | +33 (0) 491684605 (France)  |
| Cell phone # | +33 (0) 608507726 (France)  |

Spoken languages 



Availability calendar - from : may 2012

| May  | Tu | W | Th | F | Sa | Su | M | Tu | W | Th | F  | Sa | Su | M  | Tu | W  | Th | F  | Sa | Su | M  | Tu | W  | Th |    |    |    |    |    |    |    |
|------|----|---|----|---|----|----|---|----|---|----|----|----|----|----|----|----|----|----|----|----|----|----|----|----|----|----|----|----|----|----|----|
| 2012 | 1  | 2 | 3  | 4 | 5  | 6  | 7 | 8  | 9 | 10 | 11 | 12 | 13 | 14 | 15 | 16 | 17 | 18 | 19 | 20 | 21 | 22 | 23 | 24 | 25 | 26 | 27 | 28 | 29 | 30 | 31 |
|      |    |   |    |   |    |    |   |    |   |    |    |    |    |    |    |    |    |    |    |    |    |    |    |    | -  | -  | -  | -  | -  | -  | -  |

| June | F | Sa | Su | M | Tu | W | Th | F | Sa | Su | M  | Tu | W  | Th | F  | Sa | Su | M  | Tu | W  | Th | F  | Sa |    |    |    |    |    |    |    |
|------|---|----|----|---|----|---|----|---|----|----|----|----|----|----|----|----|----|----|----|----|----|----|----|----|----|----|----|----|----|----|
| 2012 | 1 | 2  | 3  | 4 | 5  | 6 | 7  | 8 | 9  | 10 | 11 | 12 | 13 | 14 | 15 | 16 | 17 | 18 | 19 | 20 | 21 | 22 | 23 | 24 | 25 | 26 | 27 | 28 | 29 | 30 |
|      | - | -  | -  | - | -  | - | -  | - | -  | -  | -  | -  | -  | -  | -  | -  | -  | -  | -  | -  | -  | -  | -  | -  | -  | -  | -  | -  | -  | -  |

| Jul  | Su | M | Tu | W | Th | F | Sa | Su | M | Tu | W  | Th | F  | Sa | Su | M  | Tu | W  | Th | F  | Sa | Su | M  | Tu |    |    |    |    |    |    |    |
|------|----|---|----|---|----|---|----|----|---|----|----|----|----|----|----|----|----|----|----|----|----|----|----|----|----|----|----|----|----|----|----|
| 2012 | 1  | 2 | 3  | 4 | 5  | 6 | 7  | 8  | 9 | 10 | 11 | 12 | 13 | 14 | 15 | 16 | 17 | 18 | 19 | 20 | 21 | 22 | 23 | 24 | 25 | 26 | 27 | 28 | 29 | 30 | 31 |
|      | -  | - | -  | - | -  | - | -  | -  | - | -  | -  | -  | -  | -  | -  | -  | -  | -  | -  | -  | -  | -  | -  | -  | -  | -  | -  | -  | -  | -  |    |

Reserved

[Month : Next >>](#)

Rental rates - Provençal House - 4 Person(s)

| Rates                                | Night | Weekend | week                  | 2 weeks                | Month                  |
|--------------------------------------|-------|---------|-----------------------|------------------------|------------------------|
| <input type="checkbox"/> Low season  | -     | -       | \$566 *<br>(Saturday) | \$1070 *<br>(Saturday) | \$2014 *<br>(Saturday) |
| <input type="checkbox"/> Mid season  | -     | -       | \$655 *<br>(Saturday) | -                      | \$2014 *<br>(Saturday) |
| <input type="checkbox"/> High season | -     | -       | \$856 *<br>(Saturday) | -                      | \$2140 *<br>(Saturday) |

(Check-in day)

[Book now](#)





sleeping den



dining room



view from the living room



landscaped yard



shower room

### Booking conditions

#### • Reservation

- Payment made at time of reservation : 35% of rental sum
- Payment balance : on return of keys
- Deposit required : \$503 \*

#### • Rental

- Service charges included
- Day tax included
- Cleaning charge levy on departure : \$63 \*

[▶ Book now](#)

[▶ Contact the owner](#)

### Accepted methods of payment

- International Money Order • Check • Cash

Contact directly the property owners

[www.ihacom.com](http://www.ihacom.com)  
**Advert No.**  
**71836**  
**>> Book now <<**

### Contact

Last Name Miss ROUYEYRE Monique  
Address 681 Chemin de Bon Rencontre  
City 13190 ALLAUCH  
Country France  
Phone # +33 (0) 491684605 (France)  
Cell phone # +33 (0) 608507726 (France)

Spoken languages 

\* Converted at the rate indicated : €100 = \$125.87 = £80.11

Advert No. 71836

[www.ihacom.com](http://www.ihacom.com)



Internet  
Holiday  
Ads



Internet  
Holiday  
Ads

