

Vacation rental South Alpes "L'enclos des puits"



Apartment-Flat yard level, separate entrance, in(on) a(an) Chalet single storey

Setting : quiet, mountainy

Capacity : 4 person(s)

Bedroom(s) : 2



Clé vacances (3 keys)
Meublés de Tourisme (3 stars)

Serre Chevalier 1350 (Chantemerle) - Upper Alpes (05) - Provence Alpes Côte d'Azur (French Riviera)

France

Reservation : +33 (0) 4 92 24 07 61 (France)

Advert No. 15930

www.iha.com



Internet
Holiday
Ads



Internet
Holiday
Ads



Vacation rental



Apartment-Flat yard level, separate entrance, in(on) a(an) Chalet single storey

- **Ideal for all age groups, sporty types**
- **View :** unobscured, not overlooked, mountain, garden/park, forest, village
- **Setting :** quiet, mountainy
- **Exposure :** South

Goodies

- **Parking :**
Parking uncovered : 2 reserved stall, off road
- **Advantages :**
Ski locker, ski boot warmer

Surroundings & location



Leisure

- **Leisure activities less than 12 miles :**

Alpine skiing, cross-country skiing, ski-trekking, snowboarding, luge (run), ice-skating, skidoo, dogsledding, bathing, pedalo, surfing, canoeing, canyoning, rafting, golf, tennis, squash, riding school, pony club, rappel, mountain bike (path), paragliding, horse trekking, mini-golf, skate board (ramps), ATV/Quad Bike, go-karting, race track, ten-pin bowling, fishing

- **Supervised :**

Ski school, kids ski area, tennis school, riding school

- **Attractions and relaxation :**

Bar/pub, discotheque, restaurant, movie theater, karaoke, park and garden, nature reserve, art gallery, historical site, museum, theater, festivals, antiques & bric-a-brac, local craftstore, casino, natural spring baths, thermal baths, sauna, steam baths, health spa, beauticians, fitness center, Bio farm

Surroundings

- **Locality :**

- Ski slopes 0.62mi.
- Ski lifts 0.62mi.
- Ice skating rink 0.62mi.
- Public swimming pool 0.62mi.
- Public tennis court 0.62mi.
- 18 hole golf course 9mi.
- Flying clubs 15.5mi.
- Windsurfing spots 25mi.
- Surfing spots 0.62mi.
- Watersports centre 25mi.
- River rapids 0.3mi.
- Cliff 2.5mi.
- Stretch of water 1.85mi.
- Forest 990'
- Via ferrata-alpinism 0.62mi.

- **Amenities :**

- Kindergarten 0.62mi.
- Village center 990'
- Bus stop / bus station <165'
- Ski bus pick up point <165'
- Bike/mountain bike hire 0.62mi.
- Car rental 1.85mi.
- Ski hire store 0.5mi.
- Household linens for hire/laundry services 0.62mi.
- Caterer 0.62mi.
- Local stores 990'
- Supermarket 0.62mi.
- Hairdressing salon 0.62mi.

- Mail office 990'
- Bank 1.85mi.
- ATM 0.62mi.
- Drugstore 0.62mi.
- Doctor 0.62mi.
- Nurse 0.62mi.
- Hospital 1.85mi.



view from the bedroom



overall view



Single family home



view from the sitting-room

Exterior

- **Size of grounds :**
0.25 acre.
- **Outside accommodation :**
Covered terrace 160 Sq.ft.
- **Outside setting :**
Private courtyard, yard > 0.25 acre, lawn 3,300 Sq.ft., orchard, kitchen garden
- **Outside amenities :**
BBQ, yard table(s), 4 yard seat(s), parasol, 2 sun recliner(s)



bunk beds

Interior

- **Receive up to guest(s) :**
4 person(s)
- **Liveable floor area :**
430 Sq.ft.
- **Interior layout :**
2 bedroom(s), 1 shower room, 1 washroom, living room 194 Sq.ft., Kitchen Area, dining area, tv den
- **Sleeps - bed(s) :**
1 full bed(s), 1 sleeper sofa(s) 2 pers, 1 bunk beds
- **Guest facilities :**
T.V., hi-fi system, wifi (wireless internet access), wardrobe, cupboard, Hanging wardrobe, hair dryer, heated towel rail, electric heating, Drapes, Double glazed
- **Appliances :**
Crockery/flatware, kitchen utensils, electric coffee maker, toaster, juicer, pancake maker, electric raclette set, electric hobs, oven, micro-wave oven, extractor hood, refridgerator, dish washer, washing machine, vacuum cleaner, iron, ironing board

Services

- **washing :**
Sheets supplement, Towels supplement, Linen supplement, Comforter(s), Pillows
- **Single family home :**
Snow clearance, Parking, Airport transfers

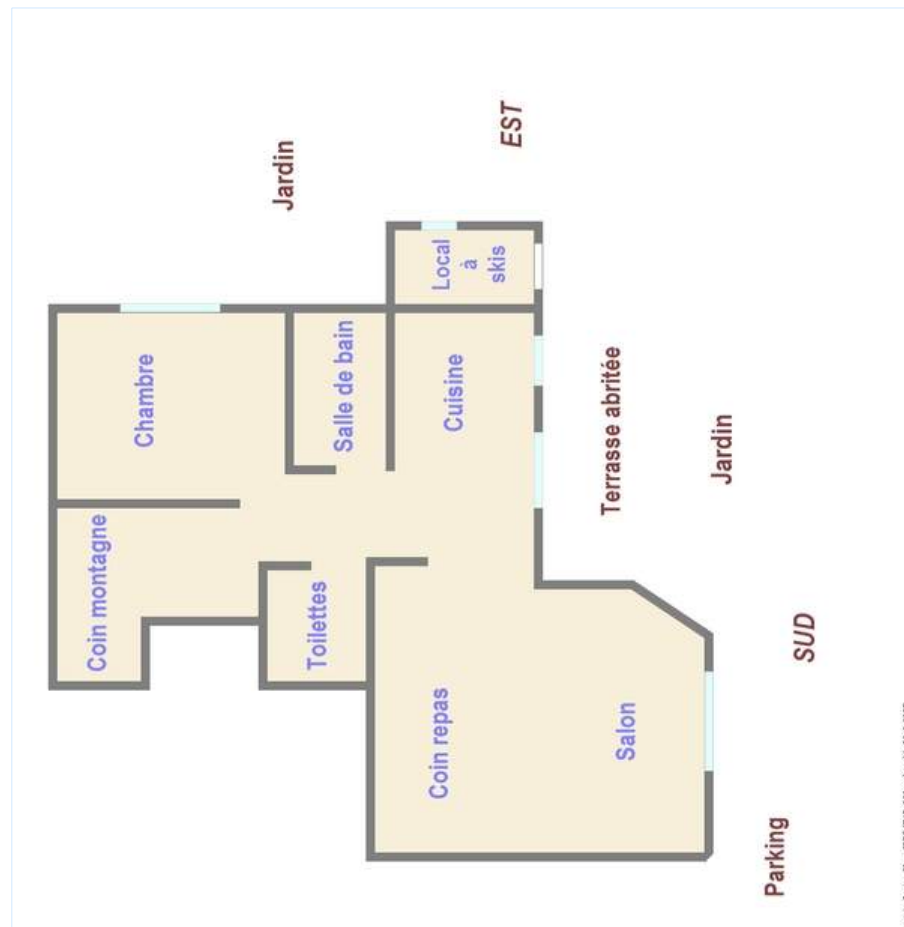
For your guidance

- **For your guidance**
Kids welcome
Pets friendly
Cell phone network coverage



shower room

Floor plan



Projet: Cote..._Rou..._RSE... (7/17/2009 vml) - oriel: 25.9.2007



Photo album - 1



Single family home



overall view



view from the bedroom

Photo album - 2



view from the sitting-room



shower room



bunk beds



bedroom

Location & Access



GPS coordinates in degrees, minutes, seconds: Latitude 44° 55'40"N - Longitude 6°36'13"E ([Dwelling](#))

Address

→ 32 route du pont levis
Saint Chaffrey
05240 Serre Chevalier 1350 (Chantemerle)

• Freeway (exit) A 51 Tallard

→ Tallard, Upper Alpes, Provence Alpes Côte d'Azur (French Riviera), France
→ Distance : 59mi.
→ Time : 1h15'

• Freeway (exit) A6 A43 Grenoble

→ Grenoble, Isère, Rhône Alpes, France
→ Distance : 68,5mi.
→ Time : 1h30'

• Freeway (exit) A 43 Saint Michel de Maurienne

→ Saint Michel de Maurienne, Savoy, Rhône Alpes, France
→ Distance : 50mi.
→ Time : 1h15'

- Briançon : Distance : 4.5mi.
- Claviere : Distance : 12.5mi.
- Grenoble : Distance : 68,5mi.

Contact

Last Name	Miss PELLET DOVETTA Isabelle
Address	32 route du pont levis
City	SERRE CHEVALIER
Country	France
Phone #	+33 (0) 4 92 24 07 61 (France)
Cell phone #	+33 (0) 6 89 04 07 07 (France)

Spoken languages



Availability calendar - from : may 2012

May	Tu	W	Th	F	Sa	Su	M	Tu	W	Th	F	Sa	Su	M	Tu	W	Th	F	Sa	Su	M	Tu	W	Th							
2012	1	2	3	4	5	6	7	8	9	10	11	12	13	14	15	16	17	18	19	20	21	22	23	24	25	26	27	28	29	30	31

June	F	Sa	Su	M	Tu	W	Th	F	Sa	Su	M	Tu	W	Th	F	Sa	Su	M	Tu	W	Th	F	Sa							
2012	1	2	3	4	5	6	7	8	9	10	11	12	13	14	15	16	17	18	19	20	21	22	23	24	25	26	27	28	29	30
	-	-	-	-	-	-	-	-	-	-	-	-	-	-	-	-	-	-	-	-	-	-	-	-	-	-	-	-	-	-

Jul	Su	M	Tu	W	Th	F	Sa	Su	M	Tu	W	Th	F	Sa	Su	M	Tu	W	Th	F	Sa	Su	M	Tu							
2012	1	2	3	4	5	6	7	8	9	10	11	12	13	14	15	16	17	18	19	20	21	22	23	24	25	26	27	28	29	30	31
	-	-	-	-	-	-	-	-	-	-	-	-	-	-	-	-	-	-	-	-	-	-	-	-	-	-	-	-	-	-	

Reserved

[Month : Next >>](#)

Rental rates - Apartment-Flat - 4 Person(s)

Rates	Night	Weekend	week	2 weeks	Month
<input type="checkbox"/> Low season	-	-	\$308 *	-	-

[Book now](#)

Booking conditions

- **Reservation**
→ Payment made at time of reservation : 30% of rental sum
→ Payment balance : on return of keys
→ Deposit required : \$201 *
- **Rental**
→ Service charges included
→ Day tax in addition
→ Anticipated supplement for : - supplementary bed(s)

[▶ Book now](#)

[▶ Contact the owner](#)

Accepted methods of payment

- International Money Order • Bank transfer (wire) • Check • PayPal • Travellers Cheques • Cash • Holiday coupon

Contact directly the property owners

www.ihacom.com

Advert No.

15930

[>> Book now <<](#)

Contact

Last Name Miss PELLET DOVETTA
Isabelle
Address 32 route du pont levis
City SERRE CHEVALIER
Country France
Phone # +33 (0) 4 92 24 07 61
(France)
Cell phone # +33 (0) 6 89 04 07 07
(France)

Spoken languages 

* Converted at the rate indicated : €100 = \$125.87 = £80.11
Advert No. 15930

www.ihacom.com



Internet
Holiday
Ads



Internet
Holiday
Ads

