

Vacation rental South Alpes "Le Prieuré"



Duplex Apartment 3rd floor, shared entrance, in(on) a(an) Village House 2 floors

Setting : mountainy, sporty

Capacity : 7 person(s)

Bedroom(s) : 2

Room(s) : 3



Meublés de Tourisme (3 stars)

Serre Chevalier 1350 (Chantemerle) - Upper Alpes (05) - Provence Alpes Côte d'Azur (French Riviera)

France

Reservation : +33 (0) 492223387 (France)

Advert No. 1958

www.iha.com



Internet
Holiday
Ads



Internet
Holiday
Ads



Vacation rental



Duplex Apartment 3rd floor, shared entrance, in(on) a(an) Village House 2 floors

- **Ideal for all age groups**
- **View :** panoramic, unobscured, not overlooked, mountain, forest, village
- **Setting :** mountainy, sporty
- **Exposure :** South

Goodies

- **Parking :**
Parking uncovered : 1 reserved stall
- **Advantages :**
Ski locker



kitchen

Surroundings & location



Mountain Ski Horse riding Fishing

Leisure

- **Leisure activities less than 12 miles :**

Alpine skiing, cross-country skiing, off-piste skiing, ski-trekking, Télémark skiing, heliski, snowboarding, skidoo, bathing, pedalo, canoeing, canyoning, rafting, golf, tennis, pony club, mountain bike (path), horse trekking, donkey rides, mini-golf, skate board (ramps), ATV/Quad Bike, go-karting, race track, ten-pin bowling, paintball, hunting, acrobatics, fishing, pétanque field

- **Supervised :**

Ski school, kids ski area, tennis school, riding school

- **Attractions and relaxation :**

Bar/pub, discotheque, restaurant, movie theater, karaoke, park and garden, leisure park, historical site, museum, theater, antiques & bric-a-brac, local craftstore, cellar and wine tasting, casino, natural spring baths, thermal baths, sauna, steam baths, health spa, beauticians, fitness center, Bio farm

Surroundings

- **Locality :**

- Ski slopes 330'
- Ski lifts 330'
- Ice skating rink 660'
- Heated swimming pool 4.5mi.
- Public swimming pool 660'
- Public tennis court 0.3mi.
- 9 hole golf course 9mi.
- Waterfall
- Cliff
- River
- Stretch of water
- Lake
- Forest
- Mountain range
- Via ferrata-alpinism

- **Amenities :**

- Kindergarten 330'
- Village center <165'
- Bike/mountain bike hire 330'
- Car rental 3mi.
- Ski hire store 330'
- Household linens for hire/laundry services 330'
- Breadstore 330'
- Caterer 330'
- Local stores 330'
- Supermarket 330'
- Hairdressing salon 330'
- Internet cafe 330'
- Mail office 0.5mi.
- Bank 330'
- ATM 330'

- Drugstore 330'
- Doctor 330'
- Nurse 330'
- Hospital 3mi.





sitting room

Exterior

- Outside accommodation :
Balcony 21.5 Sq.ft



bathroom

Interior

- Receive up to guest(s) :
7 person(s)
- Liveable floor area :
700 Sq.ft.
- Interior layout :
3 Room(s), 2 bedroom(s), 1 bathroom, 1 washroom, living room 380 Sq.ft., sitting room, large american style kitchen
- Sleeps - bed(s) :
2 full bed(s), 2 sleeper sofa(s) 2 pers, 1 bunk beds, 1 baby cradle
- Guest facilities :
T.V., hi-fi system, DVD player, t.v points, wifi (wireless internet access), wardrobe, cupboard, Hanging wardrobe, radio alarmclock, hair dryer, heated towel rail, electric heating, skylights, Drapes, Blinds, Double glazed, entry phone system, digipad entry system
- Appliances :
Crockery/flatware, kitchen utensils, cafetiere, electric kettle, toaster, juicer, food processor, pancake maker, electric raclette set, meat broiler, gaz stove, electric stove, oven, micro-wave oven, extractor hood, refridgerator, dish washer, washing machine, clothes dryer, vacuum cleaner, iron, ironing board

Services

- washing :
Sheets supplement, Towels supplement, Linen supplement, Comforter(s), Pillows

For your guidance

- For your guidance
Kids welcome
Pets friendly
Present on site : pets
Cell phone network coverage
Water : hot/cold
Local voltage supply : 220V / 60Hz
Electricity supply : mains



Advert No. 1958

www.iha.com



>> VACATION RENTALS

Internet
Holiday
Ads

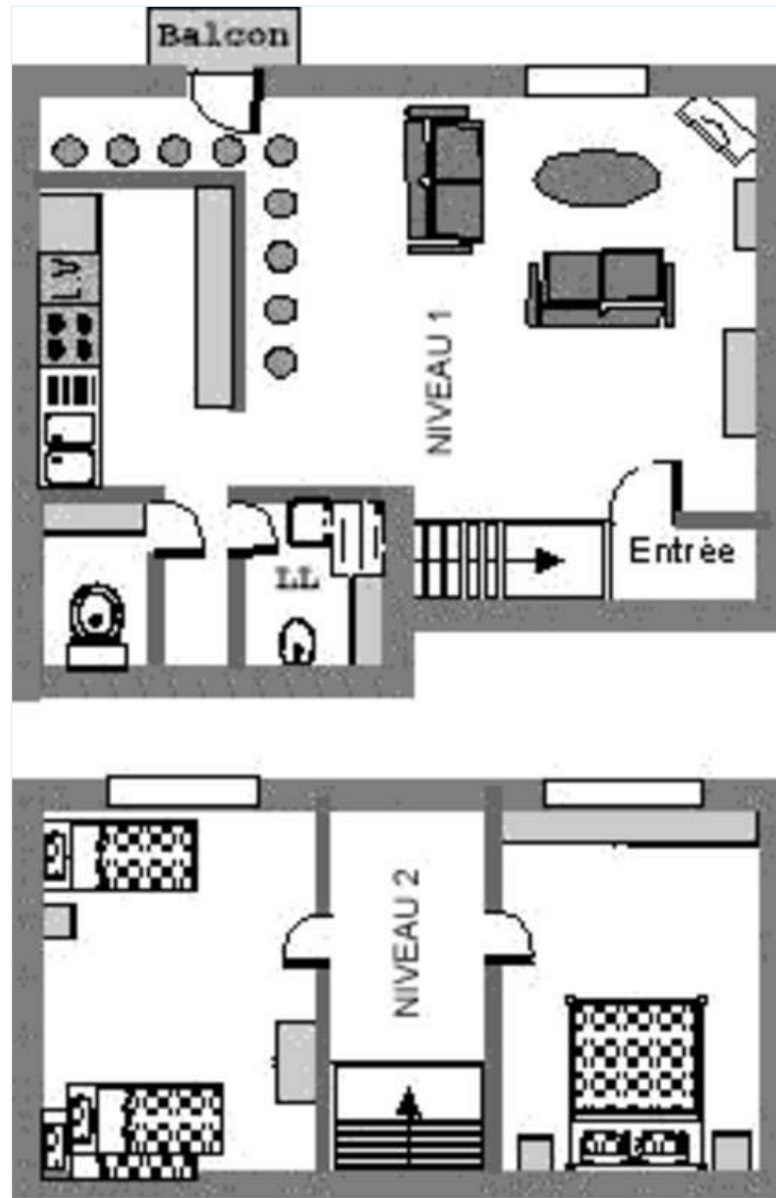


Internet
Holiday
Ads



DIRECT BY OWNERS

Floor plan



www.ihha.com

Photo album - 1



kitchen



sitting room

Photo album - 2



bathroom



bathroom

Location & Access



GPS coordinates in degrees, minutes, seconds: Latitude 44° 56'5.244"N - Longitude 6°35'12.552"E ([City](#))

Address

→ Le Prieure
05240 Serre Chevalier 1350 (Chantemerle)

• [Airport Torino Caselle](#)

→ Turin, Turin Province, Piedmont, Italy
→ Time : 2h

• [Railroad station Briançon](#)

→ Briançon, Upper Alpes, Provence Alpes Côte d'Azur (French Riviera), France
→ Time : 15'





• Briançon : Distance : 3mi.

Contact

Last Name	Miss CROS Nathalie
Address	CHalet l'Ourson Blanc, Chemin des Neyzets
City	05330 ST CHAFFREY
Country	France
Phone #	+33 (0) 492223387 (France)
Spoken languages	 



Rental rates - Duplex Apartment - 7 Person(s)

Rates	Night	Weekend	week	2 weeks	Month
 Low season	-	-	\$441 *	-	-
 Mid season	-	-	\$1133 *	-	-
 High season	-	-	\$2014 *	-	-
 Promotional period	-	-	\$629 *	-	-

[Book now](#)



Booking conditions

• **Reservation**

→ Payment made at time of reservation : 30% of rental sum
→ Payment balance : on return of keys
→ Deposit required : \$755 *

• **Rental**

→ Service charges to be added
→ Day tax in addition

[▶ Book now](#)

[▶ Contact the owner](#)

Accepted methods of payment

• International Money Order • Bank transfer (wire) • Check • Draft • Cash • Holiday coupon

Contact directly the property owners

www.iha.com
Advert No.
1958
>> Book now <<

Contact

Last Name Miss CROS Nathalie
Address CHalet l'Ourson Blanc,
Chemin des Neyzets
City 05330 ST CHAFFREY
Country France
Phone # +33 (0) 492223387
(France)

Spoken languages



* Converted at the rate indicated : €100 = \$125.87 = £80.11
Advert No. 1958

www.iha.com



Internet
Holiday
Ads



Internet
Holiday
Ads

