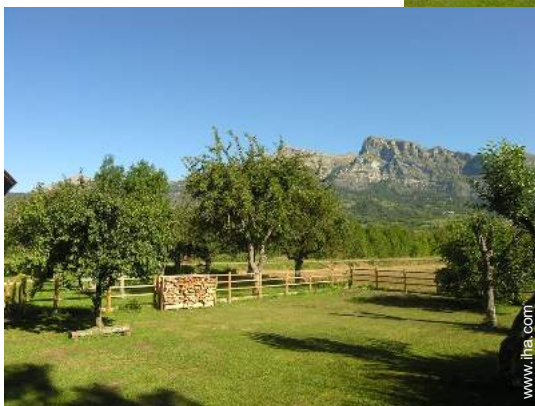


Gîte - Self Catering Écrins "Le Moulin du Serre"



Gîte - Self Catering - Farm,
detached, 1 floor, separate entrance,
in(on) a(an) Private property

Setting : mountainy, natural

Capacity : 9 person(s)

Bedroom(s) : 3

Room(s) : 5



Gîtes de France (2 ears)
Meublés de Tourisme (3 stars)

Saint Léger les Mèlèzes - Upper Alpes (05) - Provence Alpes Côte d'Azur (French Riviera)

France

Reservation : +33 (0) 6 66 92 96 36 (France)

Advert No. 76460

www.iha.com



>> VACATION RENTALS

Internet
Holiday
Ads



Internet
Holiday
Ads



DIRECT BY OWNERS

Gîte - Self Catering



Gîte - Self Catering - Farm, detached, 1 floor, separate entrance, in(on) a(an) Private property

- **Ideal for family groups, group**
- **View :** unobscured, mountain, country side, garden/park, farmland, prairie
- **Setting :** mountainy, natural
- **Exposure :** South-east

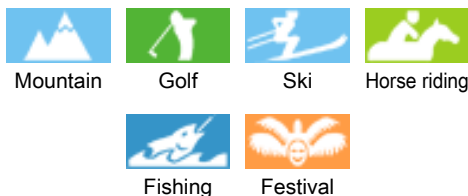
Goodies

- **Parking :**
Parking uncovered : 3 off road
- **Advantages :**
Ski locker, 4 bike(s)
- **baby equipment :**
High chair



Goodies

Surroundings & location



Leisure

- **Leisure activities less than 12 miles :**

Alpine skiing, cross-country skiing, off-piste skiing, snowboarding, skidoo, dogsledding, bathing, pedalo, canoeing, canyoning, rafting, golf, tennis, pathway/broadwalk, hiking, rappel, rock climbing, mountain bike (path), hang-gliding, paragliding, horse trekking, donkey rides, mini-golf, acrobanch, fishing, pétanque field

- **Supervised :**

Ski school, kids ski area, riding school

- **Attractions and relaxation :**

Bar/pub, discotheque, restaurant, zoo/ animal park, nature reserve, festivals

Surroundings

- **Locality :**

- Ski slopes 1.85mi.
- Heated swimming pool 12.5mi.
- Public swimming pool 12.5mi.
- Public tennis court 1.85mi.
- 9 hole golf course 9mi.
- 18 hole golf course 9mi.
- Watersports centre 1.85mi.
- River rapids 15.5mi.
- Waterfall 1.85mi.
- River 0.3mi.
- Stretch of water 1.85mi.
- Lake 12.5mi.
- Forest <165'
- Mountain range <165'
- Via ferrata/alpinism 4.5mi.

- **Amenities :**

- Village center 1.85mi.
- Downtown 1.85mi.
- Bike/mountain bike hire 1.85mi.
- Ski hire store 1.85mi.
- Breadstore 1.85mi.
- Caterer 1.85mi.
- Local stores 1.85mi.
- Supermarket 4.5mi.
- Hairdressing salon 1.85mi.
- Internet cafe 1.25mi.
- Mail office 1.85mi.
- Bank 1.85mi.
- ATM 1.85mi.
- Drugstore 1.85mi.
- Doctor 1.85mi.
- Hospital 12.5mi.



interior



Surroundings



cosy nook

Interior

- **Receive up to guest(s) :**

9 person(s)

- **Liveable floor area :**

1,300 Sq.ft.

- **Interior layout :**

5 Room(s), 3 bedroom(s), 2 shower room, 2 washroom, living room 380 Sq.ft., american style kitchen, dining room, cosy nook, mezzanine

- **Sleeps - bed(s) :**

2 full bed(s), 1 sleeper sofa(s) 2 pers, 3 twin bed(s)

- **Guest facilities :**

Fireplace, T.V., board games, book collection, cupboard, hair dryer, electric heating, skylights, Drapes, Double glazed

- **Appliances :**

Crockery/flatware, kitchen utensils, cafetiere, electric coffee maker, electric kettle, toaster, juicer, food processor, electric raclette set, fondue set, electric hobs, oven, micro-wave oven, extractor hood, refridgerator, deep freeze, dish washer, washing machine, vacuum cleaner, iron, ironing board

Exterior

- **Size of grounds :**

0.25 acre.

- **Outside accommodation :**

Terrace 215 Sq.ft.

- **Outside setting :**

Enclosed grounds 0.25 acre., yard 0.25 acre., creek

- **Outside amenities :**

Summer living area, pizza oven, BBQ, yard table(s), yard seat(s), parasol, 2 sun recliner (s)



Outside setting

Services

- **washing :**

Sheets supplement (1 X / per week +\$50 *), Comforter(s), Pillows

- **Single family home :**

Cleaning on departure supplement (+\$63 *), Snow clearance, Parking

For your guidance

- **For your guidance**

Kids welcome

Non smoking rental, cell phone network coverage, personal transport advisable

Water : hot/cold

Local voltage supply : 220-240V / 50Hz



general floor plan

Floor plan

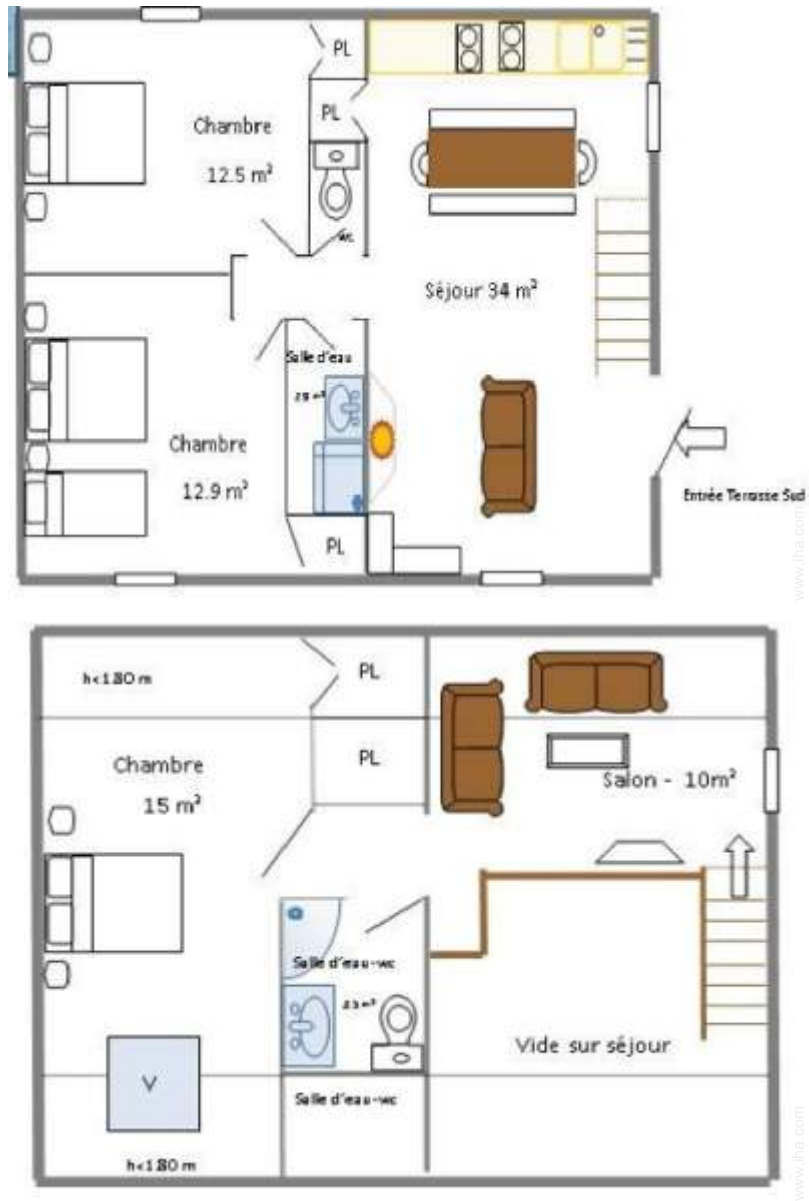


Photo album - 1



Surroundings



interior



Goodies



cosy nook



general floor plan

Advert No. 76460

www.ihacom.com



Internet
Holiday
Ads



Internet
Holiday
Ads



Photo album - 2



Outside setting



shower room



full bed(s)



full bed(s)

Photo album - 3



large bedroom



kitchen



Winter

Location & Access



GPS coordinates in degrees, minutes, seconds: Latitude 44° 38'37.356"N - Longitude 6°11'54.24"E ([City](#))

Address

→ Le Moulin du Serre
05260 Saint Léger les Mélèzes

• Freeway (exit) A51

→ Tallard, Upper Alpes, Provence Alpes Côte d'Azur (French Riviera), France
→ Distance : 21mi.
→ Time : 30'

• Airport Grenoble Isère

→ Grenoble, Isère, Rhône Alpes, France
→ Distance : 92mi.
→ Time : 1h30'

• Railroad station Gap

→ Gap, Upper Alpes, Provence Alpes Côte d'Azur (French Riviera), France
→ Distance : 15.5mi.
→ Time : 30'

- Pont du Fosse : Distance : 2.5mi.
- Gap : Distance : 15.5mi.
- Orcières Merlette : Distance : 9mi.

Contact

Last Name	Mr. ARNEODO Jean-Marc
Address	Le Moulin du Serre
City	05260 ST-LEGER-LES-MÉLEZES
Country	France
Cell phone #	+33 (0) 6 66 92 96 36 (France)
Spoken languages	



Gîte - Self Catering
Upper Alpes - Provence Alpes Côte d'Azur (French Riviera)
"Le Moulin du Serre"

9

[Book now](#)

Availability calendar - from : may 2012

May	Tu	W	Th	F	Sa	Su	M	Tu	W	Th	F	Sa	Su	M	Tu	W	Th	F	Sa	Su	M	Tu	W	Th	F	Sa	Su	M	Tu	W	Th	
2012	1	2	3	4	5	6	7	8	9	10	11	12	13	14	15	16	17	18	19	20	21	22	23	24	25	26	27	28	29	30	31	
																									-	-	-	-	-	-	-	-

June	F	Sa	Su	M	Tu	W	Th	F	Sa	Su	M	Tu	W	Th	F	Sa	Su	M	Tu	W	Th	F	Sa							
2012	1	2	3	4	5	6	7	8	9	10	11	12	13	14	15	16	17	18	19	20	21	22	23	24	25	26	27	28	29	30
	-	-	-	-	-	-	-	-	-	-	-	-	-	-	-	-	-	-	-	-	-	-	-	-	-	-	-	-	-	-

Jul	Su	M	Tu	W	Th	F	Sa	Su	M	Tu	W	Th	F	Sa	Su	M	Tu	W	Th	F	Sa	Su	M	Tu							
2012	1	2	3	4	5	6	7	8	9	10	11	12	13	14	15	16	17	18	19	20	21	22	23	24	25	26	27	28	29	30	31
	-	-	-	-	-	-	-	-	-	-	-	-	-	-	-	-	-	-	-	-	-	-	-	-	-	-	-	-	-	-	

■ High season

■ Reserved

[Month : Next >>](#)

Rental rates - Gîte - Self Catering - Farm - 9 Person(s)

Rates	Night	Weekend	week	2 weeks	Month
■ Low season	-	\$441 * (Friday)	\$566 * (Saturday)	-	-
■ Mid season	-	\$503 * (Friday)	\$1007 * (Saturday)	\$1888 * (Saturday)	\$3776 * (Saturday)
■ High season	-	\$566 * (Friday)	\$1007 * (Saturday)	\$1888 * (Saturday)	\$3776 * (Saturday)

(Check-in day)

[Book now](#)

Advert No. 76460

www.iha.com



Internet
Holiday
Ads



Internet
Holiday
Ads





Goodies



cosy nook



general floor plan



Surroundings



interior

Booking conditions

• Reservation

- Payment made at time of reservation : 25% of rental sum
- Payment balance : on return of keys
- Deposit required : \$378 *

• Rental

- Service charges to be added
- Day tax in addition
- Cleaning charge levy on departure : \$38 *
- Anticipated supplement for :
- firewood

[▶ Book now](#)

[▶ Contact the owner](#)

Contact directly the property owners

www.ihacom

Advert No.

76460

>> [Book now](#) <<

Accepted methods of payment

- Draft • Cash

Contact

Last Name	Mr. ARNEODO Jean-Marc
Address	Le Moulin du Serre
City	05260 ST-LEGER-LES-MÉLEZES
Country	France
Cell phone #	+33 (0) 6 66 92 96 36 (France)

Spoken languages



* Converted at the rate indicated : €100 = \$125.87 = £80.11

Advert No. 76460

www.ihacom



Internet
Holiday
Ads



Internet
Holiday
Ads

