

Vacation rental Comtat Venaissin "La Maison de Mayaric"



Mas - Farm House, detached, 1 floor, separate entrance, in(on) a(an) Private property

Setting : grape region, country setting

Capacity : 14 person(s)
Bedroom(s) : 6
Room(s) : 10

Villedieu - Vaucluse (84) - Provence Alpes Côte d'Azur (French Riviera)
France

Reservation : +32 (0) 84 31 40 71 (Belgium)



Advert No. 8085

www.ihha.com



Internet
Holiday
Ads



Internet
Holiday
Ads



Vacation rental



Mas - Farm House, detached, 1 floor, separate entrance, in(on) a(an) Private property

- **Ideal for large families, family groups**
- **View :** unobscured, not overlooked, country side, swimming pool, garden/park, Vineyards
- **Setting :** grape region, country setting
- **Exposure :** South

Goodies

- **Swimming pool :**

Private swimming pool, rectangular (length 40', width 18'), illuminated, step ladder, child secure, outside shower, pool house (open from 'june 01' till 'august 31')

- **Parking :**

Parking uncovered : 6 off road

Surroundings & location



Countryside

Leisure

- **Leisure activities less than 12 miles :**

Riding school, pathway/broadwalk, coastal/forest paths, hiking, flying (club), pétanque field

- **Supervised :**

Riding school

- **Attractions and relaxation :**

Discotheque, restaurant, movie theater, exhibition center, art gallery, historical site, museum, theater, festivals, antiques & bric-a-brac, local craftstore, cellar and wine tasting

Surroundings

- **Locality :**

- Public swimming pool 4.5mi.
- Public tennis court 0.62mi.
- River 0.93mi.
- Forest 0.62mi.

- **Amenities :**

- Village center 0.93mi.
- Downtown 4.5mi.
- Breadstore 0.93mi.
- Local stores 0.93mi.
- Mail office 0.93mi.



private swimming pool



kitchen



private courtyard

Advert No. 8085

www.iha.com



Internet
Holiday
Ads



Internet
Holiday
Ads





dining room

Interior

- **Receive up to guest(s) :**
14 person(s)
- **Liveable floor area :**
2,700 Sq.ft.
- **Interior layout :**
10 Room(s), 6 bedroom(s), 6 shower room, 7 washroom, living room 323 Sq.ft., sitting room 160 Sq.ft., large american style kitchen, dining room, dining area, cosy nook, tv den, reading room, laundry room
- **Sleeps - bed(s) :**
2 full bed(s), 8 twin bed(s), 1 bunk beds, 1 possible additional sleeping supplementary
- **Guest facilities :**
Fireplace, T.V., hi-fi system, vcr, book collection, t.v points, wardrobe, Hanging wardrobe, mobile cool air fan, central heating, Drapes, Double glazed, intruder alarm
- **Appliances :**
Crockery/flatware, kitchen utensils, electric coffee maker, electric kettle, toaster, juicer, food processor, electric stove, oven, microwave oven, extractor hood, refridgerator, deep freeze, dish washer, washing machine, vacuum cleaner, iron, ironing board

Exterior

- **Size of grounds :**
1.25 acre
- **Outside accommodation :**
Terrace 650 Sq.ft.
- **Outside setting :**
Private courtyard 650 Sq.ft., yard > 0.25 acre, lawn > 0.25 acre, woody 0.62 acre, fountain
- **Outside amenities :**
BBQ, yard table(s), 16 yard seat(s), arbour, yard seated area, 6 chaise(s) longue(s), climbing frame, outside shower facilities, outside water closet facilities



large bedroom

Services

- **Single family home :**
Cleaning on departure supplement (+\$88 *)

For your guidance

- **For your guidance**
Kids welcome
Non smoking rental, cell phone network coverage, personal transport advisable
Water : hot/cold
Local voltage supply : 220-240V / 50Hz
Electricity supply : mains



private swimming pool

Floor plan

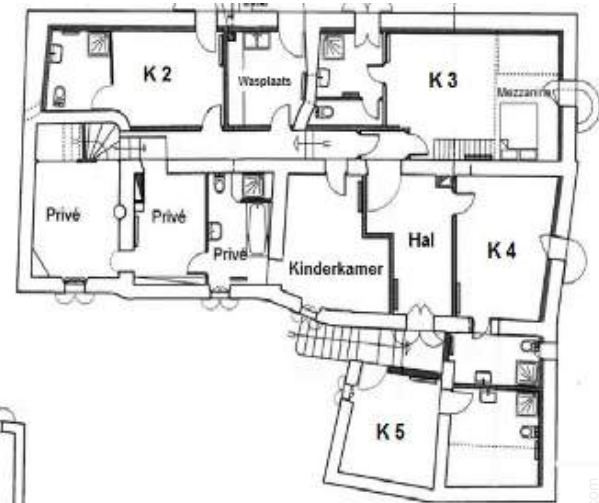
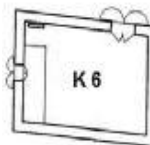
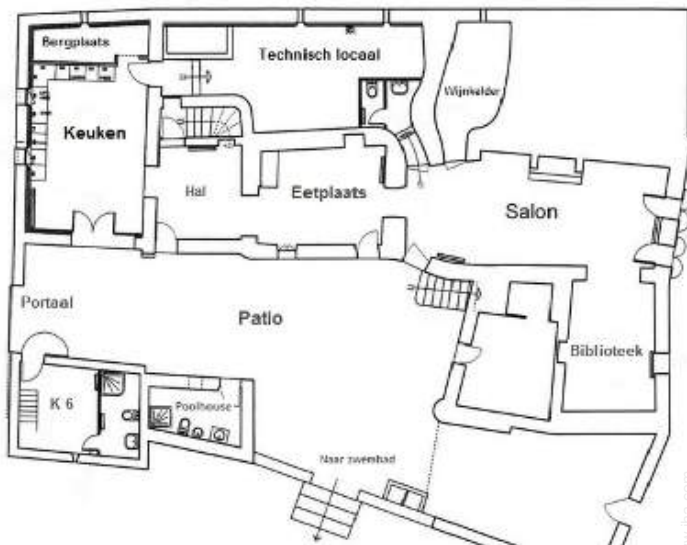
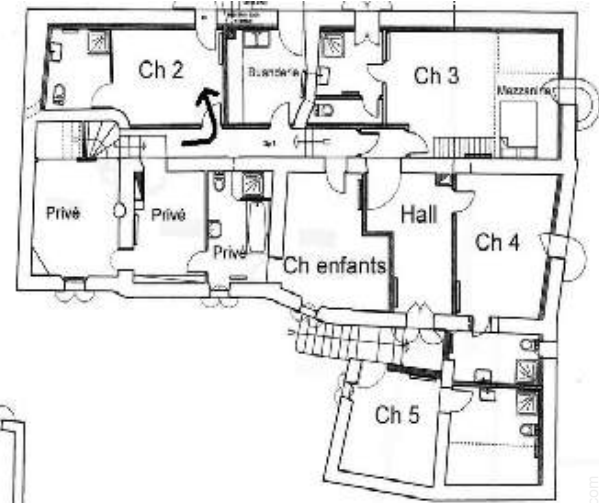
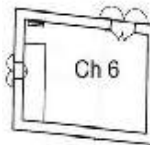
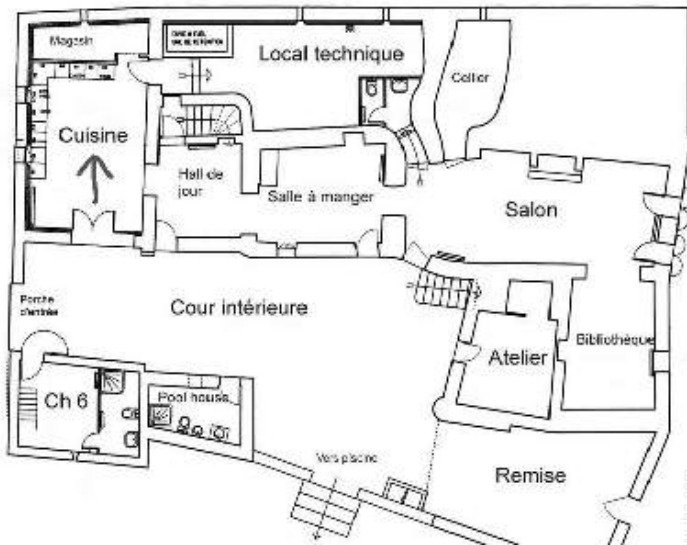


Photo album - 1



private courtyard



private swimming pool



kitchen



dining room



private swimming pool

Photo album - 2



large bedroom



bedroom



terrace



sitting room



tv den



reading room



private swimming pool



view over the countryside



panorama

Location & Access



GPS coordinates in degrees, minutes, seconds: Latitude 44° 17'16.31"N - Longitude 5°3'1.81"E ([Dwelling](#))

Address

→ St Laurent
84110 Villedieu

• Freeway (exit) Sortie 18

→ Montélimar, Drôme, Rhône Alpes, France
→ Distance : 31mi.
→ Time : 50'

• Freeway (exit) Sortie 19

→ Bollène, Vaucluse, Provence Alpes Côte d'Azur (French Riviera), France
→ Distance : 25mi.
→ Time : 30'

- Vaison la Romaine : Distance : 3mi.
- Orange : Distance : 15.5mi.
- Avignon : Distance : 37,3mi.

Contact

Last Name	Mr. Mrs. QUETTIER Eric
Address	Rue Pimpernelle 6
City	6900 MARCHE EN FAMENNE
Country	Belgium
Phone #	+32 (0) 84 31 40 71 (Belgium)
Fax #	+32 (0) 84 31 40 71 (Belgium)

Spoken languages 



Vacation rental
Comtat Venaissin - France
"La Maison de Mayaric"


8
[Book now](#)

Availability calendar - from : may 2012

May	Tu	W	Th	F	Sa	Su	M	Tu	W	Th	F	Sa	Su	M	Tu	W	Th	F	Sa	Su	M	Tu	W	Th	F	Sa	Su	M	Tu	W	Th		
2012	1	2	3	4	5	6	7	8	9	10	11	12	13	14	15	16	17	18	19	20	21	22	23	24	25	26	27	28	29	30	31		



June	F	Sa	Su	M	Tu	W	Th	F	Sa	Su	M	Tu	W	Th	F	Sa	Su	M	Tu	W	Th	F	Sa								
2012	1	2	3	4	5	6	7	8	9	10	11	12	13	14	15	16	17	18	19	20	21	22	23	24	25	26	27	28	29	30	
	-	-	-	-	-	-	-	-	-	-	-	-	-	-	-	-	-	-	-	-	-	-	-	-	-	-	-	-	-	-	-

Jul	Su	M	Tu	W	Th	F	Sa	Su	M	Tu	W	Th	F	Sa	Su	M	Tu	W	Th	F	Sa	Su	M	Tu							
2012	1	2	3	4	5	6	7	8	9	10	11	12	13	14	15	16	17	18	19	20	21	22	23	24	25	26	27	28	29	30	31
	-	-	-	-	-	-	-	-	-	-	-	-	-	-	-	-	-	-	-	-	-	-	-	-	-	-	-	-	-	-	-

 Reserved  Mid season

[Month : Next >>](#)

Rental rates - Mas - Farm House - 14 Person(s)

Rates	Night	Weekend	week	2 weeks	Month
 Mid season	\$82 *	-	-	-	-
 High season	-	-	\$3650 * (Saturday)	-	-

(Check-in day)

[Book now](#)





kitchen



dining room



private swimming pool



private courtyard



private swimming pool

Booking conditions

• **Reservation**

- Payment made at time of reservation : 25% of rental sum
- Payment balance : 1 month before the stay
- Deposit required : \$629 *

• **Rental**

- Service charges included
- Day tax in addition
- Cleaning charge levy on departure : \$189 *

[▶ Book now](#)

[▶ Contact the owner](#)

Accepted methods of payment

- Bank transfer (wire) • Check

Contact directly the property owners

www.ihacom.com
Advert No.
8085
>> Book now <<

Contact

Last Name	Mr. Mrs. QUETTIER Eric
Address	Rue Pimpernelle 6
City	6900 MARCHE EN FAMENNE
Country	Belgium
Phone #	+32 (0) 84 31 40 71 (Belgium)
Fax #	+32 (0) 84 31 40 71 (Belgium)

Spoken languages



* Converted at the rate indicated : €100 = \$125.87 = £80.11
 Advert No. 8085

www.ihacom.com



>> VACATION RENTALS

Internet
 Holiday
 Ads



Internet
 Holiday
 Ads



DIRECT BY OWNERS