

# Vacation rental Maurienne "NORMALIE"



**Chalet**, detached, 1 floor, separate entrance, in(on) a(an) Private estate

Setting : mountainy, calm

Capacity : 12 person(s)

Bedroom(s) : 4

Room(s) : 6



Clé vacances (3 keys)

La Norma - Savoy (73) - Rhône Alpes

France

Reservation : +33 (0) 139562600 (France)

Advert No. 40763

www.iha.com



>> VACATION RENTALS

Internet  
Holiday  
Ads



Internet  
Holiday  
Ads



DIRECT BY OWNERS

### Vacation rental



Chalet, detached, 1 floor, separate entrance, in(on) a(an) Private estate

- **Ideal for large families, all age groups**
- **View :** panoramic, unobscured, not overlooked, dominant, river, nightlights
- **Setting :** mountainy, calm
- **Exposure :** South

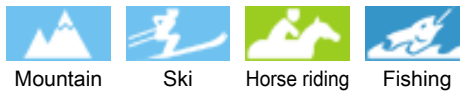
### Goodies

- **Advantages :**  
Ski locker, pétanque field
- **baby equipment :**  
High chair, infant tub



General

### Surroundings & location



#### Leisure

- **Leisure activities less than 12 miles :**

Alpine skiing, cross-country skiing, off-piste skiing, snowboarding, luge (run), ice-skating, dogsledding, bathing, canyoning, tennis, pony club, pathway/broadwalk, coastal/forest paths, hiking, rappel, rock climbing, mountain bike (path), parascending, parachuting, hang-gliding, paragliding, horse trekking, donkey rides, mini-golf, ATV/Quad Bike, ten-pin bowling, volleyball, acrobatics, fishing, pétanque field

- **Supervised :**

Ski school, kids ski area

- **Attractions and relaxation :**

Bar/pub, discotheque, restaurant, movie theater, art gallery, historical site, museum, sauna, steam baths, health spa, fitness center

#### Surroundings

- **Locality :**

- Ski slopes 990'
- Ski lifts 0.5mi.
- Ice skating rink 0.62mi.
- Public swimming pool 3mi.
- Public tennis court 0.62mi.
- Waterfall 165'
- Cliff 330'
- River <165'
- Stretch of water 0.62mi.
- Lake 0.62mi.
- Forest <165'
- Mountain range <165'
- Via ferrata-alpinism 3mi.

- **Amenities :**

- Village center 0.3mi.
- Bus stop / bus station 0.62mi.
- Bike/mountain bike hire 0.5mi.
- Ski hire store 0.5mi.
- Breadstore 0.5mi.
- Local stores 0.5mi.
- Supermarket 3mi.
- Hairdressing salon 3mi.
- Internet cafe 3mi.
- Mail office 0.3mi.
- Bank 0.3mi.
- ATM 0.3mi.
- Drugstore 3mi.
- Doctor 0.3mi.
- Nurse 3mi.
- Hospital 18.5mi.



Single family home



Winter



Winter

### Exterior

- **Size of grounds :**  
2,150 Sq.ft.
- **Outside accommodation :**  
Terrace 430 Sq.ft., balcony 215 Sq.ft.
- **Outside setting :**  
Yard 2,150 Sq.ft., woody > 25 acres, river, waterfall
- **Outside amenities :**  
BBQ, yard table(s), 13 yard seat(s), parasol, yard seated area, 6 chaise(s) longue(s), 2 sun recliner(s), child's swing



Summer

### Interior

- **Receive up to guest(s) :**  
12 person(s)
- **Liveable floor area :**  
1,076 Sq.ft.
- **Interior layout :**  
6 Room(s), 4 bedroom(s), 1 bathroom, 1 shower room, 2 washroom, living room 160 Sq.ft., sitting room 110 Sq.ft., large american style kitchen, dining room, walk-in closet, pantry
- **Sleeps - bed(s) :**  
2 full bed(s), 2 sleeper sofa(s) 2 pers, 2 bunk beds, 1 guest folding bed(s) 1 pers, 2 twin storage bed 1 pers, 1 baby cradle, 1 camp bed(s)
- **Guest facilities :**  
T.V., hi-fi system, DVD player, board games, t.v points, internet access, high speed internet access, wifi (wireless internet access), wardrobe, cupboard, Hanging wardrobe, radio alarmclock, heated towel rail, electric heating, Glazed in area, Drapes, Double glazed, electric shutters
- **Appliances :**  
Crockery/flatware, kitchen utensils, cafetiere, electric coffee maker, electric kettle, toaster, juicer, food processor, pancake maker, electric raclette set, meat broiler, electric hobs, oven, micro-wave oven, electric fries fryer, extractor hood, refridgerator, deep freeze, dish washer, washing machine, vacuum cleaner, iron, ironing board

### Services

- **washing :**  
Sheets supplement (1 X / per week +\$25 \*), Towels supplement (1 X / per week +\$19 \*), Linen supplement (1 X / per week +\$13 \*), Comforter(s), Comforter(s), Pillows
- **Single family home :**  
Serviced supplement (1 X / per week + \$157 \*), Cleaning on departure, Snow clearance, Caretaker/concierge, Parking, Airport transfers supplement
- **Personnel :**  
Baby sitting supplement, Beauty treatments supplement, Massage supplement, Guide supplement, Entertainer supplement
- **Restauration :**  
Breakfast supplement, Locally produced meals supplement, Picnic basket supplement

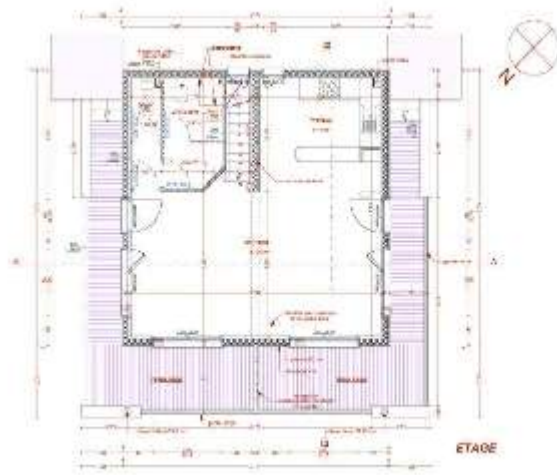
### For your guidance

- **For your guidance**  
Kids welcome  
Non smoking rental, cell phone network coverage  
Water : hot/cold  
Local voltage supply : 220-240V / 50Hz  
Electricity supply : mains

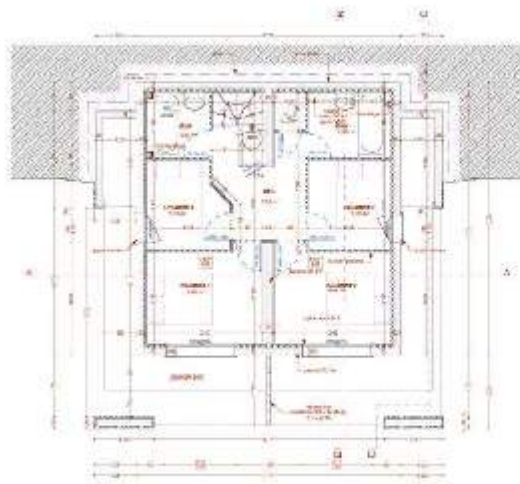


balcony

Floor plan



www.ihh.com



www.ihh.com

Advert No. 40763

www.ihh.com



>> VACATION RENTALS

Internet  
Holiday  
Ads



Internet  
Holiday  
Ads



DIRECT BY OWNERS

Photo album - 1



Winter



Single family home



General



Winter



balcony

Photo album - 2



Summer



Summer



view from the garden/park



view from the house



yard



kitchen



kitchen



Interior layout and facilities



sitting room



sitting room



sitting room



sitting room

Photo album - 3



interior



kitchen



dining room



dining room



master bedroom



large bedroom



bedroom



bathroom



bathroom



shower room



small bedroom



small bedroom

Advert No. 40763

[www.ihacom.com](http://www.ihacom.com)



Internet  
Holiday  
Ads



Internet  
Holiday  
Ads



### Route map



### Location & Access



GPS coordinates in degrees, minutes, seconds: Latitude 45° 12'6"N - Longitude 6°42'11"E (Dwelling)

#### Address

→ Chalet N°100  
chemin Meyer  
73500 La Norma

#### • Freeway (exit) A43

→ La Norma, Savoy, Rhône Alpes, France  
→ Distance : 4.5mi.  
→ Time : 10'

#### • Railroad station Modane

→ Modane, Savoy, Rhône Alpes, France  
→ Distance : 3mi.  
→ Time : 5'

#### • Bus station MODANE

→ Modane, Savoy, Rhône Alpes, France  
→ Distance : 3mi.  
→ Time : 10'

- Val Thorens : Distance : 9mi.
- Turin : Distance : 62mi.
- Modane : Distance : 3mi.

### Contact

Last Name	Mr. DEFEVES Philippe NORMALIE
Address	5 RUE DU PROFESSEUR VINCENT
City	78530 BUC
Country	France
Phone #	+33 (0) 139562600 (France) From 07:00 AM to 10:00 PM (GMT/UTC +01:00)
Cell phone #	+33 (0) 608811919 (France)
Fax #	+33 (0) 139569600 (France)
Spoken languages	



Vacation rental  
Savoy - Rhône Alpes  
"NORMALIE"

[Book now](#)

Availability calendar - from : may 2012

May	Tu	W	Th	F	Sa	Su	M	Tu	W	Th	F	Sa	Su	M	Tu	W	Th	F	Sa	Su	M	Tu	W	Th	F	Sa	Su	M	Tu	W	Th	
2012	1	2	3	4	5	6	7	8	9	10	11	12	13	14	15	16	17	18	19	20	21	22	23	24	25	26	27	28	29	30	31	

June	F	Sa	Su	M	Tu	W	Th	F	Sa	Su	M	Tu	W	Th	F	Sa	Su	M	Tu	W	Th	F	Sa							
2012	1	2	3	4	5	6	7	8	9	10	11	12	13	14	15	16	17	18	19	20	21	22	23	24	25	26	27	28	29	30
	-	-	-	-	-	-	-	-	-	-	-	-	-	-	-	-	-	-	-	-	-	-	-	-	-	-	-	-	-	-





  

Jul	Su	M	Tu	W	Th	F	Sa	Su	M	Tu	W	Th	F	Sa	Su	M	Tu	W	Th	F	Sa	Su	M	Tu							
2012	1	2	3	4	5	6	7	8	9	10	11	12	13	14	15	16	17	18	19	20	21	22	23	24	25	26	27	28	29	30	31
	-	-	-	-	-	-	-	-	-	-	-	-	-	-	-	-	-	-	-	-	-	-	-	-	-	-	-	-	-	-	

 Reserved  Low season

[Month : Next >>](#)

Rental rates - Chalet - 12 Person(s)

Rates	Night	Weekend	week	2 weeks	Month
 Low season	-	-	\$661 *	-	-
 Mid season	-	-	\$1668 * (Saturday)	-	-
 High season	-	-	\$3682 * (Saturday)	-	-
 Festive specials	-	-	\$4311 * (Saturday)	-	-
 Promotional period	-	-	\$3682 * (Saturday)	-	-

(Check-in day)

[Book now](#)





General



Winter



balcony



Winter



Single family home

### Booking conditions

#### • Reservation

- Payment made at time of reservation : 35% of rental sum
- Payment balance : 1 month before the stay
- Deposit required : \$1259 \*

#### • Rental

- Service charges included
- Day tax included
- Cleaning charge levy on departure : \$94 \*

[▶ Book now](#)

[▶ Contact the owner](#)

### Accepted methods of payment

- Bank transfer (wire)
- Check
- Cash
- Holiday coupon

Contact directly the property owners



[www.ihacom.com](http://www.ihacom.com)

Advert No.

40763

[>> Book now <<](#)

### Contact

Last Name	Mr. DEFEVES Philippe NORMALIE
Address	5 RUE DU PROFESSEUR VINCENT
City	78530 BUC
Country	France
Phone #	+33 (0) 139562600 (France) From 07:00 AM to 10:00 PM (GMT/UTC +01:00)
Cell phone #	+33 (0) 608811919 (France)
Fax #	+33 (0) 139569600 (France)
Spoken languages	 

\* Converted at the rate indicated : €100 = \$125.87 = £80.11

Advert No. 40763

[www.ihacom.com](http://www.ihacom.com)



Internet  
Holiday  
Ads



Internet  
Holiday  
Ads

