

Vacation rental Baie aux Tortues "Résidence Le pimpin"



Aparthotel first floor, separate entrance, in(on) a(an) Apartment hotel

Setting : heavenly, quiet

Capacity : 4 person(s)

Bedroom(s) : 2

Room(s) : 5



Eco-tourisme
Meublés de Tourisme (1 star)

Gravier - Rodrigues Island

Mauritius

Advert No. 10303

www.iha.com



Internet
Holiday
Ads



Internet
Holiday
Ads



Vacation rental



Aparthotel first floor, separate entrance, in (on) a(an) Apartment hotel

- **Ideal for couples, family**
- **View :** panoramic, dominant, sea/ocean, mountain, farmland, village
- **Setting :** heavenly, quiet
- **Exposure :** South-east

Goodies

- **Parking :**
Parking uncovered : 3 internal, 2 off road
- **Advantages :**
6 bike(s), courtesy car, SUV vehicle, motor boat, sailing boat

Benefits :
Direct access to the beach



view from the terrace

Surroundings & location



- Leisure**
- **Leisure activities less than 12 miles :**
Bathing, snorkelling, scuba diving, windsurfing, sailing, kite surfing, hiking, mountain bike (path), boat trips, fishing, deep-sea fishing, fishing
 - **Supervised :**
Sailing school, dive school
 - **Attractions and relaxation :**
Sea world, nature reserve, local craftstore

Surroundings

- **Locality :**
 - Sea/ocean 660'
 - Sandy beach 660'
 - Sea inlet 0.62mi.
 - Windsurfing spots 660'
 - Watersports centre 660'
 - Forest 2.5mi.
 - Mountain range 1.25mi.
- **Amenities :**
 - Kindergarten <165'
 - Village center 330'
 - Downtown 4.5mi.
 - Bus stop / bus station 330'
 - Bike/mountain bike hire <165'
 - Scooter/motorbike hire <165'
 - Car rental <165'
 - Boat rental <165'
 - Scuba diving material hire 0.62mi.
 - Household linens for hire/laundry services <165'
 - Local stores 330'
 - Hairdressing salon 2.5mi.
 - Internet cafe 4.5mi.
 - Mail office 2.5mi.
 - Bank 3mi.
 - ATM 3mi.
 - Drugstore 4.5mi.
 - Doctor 3mi.
 - Nurse 4.5mi.
 - Hospital 4.5mi.
 - Dispensary 1.85mi.



sandy beach



Single family home



view from the covered terrace

Interior

- **Receive up to guest(s) :**
4 person(s) - 4 adults
- **Liveable floor area :**
1,300 Sq.ft.
- **Interior layout :**
5 Room(s), 2 bedroom(s), 2 shower room, 2 washroom, living room, sitting room, american style kitchen, dining room, tv den, bar area
- **Sleeps - bed(s) :**
1 full bed(s), 2 twin bed(s), 1 sleeper sofa(s)
1 pers, 1 baby cradle
- **Guest facilities :**
T.V., DVD player, board games, t.v points, phone, cable/satelite, cupboard, Hanging wardrobe, safe deposit box, radio alarmclock, partly air-conditioned, Drapes
- **Appliances :**
Crockery/flatware, kitchen utensils, cafetiere, electric kettle, gaz stove, electric hobs, mini-oven, micro-wave oven, refridgerator, deep freeze, ice maker, clothes dryer, iron

Exterior

- **Size of grounds :**
4,300 Sq.ft.
- **Outside accommodation :**
Terrace 300 Sq.ft., covered terrace 300 Sq.ft.
- **Outside setting :**
Private courtyard 4,300 Sq.ft., creek
- **Outside amenities :**
Outside shower facilities



view from the terrace

Services

- **washing :**
Sheets (3 X / per week), Comforter(s) (3 X / per week), Comforter(s), Pillows (3 X / per week)
- **Single family home :**
Serviced (3 X / per week), Cleaning on departure, Parking, Airport transfers supplement (+\$24 *)
- **Personnel :**
Staff, Chef(s) supplement, Chauffeur supplement (+\$18 *), Laundry supplement (6 X / per week +\$13 *), Baby sitting supplement, Beauty treatments supplement, Massage supplement, Guide supplement (+\$18 *), Entertainer supplement
- **Restauration :**
Breakfast supplement (+\$6 *), Guest table supplement (4 X / per week +\$16 *), BBQ meal supplement (4 X / per week +\$16 *), Half board supplement (+\$16 *), Full board supplement (+\$29 *), Locally produced meals supplement (4 X / per week +\$16 *), Picnic basket supplement (+\$16 *)

For your guidance

- **For your guidance**
Cell phone network coverage, personal transport advisable
Water : hot/cold
Local voltage supply : 220-240V / 50Hz



north-easterly view

Floor plan

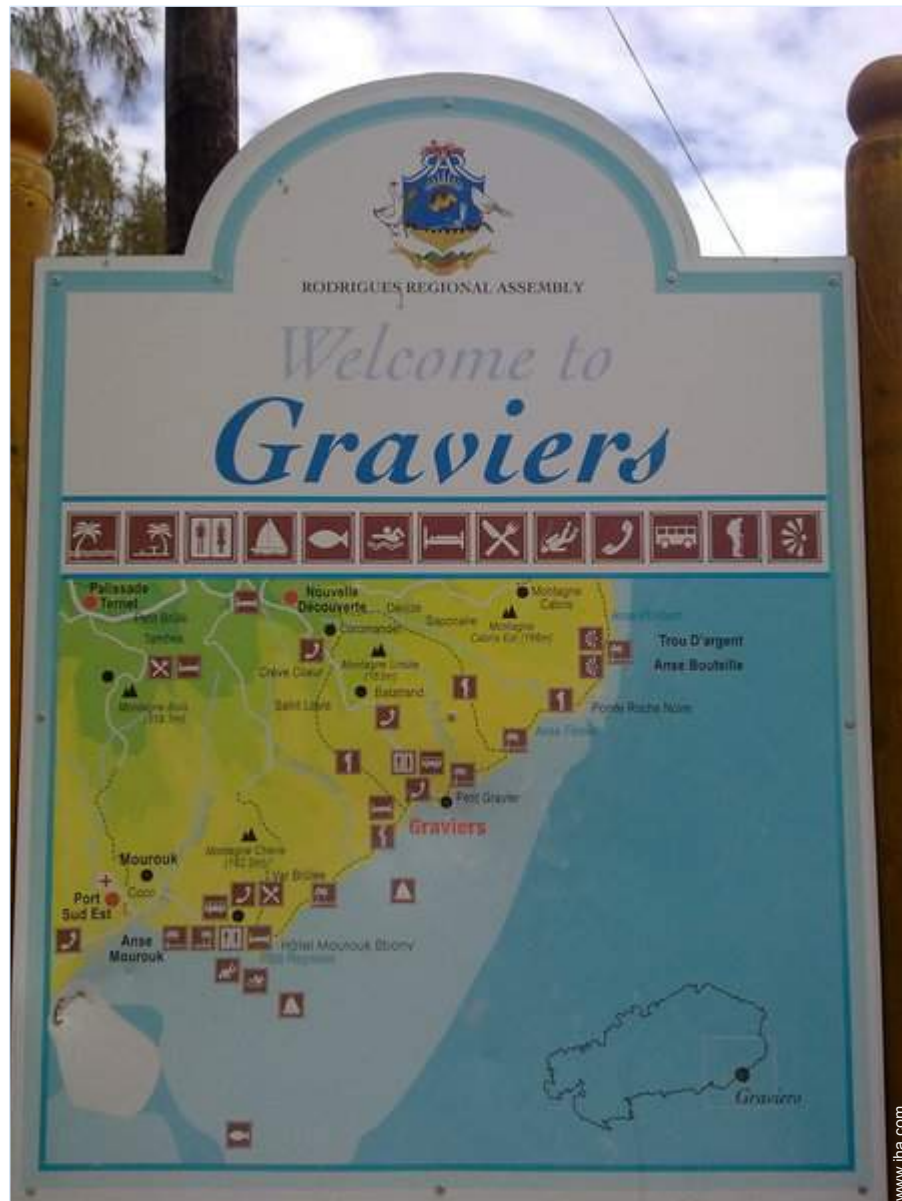


Photo album - 1



Single family home



sandy beach



view from the terrace



view from the covered terrace



north-easterly view

Advert No. 10303

www.ihacom.com



Internet
Holiday
Ads



Internet
Holiday
Ads



Photo album - 2



view from the terrace



view from the covered terrace



Single family home



bedroom



bedroom



bedroom



kitchen



bar area

Photo album - 3



shower room



bus stop / bus station



bus stop / bus station



local stores



local stores



watersports nearby



windsurfing spots

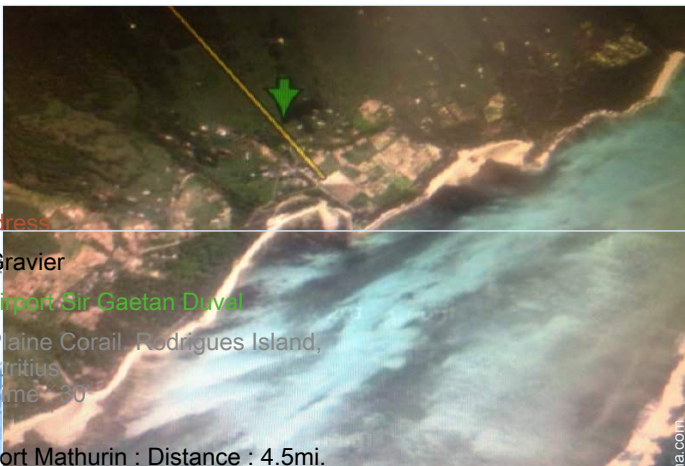
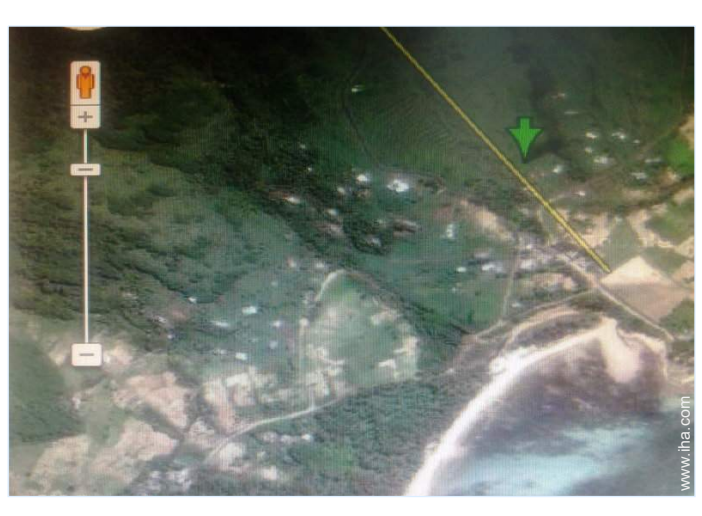
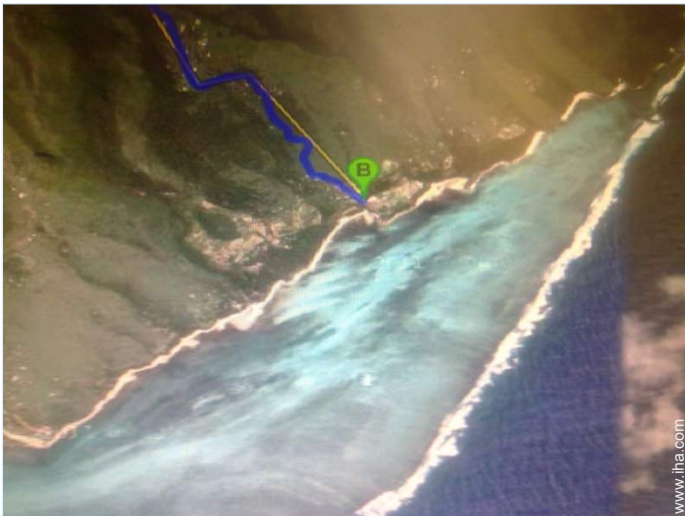
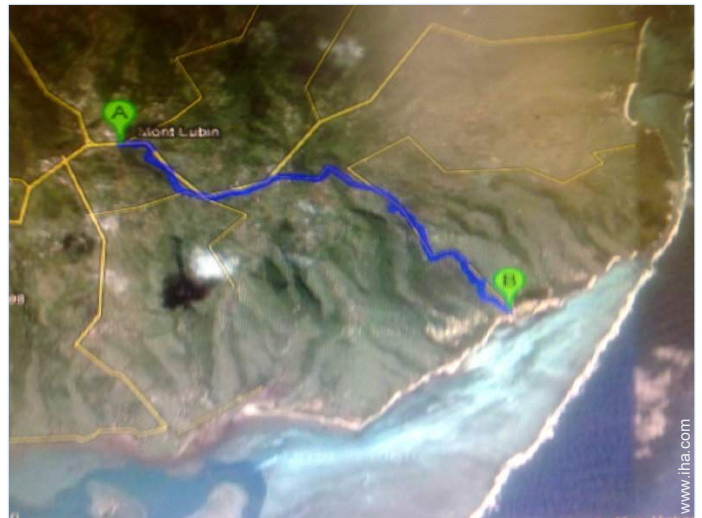
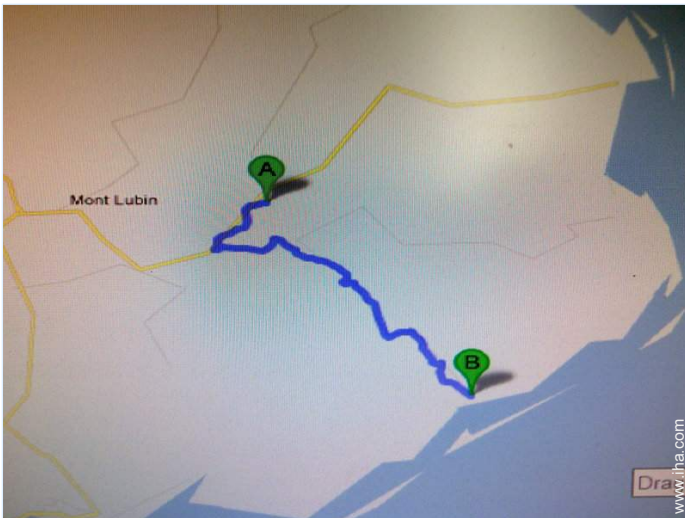
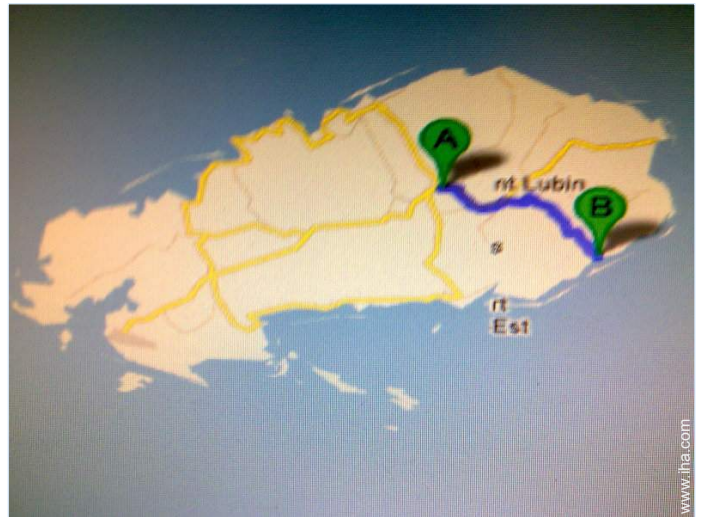
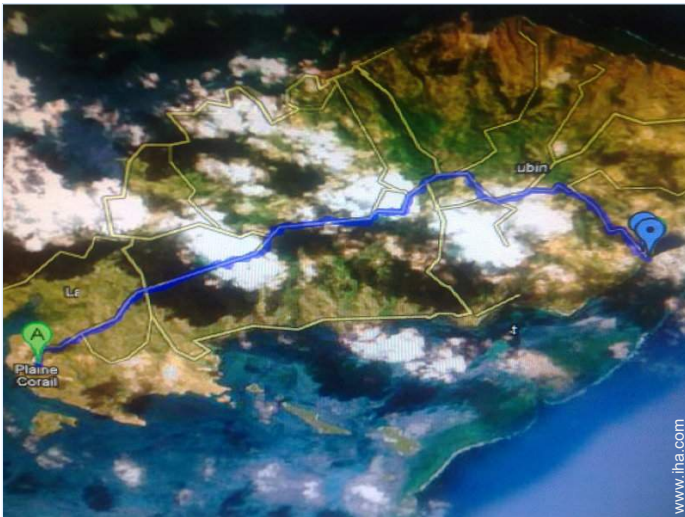


kite surfing



kite surfing

Route map



Address

Ad Gravier

• [Aéroport Sir Gaetan Duval](#)

→ Plaine Corail, Rodrigues Island,
Mauritius

→ Time: 30'

Port Mathurin : Distance : 4.5mi.

ha.com



Internet
Holiday
Ads

DIRECT BY OWNERS



Vacation rental
Gravier - Baie aux Tortues
"Résidence Le pimpin"

9

[Book now](#)

Availability calendar - from : may 2012

May	Tu	W	Th	F	Sa	Su	M	Tu	W	Th	F	Sa	Su	M	Tu	W	Th	F	Sa	Su	M	Tu	W	Th	F	Sa	Su	M	Tu	W	Th	
2012	1	2	3	4	5	6	7	8	9	10	11	12	13	14	15	16	17	18	19	20	21	22	23	24	25	26	27	28	29	30	31	

June	F	Sa	Su	M	Tu	W	Th	F	Sa	Su	M	Tu	W	Th	F	Sa	Su	M	Tu	W	Th	F	Sa							
2012	1	2	3	4	5	6	7	8	9	10	11	12	13	14	15	16	17	18	19	20	21	22	23	24	25	26	27	28	29	30
	-	-	-	-	-	-	-	-	-	-	-	-	-	-	-	-	-	-	-	-	-	-	-	-	-	-	-	-	-	-

Jul	Su	M	Tu	W	Th	F	Sa	Su	M	Tu	W	Th	F	Sa	Su	M	Tu	W	Th	F	Sa	Su	M	Tu							
2012	1	2	3	4	5	6	7	8	9	10	11	12	13	14	15	16	17	18	19	20	21	22	23	24	25	26	27	28	29	30	31
	-	-	-	-	-	-	-	-	-	-	-	-	-	-	-	-	-	-	-	-	-	-	-	-	-	-	-	-	-	-	

■ Low season ■ Reserved

[Month : Next >>](#)

Rental rates - Aparthotel - 4 Person(s)

Rates	Night	Weekend	week	2 weeks	Month
■ Low season	\$44 * ↓ > 3	-	-	-	-
■ Mid season	\$50 * > 3	-	-	-	-
■ High season	\$57 * > 3	-	-	-	-

↓ Reducing rates > Minimum Night

[Book now](#)

Advert No. 10303

www.iha.com



Internet
Holiday
Ads



Internet
Holiday
Ads





view from the terrace



view from the covered terrace



north-easterly view



Single family home



sandy beach

Booking conditions

• **Reservation**

→ Payment made at time of reservation :
30% of rental sum

Accepted methods of payment

• Bank transfer (wire) • Cash

► [Book now](#)

► [Contact the owner](#)

Contact directly the property owners

www.ihacom.com
Advert No.
10303
>> [Book now](#) <<

Contact

Last Name	Mr. BEGUE Jean Ludovic LUDOVIC TOURS
Address	li'le rodrigues
City	PORT MATHURIN
Country	Mauritius
Phone #	+230 8311582 (Mauritius)
Cell phone #	+230 8770083 (Mauritius)
Cell phone2 #	+230 9800353 (Mauritius)

Spoken
languages



* Converted at the rate indicated : €100 = \$125.87 = £80.11

Advert No. 10303

www.ihacom.com



>> VACATION RENTALS

Internet
Holiday
Ads



Internet
Holiday
Ads



DIRECT BY OWNERS