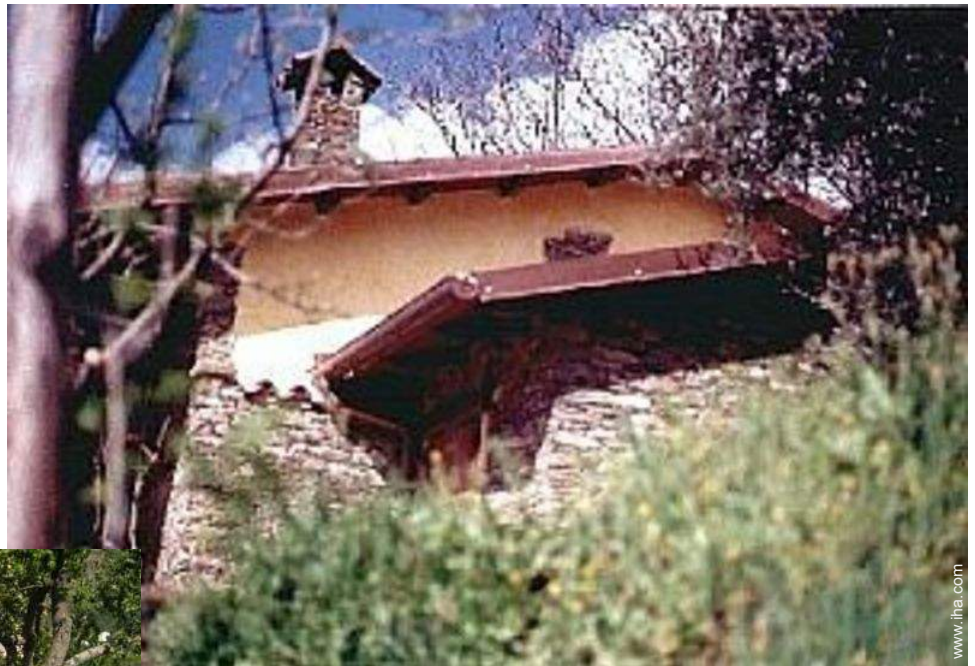


# Luxury vacation rental Barbagia "Su foxile"



Luxury Mountain Chalet, detached, single storey, separate entrance, in (on) a(an) Property

Setting : enchanting, romantic

Capacity : 6 person(s)

Bedroom(s) : 2

Room(s) : 2

Aritzo - Nuoro Province (NU) - Sardinia

Italy

Advert No. 3322

[www.iha.com](http://www.iha.com)



Internet  
Holiday  
Ads



Internet  
Holiday  
Ads



### Luxury vacation rental



Luxury Mountain Chalet, detached, single storey, separate entrance, in(on) a(an) Property

- **Ideal for all age groups, couples**
- **View :** panoramic, country side, swimming pool, garden/park, forest, village
- **Setting :** enchanting, romantic
- **Exposure :** South

### Goodies

- **Swimming pool :**  
Private swimming pool, rectangular (length 21.5', width 13'), cascading, step ladder, plunge pool, outside shower (open from 'may 01' till 'september 30')
- **Parking :**  
Parking uncovered : 2 off road
- **Advantages :**  
2 bike(s)
- **baby equipment :**  
High chair



view from the swimming pool

### Surroundings & location



Mountain



Horse riding

#### Leisure

- **Leisure activities less than 12 miles :**

Off-piste skiing, bathing, tennis, riding school, hiking, horse trekking, clay pigeon shooting, hunting, big game hunting, pétanque field

- **Supervised :**

Riding school

- **Attractions and relaxation :**

Bar/pub, restaurant, park and garden, nature reserve, exhibition center, historical site, museum

#### Surroundings

- **Locality :**

- Ski slopes 9mi.
- Sandy beach >31mi.
- Public tennis court 0.93mi.
- Lake 25mi.
- Forest 165'
- Mountain range 165'

- **Amenities :**

- Village center 990'
- Breadstore 0.5mi.
- Local stores 0.5mi.
- Supermarket 0.5mi.
- Hairdressing salon 0.5mi.
- Mail office 0.62mi.
- Bank 0.3mi.
- Drugstore 0.62mi.
- Doctor 0.62mi.
- Nurse 0.62mi.
- Dispensary 0.62mi.



General



pool view



façade

### Interior

- **Receive up to guest(s) :**

6 person(s) - 4 adults, 2 kids

- **Liveable floor area :**

650 Sq.ft.

- **Interior layout :**

2 Room(s), 2 bedroom(s), 2 bathroom, 2 shower room, 2 washroom, living room, sitting room, kitchenette, cosy nook, veranda

- **Sleeps - bed(s) :**

2 full bed(s), 2 possible additional sleeping supplementary

- **Guest facilities :**

Fireplace, T.V., t.v points, computer, cable/satelite, wardrobe, hair dryer, fly screens, electric heating, wood-burning stove, Glazed in area, Double glazed

- **Appliances :**

Crockery/flatware, kitchen utensils, cafetiere, electric espresso coffee maker, meat broiler, gaz stove, micro-wave oven, extractor hood, refridgerator, vacuum cleaner, iron, ironing board

### Exterior

- **Size of grounds :**

1.25 acre

- **Outside accommodation :**

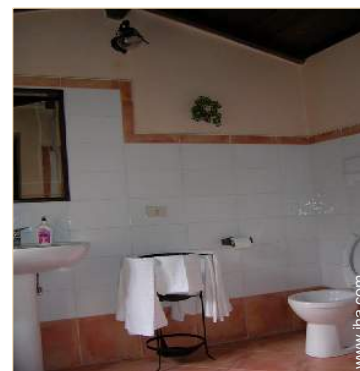
Covered terrace 380 Sq.ft., yard shed, lanai 410 Sq.ft.

- **Outside setting :**

Private courtyard, enclosed grounds, yard 0.25 acre., orchard 0.37 acre, kitchen garden 9,700 Sq.ft.

- **Outside amenities :**

BBQ, gaz BBQ, yard table(s), 6 yard seat(s), arbour, parasol, 4 sun recliner(s), outside shower facilities



bathroom

### Services

- **washing :**

Sheets (1 X / per week), Towels (1 X / per week), Linen (1 X / per week), Comforter(s), Comforter(s), Pillows

- **Single family home :**

Serviced, Cleaning on departure, Yard/swimming pool maintenance, Parking

### For your guidance

- **For your guidance**

Kids welcome

Pets accepted under certain conditions (ask the owner)

Cell phone network coverage

Water : hot/cold

Local voltage supply : 220-240V / 50Hz

Electricity supply : individual generator

- **Handicapped people welcome**

Wheelchair access



bedroom

Photo album - 1



pool view



General



view from the swimming pool



façade



bedroom

Photo album - 2



bathroom



bedroom



Fireplace



suite



bathroom



veranda



Kitchen Area



BBQ



Kitchen Area



veranda



Swimming pool



covered terrace

Photo album - 3



private courtyard



Winter



view from the garden/park



panorama



view from the living room



view from the sitting-room



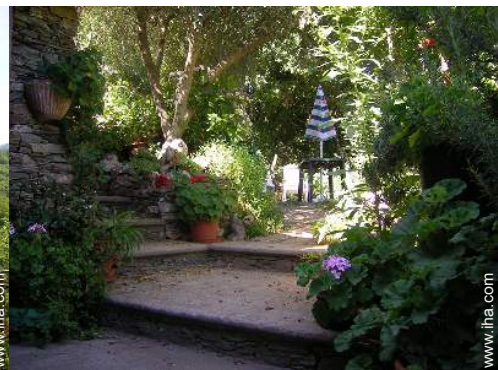
view from the garden/park



view from the living room



southerly view



View

Location & Access



GPS coordinates in degrees, minutes, seconds: Latitude 39° 57'12.744"N - Longitude 9°11'51.576"E ([City](#))

Address

→ v.le Kennedy  
08031 Aritzo

- Nuoro : Distance : 43,5mi.
- Cagliari : Distance : 68,5mi.
- Oristano : Distance : 40mi.

Contact

Last Name	Miss ONANO Maria Grazia CHALET SU FOXILE
Address	Loc. Gidilau
City	08031 ARITZO
Country	Italy
Phone #	+39 0784 629251 (Italy)
Cell phone #	+39 338 1405558 (Italy)
Fax #	+39 0784 629251 (Italy)

Spoken languages



Luxury vacation rental  
Barbagia - Italy  
"Su foxile"

8

[Book now](#)

Availability calendar - from : may 2012

May	Tu	W	Th	F	Sa	Su	M	Tu	W	Th	F	Sa	Su	M	Tu	W	Th	F	Sa	Su	M	Tu	W	Th							
2012	1	2	3	4	5	6	7	8	9	10	11	12	13	14	15	16	17	18	19	20	21	22	23	24	25	26	27	28	29	30	31
																									-	-	-	-	-	-	-

June	F	Sa	Su	M	Tu	W	Th	F	Sa	Su	M	Tu	W	Th	F	Sa	Su	M	Tu	W	Th	F	Sa							
2012	1	2	3	4	5	6	7	8	9	10	11	12	13	14	15	16	17	18	19	20	21	22	23	24	25	26	27	28	29	30
	-	-	-	-	-	-	-	-	-	-	-	-	-	-	-	-	-	-	-	-	-	-	-	-	-	-	-	-	-	-

Jul	Su	M	Tu	W	Th	F	Sa	Su	M	Tu	W	Th	F	Sa	Su	M	Tu	W	Th	F	Sa	Su	M	Tu							
2012	1	2	3	4	5	6	7	8	9	10	11	12	13	14	15	16	17	18	19	20	21	22	23	24	25	26	27	28	29	30	31
	-	-	-	-	-	-	-	-	-	-	-	-	-	-	-	-	-	-	-	-	-	-	-	-	-	-	-	-	-	-	

[Month : Next >>](#)

Rental rates - Luxury Mountain Chalet - 6 Person(s)

Rates	Night	Weekend	week	2 weeks	Month
 Low season	\$38 *	\$76 *	\$378 *	\$705 *	-
 Mid season	\$38 *	\$76 *	\$503 *	\$944 *	-
 High season	\$44 *	\$88 *	\$818 *	-	-
 Festive specials	\$44 * > 2	\$88 *	-	-	-

> Minimum Night

[Book now](#)

Advert No. 3322

www.iha.com



Internet  
Holiday  
Ads



Internet  
Holiday  
Ads





view from the swimming pool



façade



bedroom



pool view



General

### Booking conditions

● **Reservation**

→ Payment made at time of reservation :  
30% of rental sum

● **Rental**

- Service charges included
- Day tax included
- Cleaning charge on departure included
- Anticipated supplement for :
  - baby
  - supplementary bed(s)
  - firewood

[▶ Book now](#)

[▶ Contact the owner](#)

### Accepted methods of payment

- International Money Order
- Bank transfer (wire)
- PayPal
- Cash

Contact directly the property owners

[www.iha.com](http://www.iha.com)

Advert No.

3322

>> [Book now](#) <<

### Contact

Last Name	Miss ONANO Maria Grazia CHALET SU FOXILE
Address	Loc. Gidilau
City	08031 ARITZO
Country	Italy
Phone #	+39 0784 629251 (Italy)
Cell phone #	+39 338 1405558 (Italy)
Fax #	+39 0784 629251 (Italy)

Spoken languages



\* Converted at the rate indicated : €100 = \$125.87 = £80.11

Advert No. 3322

[www.iha.com](http://www.iha.com)



Internet  
Holiday  
Ads



Internet  
Holiday  
Ads

