

Bed and Breakfast South Downs "Holly Grove B&B"



Luxury Colonial House, detached,
2 floors in(on) a(an) Hamlet

Setting : peaceful, luxuriant

Guest Room(s) : 3

Receive up to guest(s) : 6
guests

- Suite "The Nutcracker Suite"
4 person(s)
- Room "The Stable"
2 person(s)
- Room "The New Room"
2 person(s)

Heathfield - East Sussex - South East

England

Reservation : +44 (0) 1435 863375 (United Kingdom)

Advert No. 34969

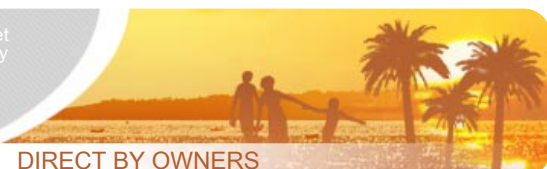
www.iha.com



Internet
Holiday
Ads



Internet
Holiday
Ads



Bed and Breakfast



Luxury Colonial House, detached, 2 floors in(on) a(an) Hamlet

- **Ideal for couples, family**
- **View :** not overlooked, country side, swimming pool, garden/park, prairie, forest
- **Setting :** peaceful, luxuriant
- **Exposure :** South

Goodies

- **Swimming pool :**
Private swimming pool, oval (length 30', width 15'), heated, steps in (open from 'may 01' till 'october 01')
- **Parking :**
Parking uncovered : 6 off road
- **Advantages :**
1 bike(s)
- **baby equipment :**
High chair

Benefits :
Stable(s)



south-westerly view

Surroundings & location



Leisure

- **Leisure activities less than 12 miles :**
Bathing, tennis, riding school, pathway/ broadwalk, coastal/forest paths, skate board (ramps)
- **Supervised :**
Riding school
- **Attractions and relaxation :**
Bar/pub, restaurant, park and garden, leisure park, zoo/animal park, sea world, exhibition center, historical site, theater, opera house, antiques & bric-a-brac, local craftstore

Surroundings

- **Locality :**
 - Heated swimming pool <165'
 - Shingle beach 15.5mi.
 - Nudist beach 31mi.
 - 9 hole golf course 4.5mi.
 - Flying clubs 31mi.
 - Cliff >31mi.
 - Stretch of water 330'
 - Lake 165'
 - Forest 165'
 - Marina 31mi.
- **Amenities :**
 - Bike/mountain bike hire
 - Breadstore
 - Local stores
 - Supermarket
 - Hairdressing salon
 - Mail office
 - Bank
 - ATM
 - Drugstore
 - Doctor
 - Dispensary



south-easterly view



private swimming pool



Resident animals

Interior

- **Receive up to guest(s) :**
6 guests, 3 Guest Room(s)
- **Interior layout at guests disposal :**
Sitting room, dining room, tv den, reception hall
- **Interior comforts at guests disposal :**
Fireplace, T.V., crockery/flatware, DVD player, board games, book collection, movie collection, cable/satellite, internet access, wifi (wireless internet access), radio alarmclock, hair dryer, washing machine, clothes dryer, iron, central heating



Resident animals

Exterior

- **Size of grounds :**
2.5 acres
- **Exterior facilities at guests disposal :**
Terrace, sundeck
- **Outside at the guests disposal :**
Enclosed grounds, yard, lawn, woodsy, natural pools, creek
- **Exterior amenities at guests disposal :**
Summer living area, BBQ, yard table(s), yard seat(s), parasol, yard seated area, sun recliner(s), sun lounger

Services

- **Restauration :**
Breakfast
- **washing :**
Sheets, Towels, Linen, Beach towels, Comforter(s), Comforter(s), Pillows
- **Single family home :**
Serviced, Cleaning on departure, Yard/swimming pool maintenance, Parking

For your guidance

- **For your guidance**
No kids under 12 years old
Pets accepted under certain conditions (ask the owner)
Present on site : pets, equine animals, wild animals
Cell phone network coverage, personal transport advisable
Water : hot/cold
Local voltage supply : 220-240V / 50Hz
Electricity supply : mains
- **Handicapped people welcome**
Wheelchair access



Resident animals

Suite "The Nutcracker Suite"



4 person(s) : 4 adults



•Interior layout and facilities :

Sleeping den, bathroom, washroom

•Sleeps - bed(s) :

1 queen-size bed(s), 2 twin bed(s)

•View

Garden/park, courtyard

•Exposure

South

•Facilities exclusive to

Private swimming pool, ping-pong table

•Guest facilities and furnishings :

Fireplace, T.V., DVD player, board games, book collection, internet access, wardrobe, cupboard, Hanging wardrobe, radio alarmclock, hair dryer, heated towel rail, power shower, iron, ironing board, central heating

•Exterior private facilities :

Terrace, sundeck, BBQ, yard table(s), yard seat(s), parasol, sun recliner(s), sun lounger



bedroom



bathroom



view from the bedroom



interior

Room "The Stable"



2 person(s)



•Interior layout and facilities :

Sleeping den, bathroom, washroom

•Sleeps - bed(s) :

2 twin bed(s)

•View

Garden/park

•Facilities exclusive to

Private swimming pool, ping-pong table

•Guest facilities and furnishings :

Fireplace, T.V., electric coffee maker, DVD player, electric kettle, board games, book collection, internet access, wardrobe, Hanging wardrobe, hair

dryer, clothes dryer, iron, ironing board, central heating, wood-burning stove

•Exterior private facilities :

Terrace, sundeck, sun recliner(s), sun lounger



Leisure facilities



private swimming pool

Room "The New Room"



2 person(s)



•Interior layout and facilities :

Sleeping den, shower room, washroom, sitting room, tv den

•Sleeps - bed(s) :

1 full bed(s)

•View

Not overlooked, swimming pool, courtyard

•Facilities exclusive to

Private swimming pool, ping-pong table

•Guest facilities and furnishings :

Fireplace, T.V., electric coffee maker, DVD player, electric kettle, board games, book collection, movie

collection, internet access, wardrobe, cupboard, Hanging wardrobe, radio alarmclock, hair dryer, heated towel rail, power shower, washing machine, iron, ironing board, central heating, wood-burning stove

•Exterior private facilities :

Terrace, sundeck, BBQ, yard table(s), yard seat (s), parasol, sun recliner(s), sun lounger



shower room



outside

Photo album - 1



private swimming pool



south-easterly view



south-westerly view



Resident animals



Resident animals

Photo album - 2



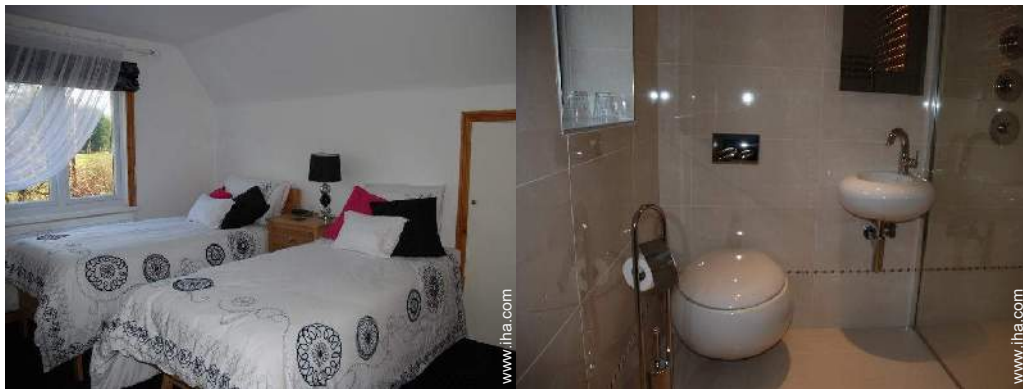
Resident animals

Interior layout



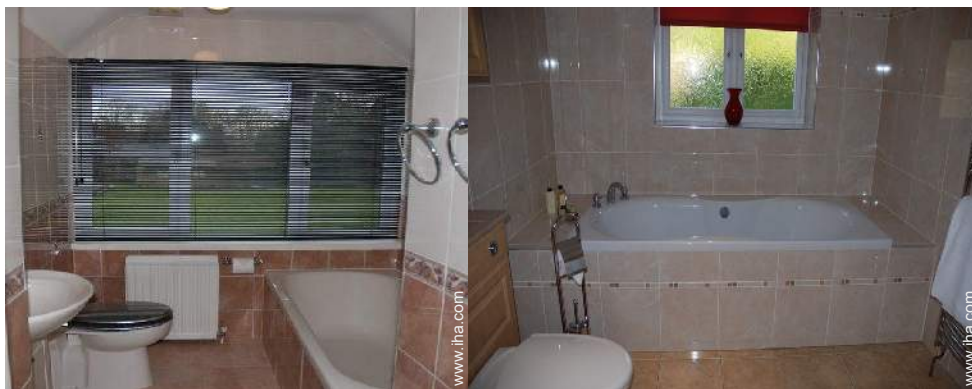
Interior layout

bedroom



bedroom

Interior layout



Interior layout

interior

Bed and Breakfast
South Downs - England
"Holly Grove B&B"

8

[Book now](#)

Location & Access



GPS coordinates in degrees, minutes, seconds: Latitude 50° 58'19.74"N - Longitude 0°15'7.488"E ([City](#))

Address

→ Holly Grove Little London
TN21 Heathfield

• [Airport London Gatwick](#)

→ London, London, England
→ Distance : 31mi.
→ Time : 1h

• [Sea port Dover](#)

→ Dover, Kent, South East, England
→ Distance : 62mi.
→ Time : 1h30'

• [Railroad station Ashford International](#)

→ Ashford, Kent, South East, England
→ Distance : 40mi.
→ Time : 1h

• Eastbourne : Distance : 16mi.

• Waldron : Distance : 2.5mi.

• Royal Tunbridge Wells : Distance : 15mi.

Contact

Last Name	Mr. Mrs. CHRISTIE JO HOLLY GROVE B&B
Address	Holly Grove Little London
City	TN21 0NU HEATHFIELD
Country	United Kingdom
Phone #	+44 (0) 1435 863375 (United Kingdom) From 08:00 AM to 09:30 PM (GMT/UTC)
Cell phone #	+44 (0) 7811 963193 (United Kingdom)
Spoken languages	

Advert No. 34969

www.ihacom.com



>> VACATION RENTALS

Internet
Holiday
Ads



Internet
Holiday
Ads















DIRECT BY OWNERS




**Bed and Breakfast
East Sussex - South East
"Holly Grove B&B"**

9

[Book now](#)

Rental rates "Holly Grove B&B"

Bed and Breakfast Rates		Night	Weekend	week	2 weeks	Month
1 Suite "The Nutcracker Suite" 4 person(s) (4 adults) 		\$141 * > 2 ↓	\$283 *	\$786 *	\$1257 *	\$2357 *
		\$141 * > 2	\$283 *	\$786 *	\$1257 *	\$2357 *
		\$141 * > 2	\$283 *	\$786 *	\$1257 *	\$2357 *
2 Room "The New Room" 2 person(s) 		\$110 * > 2	\$220 *	\$628 *	\$943 *	\$1571 *
		\$110 * > 2	\$220 *	\$628 *	\$943 *	\$1571 *
		\$110 * > 2	\$220 *	\$628 *	\$943 *	\$1571 *
3 Room "The Stable" 2 person(s) 		\$79 * > 2	\$157 *	\$471 *	\$628 *	\$943 *
		\$79 * > 2	\$157 *	\$471 *	\$786 *	\$943 *
		\$79 *	\$157 *	\$471 *	\$786 *	\$1100 *

 Low season
  Mid season
  High season

↓ Reducing rates > Minimum Night

[Book now](#)

Booking conditions

- **Reservation**
→ Payment balance :
on return of keys
→ Deposit required : \$31 *

Accepted methods of payment

- Bank transfer (wire) • Check • Cash


[▶ Book now](#)

[▶ Contact the owner](#)

Contact directly the property owners

www.iha.com
Advert No.
34969
>> Book now <<

Contact

Last Name Mr. Mrs. CHRISTIE JO HOLLY GROVE B&B
 Address Holly Grove Little London
 City TN21 0NU HEATHFIELD
 Country United Kingdom
 Phone # +44 (0) 1435 863375 (United Kingdom) From 08:00 AM to 09:30 PM (GMT/UTC)
 Cell phone # +44 (0) 7811 963193 (United Kingdom)
 Spoken languages 

* Converted at the rate indicated : €100 = \$125.87 = £80.11

Advert No. 34969

www.iha.com

