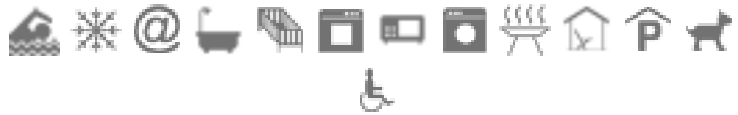
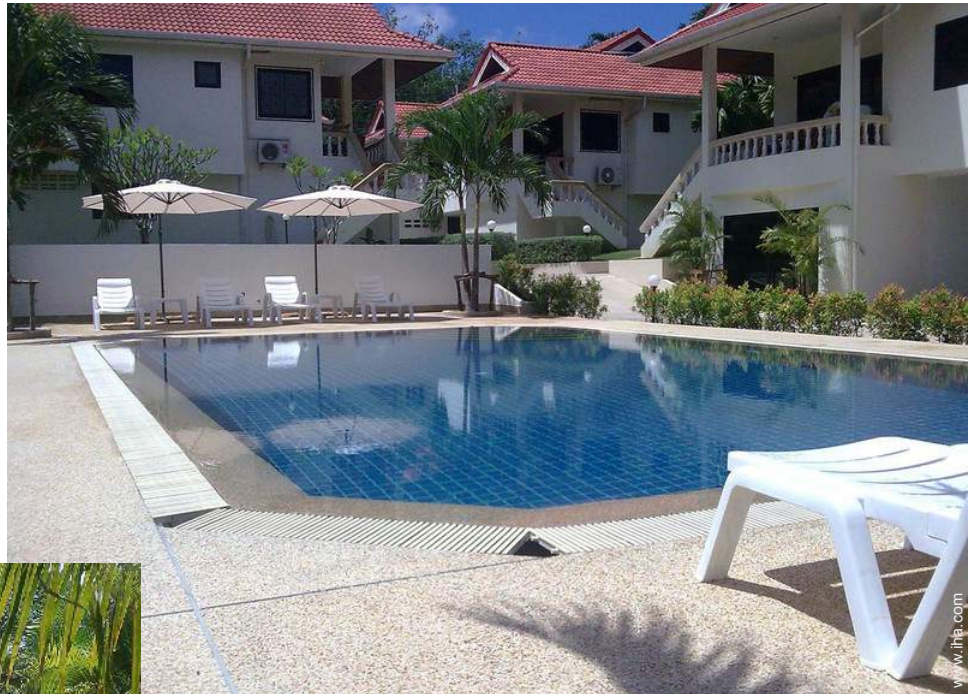


Vacation rental Nai Harn "Phuket Riviera Villas"



Apartment-Flat 2nd floor, seperate entrance, in(on) a(an) Luxury Property

Setting : exotic, tropical

Capacity : 4 person(s)

Bedroom(s) : 2

Room(s) : 4

Nai Harn - Phuket Province - South

Thailand

Reservation : +66 (0) 76 286708 (Thailand)

Advert No. 69246

www.iha.com



Internet
Holiday
Ads



Internet
Holiday
Ads



Vacation rental



Apartment-Flat 2nd floor, separate entrance, in(on) a(an) Luxury Property

- **Ideal for all age groups, family**
- **View :** swimming pool, garden/park, forest, nightlights
- **Setting :** exotic, tropical
- **Exposure :** South

Goodies

- **Swimming pool :**

Shared swimming pool, rectangular (length 40', width 23'), cascading, sea water, illuminated, steps in, outside shower (open from 'january 01' till 'december 31')

- **Parking :**

Covered parking : 8 communal, 6 carport



view from the swimming pool

Surroundings & location



Ocean



Fishing



Culture

Leisure

- **Leisure activities less than 12 miles :**

Bathing, snorkelling, scuba diving, banana boat, jet ski, surfing, windsurfing, sailing, kite surfing, canoeing, coastal/forest paths, hiking, rock climbing, mountain bike (path), kite flying, paragliding, boat trips, horse trekking, mini-golf, ATV/Quad Bike, RC aeromodelling field, paintball, clay pidgeon shooting, deep-sea fishing, fishing, spear fishing

- **Supervised :**

Sailing school, dive school, riding school

- **Attractions and relaxation :**

Bar/pub, discotheque, karaoke, zoo/animal park, sea world, nature reserve, antiques & bric-a-brac, natural spring baths, sauna, steam baths, health spa, beauticians, fitness center

Surroundings

- **Locality :**

- Sea/ocean 0.62mi.
- Sandy beach 0.62mi.
- 18 hole golf course 6mi.
- Windsurfing spots 0.62mi.
- Surfing spots 0.62mi.
- Cliff 0.62mi.
- Lake 0.5mi.
- Forest 660'
- Marina 1.85mi.

- **Amenities :**

- Village center 330'
- Downtown 2.5mi.
- Bus stop / bus station 330'
- Scooter/motorbike hire <165'
- Car rental 660'
- Boat rental 2.5mi.
- Scuba diving material hire 0.93mi.
- Breadstore 990'
- Local stores 990'
- Supermarket 330'
- Hairdressing salon 165'
- Bank 990'
- Drugstore 0.3mi.
- Hospital 6mi.
- Dispensary 0.62mi.



view from the garden/park



view from the garden/park



Sea water swimming pool

Exterior

- **Size of grounds :**
0.75 acre
- **Outside accommodation :**
Covered terrace 85 Sq.ft.
- **Outside setting :**
Private courtyard 0.25 acre., tropical garden 5,400 Sq.ft.
- **Outside amenities :**
BBQ, yard table(s), yard seat(s), parasol, 15 sun recliner(s), outside shower facilities



sun recliner(s)

Interior

- **Receive up to guest(s) :**
4 person(s) - 4 adults
- **Liveable floor area :**
1,076 Sq.ft.
- **Interior layout :**
4 Room(s), 2 bedroom(s), 2 bathroom, living room 215 Sq.ft., kitchenette, dining room, cosy nook, tv den, patio
- **Sleeps - bed(s) :**
2 queen-size bed(s), 1 baby cradle
- **Guest facilities :**
T.V., hi-fi system, DVD player, book collection, movie collection, computer, high speed internet access, wifi (wireless internet access), wardrobe, Hanging wardrobe, safe deposit box, fly screens, fully air-conditioned, ceiling paddle fan, Drapes
- **Appliances :**
Crockery/flatware, kitchen utensils, cafetiere, electric coffee maker, electric kettle, toaster, gaz stove, mini-oven, micro-wave oven, refridgerator, deep freeze, washing machine

Services

- **washing :**
Sheets (7 X / per week), Towels (7 X / per week), Linen (7 X / per week), Beach towels (7 X / per week), Pillows (1 X / per week)
- **Single family home :**
Serviced (7 X / per week), Yard/swimming pool maintenance (2 X / per week), Parking, Airport transfers supplement (+\$38 *)

For your guidance

- **For your guidance**
Kids welcome
Pets friendly
Cell phone network coverage, personal transport advisable
Water : hot/cold
Local voltage supply : 220-240V / 50Hz
Electricity supply : mains
- **Handicapped people welcome**
Wheelchair access



parasol

Floor plan

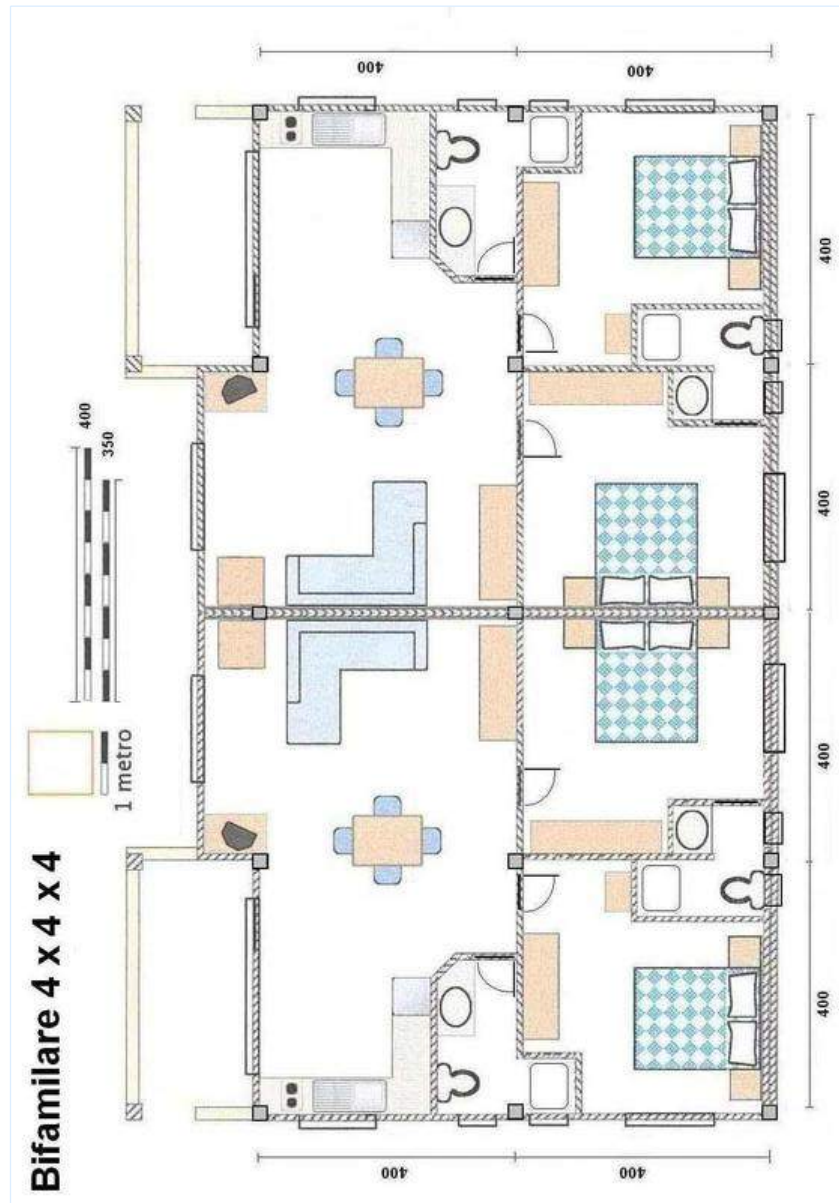


Photo album - 1



view from the garden/park



view from the garden/park



view from the swimming pool



Sea water swimming pool



parasol

Photo album - 2



sun recliner(s)



View



View from the property



View from the property



master bedroom



guest bedroom



living room



tv den



kitchenette



bathroom

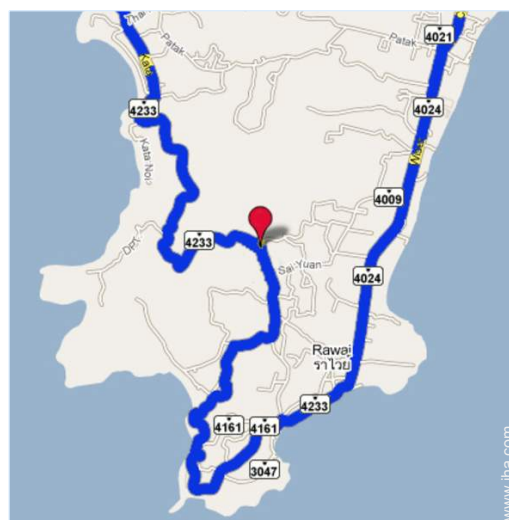
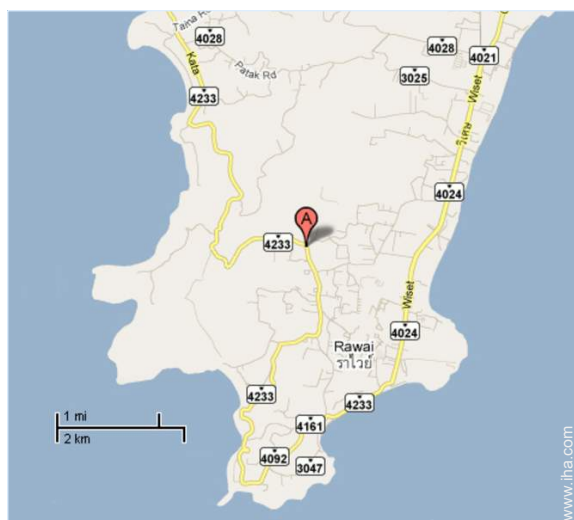


covered terrace



Parking

Route map



Location & Access



GPS coordinates in degrees, minutes, seconds: Latitude 7° 47'41.8"N - Longitude 98°18'54.72"E (Dwelling)

Address

→ 95/23 Saiyuan Rd.
Nai Harn
83130 Nai Harn

• Airport Phuket

→ Phuket City, Phuket Province, South, Thailand
→ Distance : 22,5mi.
→ Time : 1h

• Sea port Phuket Rassada Port

→ Phuket City, Phuket Province, South, Thailand
→ Distance : 9mi.
→ Time : 20'

- Rawai : Distance : 0.62mi.
- Kata Beach : Distance : 2.5mi.
- Chalong : Distance : 2.5mi.

Contact

Last Name	Mr. NASTRI Giorgio
Address	95/23 Saiyuan Rd. NAI HARN
City	83130 PHUKET
Country	Thailand
Phone #	+66 (0) 76 286708 (Thailand)
Cell phone #	+66 (0) 81 3913681 (Thailand)
Fax #	+66 (0) 76 381431 (Thailand)

Spoken languages  

Availability calendar - from : may 2012

May	Tu	W	Th	F	Sa	Su	M	Tu	W	Th	F	Sa	Su	M	Tu	W	Th	F	Sa	Su	M	Tu	W	Th	F	Sa	Su	M	Tu	W	Th	
2012	1	2	3	4	5	6	7	8	9	10	11	12	13	14	15	16	17	18	19	20	21	22	23	24	25	26	27	28	29	30	31	

June	F	Sa	Su	M	Tu	W	Th	F	Sa	Su	M	Tu	W	Th	F	Sa	Su	M	Tu	W	Th	F	Sa							
2012	1	2	3	4	5	6	7	8	9	10	11	12	13	14	15	16	17	18	19	20	21	22	23	24	25	26	27	28	29	30
	-	-	-	-	-	-	-	-	-	-	-	-	-	-	-	-	-	-	-	-	-	-	-	-	-	-	-	-	-	-

Jul	Su	M	Tu	W	Th	F	Sa	Su	M	Tu	W	Th	F	Sa	Su	M	Tu	W	Th	F	Sa	Su	M	Tu							
2012	1	2	3	4	5	6	7	8	9	10	11	12	13	14	15	16	17	18	19	20	21	22	23	24	25	26	27	28	29	30	31
	-	-	-	-	-	-	-	-	-	-	-	-	-	-	-	-	-	-	-	-	-	-	-	-	-	-	-	-	-	-	

[Month : Next >>](#)

Rental rates - Apartment-Flat - 4 Person(s)

Rates	Night	Weekend	week	2 weeks	Month
■ Low season	\$50 *	-	-	-	\$1133 *
■ High season	\$101 *	-	-	-	\$2266 *

[Book now](#)

Booking conditions

- **Reservation**
→ Payment made at time of reservation : 50% of rental sum
- **Rental**
→ Service charges included
→ Day tax included
→ Cleaning charge on departure included

Accepted methods of payment

- Bank transfer (wire) • Cash

[▶ Book now](#)

[▶ Contact the owner](#)

Contact directly the property owners

www.ihacom.com
Advert No.
69246
[>> Book now <<](#)

Contact

Last Name Mr. NASTRI Giorgio
Address 95/23 Saiyuan Rd.
NAI HARN
City 83130 PHUKET
Country Thailand
Phone # +66 (0) 76 286708
(Thailand)
Cell phone # +66 (0) 81 3913681
(Thailand)
Fax # +66 (0) 76 381431
(Thailand)

Spoken languages



* Converted at the rate indicated : €100 = \$125.87 = £80.11

Advert No. 69246

www.ihacom.com



Internet
Holiday
Ads



Internet
Holiday
Ads

