

Luxury vacation rental Region Zell am See - Kaprun "Cityapartment Schmittenstrasse"



Luxury Apartment - Flat 2nd floor,
shared entrance, in(on) a(an) Private
estate 1 floor

Setting : ski to door, quiet

Capacity : 6 person(s)

Bedroom(s) : 2

Room(s) : 3

Zell am See - State of Salzburg

Austria

Reservation : +43 (0) 6803111105 (Austria)

Advert No. 50427

www.iha.com



Internet
Holiday
Ads



Internet
Holiday
Ads



Luxury vacation rental



Luxury Apartment - Flat 2nd floor, shared entrance, in(on) a(an) Private estate 1 floor

- **Ideal for all age groups, family**
- **View :** unobscured, not overlooked, mountain, garden/park, prairie, forest
- **Setting :** ski to door, quiet
- **Exposure :** South

Goodies

- **Parking :**
Parking uncovered : 1 off road
- **Advantages :**
Ski locker
- **baby equipment :**
High chair

Benefits :
Private airfield/landing strip



large bedroom

Surroundings & location



Leisure

- **Leisure activities less than 12 miles :**

Alpine skiing, cross-country skiing, ski-trekking, snowboarding, luge (run), ice-skating, bathing, pedalo, banana boat, water skiing, windsurfing, sailing, canoeing, canyoning, golf, tennis, squash, riding school, pathway/broadwalk, coastal/forest paths, hiking, rappel, rock climbing, mountain bike (path), boat trips, horse-drawn carriage, horse trekking, mini-golf, volleyball, fishing

- **Supervised :**

Ski school, kids ski area, sailing school, riding school

- **Attractions and relaxation :**

Bar/pub, discotheque, restaurant, park and garden, zoo/animal park, sea world, exhibition center, antiques & bric-a-brac, local craftstore, sauna, fitness center

Surroundings

- **Locality :**

- Ski slopes <165'
- Ski lifts <165'
- Ice skating rink 0.5mi.
- Heated swimming pool 0.5mi.
- Public swimming pool 0.5mi.
- Public tennis court 1.25mi.
- 18 hole golf course 2.5mi.
- Flying clubs 2.5mi.
- Windsurfing spots 0.5mi.
- Watersports centre 0.5mi.
- Lake 0.5mi.
- Forest 330'
- Mountain range 0.62mi.

- **Amenities :**

- Downtown 660'
- Bus stop / bus station <165'
- Ski bus pick up point <165'
- Bike/mountain bike hire
- Car rental
- Boat rental 0.5mi.
- Ski hire store <165'
- Household linens for hire/laundry services
- Breadstore 660'
- Caterer 990'
- Local stores 660'
- Supermarket 660'
- High class retailers 990'
- Mail office 660'
- Bank 990'
- ATM 990'
- Drugstore 990'

- Doctor 990'
- Hospital



living room



dining area



Kid's room

Exterior

- **Outside accommodation :**
Covered terrace 120 Sq.ft.
- **Outside setting :**
Enclosed grounds, yard, lawn
- **Outside amenities :**
2 yard seat(s)



power shower

Interior

- **Receive up to guest(s) :**
6 person(s)
- **Liveable floor area :**
700 Sq.ft.
- **Interior layout :**
3 Room(s), 2 bedroom(s), sleeping den, 1 bathroom, 1 washroom, living room 215 Sq. ft., seperate kitchen, dining area, pantry, patio, loggia
- **Sleeps - bed(s) :**
2 full bed(s), 1 sleeper sofa(s) 2 pers, 1 baby cradle
- **Guest facilities :**
Elevator, T.V., digital home cinema, hi-fi system, DVD player, movie collection, t.v points, cable/satelite, wardrobe, cupboard, Hanging wardrobe, radio alarmclock, hair dryer, power shower, central heating, Drapes, Double glazed, entry phone system
- **Appliances :**
Crockery/flatware, kitchen utensils, electric coffee maker, electric kettle, toaster, electric stove, electric hobs, oven, micro-wave oven, extractor hood, refridgerator, dish washer, washing machine, clothes dryer, vacuum cleaner, iron, ironing board

Services

- **washing :**
Sheets, Towels, Linen, Comforter(s), Comforter(s), Pillows
- **Single family home :**
Cleaning on departure supplement (+\$82 *), Snow clearance, Parking

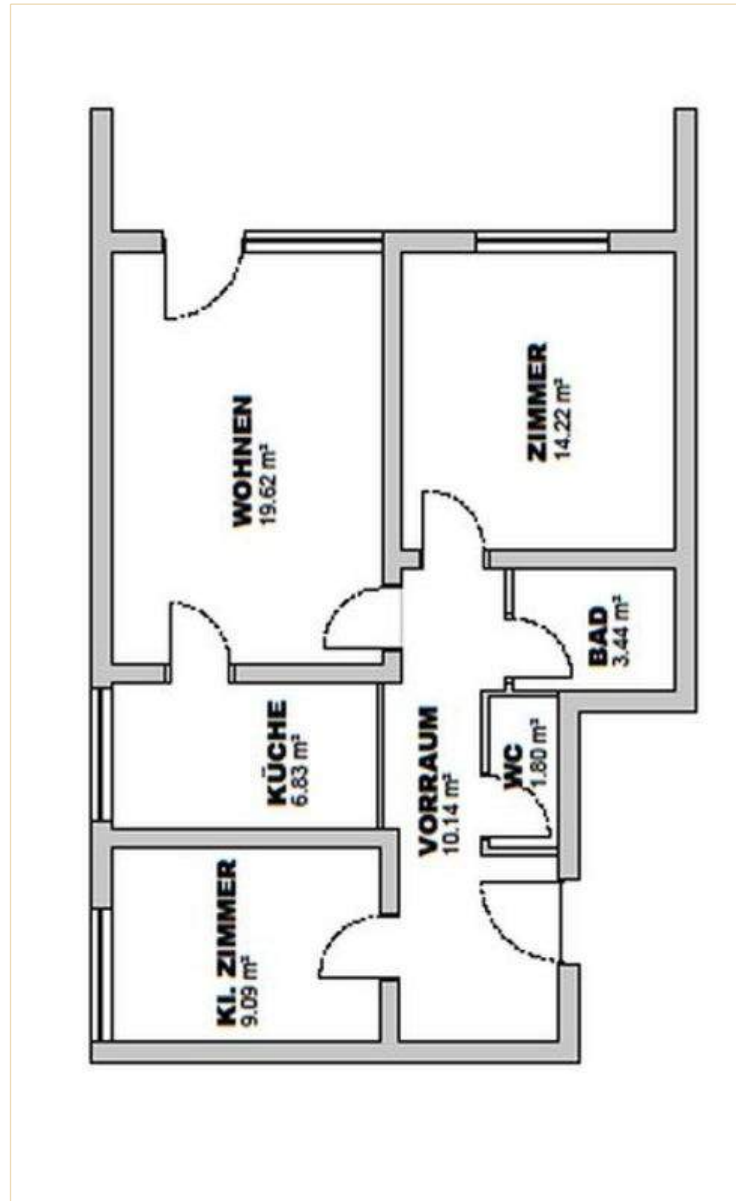
For your guidance

- **For your guidance**
Non smoking rental, cell phone network coverage
Water : hot/cold
Local voltage supply : 220-240V / 50Hz
Electricity supply : mains



Hanging wardrobe

Floor plan



www.ihha.com

Advert No. 50427

www.ihha.com



Internet
Holiday
Ads



Internet
Holiday
Ads



Photo album - 1



dining area



living room



large bedroom



Kid's room



Hanging wardrobe

Advert No. 50427

www.iha.com



Internet
Holiday
Ads



Internet
Holiday
Ads



Photo album - 2



power shower



bathroom



kitchen



Single family home



bathing



boat trips



pathway/broadwalk



Culture

Photo album - 3



restaurant



hiking



City



ski lifts



leisure pursuits nearby



ski slopes



Winter



Winter

Route map



Location & Access



GPS coordinates in degrees, minutes, seconds: Latitude 47° 19'26"N - Longitude 12°47'37"E ([Dwelling](#))

Address

→ Schmittenstraße 9
5700 Zell am See

• Freeway (exit) Salzburg Richtung Lofen

→ Salzburg, State of Salzburg, Austria
→ Time : 1h

• Railroad station Zell am See

→ Zell am See, State of Salzburg, Austria
→ Distance : 0.5mi.
→ Time : 10'

- Saalbach Hinterglemm : Distance : 11,8mi.
- Bad Gastein : Distance : 30mi.
- Kitzbühel : Distance : 30mi.

Contact

Last Name	Mrs. Mr. THON S CITYAPARTMENTS THON
Address	Klanggasse 7/3/5
City	1020 WIEN
Country	Austria
Cell phone #	+43 (0) 6803111105 (Austria)

Spoken languages  



Luxury vacation rental
Zell am See - Region Zell am See - Kaprun
"Cityapartment Schmittenstraße"

9

[Book now](#)

Availability calendar - from : may 2012

May	Tu	W	Th	F	Sa	Su	M	Tu	W	Th	F	Sa	Su	M	Tu	W	Th	F	Sa	Su	M	Tu	W	Th	F	Sa	Su	M	Tu	W	Th	
2012	1	2	3	4	5	6	7	8	9	10	11	12	13	14	15	16	17	18	19	20	21	22	23	24	25	26	27	28	29	30	31	

June	F	Sa	Su	M	Tu	W	Th	F	Sa	Su	M	Tu	W	Th	F	Sa	Su	M	Tu	W	Th	F	Sa							
2012	1	2	3	4	5	6	7	8	9	10	11	12	13	14	15	16	17	18	19	20	21	22	23	24	25	26	27	28	29	30
	-	-	-	-	-	-	-	-	-	-	-	-	-	-	-	-	-	-	-	-	-	-	-	-	-	-	-	-	-	-

Jul	Su	M	Tu	W	Th	F	Sa	Su	M	Tu	W	Th	F	Sa	Su	M	Tu	W	Th	F	Sa	Su	M	Tu							
2012	1	2	3	4	5	6	7	8	9	10	11	12	13	14	15	16	17	18	19	20	21	22	23	24	25	26	27	28	29	30	31
	-	-	-	-	-	-	-	-	-	-	-	-	-	-	-	-	-	-	-	-	-	-	-	-	-	-	-	-	-	-	

■ Low season
 ■ Reserved
 ■ Promotional period

[Month : Next >>](#)

Rental rates - Luxury Apartment - Flat - 6 Person(s)

Rates	Night	Weekend	week	2 weeks	Month
■ Low season	\$76 * > 3	-	-	-	-
■ Mid season	\$164 * > 3	-	-	-	-
■ High season	\$189 * (Saturday) > 7	-	-	-	-
■ Festive specials	\$113 * > 3	-	-	-	-
■ Promotional period	\$151 * (Saturday) > 7	-	-	-	-

(Check-in day) > Minimum Night

[Book now](#)

Advert No. 50427

www.iha.com



Internet
Holiday
Ads



Internet
Holiday
Ads





large bedroom



Kid's room



Hanging wardrobe



dining area



living room

Booking conditions

• Reservation

- Payment made at time of reservation : 30% of rental sum
- Payment balance : on return of keys
- Deposit required : \$378 *

• Rental

- Service charges included
- Day tax in addition
- Cleaning charge levy on departure : \$76 *

[▶ Book now](#)

[▶ Contact the owner](#)

Accepted methods of payment

- Visa/Delta/Electron • Bank transfer (wire) • MasterCard/EuroCard • PayPal • Cash

Contact directly the property owners

www.iha.com



Advert No.

50427

>> Book now <<

Contact

Last Name Mrs. Mr. THON S
 CITYAPARTMENTS
 THON
 Address Klanggasse 7/3/5
 City 1020 WIEN
 Country Austria
 Cell phone # +43 (0) 6803111105
 (Austria)

Spoken languages  

* Converted at the rate indicated : €100 = \$125.87 = £80.11

Advert No. 50427

www.iha.com



Internet
 Holiday
 Ads



Internet
 Holiday
 Ads

