

Vacation rental Kubutambahan "Blue Marlin"



Villa, detached, 2 floors, separate entrance, in(on) a(an) Luxury Property

Setting : foot-in-the water, tropical

Capacity : 12 person(s)

Bedroom(s) : 5

Room(s) : 8

Kubutambahan - Bali - Sunda Islands

Indonesia

Reservation : +62 (819) 36348083 (Indonesia)

Advert No. 1750

www.iha.com



Internet
Holiday
Ads



Internet
Holiday
Ads



Vacation rental



Villa, detached, 2 floors, separate entrance, in(on) a(an) Luxury Property

- **Ideal for all age groups, sporty types**
- **View :** panoramic, sea/ocean, mountain, swimming pool, village, fantastic sunset
- **Setting :** foot-in-the water, tropical

Goodies

- **Swimming pool :**
Private swimming pool, rectangular (length 33', width 20')
- **Parking :**
Covered parking : 2 carport
Parking uncovered
- **Advantages :**
Massage table, table football, 10 snorkelling equipment, 1 windsurf board(s)
- **baby equipment :**
High chair

Benefits :
Direct access to the beach



dominant view

Surroundings & location



Leisure

- **Leisure activities less than 12 miles :**
Bathing, snorkelling, scuba diving, jet ski, windsurfing, canoeing, rafting, tennis, pony club, boat trips, fishing
- **Supervised :**
Dive school
- **Attractions and relaxation :**
Bar/pub, discotheque, restaurant, karaoke

Surroundings

- **Locality :**
 - Sea/ocean <165'
 - Sandy beach <165'
 - Public swimming pool 0.5mi.
 - Public tennis court 0.5mi.
 - 9 hole golf course 31mi.
 - 18 hole golf course 31mi.
 - Windsurfing spots <165'
 - Watersports centre 12.5mi.
 - River rapids 25mi.
 - Waterfall 6mi.
 - Lake 31mi.
 - Forest
 - Mountain range 0.3mi.
 - Marina 0.93mi.
 - Jetski slipway <165'
- **Amenities :**
 - Village center 0.3mi.
 - Bike/mountain bike hire <165'
 - Scooter/motorbike hire <165'
 - Car rental <165'
 - Boat rental 0.5mi.
 - Scuba diving material hire <165'
 - Local stores 0.5mi.
 - Supermarket 3mi.
 - Internet cafe 3mi.
 - Mail office 9mi.
 - Bank 9mi.
 - ATM 2.5mi.
 - Drugstore 1.25mi.



overall view



the property



pool view

Exterior

- **Size of grounds :**
0.37 acre
- **Outside accommodation :**
Terrace 650 Sq.ft., covered terrace 215 Sq.ft., roof terrace 215 Sq.ft., balcony 430 Sq.ft., sundeck 215 Sq.ft., pergola 160 Sq.ft., gazebo
- **Outside setting :**
Private courtyard 2,150 Sq.ft., landscaped yard 5,400 Sq.ft., tropical garden 5,400 Sq.ft., lawn 2,150 Sq.ft., palm grove
- **Outside amenities :**
BBQ, 10 yard seat(s), trolley on wheels, parasol, child's swing



view from the swimming pool

Interior

- **Receive up to guest(s) :**
12 person(s) - 10 adults, 2 kids
- **Liveable floor area :**
6,500 Sq.ft.
- **Interior layout :**
8 Room(s), 5 bedroom(s), 4 bathroom, 5 washroom, living room 1,076 Sq.ft., sitting room 530 Sq.ft., american style kitchen, dining room, dining area, games room, laundry room, patio, veranda
- **Sleeps - bed(s) :**
4 king-size bed(s), 2 two twin beds, 1 baby cradle
- **Guest facilities :**
T.V., DVD player, video games, movie collection, computer, internet access, safe deposit box, fully air-conditioned, ceiling paddle fan
- **Appliances :**
Kitchen utensils, electric coffee maker, electric kettle, toaster, juicer, food processor, pancake maker, fondue set, electric stove, oven, electric fries fryer, extractor hood, refrigerator, deep freeze, washing machine, vacuum cleaner, iron, ironing board

Services

- **washing :**
Sheets, Towels, Linen, Beach towels, Comforter(s), Comforter(s), Pillows
- **Single family home :**
Serviced, Cleaning on departure, Yard/swimming pool maintenance, Caretaker/concierge, Parking, Airport transfers supplement (+\$57 *)
- **Personnel :**
Staff, Chef(s), Chauffeur supplement (+\$57 *), Laundry, Baby sitting, Beauty treatments supplement (+\$25 *), Massage supplement (+\$19 *), Guide supplement (+\$57 *), Entertainer supplement (+\$63 *)
- **Restauration :**
Breakfast supplement (+\$6 *), BBQ meal supplement (+\$19 *), Full board supplement (+\$19 *)

For your guidance

- **For your guidance**
Kids welcome
Cell phone network coverage
Water : hot/cold
Local voltage supply : 220V / 60Hz
Electricity supply : mains and back-up generator
- **Handicapped people welcome**
Wheelchair access



view of the sunset

Advert No. 1750

www.iha.com



>> VACATION RENTALS

Internet
Holiday
Ads



Internet
Holiday
Ads



DIRECT BY OWNERS

Photo album - 1



the property



overall view



dominant view



pool view



view of the sunset

Photo album - 2



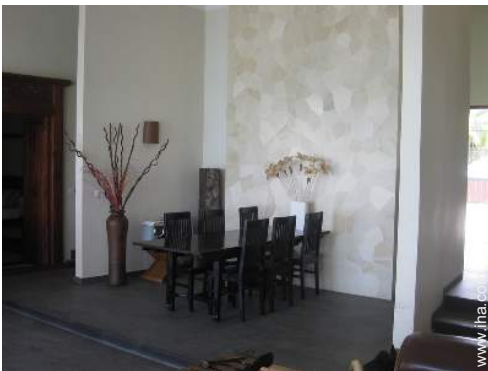
view from the swimming pool



view from the covered terrace



king-size bed(s)



dining area



windsurf board(s)



staff



scuba diving



scuba diving



scuba diving



scuba diving



scuba diving



scuba diving

Photo album - 3



jet ski



Swimming pool



Swimming pool



BBQ



gazebo



scooter/motorbike hire



Spa



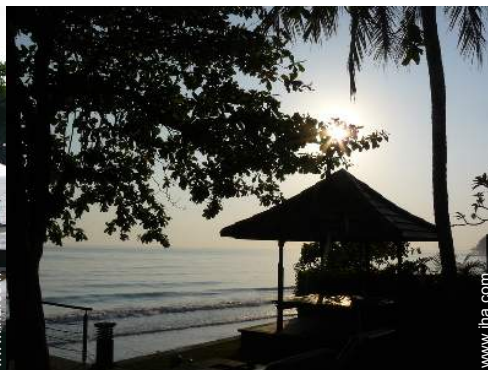
Kitchen Area



aerial view



landscaped yard



view of the sunset



rafting

Location & Access



GPS coordinates in degrees, minutes, seconds: Latitude 8° 5'1"S - Longitude 115°14'6"E ([Dwelling](#))

Address

→ Jln Air Sanih desa bukti

• [Airport Denpasar Ngurah Rai](#)

→ Denpasar, Bali, Sunda Islands, Indonesia

→ Distance : 56mi.

→ Time : 2h

• [Sea port Gilimanuk](#)

→ Gilimanuk, Bali, Sunda Islands, Indonesia

→ Time : 1h30'

• [Sea port Padangbai](#)

→ Padangbai, Bali, Sunda Islands, Indonesia

→ Distance : 53mi.

→ Time : 2h

• Singaraja : Distance : 7,5mi.

• Lovina Beach : Distance : 17,5mi.

• Denpasar : Distance : 56mi.

Contact

Last Name	Mr. BLI GEDE BLUE MARLIN
Address	Jln Air Sanih 14
City	0362 AIRSANIH / DESA BUKTI
Country	Indonesia
Cell phone #	+62 (819) 36348083 (Indonesia)

Spoken languages 



Vacation rental
Kubutambahan - Indonesia
"Blue Marlin"

9

[Book now](#)

Availability calendar - from : may 2012

May	Tu	W	Th	F	Sa	Su	M	Tu	W	Th	F	Sa	Su	M	Tu	W	Th	F	Sa	Su	M	Tu	W	Th	F	Sa	Su	M	Tu	W	Th	
2012	1	2	3	4	5	6	7	8	9	10	11	12	13	14	15	16	17	18	19	20	21	22	23	24	25	26	27	28	29	30	31	
																									-	-	-	-	-	-	-	-

June	F	Sa	Su	M	Tu	W	Th	F	Sa	Su	M	Tu	W	Th	F	Sa	Su	M	Tu	W	Th	F	Sa							
2012	1	2	3	4	5	6	7	8	9	10	11	12	13	14	15	16	17	18	19	20	21	22	23	24	25	26	27	28	29	30
	-	-	-	-	-	-	-	-	-	-	-	-	-	-	-	-	-	-	-	-	-	-	-	-	-	-	-	-	-	-

Jul	Su	M	Tu	W	Th	F	Sa	Su	M	Tu	W	Th	F	Sa	Su	M	Tu	W	Th	F	Sa	Su	M	Tu							
2012	1	2	3	4	5	6	7	8	9	10	11	12	13	14	15	16	17	18	19	20	21	22	23	24	25	26	27	28	29	30	31
	-	-	-	-	-	-	-	-	-	-	-	-	-	-	-	-	-	-	-	-	-	-	-	-	-	-	-	-	-	-	

Mid season
 Reserved
 High season

[Month : Next >>](#)

Rental rates - Villa - 12 Person(s)

Rates	Night	Weekend	week	2 weeks	Month
 Low season	\$138 * > 3	-	\$969 *	-	\$3147 *
 Mid season	\$145 * > 3	-	\$1013 *	-	\$3776 *
 High season	\$151 * > 5	-	\$1057 *	-	-
 Promotional period	\$123 * > 5	-	\$863 *	-	\$2958 *

> Minimum Night

[Book now](#)

Advert No. 1750

www.iha.com



Internet
Holiday
Ads



Internet
Holiday
Ads





dominant view



pool view



view of the sunset



the property



overall view

Booking conditions

- **Reservation**

→ Payment made at time of reservation :
50% of rental sum
→ Payment balance :
3 weeks before the stay

- **Rental**

→ Service charges included
→ Day tax included
→ Cleaning charge on departure included
→ Anticipated supplement for :
- firewood

[▶ Book now](#)

[▶ Contact the owner](#)

Accepted methods of payment

- Bank transfer (wire)

Contact directly the property owners

www.iha.com

Advert No.

1750

>> [Book now](#) <<

Contact

Last Name	Mr. BLI GEDE BLUE MARLIN
Address	Jln Air Sanih 14
City	0362 AIRSANIH / DESA BUKTI
Country	Indonesia
Cell phone #	+62 (819) 36348083 (Indonesia)

Spoken
languages



* Converted at the rate indicated : €100 = \$125.87 = £80.11

Advert No. 1750

www.iha.com



Internet
Holiday
Ads



Internet
Holiday
Ads

