

# Charming vacation rental Ribera Baixa "Casa Rural Sansofi"



**Charming Country House**, detached, single storey, separate entrance, in (on) a(an) Farm setting

Setting : pleasant, rustic

Capacity : **6 person(s)**

Bedroom(s) : **3**

Llaurí - Valencia Province - Valencian Country

Spain

Advert No. 44559

[www.iha.com](http://www.iha.com)



>> VACATION RENTALS

Internet  
Holiday  
Ads



Internet  
Holiday  
Ads



DIRECT BY OWNERS

### Charming vacation rental



Charming Country House, detached, single storey, separate entrance, in(on) a(an) Farm setting

- **Ideal for all age groups**
- **View :** mountain, swimming pool, garden/park, farmland, prairie, forest
- **Setting :** pleasant, rustic

### Goodies

- **Swimming pool :**  
Private swimming pool, rectangular (length 26', width 13'), cascading, steps in, step ladder
- **Parking :**  
Covered parking : 2 individual stall locked



sundeck

### Surroundings & location



Countryside



Fishing

#### Leisure

- **Leisure activities less than 12 miles :**

Bathing, scuba diving, windsurfing, sailing, canoeing, golf, tennis, squash, pathway/broadwalk, coastal/forest paths, go-karting, ten-pin bowling, basketball, paintball, hunting, big game hunting, fishing, fishing, pétanque field

- **Attractions and relaxation :**

Bar/pub, discotheque, restaurant, movie theater, open air summer movie theater, karaoke, park and garden, leisure park, zoo/animal park, sea world, nature reserve, historical site, theater, fitness center

#### Surroundings

- **Locality :**

- Sea/ocean 4.5mi.
- Sandy beach 4.5mi.
- Rocky beach 6mi.
- Nudist beach 6mi.
- Public swimming pool 1.25mi.
- 9 hole golf course 15.5mi.
- River 4.5mi.
- Lake 12.5mi.
- Mountain range 0.93mi.

- **Amenities :**

- Village center 0.93mi.
- Bus stop / bus station 1.25mi.
- Bus pick up point beach 1.25mi.
- Breadstore 1.25mi.
- Local stores 1.25mi.
- Supermarket 1.25mi.
- Hairdressing salon 1.25mi.
- Mail office 1.25mi.
- Bank 1.25mi.
- ATM 1.25mi.
- Drugstore 1.25mi.
- Doctor 1.25mi.
- Hospital 4.5mi.
- Dispensary 1.25mi.



private swimming pool



private swimming pool

Charming vacation rental  
Llaurí - Spain  
"Casa Rural Sansofi"

3

[Book now](#)



Farm setting

Exterior

- **Size of grounds :**  
> 25 acres
- **Outside accommodation :**  
Terrace 860 Sq.ft., covered terrace 215 Sq.ft., roof terrace 430 Sq.ft., sundeck, gazebo
- **Outside setting :**  
Enclosed grounds > 25 acres, yard 530 Sq.ft., orchard > 25 acres
- **Outside amenities :**  
BBQ, yard table(s), yard seat(s), trolley on wheels, parasol, yard seated area, chaise(s) longue(s), outside shower facilities



view from the terrace

Interior

- **Receive up to guest(s) :**  
6 person(s)
- **Liveable floor area :**  
1,940 Sq.ft.
- **Interior layout :**  
3 bedroom(s), 1 bathroom, living room 172 Sq.ft., sitting room 323 Sq.ft., separate kitchen, dining room, dining area, cosy nook, tv den, reading room, games room, walk-in closet, laundry room, pantry, patio
- **Sleeps - bed(s) :**  
1 full bed(s), 4 twin bed(s)
- **Guest facilities :**  
Fireplace, T.V., DVD player, board games, book collection, movie collection, t.v points, cable/satellite, wardrobe, cupboard, Hanging wardrobe, hair dryer, fly screens, partly air-conditioned, electric heating, Glazed in area, Drapes, Blinds, Rolling shutters, intruder alarm, remote controlled gates
- **Appliances :**  
Crockery/flatware, kitchen utensils, electric espresso coffee maker, toaster, juicer, food processor, meat broiler, electric stove, electric hobs, oven, micro-wave oven, electric fries fryer, extractor hood, refrigerator, deep freeze, washing machine, vacuum cleaner, iron, ironing board

Services

- **washing :**  
Sheets, Towels, Linen, Comforter(s), Comforter(s), Pillows
- **Single family home :**  
Cleaning on departure, Yard/swimming pool maintenance (1 X / per week), Parking

For your guidance

- **For your guidance**  
Kids welcome  
Pets accepted under certain conditions (ask the owner)  
Cell phone network coverage, personal transport advisable  
Water : hot/cold  
Local voltage supply : 220-240V / 50Hz  
Electricity supply : mains



yard

Advert No. 44559

[www.iha.com](http://www.iha.com)



Internet  
Holiday  
Ads



Internet  
Holiday  
Ads



Photo album - 1



private swimming pool



private swimming pool



sundeck



Farm setting



yard

Photo album - 2



view from the terrace



BBQ



terrace



covered terrace



dining room



kitchen



cozy nook



sitting room

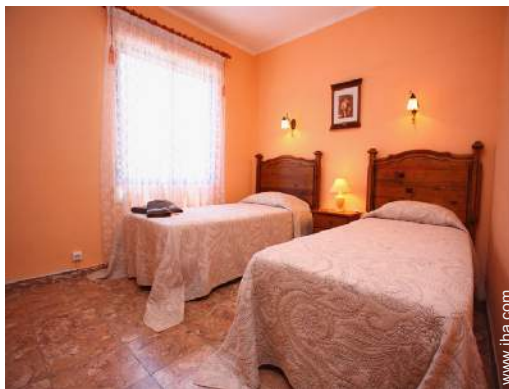
Photo album - 3



bedroom



bedroom



bedroom



view from the house



orchard



orchard



orchard



orchard

### Location & Access



GPS coordinates in degrees, minutes, seconds: Latitude 39° 8'46.176"N - Longitude 0°19'41.304"W ([City](#))

#### Address

→ San Sofí  
46613 Llaurí

#### • Freeway (exit) Salida 59 Favara-Cullera

→ Favara, Valencia Province, Valencian Country, Spain  
→ Distance : 2.5mi.  
→ Time : 5'

#### • Airport Valencia

→ Valencia, Valencia Province, Valencian Country, Spain  
→ Distance : 27,5mi.  
→ Time : 40'

- Cullera : Distance : 4.5mi.
- Gandia : Distance : 20mi.
- Valencia : Distance : 21mi.

### Contact

Last Name	Mr. MOLIÓ Salvador
Address	Lambert Antoni, 16
City	46612 CORBERA
Country	Spain
Cell phone #	+34 630906446 (Spain)
Spoken languages	



Charming vacation rental  
Ribera Baixa - Spain  
"Casa Rural Sansofi"

[Book now](#)

Availability calendar - from : may 2012

May	Tu	W	Th	F	Sa	Su	M	Tu	W	Th	F	Sa	Su	M	Tu	W	Th	F	Sa	Su	M	Tu	W	Th	F	Sa	Su	M	Tu	W	Th	
2012	1	2	3	4	5	6	7	8	9	10	11	12	13	14	15	16	17	18	19	20	21	22	23	24	25	26	27	28	29	30	31	

June	F	Sa	Su	M	Tu	W	Th	F	Sa	Su	M	Tu	W	Th	F	Sa	Su	M	Tu	W	Th	F	Sa							
2012	1	2	3	4	5	6	7	8	9	10	11	12	13	14	15	16	17	18	19	20	21	22	23	24	25	26	27	28	29	30
	-	-	-	-	-	-	-	-	-	-	-	-	-	-	-	-	-	-	-	-	-	-	-	-	-	-	-	-	-	-

Jul	Su	M	Tu	W	Th	F	Sa	Su	M	Tu	W	Th	F	Sa	Su	M	Tu	W	Th	F	Sa	Su	M	Tu							
2012	1	2	3	4	5	6	7	8	9	10	11	12	13	14	15	16	17	18	19	20	21	22	23	24	25	26	27	28	29	30	31
	-	-	-	-	-	-	-	-	-	-	-	-	-	-	-	-	-	-	-	-	-	-	-	-	-	-	-	-	-	-	

■ Low season     
 ■ Mid season     
 ■ High season

[Month : Next >>](#)

Rental rates - Charming Country House - 6 Person(s)

Rates	Night	Weekend	week	2 weeks	Month
<span style="color: green;">■</span> Low season	-	\$352 *	\$755 *	-	-
<span style="color: lightblue;">■</span> Mid season	-	\$378 *	\$818 *	\$1259 *	-
<span style="color: red;">■</span> High season	-	-	\$1070 *	\$1888 *	-

[Book now](#)





sundeck



Farm setting



yard



private swimming pool



private swimming pool



### Booking conditions

- **Reservation**

- Payment made at time of reservation
- Deposit required

- **Rental**

- Service charges included

### Accepted methods of payment

- Visa/Delta/Electron • Cash

[▶ Book now](#)

[▶ Contact the owner](#)

Contact directly the property owners

[www.iha.com](http://www.iha.com)  
Advert No.  
44559  
**>> Book now <<**

### Contact

Last Name Mr. MOLIÓ Salvador  
Address Lambert Antoni, 16  
City 46612 CORBERA  
Country Spain  
Cell phone # +34 630906446 (Spain)

Spoken languages



\* Converted at the rate indicated : €100 = \$125.87 = £80.11

Advert No. 44559

[www.iha.com](http://www.iha.com)



Internet  
Holiday  
Ads



Internet  
Holiday  
Ads

