

Charming vacation rental Montafon "Ferienwohnung Flatz"



Charming Apartment 2nd floor,
shared entrance, in(on) a(an) Charming
Typical House 1 floor

Setting : heavenly, enchanting

Capacity : **6 person(s)**

Bedroom(s) : **2**

Room(s) : **5**

St. Anton im Montafon - Vorarlberg

Austria

Reservation : +43 (0) 5552 69043 (Austria)

Advert No. 18102

www.iha.com



Internet
Holiday
Ads



Internet
Holiday
Ads



Charming vacation rental

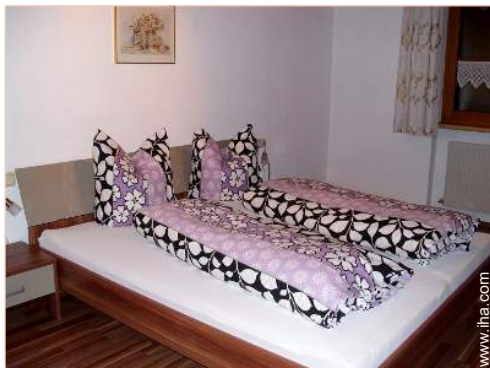


Charming Apartment 2nd floor, shared entrance, in(on) a(an) Charming Typical House 1 floor

- Ideal for all age groups, family
- View : panoramic, unobscured, mountain, country side, farmland, forest
- Setting : heavenly, enchanting
- Exposure : South

Goodies

- Parking :
Parking uncovered : 3 off road
- Advantages :
Ski locker, massage table, ping-pong table, 2 ping-pong bats
- baby equipment :
High chair, infant tub



large bedroom

Surroundings & location



Countryside



Ski



Fishing

Leisure

• Leisure activities less than 12 miles :

Alpine skiing, cross-country skiing, off-piste skiing, ski-trekking, Télémart skiing, snowboarding, luge (run), ice-skating, skidoo, bobsleigh, bathing, golf, tennis, riding school, pathway/broadwalk, coastal/forest paths, hiking, rappel, rock climbing, mountain bike (path), parachuting, horse-drawn carriage, horse trekking, mini-golf, rollerblade/rollerskate (circuit), skate board (ramps), go-karting, ten-pin bowling, fishing, fishing

• Supervised :

Ski school, kids ski area, tennis school, riding school

• Attractions and relaxation :

Bar/pub, discotheque, restaurant, movie theater, zoo/animal park, nature reserve, historical site, museum, theater, summer theater, local craftstore, natural spring baths, sauna, health spa, beauticians, fitness center, Bio farm

Surroundings

• Locality :

- Ski slopes 0.62mi.
- Ski lifts 0.62mi.
- Ice skating rink 3mi.
- Public swimming pool 0.93mi.
- Public tennis court 3mi.
- 9 hole golf course 4.5mi.
- Watersports centre
- Waterfall 0.5mi.
- River 0.5mi.
- Stretch of water 15.5mi.
- Forest <165'
- Mountain range 0.62mi.
- Marina >31mi.

• Amenities :

- Village center 990'
- Downtown 3mi.
- Ski bus pick up point 330'
- Ski hire store 0.62mi.
- Breadstore 330'
- Supermarket 0.62mi.
- Hairdressing salon 0.62mi.
- Mail office 0.62mi.
- Bank 0.62mi.
- ATM 0.62mi.
- Drugstore 3mi.
- Doctor 0.3mi.
- Hospital 3mi.



large bedroom



kitchen



interior

Interior

- **Receive up to guest(s) :**
6 person(s) - 6 adults
- **Liveable floor area :**
750 Sq.ft.
- **Interior layout :**
5 Room(s), 2 bedroom(s), 1 bathroom, 1 washroom, typical style kitchen
- **Sleeps - bed(s) :**
2 full bed(s), 2 twin bed(s), 1 baby cradle
- **Guest facilities :**
T.V., hi-fi system, DVD player, cable/satellite, internet access, wardrobe, Hanging wardrobe, safe deposit box, heated towel rail, central heating, skylights, Drapes, Double glazed
- **Appliances :**
Crockery/flatware, kitchen utensils, electric coffee maker, electric kettle, toaster, juicer, food processor, electric stove, electric hobs, oven, extractor hood, refrigerator, deep freeze, ice maker, dish washer, vacuum cleaner

Exterior

- **Size of grounds :**
0.37 acre
- **Outside accommodation :**
Balcony 150 Sq.ft.
- **Outside setting :**
Private courtyard, landscaped yard, lawn, woody
- **Outside amenities :**
Yard table(s), yard seat(s), parasol, sun recliner(s)



the decor

Services

- **washing :**
Sheets (1 X / per week), Towels (2 X / per week), Linen (2 X / per week), Comforter(s) (1 X / per week), Comforter(s) (1 X / per week), Pillows (1 X / per week)
- **Single family home :**
Cleaning on departure supplement (+\$59 *), Parking
- **Personnel :**
Massage supplement

For your guidance

- **For your guidance**
Kids welcome
Pets accepted under certain conditions (ask the owner)
Present on site : pets
Non smoking rental, personal transport advisable
Water : hot/cold
Local voltage supply : 220V / 60Hz
Electricity supply : mains



Charming Apartment

Floor plan

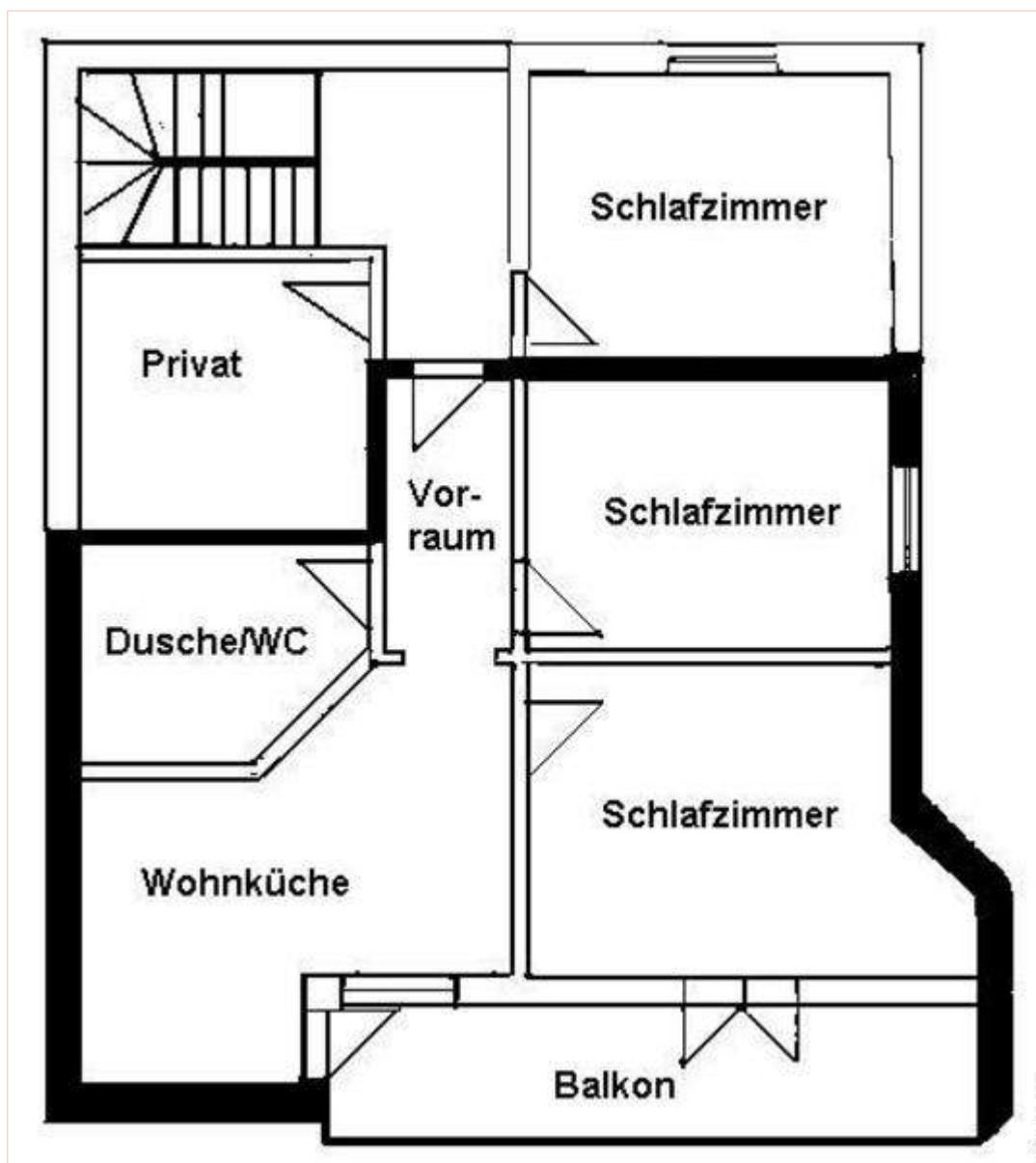


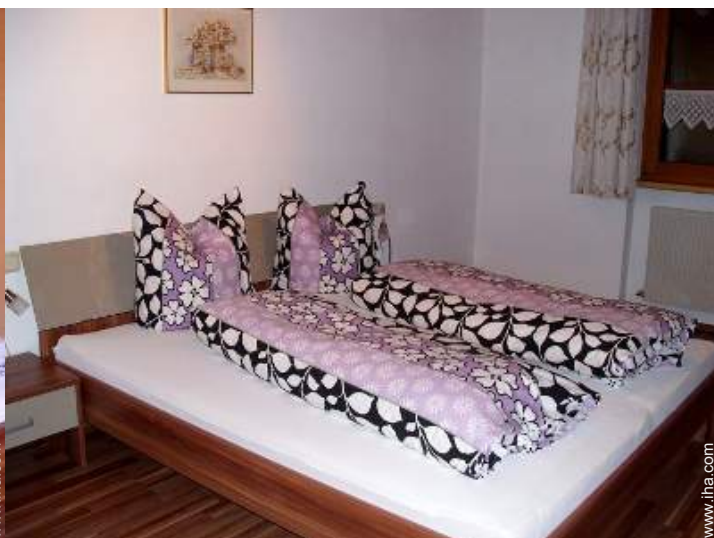
Photo album - 1



kitchen



large bedroom



large bedroom



interior



Charming Apartment

Photo album - 2



the decor



view from the balcony



mountain pursuits nearby



Winter



typical style kitchen



aerial view



aerial view



mountain pursuits nearby



hiking



bathing



Kitchen Area



bathroom

Photo album - 3



balcony



view from the balcony



view from the balcony



panorama



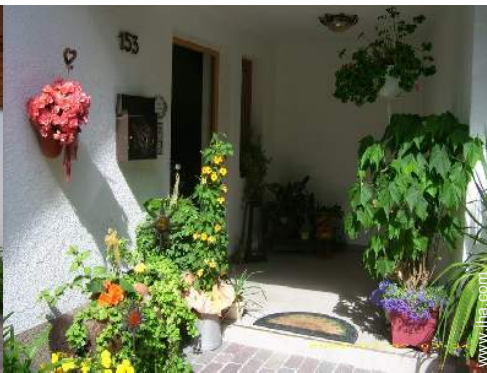
Summer



view from the balcony



Outside accommodation



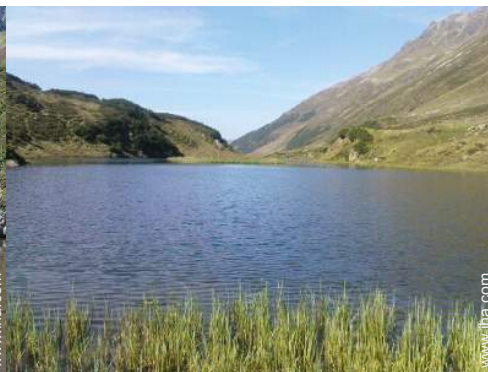
outside



massage



hiking

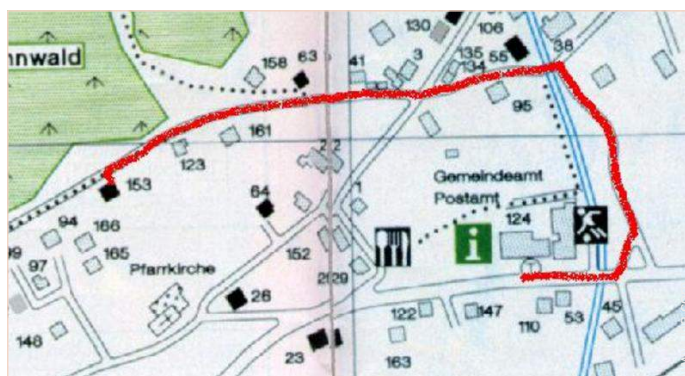


mountain pursuits nearby



general floor plan

Route map



Location & Access



GPS coordinates in degrees, minutes, seconds: Latitude 47° 6'45.792"N - Longitude 9°51'54.216"E (City)

Address

→ Hnr. 153
6771 St. Anton im Montafon

• Freeway (exit) Montafon

→ St. Anton im Montafon, Vorarlberg, Austria
→ Distance : 3mi.
→ Time : 10'

• Railroad station Sankt Anton im Montafon

→ St. Anton im Montafon, Vorarlberg, Austria
→ Distance : 0.3mi.
→ Time : 10'

- Bludenz : Distance : 3mi.
- Feldkirch : Distance : 15.5mi.
- Bregenz : Distance : 31mi.

Contact

Last Name Miss FLATZ Gertrud
FERIENWOHNUNG FLATZ
Address HNR. 153
City 6771 ST. ANTON IM MONTAFON
Country Austria
Phone # +43 (0) 5552 69043 (Austria)

Spoken languages  

Availability calendar - from : may 2012

May	Tu	W	Th	F	Sa	Su	M	Tu	W	Th	F	Sa	Su	M	Tu	W	Th	F	Sa	Su	M	Tu	W	Th							
2012	1	2	3	4	5	6	7	8	9	10	11	12	13	14	15	16	17	18	19	20	21	22	23	24	25	26	27	28	29	30	31
																									-	-	-	-	-	-	-

June	F	Sa	Su	M	Tu	W	Th	F	Sa	Su	M	Tu	W	Th	F	Sa	Su	M	Tu	W	Th	F	Sa							
2012	1	2	3	4	5	6	7	8	9	10	11	12	13	14	15	16	17	18	19	20	21	22	23	24	25	26	27	28	29	30
	-	-	-	-	-	-	-	-	-	-	-	-	-	-	-	-	-	-	-	-	-	-	-	-	-	-	-	-	-	-

Jul	Su	M	Tu	W	Th	F	Sa	Su	M	Tu	W	Th	F	Sa	Su	M	Tu	W	Th	F	Sa	Su	M	Tu							
2012	1	2	3	4	5	6	7	8	9	10	11	12	13	14	15	16	17	18	19	20	21	22	23	24	25	26	27	28	29	30	31
	-	-	-	-	-	-	-	-	-	-	-	-	-	-	-	-	-	-	-	-	-	-	-	-	-	-	-	-	-	-	

[Month : Next >>](#)

Booking conditions

• **Reservation**

- Payment balance : 1 month before the stay
- Deposit required : \$252 *

• **Rental**

- Service charges to be added
- Day tax in addition
- Cleaning charge levy on departure : \$59 *
- Anticipated supplement for : - animals

[▶ Book now](#)

[▶ Contact the owner](#)

Accepted methods of payment

- Bank transfer (wire)

Contact directly the property owners

www.iha.com
Advert No.
18102
[>> Book now <<](#)

Contact

Last Name Miss FLATZ Gertrud
FERIENWOHNUNG
FLATZ
Address HNR. 153
City 6771 ST. ANTON IM
MONTAFON
Country Austria
Phone # +43 (0) 5552 69043
(Austria)

Spoken languages 