

Gîte - Self Catering Arue House



Gîte - Self Catering - House,
detached, single storey, separate
entrance, in(on) a(an) Charming
Property

Setting : picturesque, quiet

Capacity : 2 person(s)

Bedroom(s) : 1

Room(s) : 2

Arue - Tahiti - Windward Islands - Society Islands
French Polynesia

Advert No. 71059

www.iha.com



Internet
Holiday
Ads



Internet
Holiday
Ads



Gîte - Self Catering



Gîte - Self Catering - House, detached, single storey, separate entrance, in(on) a(an) Charming Property

- **Ideal for couples, senior(s)**
- **View :** panoramic, unobscured, sea/ocean, country side, forest, nightlights
- **Setting :** picturesque, quiet
- **Exposure :** North-east

Goodies

- **Parking :**
Covered parking : 1 individual stall locked
Parking uncovered : 1 off road
- **Advantages :**
Courtesy car



courtesy car

Surroundings & location



Ocean

Leisure

- **Leisure activities less than 12 miles :**

Bathing, snorkelling, scuba diving, Scuba diving (Standard diving dress), jet ski, windsurfing, sailing, tennis, riding school, boat trips, horse trekking, fishing, deep-sea fishing, fishing, spear fishing

- **Supervised :**

Sailing school, dive school, tennis school, riding school

- **Attractions and relaxation :**

Bar/pub, discotheque, restaurant, movie theater, park and garden, exhibition center, art gallery, historical site, museum, theater, summer theater, festivals, antiques & bric-a-brac, local craftstore, race track, thalassotherapy center, sauna, beauticians, fitness center

Surroundings

- **Locality :**

- Sea/ocean 0.62mi.
- Sandy beach 4.5mi.
- Sea inlet 1.85mi.
- Public tennis court 330'
- 18 hole golf course 15.5mi.
- Flying clubs 6mi.
- Windsurfing spots 4.5mi.
- Surfing spots 4.5mi.
- Watersports centre 0.5mi.
- Forest 0.93mi.
- Marina 0.5mi.
- Slipway 0.5mi.
- Jetski slipway 0.5mi.

- **Amenities :**

- Downtown 1.85mi.
- Bus stop / bus station 0.5mi.
- Bike/mountain bike hire 1.5mi.
- Scooter/motorbike hire 1.5mi.
- Car rental 1.5mi.
- Scuba diving material hire 0.5mi.
- Breadstore 0.3mi.
- Caterer 0.93mi.
- Local stores 0.93mi.
- Supermarket 0.3mi.
- High class retailers 0.93mi.
- Hairdressing salon 0.3mi.
- Internet cafe 0.93mi.
- Mail office 0.93mi.
- Bank 0.93mi.
- ATM 0.3mi.
- Drugstore 0.3mi.
- Doctor 0.3mi.
- Nurse 0.3mi.
- Hospital 0.5mi.
- Dispensary 0.3mi.



covered terrace



view from the covered terrace



internet access

Interior

- **Receive up to guest(s) :**

2 person(s) - 2 adults

- **Liveable floor area :**

1,076 Sq.ft.

- **Interior layout :**

2 Room(s), 1 bedroom(s), sleeping den, 1 bathroom, 1 shower room, 1 washroom, living room 300 Sq.ft., sitting room 172 Sq. ft., separate kitchen, dining area, office, veranda

- **Sleeps - bed(s) :**

1 king-size bed(s), 1 twin storage bed 1 pers

- **Guest facilities :**

T.V., hi-fi system, vcr, DVD player, board games, book collection, movie collection, t.v points, phone, cable/satelite, internet access, high speed internet access, wifi (wireless internet access), wardrobe, Hanging wardrobe, hair dryer, fly screens, partly air-conditioned, mobile cool air fan, ceiling paddle fan, remote controlled gates

- **Appliances :**

Crockery/flatware, kitchen utensils, cafetiere, electric coffee maker, electric espresso coffee maker, electric kettle, toaster, juicer, food processor, pancake maker, electric raclette set, fondue set, meat broiler, gaz stove, oven, micro-wave oven, refridgerator, deep freeze, washing machine, vacuum cleaner, iron, ironing board

Exterior

- **Size of grounds :**

8,600 Sq.ft.

- **Outside accommodation :**

Covered terrace 323 Sq.ft.

- **Outside setting :**

Enclosed grounds 8,600 Sq.ft., tropical garden 3,300 Sq.ft., lawn 650 Sq.ft., orchard 1,076 Sq.ft.

- **Outside amenities :**

BBQ, yard table(s), yard seat(s), parasol, 2 sun recliner(s)



south-easterly view

Services

- **washing :**

Sheets, Towels, Linen, Beach towels, Comforter(s), Pillows

- **Single family home :**

Yard/swimming pool maintenance, Parking

For your guidance

- **For your guidance**

No kids under 13 years old

Non smoking rental

Local voltage supply : 220-240V / 50Hz

Electricity supply : mains

- **Handicapped people welcome**

Wheelchair access



Interior layout and facilities

Photo album - 1



view from the covered terrace



covered terrace



courtesy car



internet access



Interior layout and facilities

Advert No. 71059

www.iha.com



Internet
Holiday
Ads



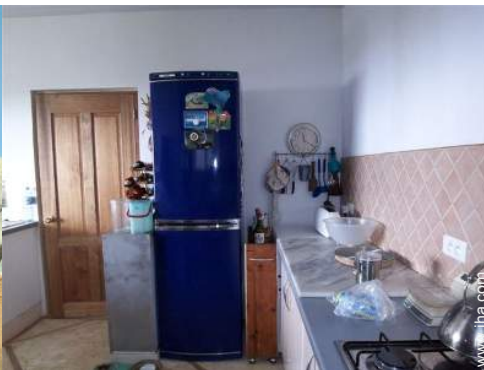
Internet
Holiday
Ads



Photo album - 2



south-easterly view



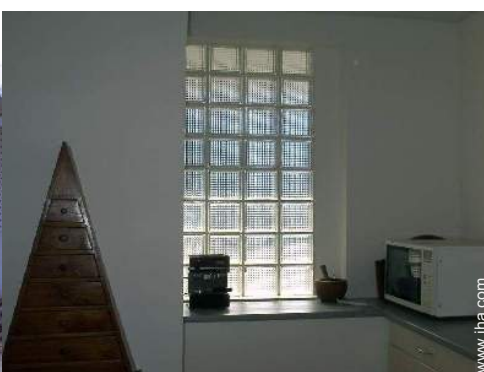
Kitchen Area



king-size bed(s)



view from the veranda



Kitchen Area



view from the sitting-room



view from the house



bathroom



sitting room



Kitchen Area

Gîte - Self Catering
Windward Islands - Society Islands - French Polynesia
House

6

[Book now](#)

Location & Access



GPS coordinates in degrees, minutes, seconds: Latitude 17° 32'20"S - Longitude 149°31'23"W ([Dwelling](#))

Address

→ Domaine Labbé
BP 140086
98701 Arue

• [Airport Tahiti Faa'a](#)

→ Papeete, Tahiti, Windward Islands - Society Islands, French Polynesia

→ Distance : 4.5mi.

→ Time : 30'

• [Sea port Papeete](#)

→ Papeete, Tahiti, Windward Islands - Society Islands, French Polynesia

→ Distance : 1.85mi.




→ Time : 15'

• Papeete : Distance : 1.85mi.

• Temae : Distance : 13mi.

• Tetiaroa : Distance : 31mi.

Contact

Last Name	Mr. Mrs. TROTTMANN Pit Claudius & Alisé
Address	Domaine Labbé BP 140086
City	98701 ARUE-TAHITI
Country	French Polynesia
Phone #	+689 423599 (French Polynesia) From 06:00 AM to 10:00 AM (HAW/GMT -10:00)
Cell phone #	+689 214607 (French Polynesia)
Fax #	+689 423599 (French Polynesia)
Spoken languages	  

Advert No. 71059

www.iha.com



>> VACATION RENTALS

Internet
Holiday
Ads



Internet
Holiday
Ads



DIRECT BY OWNERS

Gîte - Self Catering
Arue - French Polynesia
House

7

[Book now](#)

Availability calendar - from : may 2012

May	Tu	W	Th	F	Sa	Su	M	Tu	W	Th	F	Sa	Su	M	Tu	W	Th	F	Sa	Su	M	Tu	W	Th	F	Sa	Su	M	Tu	W	Th	
2012	1	2	3	4	5	6	7	8	9	10	11	12	13	14	15	16	17	18	19	20	21	22	23	24	25	26	27	28	29	30	31	

June	F	Sa	Su	M	Tu	W	Th	F	Sa	Su	M	Tu	W	Th	F	Sa	Su	M	Tu	W	Th	F	Sa								
2012	1	2	3	4	5	6	7	8	9	10	11	12	13	14	15	16	17	18	19	20	21	22	23	24	25	26	27	28	29	30	

Jul	Su	M	Tu	W	Th	F	Sa	Su	M	Tu	W	Th	F	Sa	Su	M	Tu	W	Th	F	Sa	Su	M	Tu							
2012	1	2	3	4	5	6	7	8	9	10	11	12	13	14	15	16	17	18	19	20	21	22	23	24	25	26	27	28	29	30	31

Reserved

[Month : Next >>](#)

Rental rates - Gîte - Self Catering - House - 2 Person(s)

Rates	Night	Weekend	week	2 weeks	Month
<input type="checkbox"/> Low season	-	-	-	\$1208 *	\$2392 *
<input type="checkbox"/> Mid season	-	-	-	\$1385 *	\$2517 *
<input type="checkbox"/> High season	-	-	-	\$1485 *	\$2643 *

[Book now](#)





courtesy car



internet access



Interior layout and facilities



view from the covered terrace



covered terrace

Booking conditions

• Reservation

- Payment made at time of reservation : 50% of rental sum
- Payment balance : 45 days before the stay
- Deposit required : \$2014 *

• Rental

- Service charges to be added
- Cleaning charge levy on departure : \$88 *

[▶ Book now](#)

[▶ Contact the owner](#)

Accepted methods of payment

- International Money Order • Bank transfer (wire)

Contact directly the property owners

www.ihacom.com
Advert No.
71059
[>> Book now <<](#)

Contact

Last Name	Mr. Mrs. TROTTMANN Pit Claudius & Alisé
Address	Domaine Labbé BP 140086
City	98701 ARUE-TAHITI
Country	French Polynesia
Phone #	+689 423599 (French Polynesia) From 06:00 AM to 10:00 AM (HAW/GMT -10:00)
Cell phone #	+689 214607 (French Polynesia)
Fax #	+689 423599 (French Polynesia)
Spoken languages	

* Converted at the rate indicated : €100 = \$125.87 = £80.11

Advert No. 71059

www.ihacom.com



Internet
Holiday
Ads



Internet
Holiday
Ads

